



# SERVICE BULLETIN

|                              |                          |                           |
|------------------------------|--------------------------|---------------------------|
| Classification:<br>DA19-011b | Reference:<br>NTB19-042b | Date:<br>February 3, 2021 |
|------------------------------|--------------------------|---------------------------|



## AEB WARNING LIGHT BLINKING

This bulletin has been amended. See **AMENDMENT HISTORY** on the last page.  
Please discard previous versions of this bulletin.

- APPLIED VEHICLES:**
- |                          |                               |
|--------------------------|-------------------------------|
| 2019-2021 Altima (L34)   | 2015-2020 Rogue (T32)         |
| 2017-2021 Armada (Y62)   | 2021 Rogue (T33)              |
| 2020-2021 Kicks (P15)    | 2016-2018 Rogue Hybrid (T32H) |
| 2018-2021 LEAF (ZE1)     | 2017-2021 Rogue Sport (J11)   |
| 2016-2021 Maxima (A36)   | 2020-2021 Sentra (B18)        |
| 2015-2021 Murano (Z52)   | 2020-2021 Titan (A61)         |
| 2016 Murano Hybrid (Z52) | 2020-2021 Versa (N18)         |

**APPLIED SYSTEMS:** Vehicles equipped with a lane camera (see Figure 1)

### SERVICE INFORMATION

If the AEB warning light  or  is blinking (but not illuminated steadily) or the customer states it is blinking, and there are no related DTCs, inspect the windshield.

A blinking AEB warning light may occur under the following conditions:

- When contamination or foreign material adhere to the lane camera viewing window on the windshield
- When driving while it is snowing or when frost forms on the lane camera viewing window on the windshield
- When the lane camera viewing window on the windshield is temporarily fogged up

**NOTE:**

- If DTCs are present in any of the following related systems:

- Laser/Radar,
- ICC/ADAS, or
- Lane Camera,

Refer to the related Electronic Service Manual (ESM) for diagnosis.

- Refer to the following pages for further information.

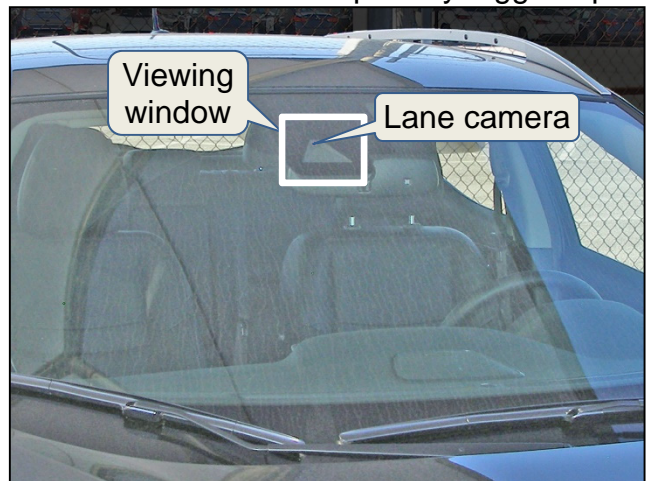
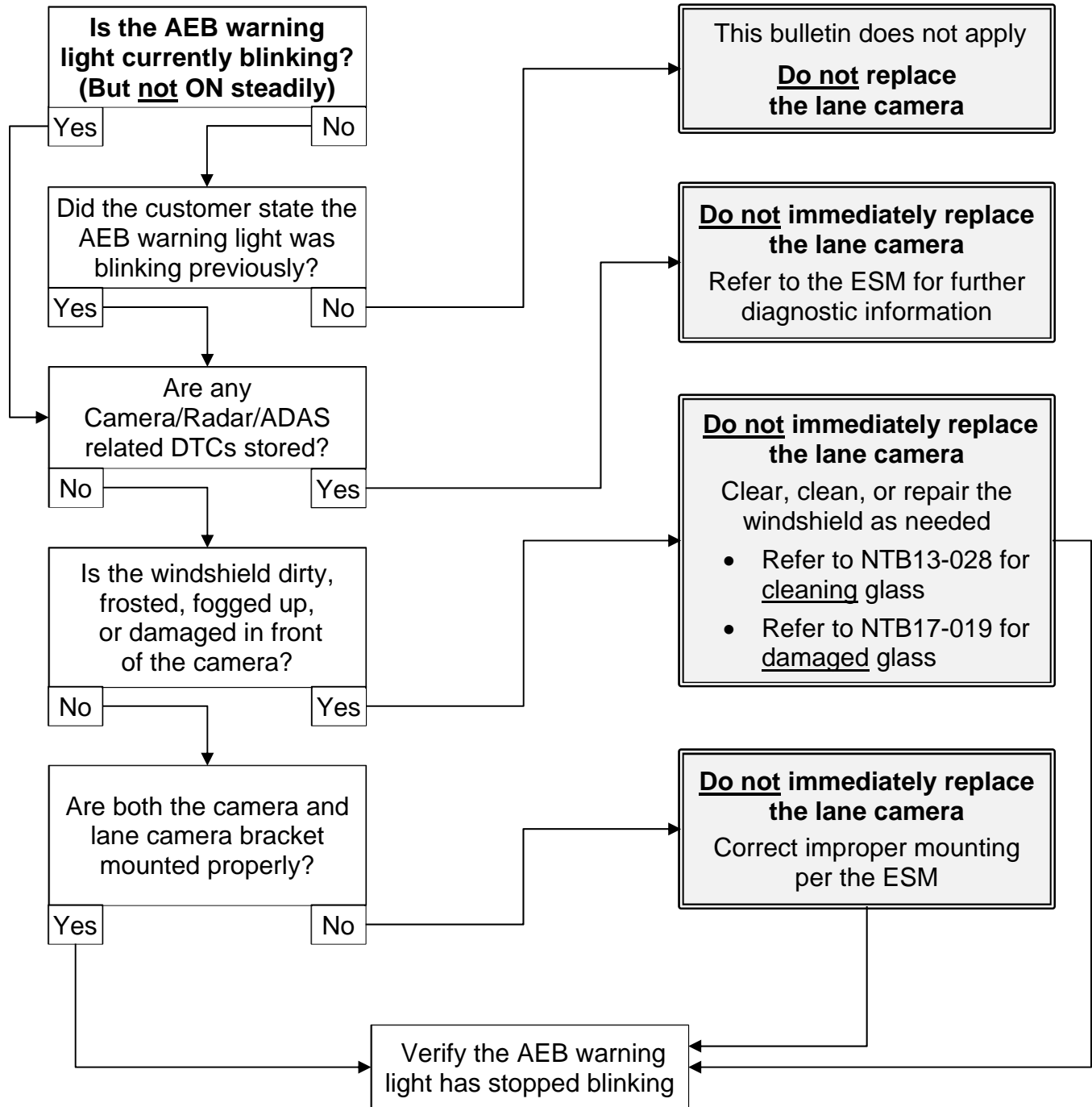


Figure 1

Nissan Bulletins are intended for use by qualified technicians, not 'do-it-yourselfers'. Qualified technicians are properly trained individuals who have the equipment, tools, safety instruction, and know-how to do a job properly and safely. **NOTE:** If you believe that a described condition may apply to a particular vehicle, DO NOT assume that it does. See your Nissan dealer to determine if this applies to your vehicle.

**FLOW CHART**



Inform the customer the following conditions may cause the AEB warning light to blink:

- When contamination or foreign material adhere to the lane camera viewing window on the windshield
- When driving while it is snowing or when frost forms on the lane camera viewing window on the windshield
- When the lane camera viewing window on the windshield is temporarily fogged up

Explain to the customer the difference between contamination detection and a malfunction.

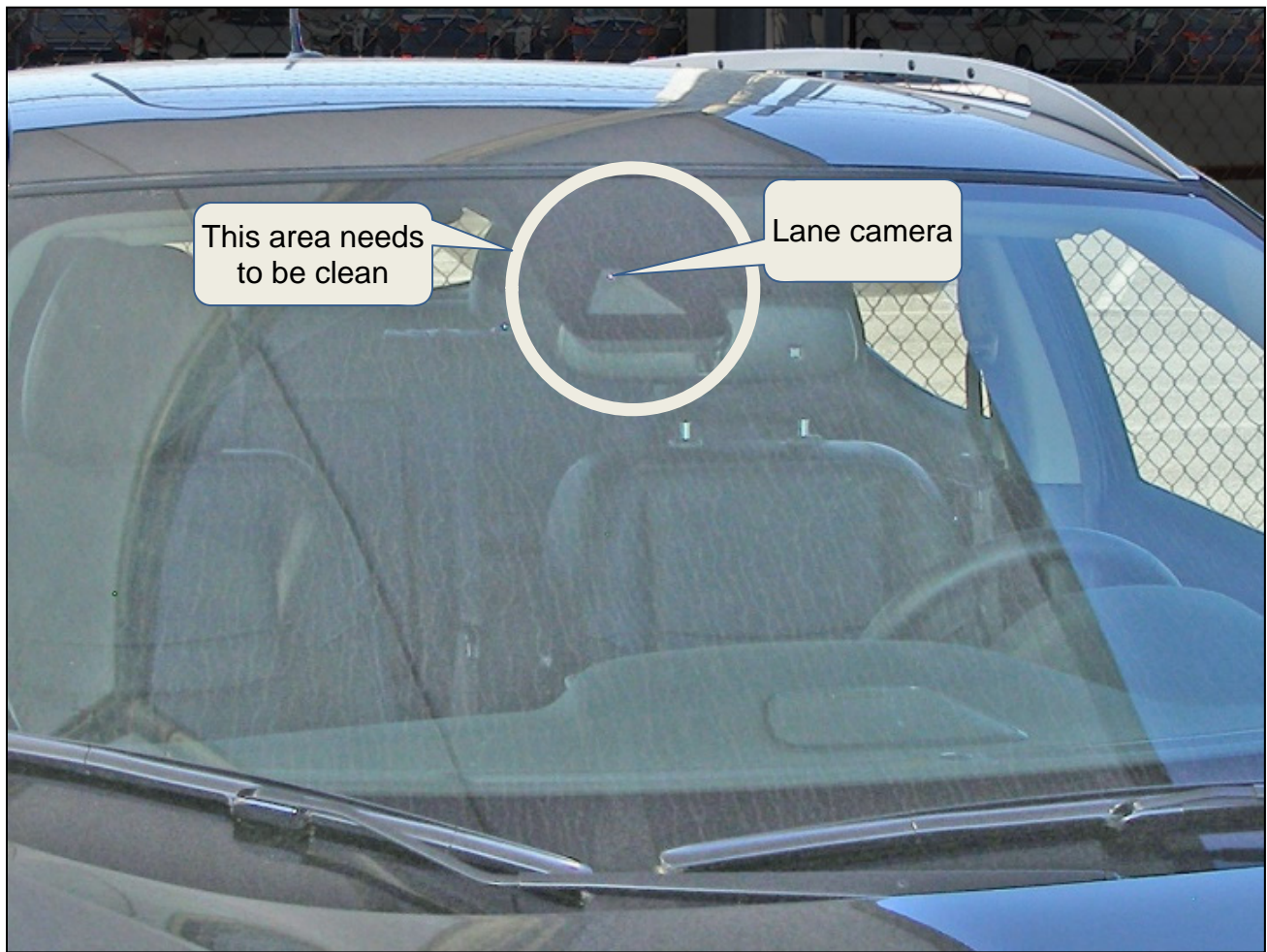


Figure 2

**AMENDMENT HISTORY**

| <b>PUBLISHED DATE</b> | <b>REFERENCE</b> | <b>DESCRIPTION</b>              |
|-----------------------|------------------|---------------------------------|
| May 22, 2019          | NTB19-042        | Original bulletin published     |
| November 5, 2020      | NTB19-042a       | <b>APPLIED VEHICLES</b> updated |
| February 3, 2021      | NTB19-042b       | Classification number updated   |