



SERVICE BULLETIN

Classification: DA20-019a	Reference: NTB20-061a	Date: February 2, 2021
------------------------------	--------------------------	---------------------------

TRAFFIC SIGN RECOGNITION OR LANE DEPARTURE WARNING MALFUNCTION DISPLAYED AND MIL ON WITH DTC C2503-54 AND/OR C1F6B-54 STORED

This bulletin has been amended. See AMENDMENT HISTORY on the last page.
Please discard previous versions of this bulletin.

APPLIED VEHICLES: 2020 Sentra (B18)
APPLIED DATE: Built before May 29, 2020

IF YOU CONFIRM

The customer states that one of the following warnings is displayed on the vehicle information display along with the AEB Warning Light:

- Traffic Sign Recognition Malfunction Displayed
- Lane Departure Warning Malfunction Displayed

And

- The MIL is ON with DTC C2503-54 (CAMERA AIMING INCMP) and/or C1F6B-54 (CAMERA UNIT MALF) stored.

NOTE: If DTC C2500-49 and/or C1F6B-49 is stored, this TSB does not apply.



Figure 1

ACTION

- If the vehicle was built on or before 1/31/2020, remove material from the lane camera and then reprogram the lane camera control unit.
- If the vehicle was built after 1/31/2020 but before 5/29/2020, skip to step 6 and reprogram only the lane camera control unit.

IMPORTANT: The purpose of ACTION (above) is to give you a quick idea of the work you will be performing. You **MUST** closely follow the entire SERVICE PROCEDURE as it contains information that is essential to successfully completing this repair.

Nissan Bulletins are intended for use by qualified technicians, not 'do-it-yourselfers'. Qualified technicians are properly trained individuals who have the equipment, tools, safety instruction, and know-how to do a job properly and safely. **NOTE:** If you believe that a described condition may apply to a particular vehicle, DO NOT assume that it does. See your Nissan dealer to determine if this applies to your vehicle.

SERVICE PROCEDURE

If the vehicle was built after 1/31/2020 but before 5/29/2020, skip to step 6 and only perform **Lane Camera Reprogramming**.

Remove Material from Lane Camera (front camera unit)

1. Remove the front camera unit above the rearview mirror.
 - For the procedure to remove the front camera unit, refer to the Electronic Service Manual (ESM): Section **CRUISE CONTROL & DRIVER ASSISTANCE > DRIVER ASSISTANCE SYSTEM > DRIVER ASSISTANCE SYSTEM > REMOVAL AND INSTALLATION > FRONT CAMERA UNIT**.

2. Measure the feet of the front camera unit with an appropriate tool and write the measurements on the repair order.
 - This will provide a starting measurement to compare to as material is removed.

NOTE: If the bottom of the feet have already had material removed, skip to step 6 to reprogram the lane camera.

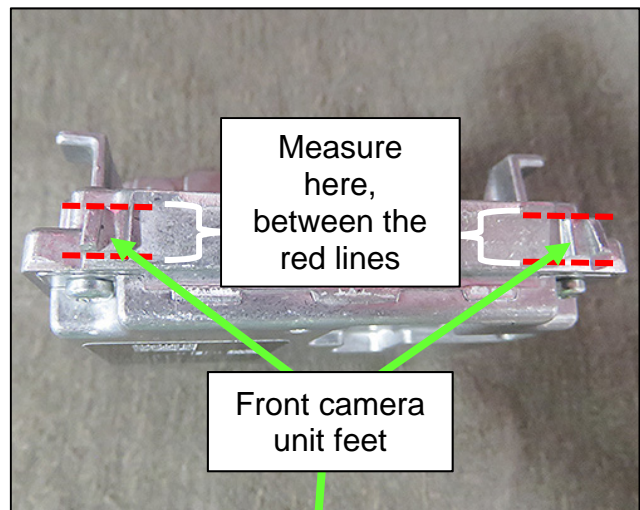


Figure 2

3. Remove 0.3 mm (0.012 inches) of material off of the bottom of both feet.
 - Carefully remove material with a suitable tool such as a file.
 - A dial caliper, or equivalent measuring instrument, can be used.

NOTE: Only one foot is shown in Figure 3.

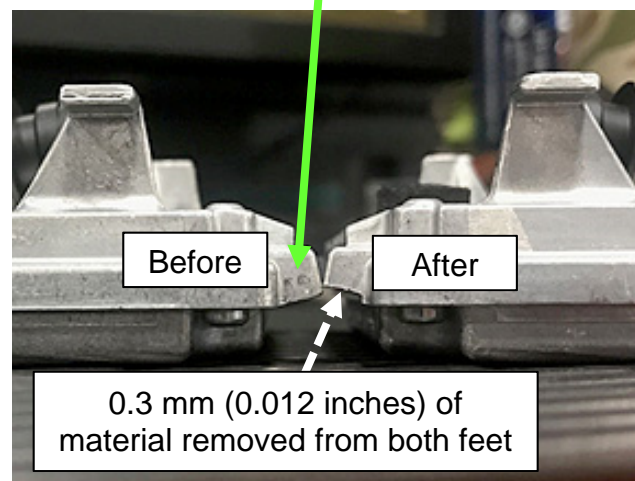


Figure 3

4. Reinstall the front camera unit.
 - Refer to the ESM: Section **CRUISE CONTROL & DRIVER ASSISTANCE > DRIVER ASSISTANCE SYSTEM > DRIVER ASSISTANCE SYSTEM > REMOVAL AND INSTALLATION > FRONT CAMERA UNIT**.

5. After reinstalling the front camera unit, perform “**ADDITIONAL SERVICE WHEN REPLACING FRONT CAMERA UNIT**”.
 - Refer to the ESM: Section **CRUISE CONTROL & DRIVER ASSISTANCE > DRIVER ASSISTANCE SYSTEM > DRIVER ASSISTANCE SYSTEM > BASIC INSPECTION > ADDITIONAL SERVICE WHEN REPLACING FRONT CAMERA UNIT**.

Lane Camera Control Unit Reprogramming

6. Using C-III plus, confirm the current lane camera control unit (CU) part number and write it on the repair order.
 - If it matches one of the part numbers in **Table A** below, proceed to step 7 to reprogram the lane camera.
 - If it does not match one of the part numbers in **Table A**, lane camera reprogramming is not needed. If needed, refer to the ESM for additional diagnostic information.

Table A

MODEL	CURRENT CU PART NUMBER: 284G3-XXXXX
2020 Sentra	6LA0A, 6LA1A

NOTICE Perform the following before starting the reprogramming procedure to prevent damage to the control unit:

- Connect the AC Adapter to the CONSULT PC.
 - Connect the CONSULT PC to the internet via Wi-Fi or a network cable.
 - Ensure ASIST on the CONSULT PC has been synchronized (updated) to the current date and all C-III plus software updates (if any) have been installed.
 - Turn OFF all external Bluetooth® devices (e.g., cell phones, printers, etc.) within range of the CONSULT PC and the VI. If Bluetooth® signal waves are within range of the CONSULT PC and plus VI during reprogramming, the reprogramming may be interrupted.
 - Turn OFF all vehicle electrical loads.
 - Connect a battery maintainer or smart charger, set to reflash mode or a similar setting, to ensure the battery voltage stays between 12.0 V and 15.5 V.
7. Turn the ignition ON, if not already.

8. From the ASIST home screen, select **Re/programming, Configuration**.

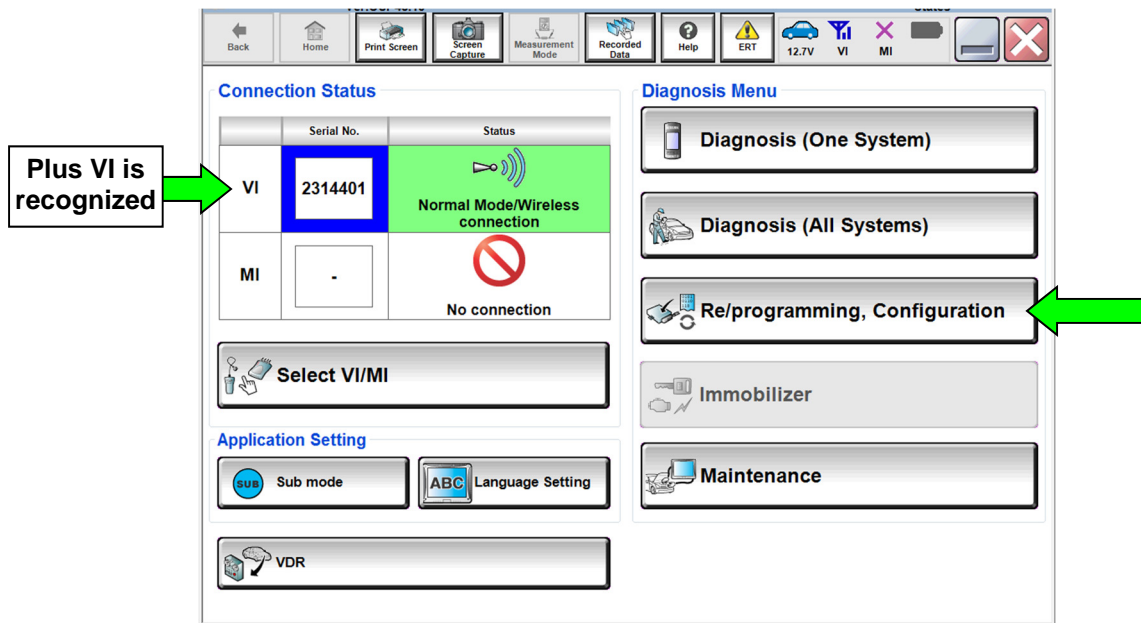


Figure 4

9. Read the **Caution**, and then click on the “**Confirmed instructions**” check box.

10. Select **Next**.

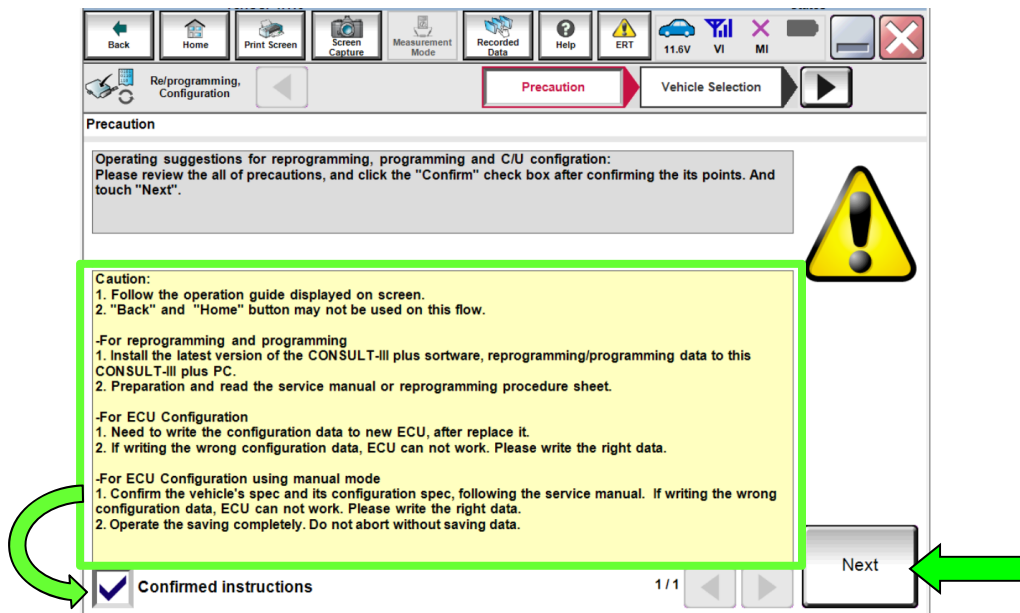


Figure 5

11. Verify that the VIN is correct, and then select **Confirm**.

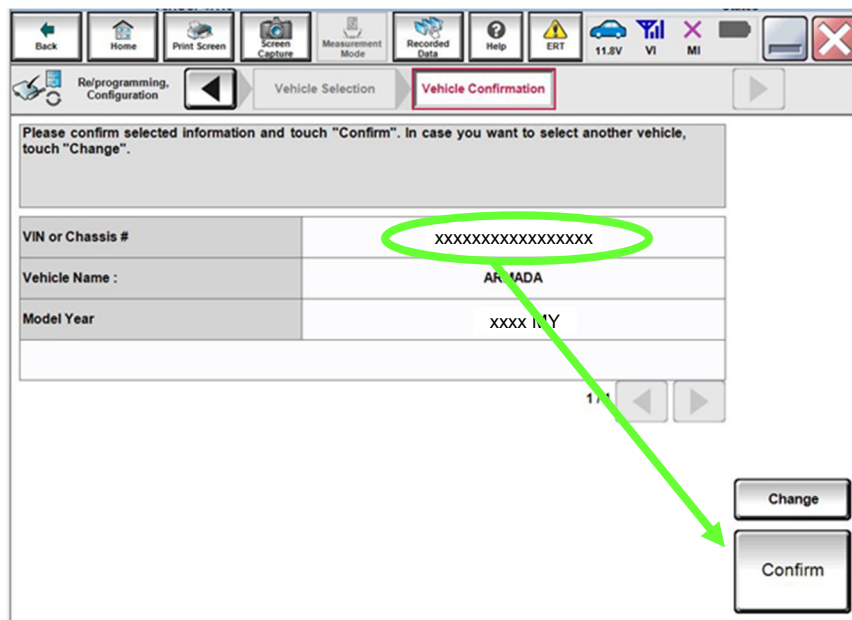


Figure 6

12. Select **Confirm**.

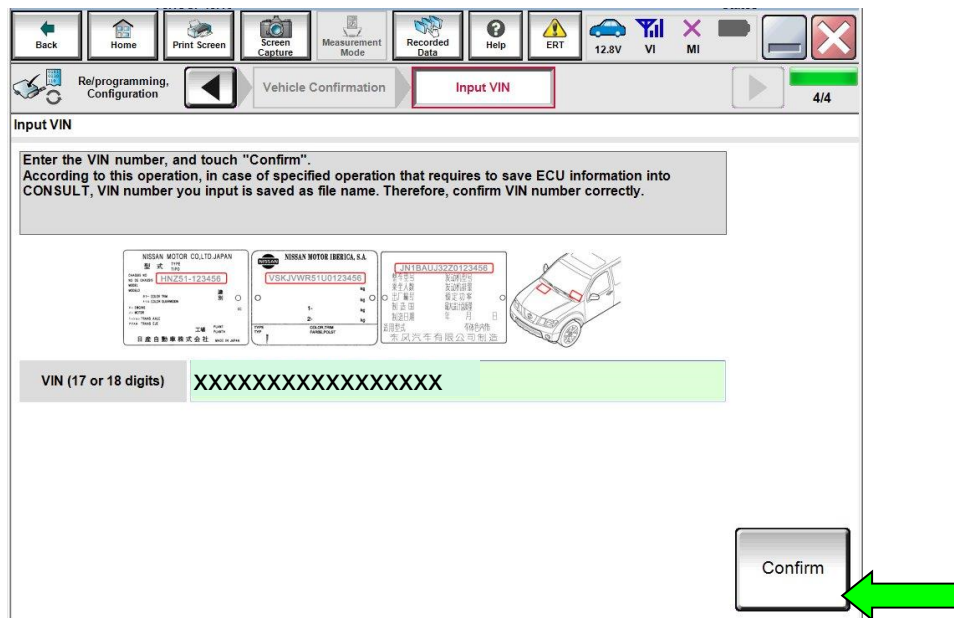


Figure 7

13. Select **LANE CAMERA**.

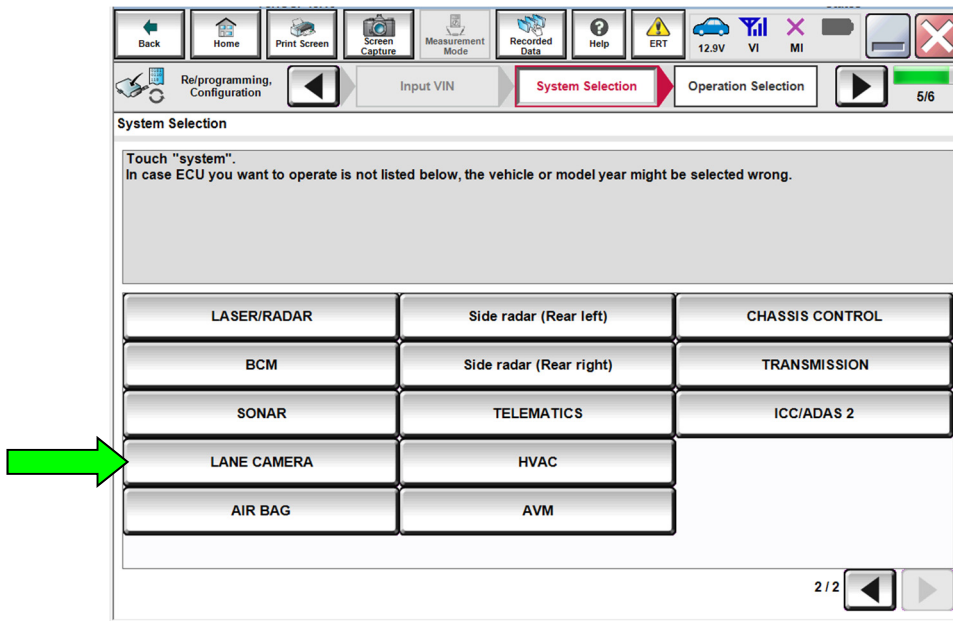


Figure 8

14. Select **Reprogramming**.

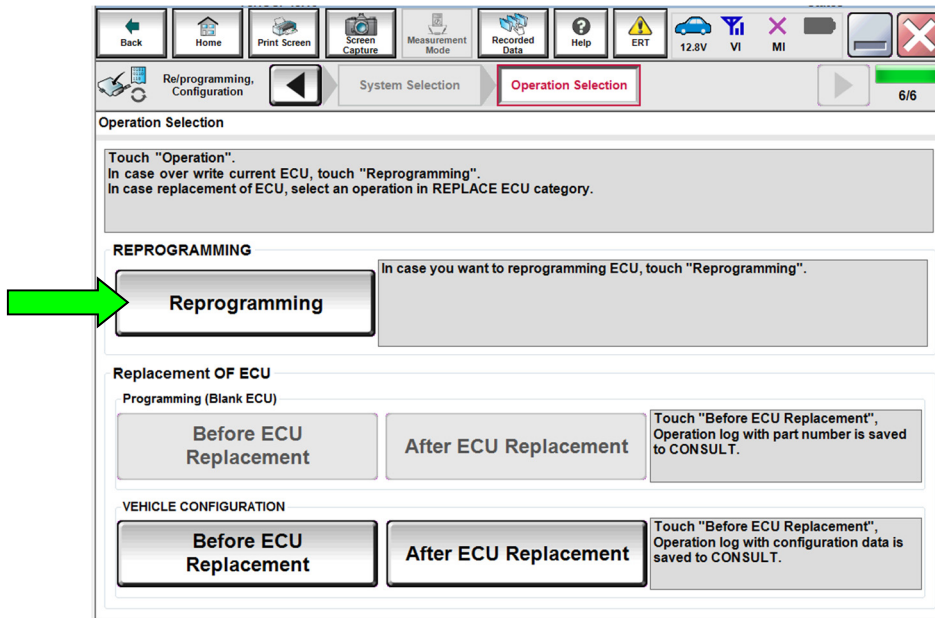


Figure 9

15. Select **Save**.

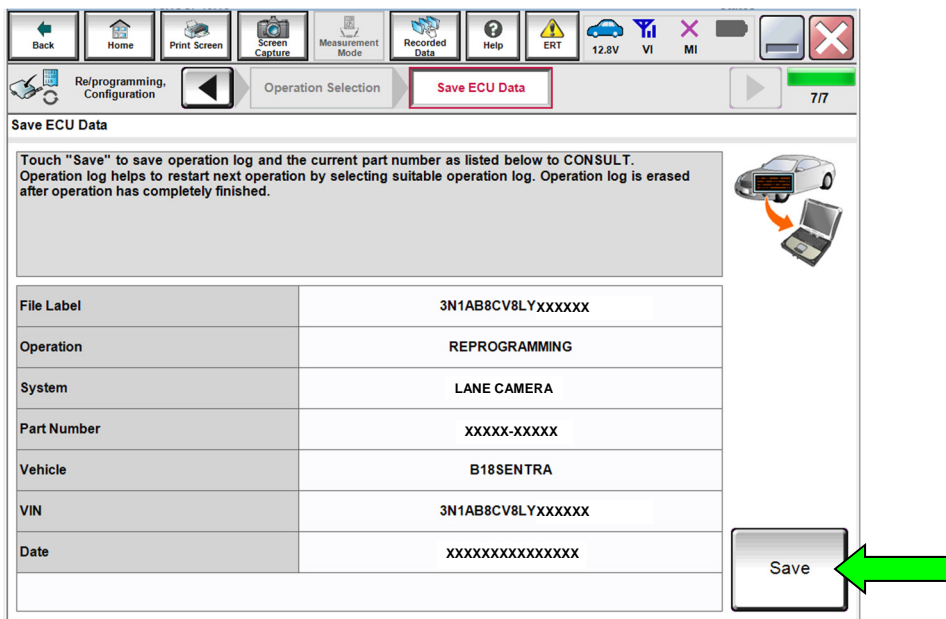


Figure 10

16. Read the **Precautions**, and then click on the **Confirmed Instructions** box.

17. Select **Next**.

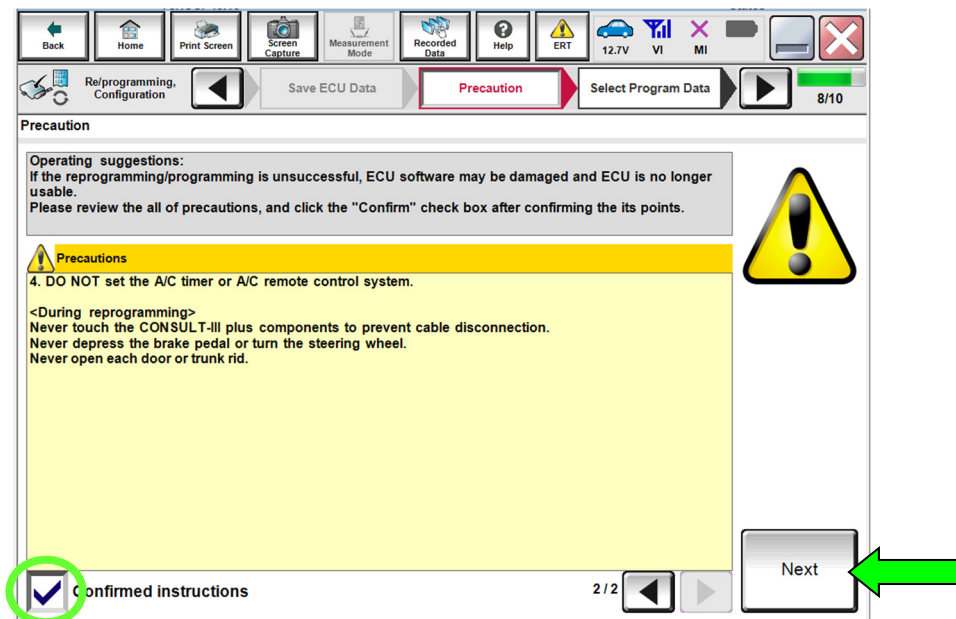


Figure 11

18. Confirm that the battery voltage is OK, and then select **Next**.

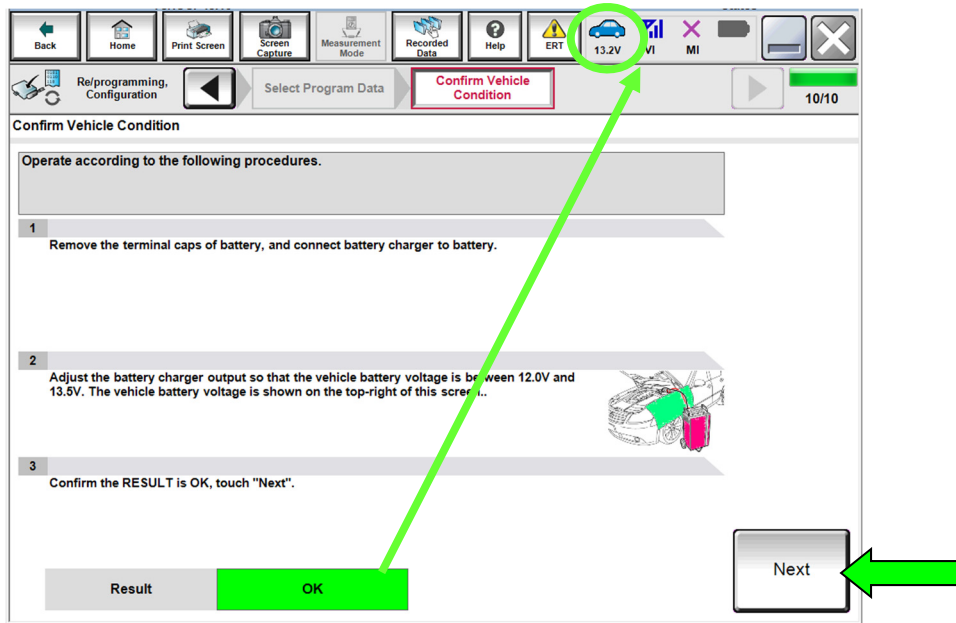


Figure 12

19. Select **Start**.

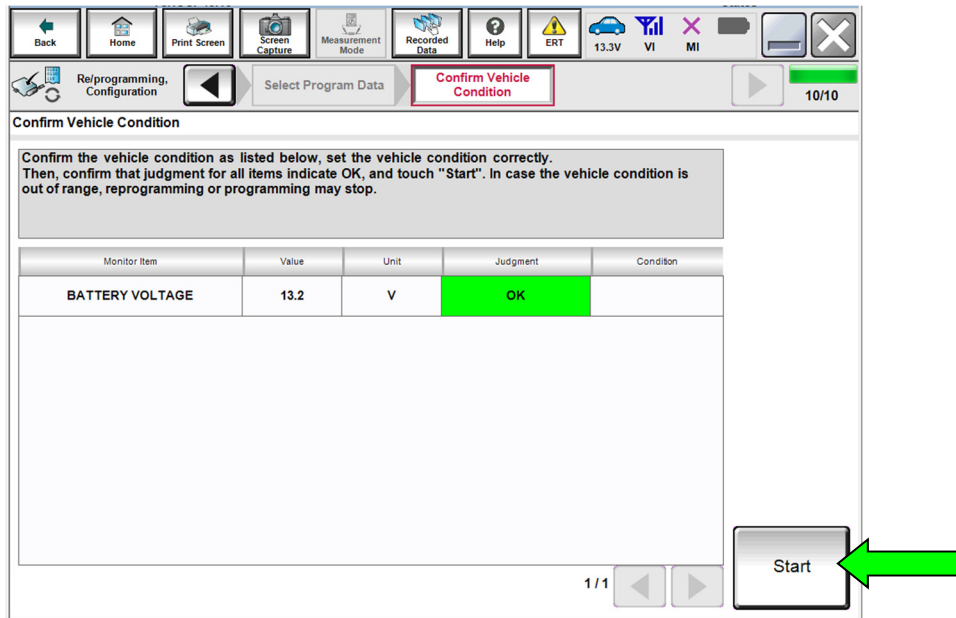


Figure 13

20. Select **USA/CANADA Dealers**.

21. Select **OK**.

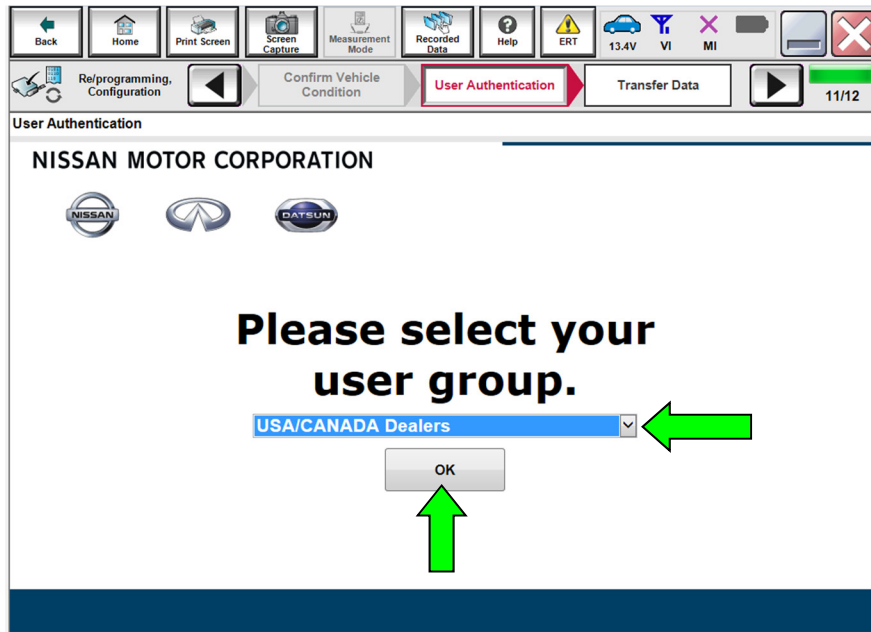


Figure 14

NOTE:

- The above screen may not display if the CONSULT PC has remained ON since the last reprogramming.
- In the next steps, the reprogramming process will begin when **Submit** is selected.

22. Enter your **Username** and **Password**.

- The CONSULT PC must be connected to the internet via cable or Wi-Fi.
- If you do not know your Username and Password, contact your service manager.

23. Select **Submit**.

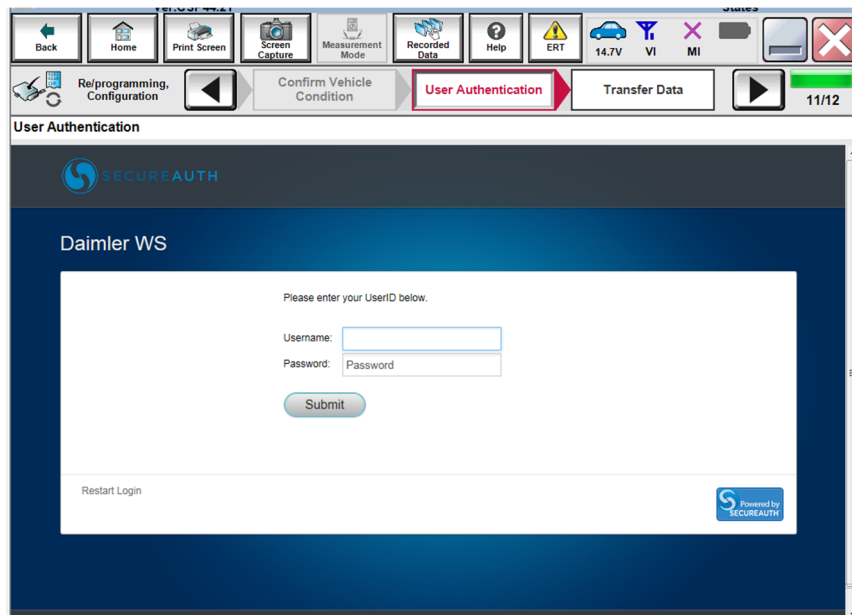


Figure 15

24. When the screen below is displayed, select **Next**.

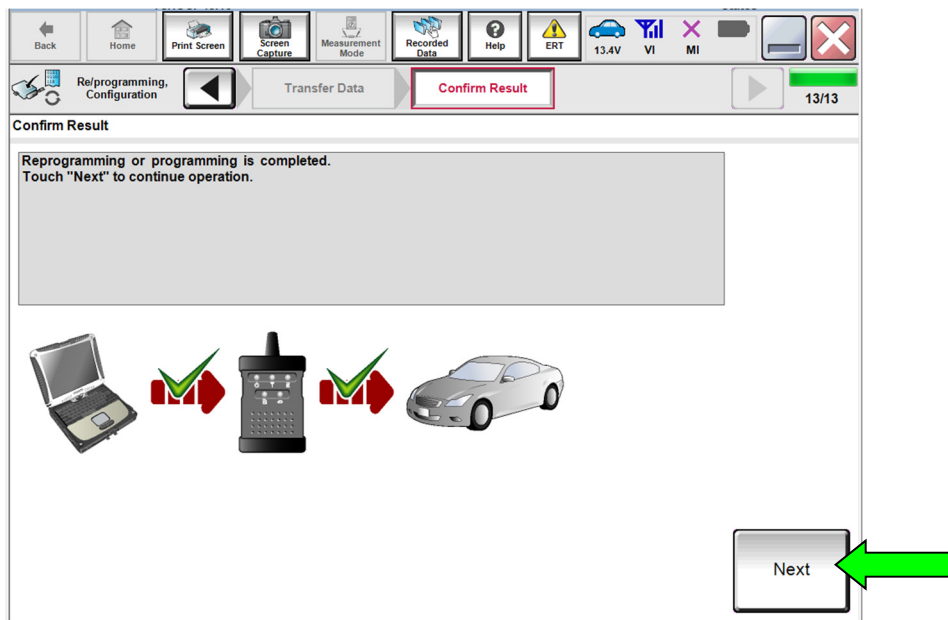


Figure 16

25. Turn the ignition OFF.

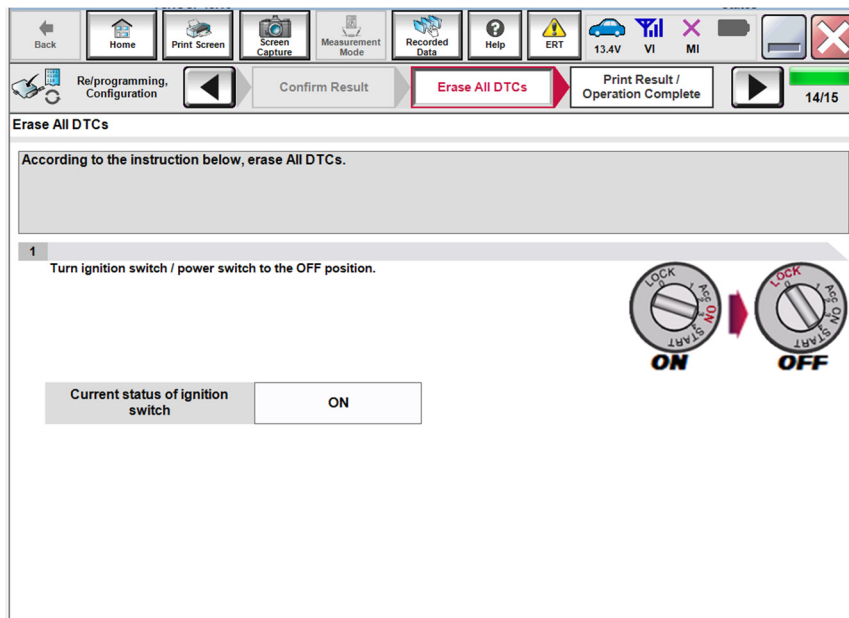


Figure 17

26. Turn the ignition ON and select **Next**.

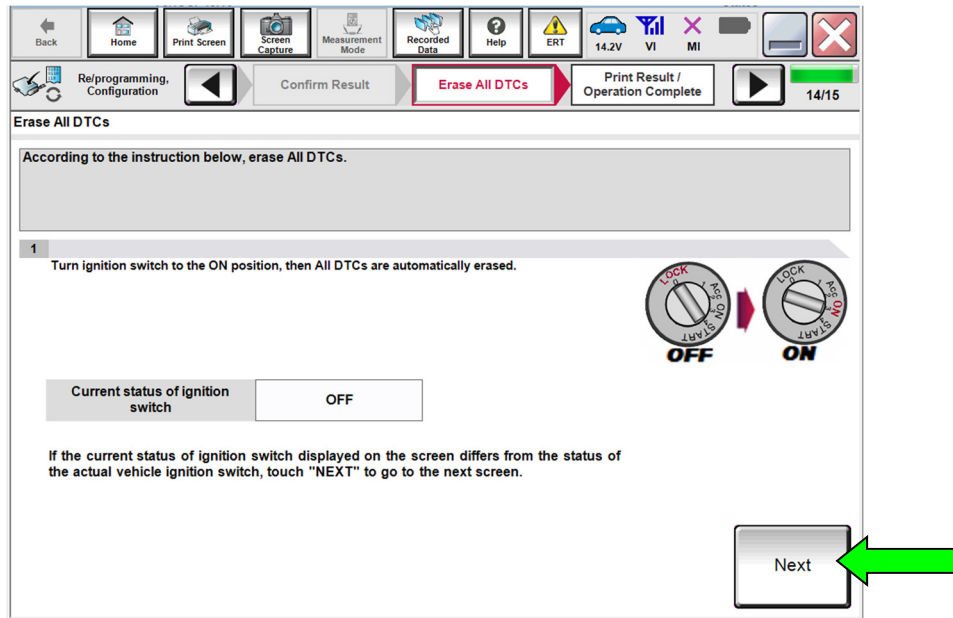


Figure 18

27. After completing **Erase ALL DTCs**, print a copy of the C-III plus screen showing the before and after part numbers of the control unit and attach it to the repair order.

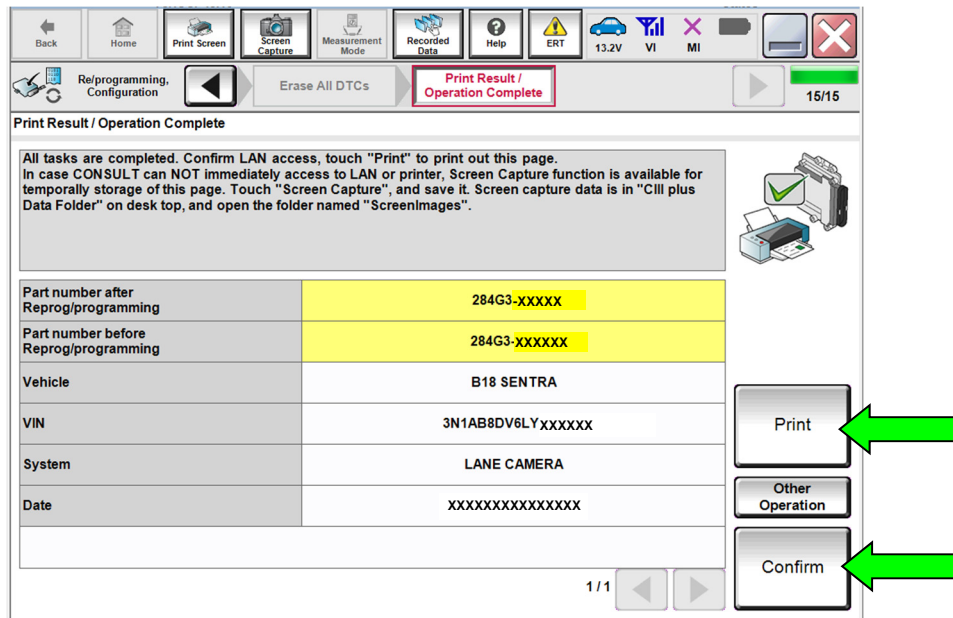


Figure 19

28. Select **Confirm** to complete reprogramming.

CLAIMS INFORMATION

Submit a Primary Part (PP) type line claim using the following claims coding:

DESCRIPTION	PFP	OP CODE	SYM	DIA	FRT
Reprogram Lane Camera Only	(1)	RX9FAA	ZE	32	0.5

OR

DESCRIPTION	PFP	OP CODE	SYM	DIA	FRT
Inspect Lane Camera Feet, Aim and Reprogram Lane Camera	(1)	RX9GAA	ZE	32	0.9

OR

DESCRIPTION	PFP	OP CODE	SYM	DIA	FRT
Inspect Lane Camera Feet, Trim, Aim and Reprogram Lane Camera	(1)	RX9HAA	ZE	32	1.0

- (1) Reference the electronic parts catalog and use the Land Departure Camera (284G3-*****) as the Primary Failed Part (PFP).

AMENDMENT HISTORY

PUBLISHED DATE	REFERENCE	DESCRIPTION
August 31, 2020	NTB20-061	Original bulletin published
February 2, 2021	NTB20-061a	Classification number updated

