



# QUALITY ACTION

## CAMPAIGN BULLETIN

### Fuel Pump Inspection Dealer Inventory

Reference: PC791  
Date: February 2, 2021

**Attention: Dealer Principal, Sales, Service & Parts Managers**

Affected Models/Years:	Affected Population:	Dealer Inventory:	SERVICE COMM Activation date:	Stop Sale In Effect
MY2021 Rogue (T33)	NA	<b>1,002</b>	February 2, 2021	<b>YES</b>

**\*\*\*\*\*Dealer Announcement\*\*\*\*\***

Nissan is issuing a quality hold and conducting a dealer inventory quality action to inspect the fuel pump installation on **1,002** specific model year 2021 Rogue vehicles identified in Service Comm. Due to a manufacturing concern that has since been resolved, the fuel pump lock ring installation may not be complete, the fuel pump lock ring engagement may not be fully engaged, and/or the fuel feed tube locking clip at the low pressure fuel pump may not be fully installed on the applicable vehicles. Dealers should follow the procedure to remedy any of these conditions, if identified during the inspection.

Affected vehicles **are subject** to stop sale and are either currently in dealer inventory or assigned and in transit to the dealer. Dealers must complete the inspection and if necessary, repair, prior to sale.

**\*\*\*\*\*What Dealers Should Do\*\*\*\*\***

**PLEASE FOLLOW THE ATTACHED INSPECTION INSTRUCTIONS:**

- Verify if vehicles are affected by this quality action using Service Comm or DBS National Service History – Open Campaigns I.D. **PC791**
  - New vehicles in dealer inventory can also be identified using DBS (Sales-> Vehicle Inventory, and filter by Open Campaign).
    - Refer to NPSB 15-460 for additional information
  - Please continue to check newly arriving inventory for campaign applicability.**
- Please **do not drive, loan, sell or trade** the specific vehicles in dealer inventory subject to this quality action.
- Use the attached procedure to inspect and, if necessary, remedy any vehicles affected by this quality action.
- The service department should submit the applicable warranty claim for the action performed so it can be closed on Service Comm and release the vehicle.

**\*\*\*\* Dealer Responsibility \*\*\*\***

It is the dealer's responsibility to check Service Comm or DBS National Service History - Open Campaign using the appropriate campaign I.D for the inspection status on each affected vehicle currently in new vehicle inventory.

**Thank you for your prompt attention to this matter.**

**NISSAN NORTH AMERICA, INC.**

Aftersales DIVISION

**\*\*\*\* Scroll down for attached Repair Instructions \*\*\*\***



## PC791 – 2021 ROGUE FUEL PUMP INSPECTION

### **⚠️ WARNING**

To avoid the risk of death or severe personal injury when inspecting and replacing fuel line parts, be sure to observe the following.

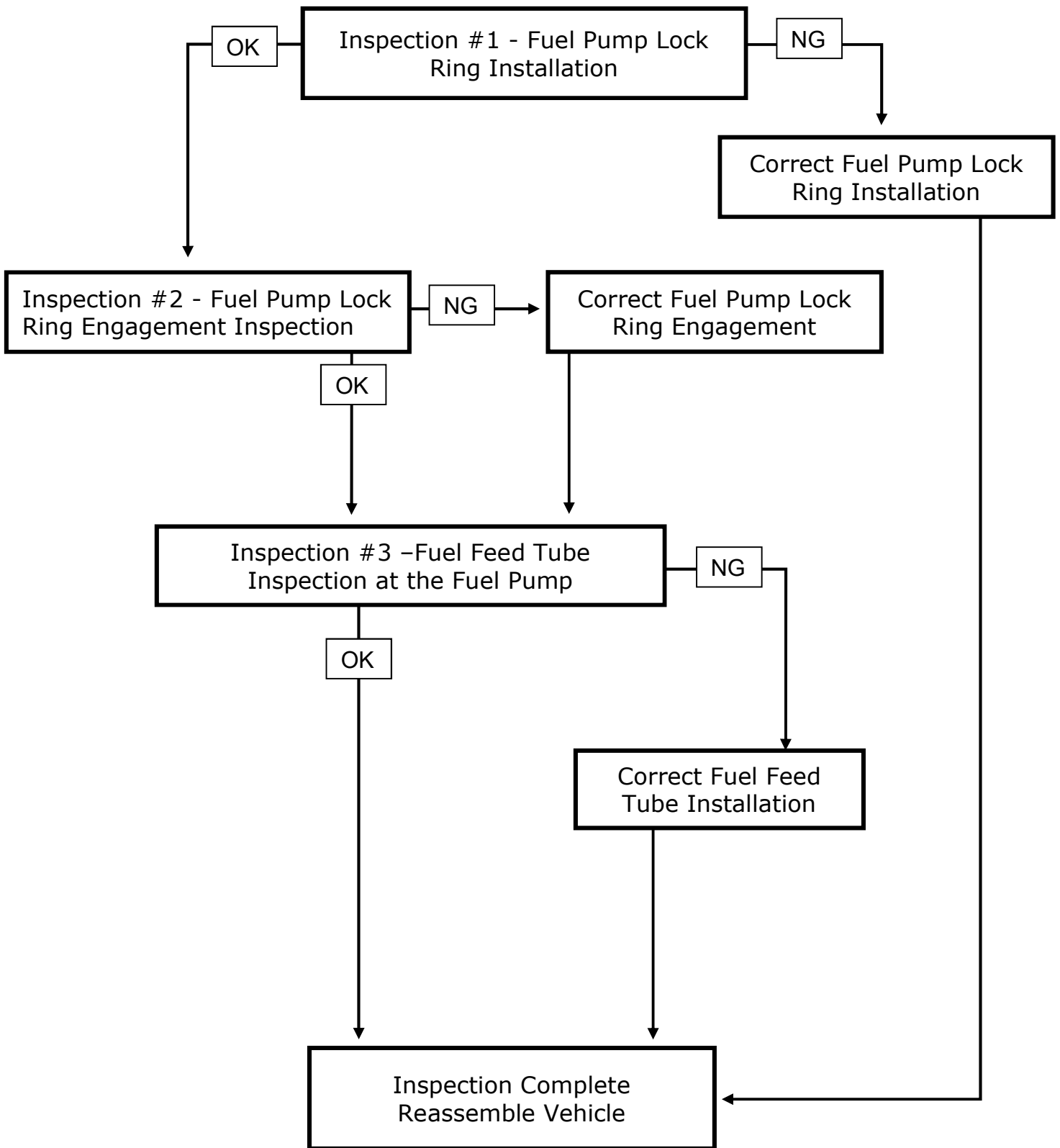
- Put a "WARNING: FLAMMABLE" sign in the workshop.
- Be sure to work in a well-ventilated area and furnish workshop with a CO2 fire extinguisher.
- Never smoke while servicing fuel system.
- Keep open flames, sparks and other ignition sources away from the work area.
- Before removing fuel line parts, perform out the following procedures:
  - 1) Release fuel pressure from the fuel lines. Refer to Work Procedure.
  - 2) Disconnect the battery cable from the negative terminal.

### **⚠️ CAUTION**

To avoid the risk minor personal injury or property damage when inspecting and replacing fuel line parts, be sure to observe the following.

- Never bend or twist tubes when they are being installed.
- After installing tubes, check that there is no fuel leakage at connections in the following steps.
  - 1) Apply fuel pressure to fuel lines with turning ignition switch "ON" (with engine stopped). Then check for fuel leakage at connections.
  - 2) Start engine and rev it up and check for fuel leakage at connections
- Perform the operation with vehicle on level ground.
- Quick connector can be disconnected when the tabs are completely depressed. Never twist it more than necessary.
- Never use any tools to disconnect quick connector.
- Never bend or twist resin tube during installation and disconnection.
- Never remove the remaining retainer on hard tube (or the equivalent) except when resin tube or retainer is replaced.

# Inspection Flow Chart



## Service Procedure

### 1. Remove the rear seat cushion.

- Open the LH and RH rear doors
- Lift upward in the areas shown in Figure 1 to disengage the seat cushion hooks
- Pull the seat cushion up and move it forward
- Disengage the seat belt buckles
- (If equipped) Lift the seat cushion up and disengage the rear heated harness connectors
- Remove the rear seat cushion and place in a safe clean area to prevent staining and damage to the seat cushion



Figure 1

### 2. Remove the inspection hole cover on the RH side of the vehicle. (Figure 2)

- Lift up the carpet on the RH side of the vehicle
- Using a suitable tool, turn the (3) clips clockwise 90 degrees
- Lift the inspection hole cover up and disconnect the fuel pump harness connector
- Move the inspection hole cover to the side

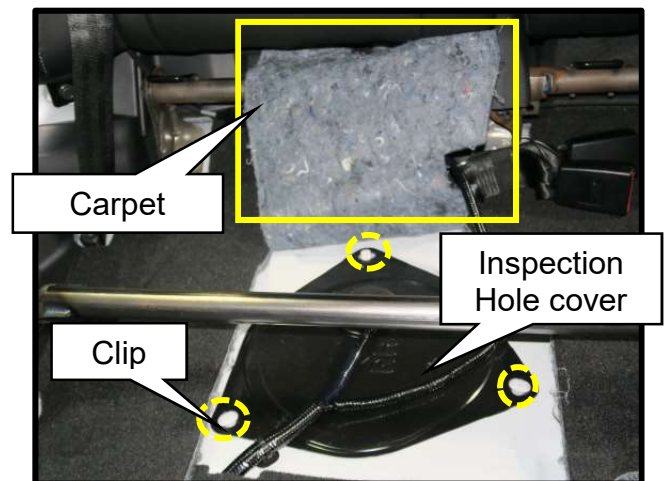


Figure 2

### 3. Release fuel pressure.

- With the fuel pump connector disconnected, start the engine and allow the engine to run until the engine quits
- Crank the engine several times to verify fuel pressure is released

## Inspection #1 Fuel Pump Lock Ring Installation

4. Verify the fuel pump lock ring is installed correctly.
  - Make sure the fuel pump lock ring is correctly installed with all locking tabs engaged with lock ring



Figure 3

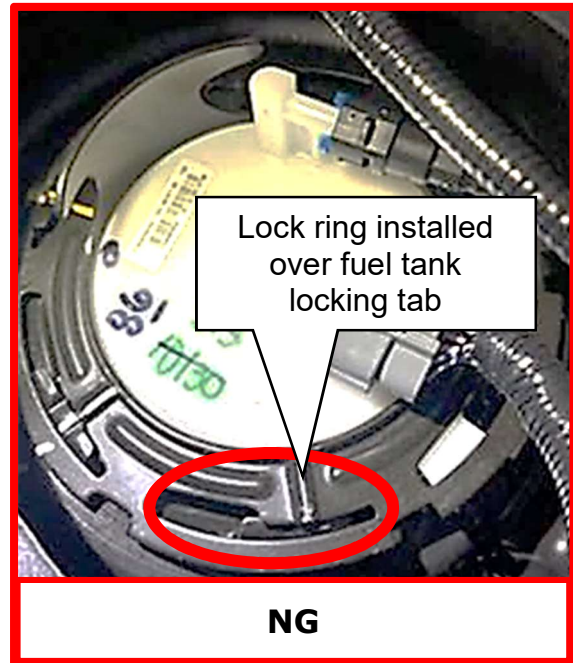


Figure 4

- If the fuel pump lock ring **IS** installed correctly, continue to **Step 6** for next inspection.
- If the fuel pump lock ring is **NOT** installed correctly, continue to **Step 5** to replace the fuel pump packing (O-ring) and correctly install the fuel pump lock ring.

### **⚠ CAUTION**

- To prevent lock ring wrench from being detached, securely hold down spinner handle by hand.
- To reduce impact caused by removal operation, use long spinner handle [handle length: 60 cm (23.62 in) or more] and slowly turn it counterclockwise.

### **Note:**

There is no need to remove the fuel pump assembly from the fuel tank for this adjustment.

## NOTICE

Use a protective covering to prevent fuel from contacting the interior of the vehicle during fuel tube removal.

5. Remove and correctly install the fuel pump lock ring.
  - a) Disconnect the fuel feed tube by depressing the tabs and pulling out on the fuel feed tube
  - b) Using J-45747 remove the fuel pump lock ring
  - c) Remove the fuel pump lock ring
  - d) Inspect the lock ring for deformations, if deformations are found replace the lock ring
  - e) Remove the fuel pump assembly packing (O-ring) by moving the fuel pump to one side and carefully working the O-ring over the top of the fuel pump assembly
  - f) Install NEW fuel pump packing (O-ring) over the fuel pump and into the groove on the fuel tank
  - g) Center the fuel pump in the fuel tank
  - h) Align the fuel pump lock ring onto the fuel tank locking tabs
  - i) Make sure all (6) locking tabs are aligned within the lock ring
  - j) Using J-45747 and tighten the fuel pump lock ring until the raised portion of the lock ring is engaged into the groove of the fuel tank locking tab (Figure 6)
  - k) Align the tabs on the locking clip with the grooves in the fuel feed tube and push the fuel feed tube onto the fuel pump assembly until a click sound is heard
  - l) Inspection complete, continue to **Step 9** for reassembly

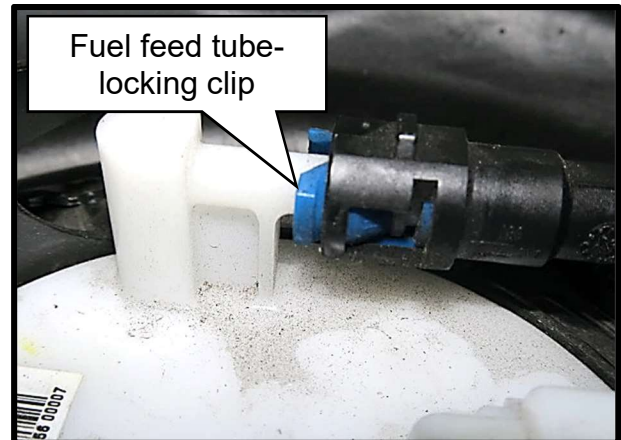


Figure 5



Figure 6

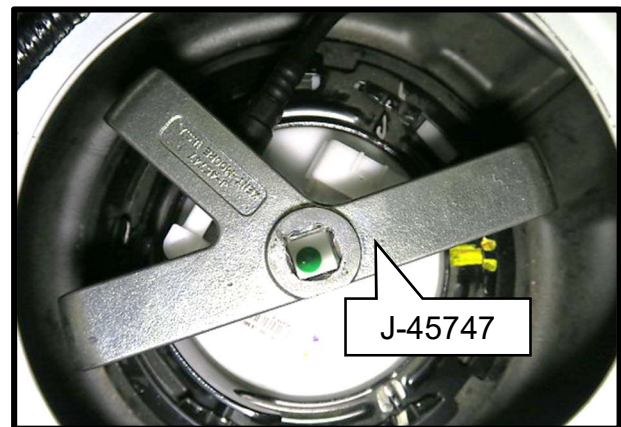


Figure 7

## Inspection #2 - Fuel Pump Lock Ring Engagement Inspection

6. Verify the fuel pump lock ring is fully engaged.
  - Be sure the raised portion on the fuel pump lock ring is resting in the groove of the fuel tank locking tab shown in Figure 8



Figure 8



Figure 9

- If the locking Ring is positioned correctly (Figure 8), continue to **Step 7**
- If the locking ring is **NOT** positioned correctly (Figure 9), use J-45747 to correctly position the locking ring.

## Inspection #3 - Fuel Feed Tube Inspection at Fuel Pump

7. Inspect the fuel feed tube connection at the low pressure fuel pump.
  - Verify the blue fuel feed tube locking clip is fully installed into the fuel feed line as shown in Figure 10
  - Pull back on the fuel feed tube to verify it is securely connected

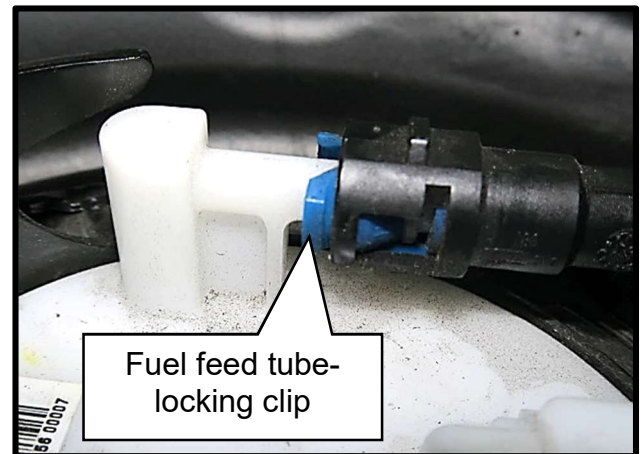


Figure 10

- If the fuel feed tube **IS** secured correctly, continue to **Step 9**.
- If the fuel feed tube is **NOT** correctly secured, continue to **Step 8** to secure the fuel feed line.



## NOTICE

Use a protective covering to prevent fuel from contacting the interior of the vehicle during fuel tube removal.

8. Remove and reinstall the fuel feed line at the low pressure fuel pump.

- Disconnect the fuel feed tube by depressing the tabs and pulling out on the fuel feed tube
- Align the tabs on the locking clip with the grooves in the fuel feed tube and push the fuel feed tube onto the fuel pump assembly until a click sound is heard
- Pull back on the fuel feed tube to verify it is secured correctly
- Continue to **Step 10**

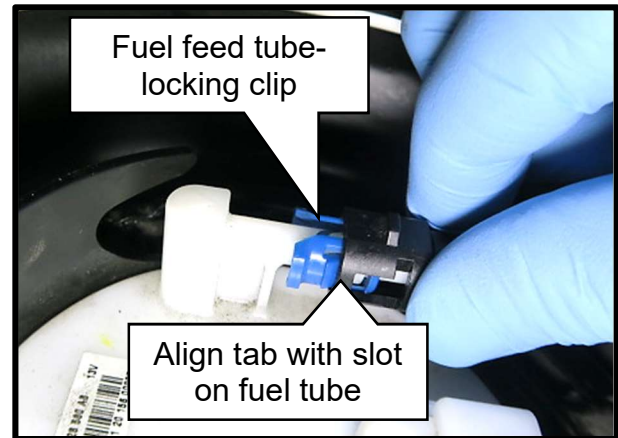


Figure 11

9. Reassemble the vehicle in reverse order.

10. Connect CIII plus VI.

11. Select All Systems.

12. Erase ALL DTC's.

## Parts Information

Part Number	Description	Qty
(1)	PACKING - FUEL GAUGE	1
(1)	PLATE - LOCK, FUEL GAUGE	1

**(1) Order parts by VIN using the EPC.**

## CLAIMS INFORMATION

Submit a "CM" line claim using the following claims coding:

Campaign ("CM") ID	Description:	Op Code	FRT
PC791	Inspect fuel feed tube and lock ring and adjust lock ring and/or fuel feed tube as needed.	PC7910	0.6 Hr
	Inspect fuel feed tube and lock ring, replace packing and reinstall/replace lock ring	PC7911	0.7 Hr

