

Classification:

FA21-002

Reference:

ITB21-002

 COPYRIGHT© NISSAN NORTH AMERICA, INC.
 Date:

February 26, 2021

PREVENT FRONT AXLE THREAD DAMAGE DURING AXLE NUT REMOVAL

APPLIED VEHICLES: 2019-2021 QX50 (J55)

SERVICE INFORMATION

If an Applied Vehicle needs to have a front axle nut removed, for any reason, the staking of the nut into the axle keyway must first be removed. The essential tool (part number # J-52982, Figure 1) required to remove the nut staking, is called out as a "Cape Chisel" in the Electronic Service Manual (ESM), and must be used to prevent thread damage to the axle (see Figure 2 on page 2).

- The Cape Chisel arrived at dealers in December of 2020.
- Damaged threads, due to improper removal of the stake placed in the nut, will not be covered by warranty.

For information on using the Cape Chisel, refer to the Electronic Service Manual (ESM): Section **TRANSMISSION & DRIVELINE > FRONT AXLE > REMOVAL AND INSTALLATION > FRONT DRIVE SHAFT > LH/RH.**



Figure 1

Infiniti Bulletins are intended for use by qualified technicians, not 'do-it-yourselfers'. Qualified technicians are properly trained individuals who have the equipment, tools, safety instruction, and know-how to do a job properly and safely. **NOTE:** If you believe that a described condition may apply to a particular vehicle, **DO NOT** assume that it does. See your Infiniti retailer to determine if this applies to your vehicle.

- Figure 2 is an example of threads damaged by improper axle nut removal.

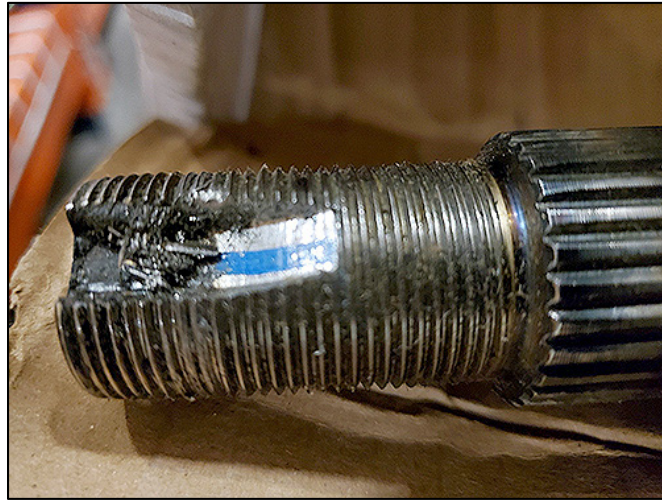


Figure 2

AMENDMENT HISTORY

PUBLISHED DATE	REFERENCE	DESCRIPTION
February 25, 2021	ITB21-002	Original bulletin published