

**FT4869R1 - Surge tank cover Chafing on Components**

**Technical writer name**  
Devanand

**Manual section** 01

First Level Parts (100% of 415 vehicles)		
Material	Part Number	QTY
WASHER FLAT M8 SS HD DIN7349	N30731	4
WASHER LOCK CURV M8 SS DIN 128	N28220	8
BRACKET LH	N73387-1	1
BRACKET RH	N73387-2	1
BOLT	N31413	4
WASHER	N28219	4

**Nb hours Level 1** 0.67 hr **MQR** 7621-1762  
**Nb hours Level 2** 1 hr

Disposal of parts		
Removed parts are:		When the retained check box is checked, the parts must be retained and returned in accordance with the usual warranty procedure to be reimbursed.
Discarded	Retained	
X	-	

Second Level Parts (70% of 415 vehicles)		
Material	Part Number	QTY
SUPPORT HINGE FOR CANOPY RAD	N99962-1	1
SUPPORT HINGE FOR CANOPY RAD	N99962-2	1
WASHER LOCK CURV M8 SS DIN 128	N28220	4
SCREW 3/8-16X5/8 CAP SHLD SS	N71434	2
NUT 3/8-16 HEX	N21454	2
NUT HEX M8 FLANGED WITH INSERT	N43233	2

Shop Supply (100% of 415 vehicles)		
Material	Part Number	QTY
SUPPORT HINGE FOR CANOPY RAD	9985283	1.7 oz

Client	Order	Road numbers		VIN		QTY	Lang.	Customer	Target market	Plant	Config moteur	Model	NR	R1	R2
New York City Transit - New York	L958	5439	5442	S92J9G9775533	S92J9G9775631	4	E	NYCT	US	PLB	TD	60	x	x	
New York City Transit - New York	L959	5443	5443	S92J0H9776118	S92J0H9776118	1	E	NYCT	US	PLB	TD	60	x	x	
New York City Transit - New York	LA23	5485	5530	S92J5J9776380	S92J6J9776517	46	E	NYCT	US	PLB	TD	60	x	x	
New York City Transit - New York	LA73	8504	8507	L82J8J9776445	L82J8J9776476	4	E	NYCT	US	PLB	TD	40	x	x	
New York City Transit - New York	LA76	8508	8633	L82J9J9776924	L82J8K9777144	125	E	NYCT	US	PLB	TD	40	x	x	
New York City Transit - New York	LB29	5531	5566	S92J9J9776687	S92J6J9776873	36	E	NYCT	US	PLB	TD	60	x	x	
New York City Transit - New York	LB59	5444	5484	S92J7H9776195	S92J6H9776379	41	E	NYCT	US	PLB	TD	60	x	x	
New York City Transit - New York	LB78	8526	8526	L82J3K9776984	L82J3K9776984	1	E	NYCT	US	PLB	TD	40	x	x	
New York City Transit - New York	LB99	5567	5602	S92J2J9776935	S92J5K9777000	36	E	NYCT	US	PLB	TD	60	x	x	
New York City Transit - New York	LC32	8634	8754	L82JXK9777145	L82J5K9777277	121	E	NYCT	US	PLB	TD	40	x	x	

Jean-Nicolas Fournier Digitally signed by Jean-Nicolas Fournier  
 DN: cn=Jean-Nicolas Fournier, o=Nova Bus, email=jean-nicolas.fournier@volvo.com, c=CA  
 Date: 2021.03.09 17:52:05 -05'00'

# MQR 7621-1762 : Service Solution (Shim)

## Surge tank cover Chafing Components – Interferences & Solutions

Case Manager: Jeffrey Vegh

2020-09-08

Revision 01



# Agenda



## Subjects

1. Contract (Vehicles Affected)
2. SRT (repair time / scenario)
3. Bill of Material
4. Location of rework
5. Solution required (Sight Glass contact : Yes / No)
6. Rework Instructions
7. Installation
8. Validation

1) All buses from the following list:

Order Number	Total Qty
L998	97
LA67	200
LA68	45
LA69	40
LB45	80
LB28	150
LB75	40

2) SRT :

Level 1 = 40min

Level 2 = 20min

AFFECTED CONFIGURATION



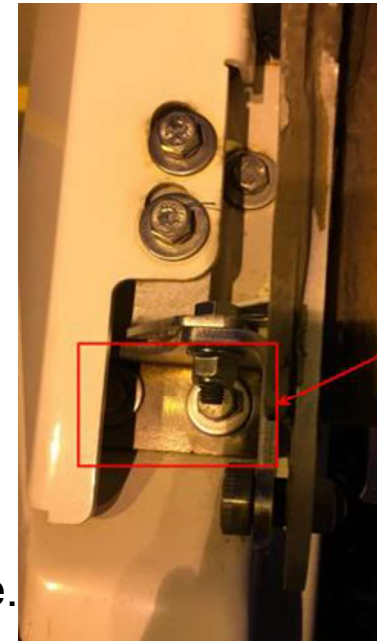
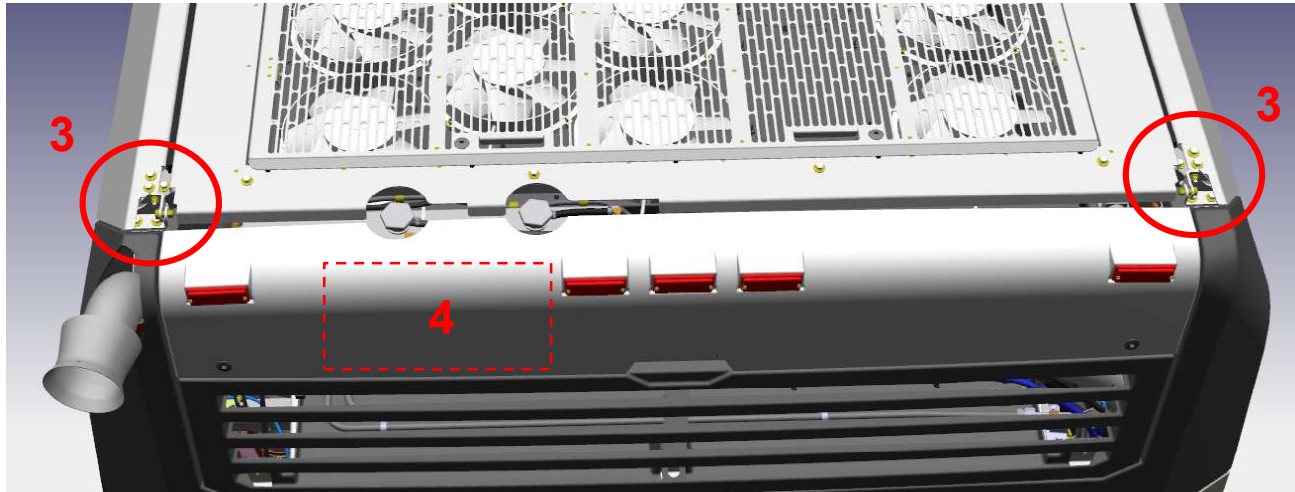
NOT-AFFECTED CONFIGURATION  
(L729/L738/L777/L859/L860/L937)



### 3) Bill of Material

Level 1 (100% of 652 buses = 652 kits)				
Item	Part #	QTY	Units	Description
1	N34792	8	pc	WASHER FLAT M8 SS
2	N28220	4	pc	Lock Washer M8 SS DIN 128
3	N43233	2	pc	NUT HEX M8 FLANGED WITH INSERT
Level 2 (2% of 652 buses = 13 kits)				
Item	Part #	QTY	Units	Description
4	680796	2	LF	ADHESIVE DOUBLE SIDE TAPE 0.045 X 0.75IN
5	N28219	4	pc	WASHER FLAT M8 OVERSIZE SS
6	N32920	2	LF	TAPE NEOPRENE 5/8"W X 1/4"T
7	91287A155 (McMaster)	4	pc	M8 x 1.25 mm Thread, 35 mm Long, SS A2
Shop Supply (1 bottle for the total of 652 buses)				
8	9985283	1,7	oz	Loctite 242

#### 4) Zone of rework:



a) Top, Rear, Curb / Street side of Canopy.

b) Use adequate safety equipment when working on top of vehicle.

5) Check for sight glass contact (YES see Step 6 / NO see Step 7)

a) Visual inspection of indent / grooves on Canopy



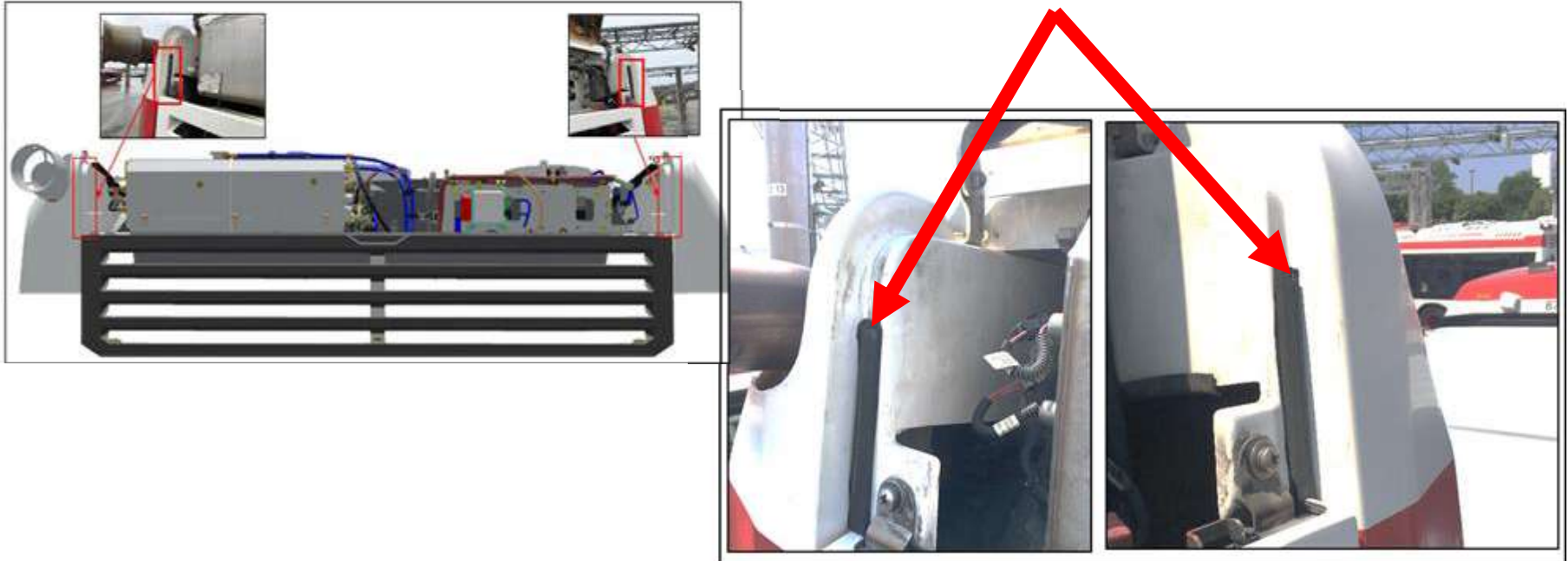
Bus with Sight glass contact

b) Once bracket is Shimmed and foam tape is applied a clearance of 3 – 4 mm will be achieved.

## 6) Rework Instructions: (Sigh Glass contact ONLY)

- a) Clean area with isopropyl alcohol
- b) Apply double sided tape item 4 (680796) on neoprene item 6 (N32920)
- c) Install as shown on pictures below

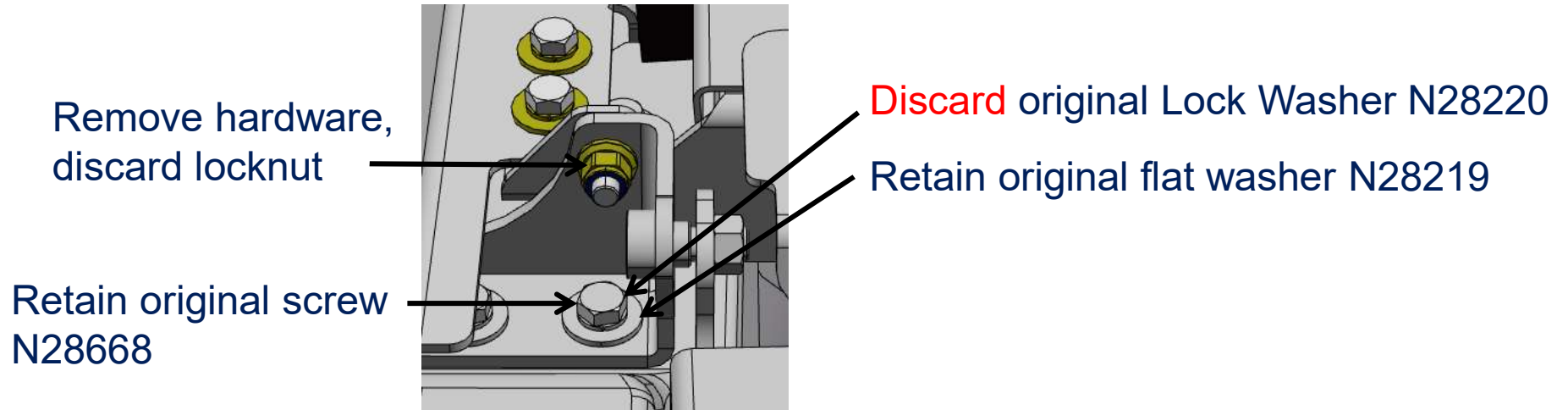
Closed cell  $\frac{1}{4}$ " thick foam tape installed to shim canopy outward  
Away from coolant sight glass



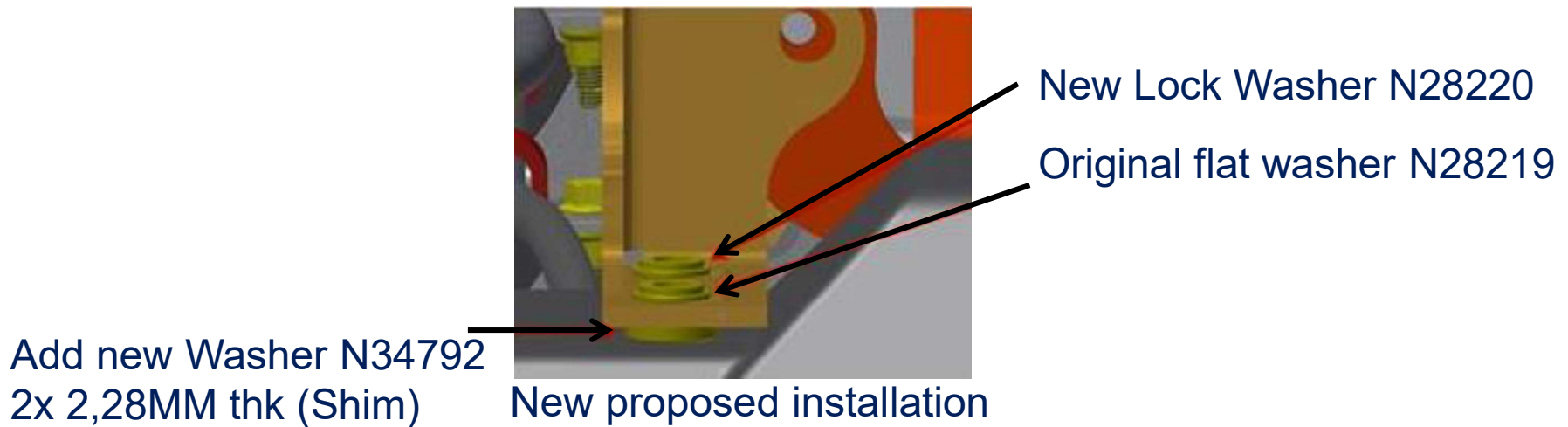


## 7) Installation Instructions (Shim) :

### a) Retain indicated hardware

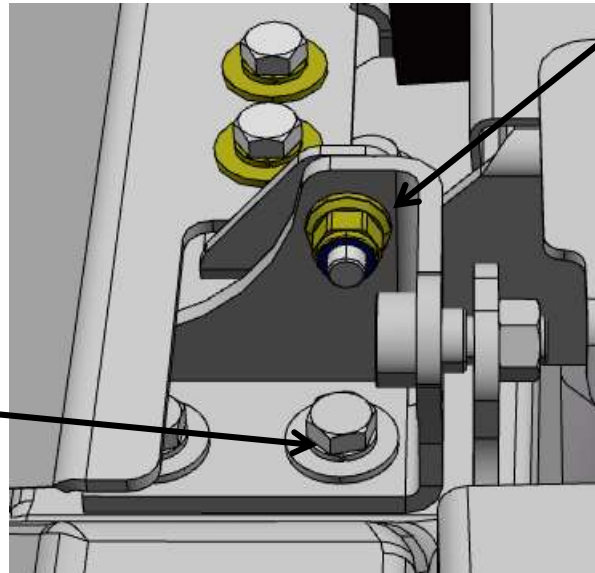


Original Installation



## b) Installation Instructions:

Torque  $27.2 \pm 2$  Nm +  
Loctite 242 (on threads)  
Add Torque seal

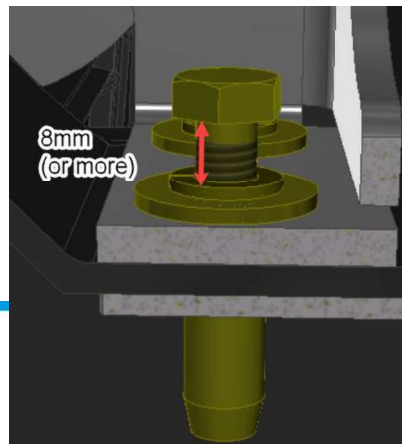


Reinstall original screw N31413  
Retain original flat washer N29011  
install new Lock Nut N43233  
Torque  $27.2 \pm 2$  Nm  
Add Torque seal  
2 places

Note: Due to tolerance stack up of the bonded plate holding the Rivnut in which this screw is secured, a longer screw could be required. (ie; 91287A155 (McMaster M8x35))

Validate screw engagement is 8mm -1/+xx (measure gap once screw begins to enter threaded insert, as show)

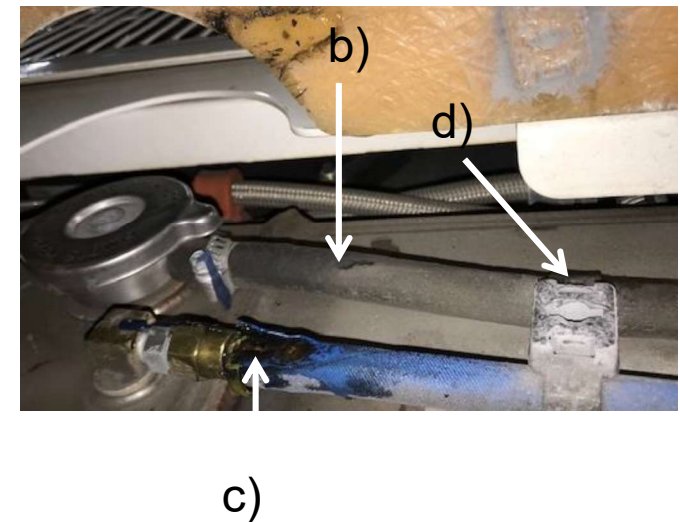
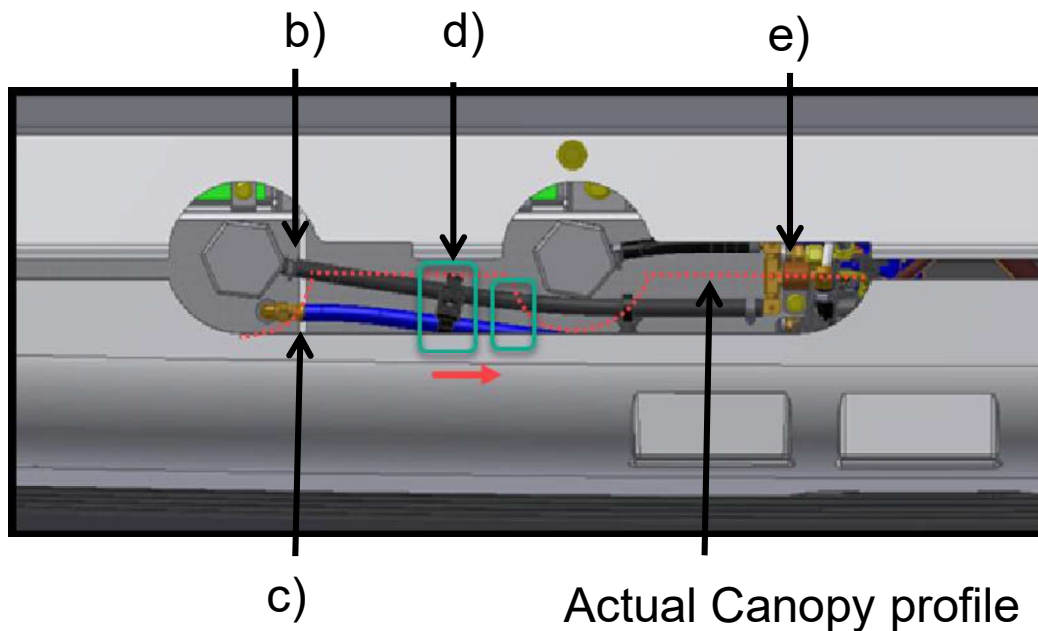
4 places



## 8) Validation : With or Without sigh glass contact

Gain of 4mm to avoid contact of the following components;

- b) Rubber Tube Chafing on Canopy
- c) Fitting and Rubber Tube Chafing on Canopy
- d) Tyton Chafing on Canopy (relocate if required, as shown)
- e) P-Clamp Chafing on Canopy



bring life  
to your city



**NOVABUS**