

**WINDOWS**

## Purpose

This document outlines the steps for replacing the foam tape on vented and egress 3000 Series windows.

## Resources Required

- 1-2 persons, depending on task
- Phillips screwdriver
- Stepladder
- Prop to keep window open during repair (Egress windows only)
- Scraper tool
- New foam tape, PN 236891

## Procedure

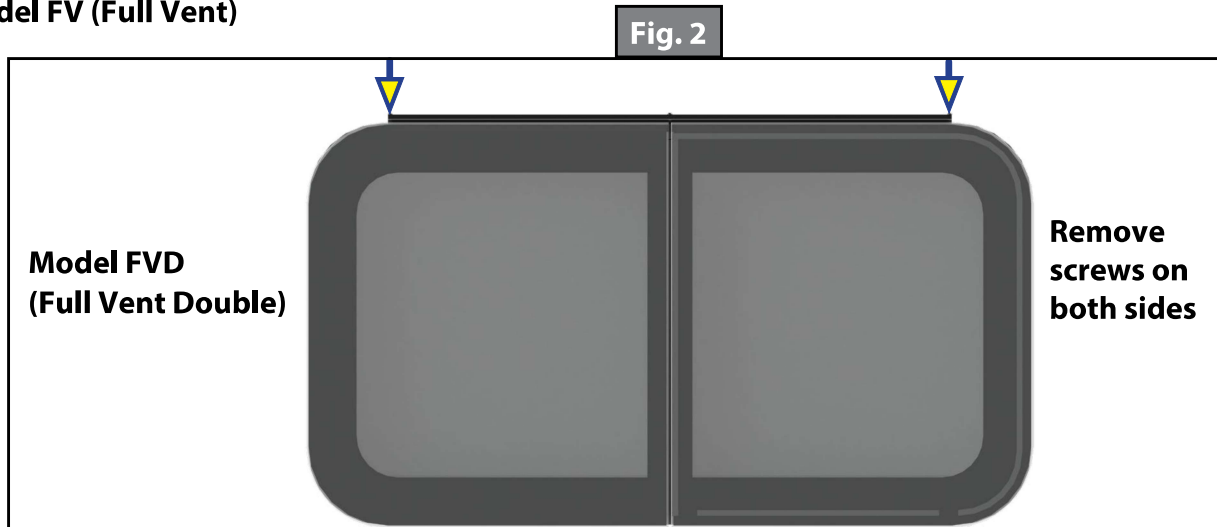
**NOTE:** The foam tape replacement will be completed with the window installed in the RV wall. The following photos are for illustrative purposes only.

### Vented Windows

1. Open window(s) far enough to clear the frame (Fig. 1).
2. Remove screw(s) from the top of the window frame (Figs. 1 and 2).
  - A. For Model FV (Full Vent), remove screw on one side of the frame.
  - B. For Model FVD (Full Vent Double), remove screws on both sides of the frame.



Model FV (Full Vent)



Model FVD (Full Vent Double)

Remove screws on both sides

## WINDOWS

3. Slowly slide out the window part of the way (Fig. 3).
4. If window has a spacer, remove spacer from the bottom of the window (Fig. 4).

**NOTE:** Note orientation of spacer material.

**NOTE:** For Model FVD, the 3" and 4" operations do not have spacers. However, the 7" and 9" operations have spacers.

5. Complete removal of window and set aside.
6. For Model FVD, remove the second window and set aside.
7. Note locations of weep holes in the spaces between the foam tape on the window frame (Fig. 5).

Fig. 3

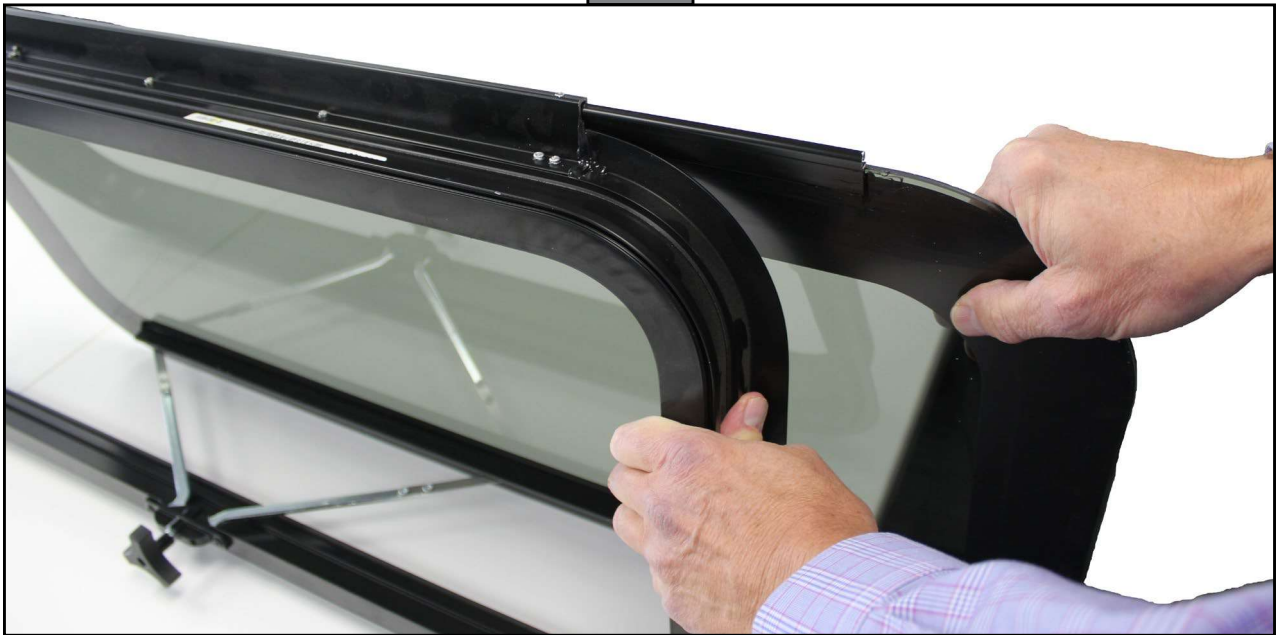


Fig. 4

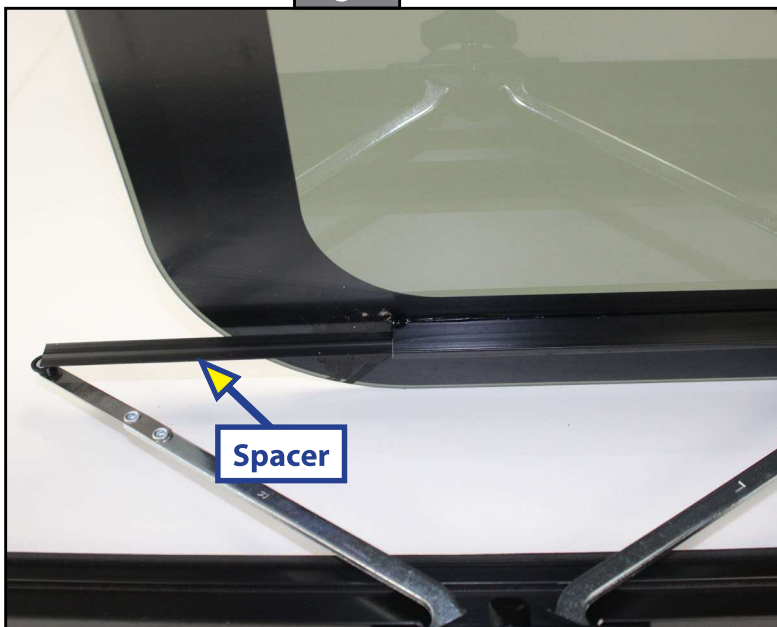


Fig. 5

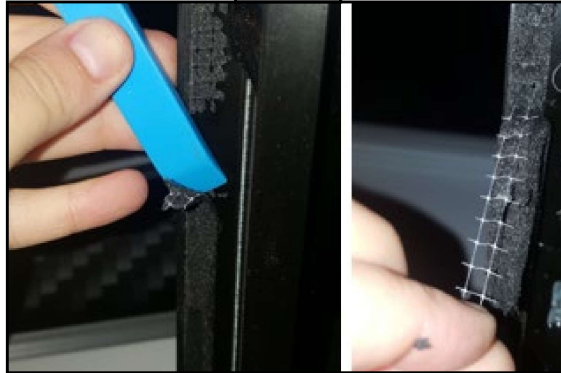


## WINDOWS

8. Cut new foam tape into two pieces, including a section for the bottom between the weep holes and a continuous piece for the top section around the remaining circumference of the window frame (Fig. 7).
9. Remove the existing foam tape from the frame surface.

**NOTE:** If the tape is difficult to remove, use a tool to peel up an end of the tape (Fig. 6). Use a scraping tool to remove excess foam tape from the frame surface. It is acceptable if a small amount of residual tape remains on the surface.

Fig. 6



10. Remove plastic backing from the foam tape.
11. Install the sections of foam tape (Fig. 7).
  - A. Do not stretch the foam tape around the radius of the window.
  - B. The tape replacement on the sides and upper section must be completed with one continuous piece, but must also be installed below the hinge on top to prevent the hinge from pinching the seal.

**NOTE:** The foam tape will be flush with the bottom and sides of the window frame, but, in order to accommodate the hinge, there will be a slight overhang of the seal on the top side of the frame.

- C. Make sure to leave weep holes in the bottom of the frame in the same location.

Fig. 7



**WINDOWS**

12. Reinstall window part of the way into the frame (Fig. 8) until the edge of the window approaches the second arm of the opener.
13. If applicable, feed the spacer into the bottom spacer rail utilizing the correct orientation of the material (Fig. 9).
14. Complete reinstallation of the window.
15. For Model FVD, reinstall second window.
16. Reinstall screw on top of the frame.
17. For Model FVD, reinstall second screw on top of frame.
18. Close the window(s).

Fig. 8

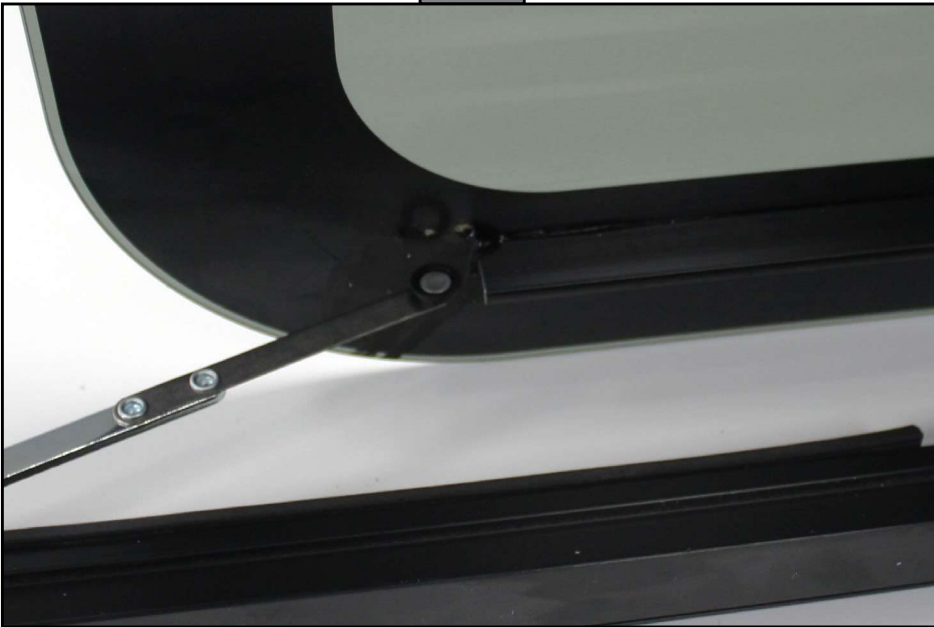
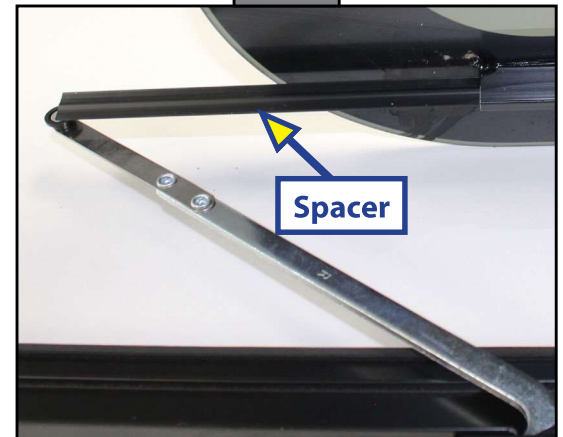


Fig. 9

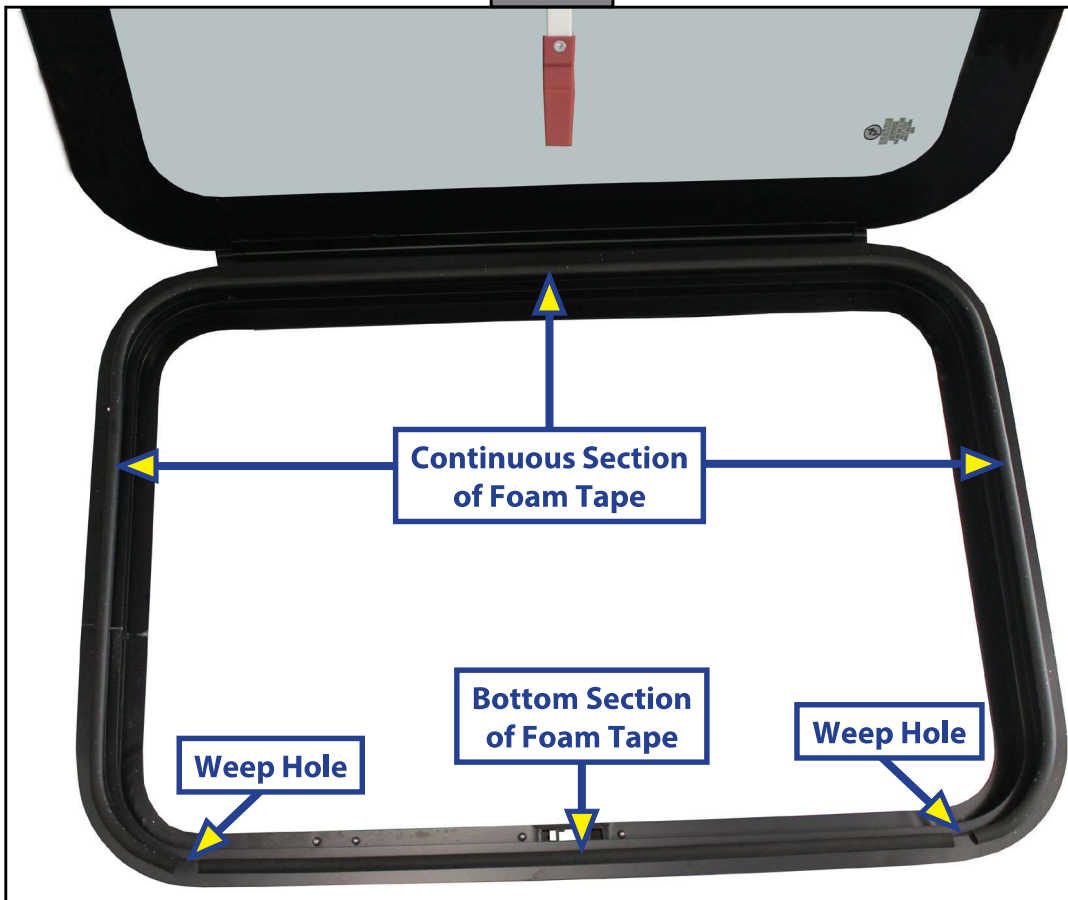


## WINDOWS

### Egress Windows

1. Open the window and prop it open (Fig. 10).
2. Note location of weep holes in the spaces between the foam tape on the window frame (Fig. 10).
3. Cut new foam tape into two pieces, including a section for the bottom between the weep holes and a top section around the remaining circumference of the window frame.

Fig. 10



4. Remove the existing foam tape from the window frame.

**NOTE:** If the tape is difficult to remove, use a tool to peel up an end of the tape (Fig.11). Use a scraping tool to remove excess foam tape from the frame surface. It is acceptable if a small amount of residual tape remains on the surface.

Fig. 11



## WINDOWS

5. Remove plastic backing from the foam tape.
  6. Install the sections of foam tape (Fig. 10).
    - A. Do not stretch the foam tape around the radius of the window.
    - B. The tape replacement on the sides and upper section must be completed with one continuous piece, but must also be installed below the hinge on top to prevent the hinge from pinching the seal.
- NOTE:** The foam tape will be flush with the bottom and sides of the window frame, but, in order to accommodate the hinge, there will be a slight overhang of the seal on the top side of the frame.
- C. Make sure to leave weep holes in the bottom of the frame in the same location.
7. Close the window.

As a supplier of components to the RV industry, safety, education and customer satisfaction are our primary concerns. Should you have any questions, please do not hesitate to contact us at (574) 537-8900 or by email at [customerservice@lci1.com](mailto:customerservice@lci1.com). Self-help tips, technical documents, product videos and a training class schedule are available at [lippert.com](http://lippert.com) or by downloading the MyLCI app.