



72-21-01 - Seat Memory Inoperative, Loss Of Basic Settings

Release date: 4/1/2021

Condition

Applicable Vehicles					
Model(s)	Year	Eng. Code	Trans. Code	VIN Range From	VIN Range To
Atlas	2019-2021	All	All	CA_KC602912	CA_MC561902
Atlas CrossSport	2020-2021	All	All	CA_LC200225	CA_MC214615

Revision Table			
Instance Number	Published Date	Version Number	Reason For Update
2062852/1	4/1/21	72-21-01	Original publication.

Memory Seats Inoperative, Loss of Basic Settings.

One or more of the following may be stored in the Driver Seat Adjustment Control Module (0036) -**J810**-.

DTC	Description
B135454	Seat height adjustment motor no basic setting
B201000	No basic setting



NOTE:

DO NOT diagnose or replace components due to DTC B135454, B201000 faults **before** performing the update function as explained in this bulletin.

Technical Background

The memory seat function may become inoperative due to seat memory parameterization

Production Solution

Update to Driver Seat Adjustment Control Module -**J810**- parameters as of 1/27/2021.



72-21-01 - Seat Memory Inoperative, Loss Of Basic Settings

Release date: 4/1/2021

Service

Software Configuration Procedure.

Under OBD diagnostic in 0036:

- Select identification
- Select show complete identification
- Select Identification of parameterization

- Review the [LO] Basic Structure version top number. Numbers below 5 needs to be updated.



NOTE:

If the version number is already at 5 this bulletin does not apply and further diagnosis is required.

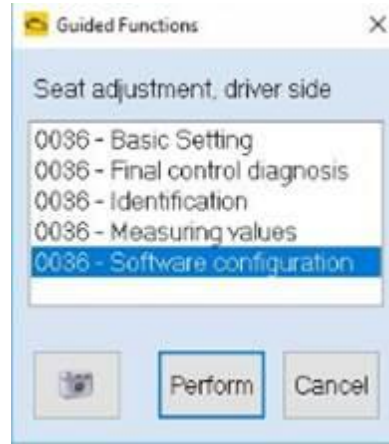
Attribute	Value
> Workshop code and date of last update	
> Component group and serial number	
> Date of last coding	
> FAZIT Identification	
> Manufacturer test stand number	
> Manufacturer code	
∨ Identification of parameterization	
∨ —	
∨ [LO]_Basic Structure: VW Applica	
Version number	03
∨ [LO]_Basic Structure: VW Applica	
Version number	12



72-21-01 - Seat Memory Inoperative, Loss Of Basic Settings

Release date: 4/1/2021

- In address word 0036 enter Guided Functions, select and perform Software Configuration.



- After the update go back to Identification of parameterization and verify the version has updated to 5.
- Re-enter Guided Functions and perform test plan for Basic Settings.

Attribute	Value
Workshop code and date of last update	
Component group and serial number	
Date of last coding	
FAZIT Identification	
Manufacturer test stand number	
Manufacturer code	
Identification of parameterization	
—	
[LO]_Basic Structure: VW Applica	
Version number	05
[LO]_Basic Structure: VW Applica	
Version number	12



72-21-01 - Seat Memory Inoperative, Loss Of Basic Settings

Release date: 4/1/2021

Warranty

To determine if this procedure is covered under Warranty, always refer to the Warranty Policies and Procedures Manual ¹⁾					
Model(s)	Year(s)	Eng. Code(s)	Trans. Code(s)	VIN Range From	VIN Range To
Atlas	2019-2021	All	All	CA_KC602912	CA_MC561902
Atlas CrossSport	2020-2021	All	All	CA_LC200225	CA_MC214615
SAGA Coding					
Claim Type:		Use applicable Claim Type ¹⁾			
Service Number:	Damage Code	HST	Damage Location (Depends on Service No.)		
7293	0039	--	--		
Parts Manufacturer		Atlas, Atlas Cross Sport		WVO ²⁾	
Labor Operation ³⁾ : Charge Battery			27068950 = See Elsa for latest time units.		
Labor Operation ³⁾ : Update Programming Memory Seat Module			72931999 = 50TU		
Causal Part: Select Labor Operation			72931999		
Diagnostic Time ⁴⁾					
GFF Time expenditure	01500000 = 00 TU		NO		
Road Test	01210004 = 10 TU		NO		
Technical Diagnosis	01320000 = 00 TU max.		NO		
Claim Comment: Input "As per Technical Bulletin 2062852" in comment section of Warranty Claim.					
¹⁾ Vehicle may be outside any Warranty in which case this Technical Bulletin is informational only.					
²⁾ Code per warranty vendor code policy.					



72-21-01 - Seat Memory Inoperative, Loss Of Basic Settings

Release date: 4/1/2021

- 3) Labor Time Units (TUs) are subject to change with ELSA updates.
- 4) Documentation required per Warranty Policies and Procedures Manual.

Required Parts and Tools

No Special Parts required.

Tool Description	Tool No:
Midtronics Battery Tester/Charger	GRX3000VAS or MTRMSP0702 battery maintainer/charger
VAS Diagnostic Tool	VAS 6150/X & VAS 6160/X and ODIS Service with current online updates

Additional Information

All part and service references provided in this Technical Bulletin are subject to change and/or removal. Always check with your Parts Dept. and Repair Manuals for the latest information.