



# Service Bulletin

Bulletin No.: 19-NA-220

Date: March, 2021

## TECHNICAL

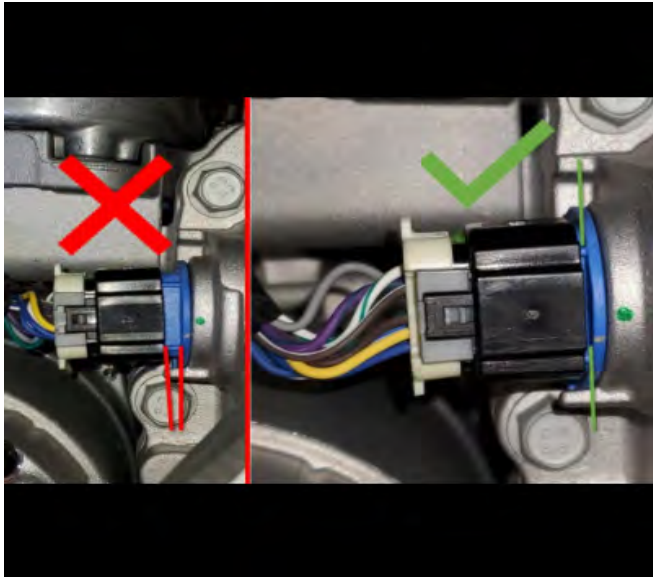
**Subject: Loss of Propulsion, Malfunction Indicator Lamp (MIL) Illuminated - DTC P0A3F and/or P1B03 Set**

**This bulletin replaces PIP5641D. Please discard PIP5641D.**

Brand:	Model:	Model Year:		VIN:		Engine:	Transmission:
		from	to	from	to		
Chevrolet	Bolt EV	2017	2021	—	—	—	—

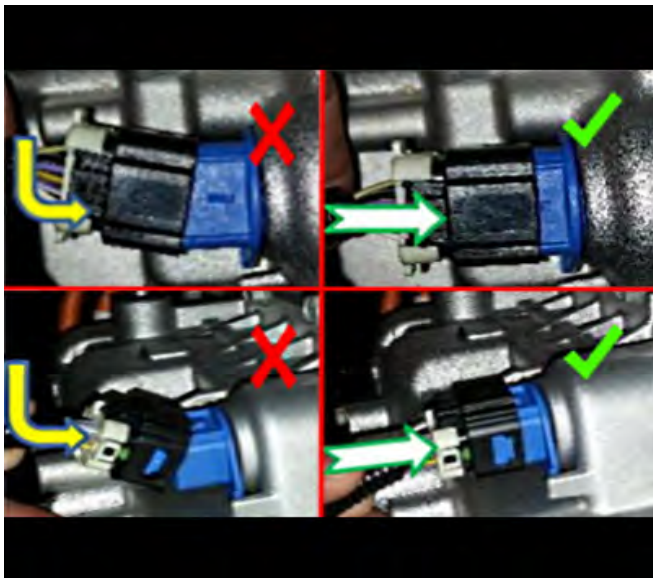
<b>Involved Region or Country</b>	North America, Middle East, South Korea, Brazil
<b>Condition</b>	<p>Some customers may comment that a loss of propulsion was experienced.</p> <p>⇒ The vehicle may operate normally after the vehicle is restarted at a later time. History code P0A3F and sometimes P1B03 may set.</p> <p>Some technicians may find one or both of the following DTCs set in the Hybrid/EV Powertrain Control Module:</p> <ul style="list-style-type: none"> <li>• P0A3F</li> <li>• P1B03</li> </ul> <p>⇒ If the vehicle has these high voltage DTCs in addition to P0A3F and/or P1B03, the harness may not be the cause. Contact GM Technical Assistance (TAC) for further guidance:</p> <ul style="list-style-type: none"> <li>• P0A78</li> <li>• P0C01</li> <li>• P0C0B</li> </ul>
<b>Cause</b>	<p>This condition may be caused by a spread terminal on the vehicle harness connection X2 on the T12 transmission assembly.</p> <p>⇒ The terminals may not have been perfectly aligned during installation at the vehicle assembly plant.</p>
<b>Correction</b>	<p>Replace the Engine Harness.</p> <p>Due to the sensitivity of resolver (motor position sensor) circuits, replacing the connector with a terminated lead is not permitted per SI document ID 4583435. These diagnostic codes result in a loss of propulsion event on the vehicle.</p> <p>Exercise care when connecting the new harness to X2 on the transmission by aligning the connector bodies and not attempt to install at an angle.</p>

**Connector Examples**



5518453

Ensure that the connector is fully seated.



5409322

Showing both proper and improper alignment of the X2 connector.



5409321

Example case of damaged terminals. Terminals do not need to have visible damage to set DTCs P0A3F and P1B03.

**Parts Information**

Use the Vehicle Identification Number (VIN) and the GM Electronic Parts Catalog (EPC) to determine the which Engine Wiring Harness to order.

**Warranty Information**

For vehicles repaired under warranty, use:

Labor Operation	Description	Labor Time
5430940	Engine Wiring Harness Replacement	Use Published Labor Operation Time

<b>Version</b>	4
<b>Modified</b>	<p>Released February 4, 2020</p> <p>February 17, 2020 – Added the 2020 Model Year, removed the VIN breakpoint, added Brazil to the Involved Region or Country section and added an additional comparison graphic.</p> <p>May 13, 2020 – Removed the part numbers and added EPC information to the Parts Information section, added information to the Condition section and updated the warranty coverage statement.</p> <p>March 8, 2021 – Added the 2021 Model Year and updated the Warranty coverage statement under Warranty Information.</p>

GM bulletins are intended for use by professional technicians, NOT a "do-it-yourselfer". They are written to inform these technicians of conditions that may occur on some vehicles, or to provide information that could assist in the proper service of a vehicle. Properly trained technicians have the equipment, tools, safety instructions, and know-how to do a job properly and safely. If a condition is described, DO NOT assume that the bulletin applies to your vehicle, or that your vehicle will have that condition. See your GM dealer for information on whether your vehicle may benefit from the information.



WE SUPPORT VOLUNTARY  
TECHNICIAN  
CERTIFICATION