

**Classification:**

EL12-070

**Reference:**

ITB12-068

**Date:**

October 12, 2012

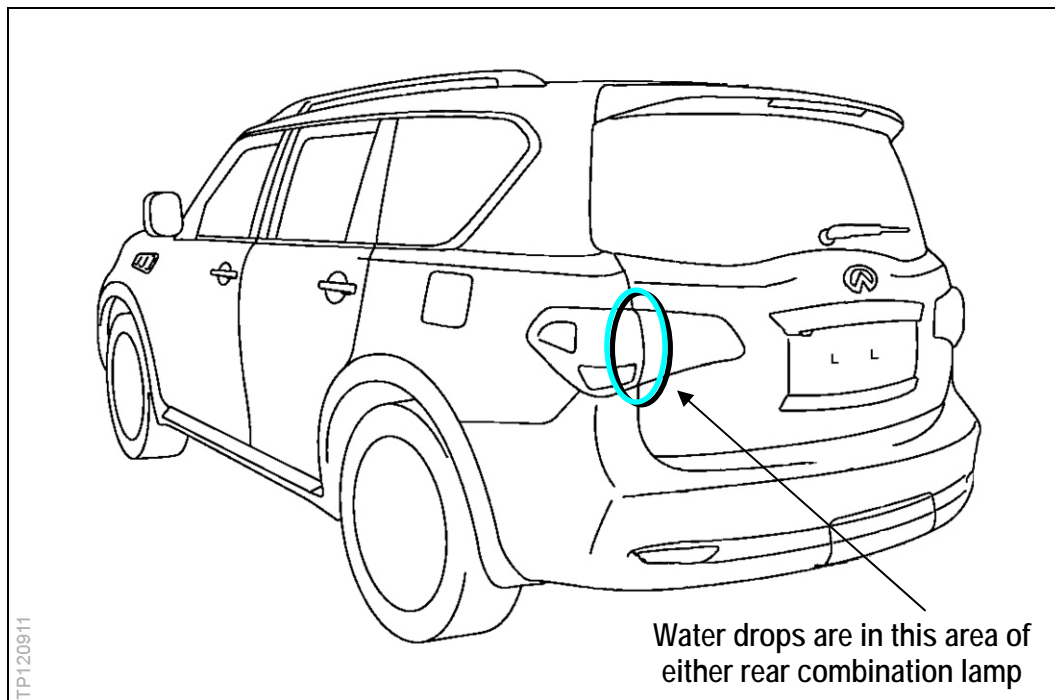
## 2011-2013 QX56; WATER DROPS IN REAR COMBINATION LAMP

**APPLIED VEHICLES:** 2011-2013 QX56 (Z62)

### SERVICE INFORMATION

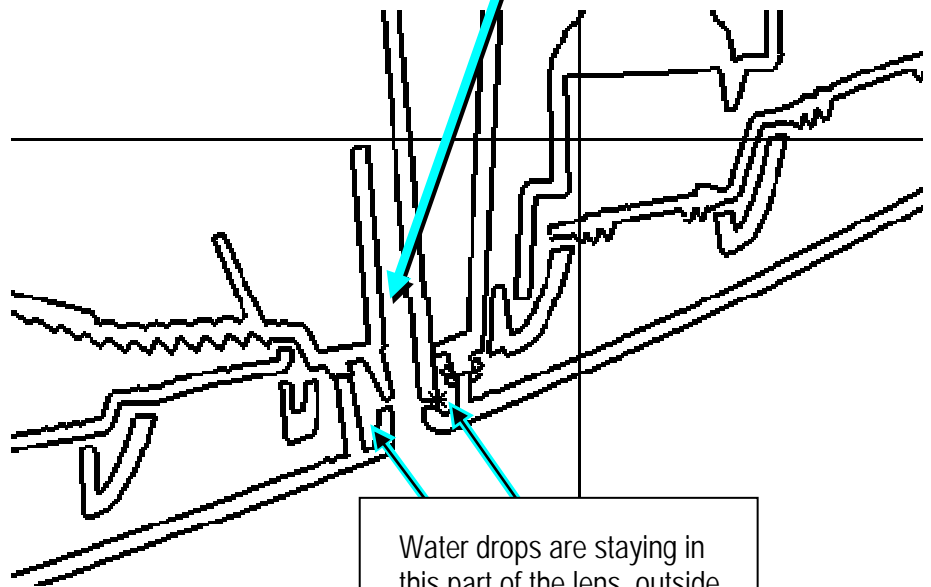
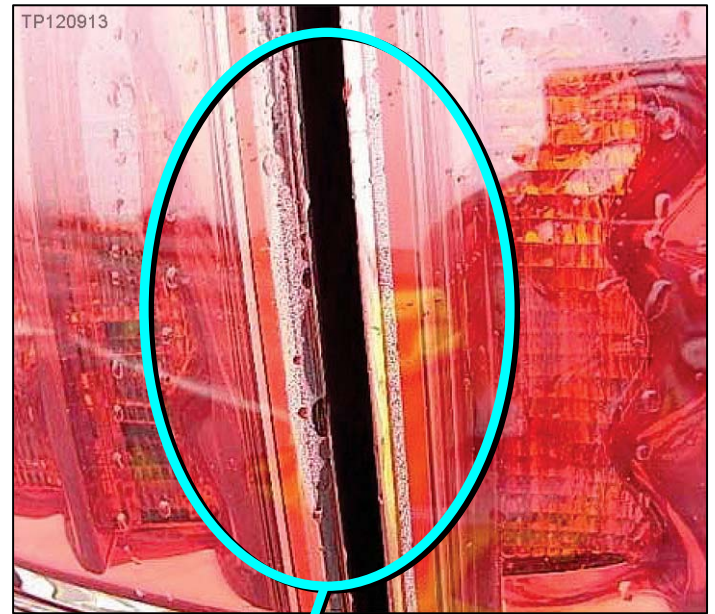
Occasionally, after a rain or a car wash, customers may notice water drops in the overhanging part of the rear combination lamp lens.

- This is a normal condition.
- The water drops should disappear over time when the lamp is in a dry environment.
- Refer to the images on page 2 for examples of a normal water drop condition.
- **Do not** replace any parts for this condition.



Infiniti Bulletins are intended for use by qualified technicians, not 'do-it-yourselfers'. Qualified technicians are properly trained individuals who have the equipment, tools, safety instruction, and know-how to do a job properly and safely. NOTE: If you believe that a described condition may apply to a particular vehicle, DO NOT assume that it does. See your Infiniti dealer to determine if this applies to your vehicle.

Example of normal water drop condition – rear combination lamp



Water drops are staying in this part of the lens, outside of the weld.

