



SERVICE BULLETIN

Classification: EL13-014	Reference: NTB13-053	Date: May 13, 2013
-----------------------------	-------------------------	-----------------------

BEFORE REPLACING A CAN GATEWAY MODULE

APPLIED VEHICLES: 2013 Pathfinder (R52)

IF YOU CONFIRM:

On an applied vehicle with a “CAN Gateway Module” that Multiple CAN system DTCs are present.

- If the CAN Gateway Module is not configured properly, multiple CAN system DTCs can occur, as well as some components on the CAN circuit 2 and ITS-CAN may not function.

ACTION:

Use CONSULT-III plus (C-III plus) to manually over-write the data in the CAN Gateway Module.

- DO NOT perform a “Read Configuration” of the original configuration first.
- See the Service Procedure on Page 2.

CLAIMS INFORMATION

Submit a Primary Part (PP) type claim using the following claims coding:

OPERATION	PFP	OP CODE	SYS	DIA	FRT
Over-write CAN Gateway Module	(1)	RX3RAA	ZE	32	0.3

(1) Refer to the electronic parts catalog (FAST) and use the CAN Gateway Module (284D1-XXXXX) assembly part number as the Primary Part (PFP).

Nissan Bulletins are intended for use by qualified technicians, not 'do-it-yourselfers'. Qualified technicians are properly trained individuals who have the equipment, tools, safety instruction, and know-how to do a job properly and safely. NOTE: If you believe that a described condition may apply to a particular vehicle, DO NOT assume that it does. See your Nissan dealer to determine if this applies to your vehicle.

SERVICE PROCEDURE:

Before considering replacing a CAN Gateway Module for possibly setting DTCs or causing other components to not operate properly:

Perform a write configuration with C-III plus using the **Manual Configuration** mode and then the auto function to “over-write” the vehicle’s configuration to the CAN Gateway Module.

- **DO NOT** perform a “Read Configuration” of the original configuration first.
- C-III plus will write the correct configuration based on the vehicle’s type.

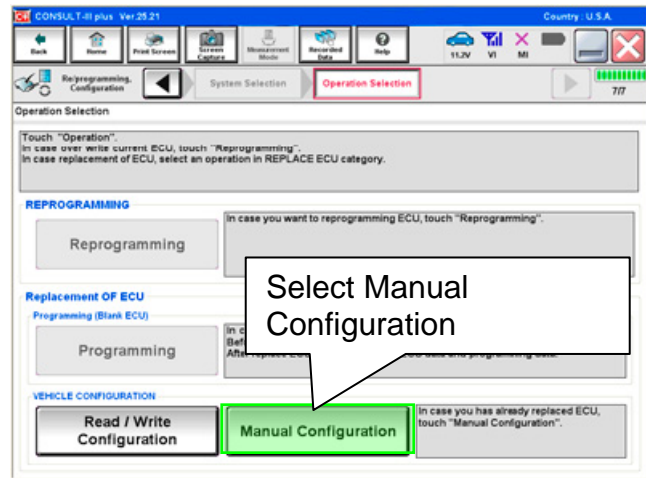


Figure 1

1. Navigate CIII-plus to the reprogramming screen in Figure 1.

2. Select **Manual Configuration**.

- The screen in Figure 2 will then be displayed, but will not display a model or a manually configurable list.

NOTE: Manual configuration data for the CAN Gateway Module cannot be viewed through C-III plus (blank screen) and an incorrect configuration can be unintentionally transferred from the original CAN Gateway Module to the new module.

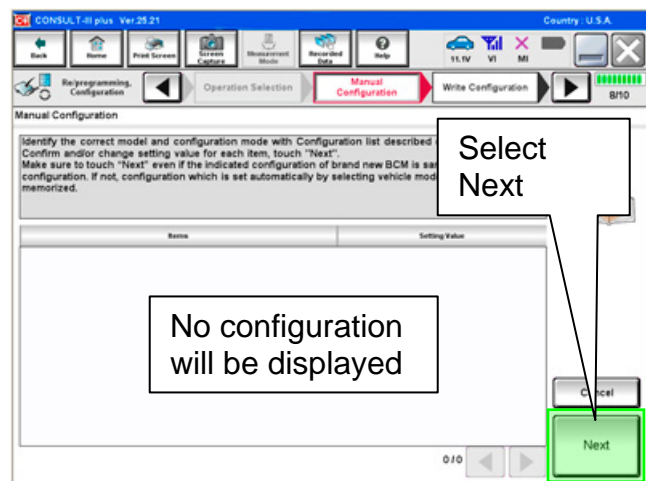


Figure 2

3. Select **Next** (Figure 2).

4. Select **OK**.

- Proceed to step 5 on page 3.

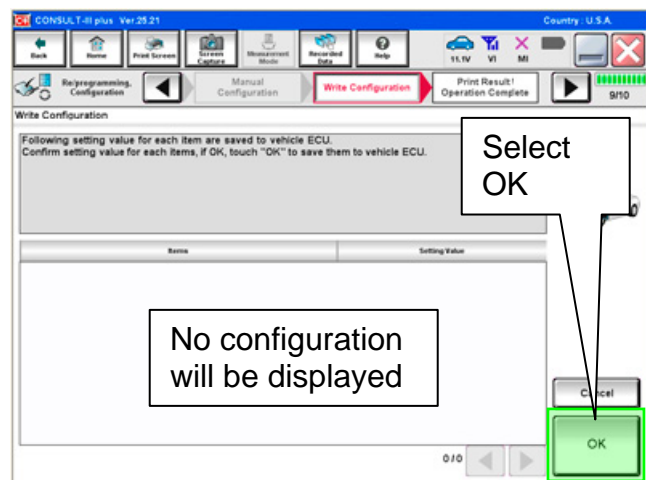


Figure 3

5. After performing an auto over-write:
 - a. Erase DTCs in all systems.
 - b. Cycle the ignition.
 - c. Erase all DTCs a second time and wait for 2 seconds or more, and then confirm that any components that did not respond now function correctly.
6. If no other DTCs are present and all components now function correctly, do not replace the CAN Gateway Module.

If the CAN Gateway Module must be replaced, DO NOT read the original vehicle configuration of the original CAN Gateway Module to C-III plus before replacement.

- After replacing a CAN Gateway Module with a new or used unit, use steps 1 and 2 to over-write the CAN Gateway Module's configuration.

IMPORTANT:

- If you set the incorrect "Read / Write Configuration", DTCs may occur and some systems might not respond or operate.

