

Classification:

EL13-019

Reference:

ITB13-028

Date:

July 26, 2013

AUTO HEADLAMPS ON IN DAYLIGHT WHEN FOG LAMPS TURNED ON

APPLIED VEHICLES: 2013 FX50/FX37 (S51)
2013 G37 Sedan, Coupe and Convertible (V36, CV36, HV36)
2013 M37/M56 and M35 Hybrid (Y51, HY51)
2013 QX56 (Z62)

SERVICE INFORMATION

When the headlamp switch is set to the AUTO position,

AND

the fog lamp switch is turned ON,

... the fog lamps and headlamps are designed to come on, regardless of ambient lighting.

If the customer would prefer that both the headlamps and fog lamps not come on during daylight conditions while in AUTO mode, perform the steps below to disable the fog lamp override feature.

Turning OFF Fog Lamp Override

NOTE: Before starting, make sure your ASIST has been freshly synchronized and all CONSULT-III (C-III) plus upgrades have been installed.

1. Make sure the shift selector is in Park, and the parking brake is set.
2. Connect the CONSULT PC to the vehicle.
3. Turn ON the vehicle.
4. Launch C-III plus.

Infiniti Bulletins are intended for use by qualified technicians, not 'do-it-yourselfers'. Qualified technicians are properly trained individuals who have the equipment, tools, safety instruction, and know-how to do a job properly and safely. NOTE: If you believe that a described condition may apply to a particular vehicle, DO NOT assume that it does. See your Infiniti dealer to determine if this applies to your vehicle.

5. Wait for the plus VI to be recognized / connected.
 - The serial number will display when the plus VI is recognized / connected.
6. Select **Diagnosis (One System)**.

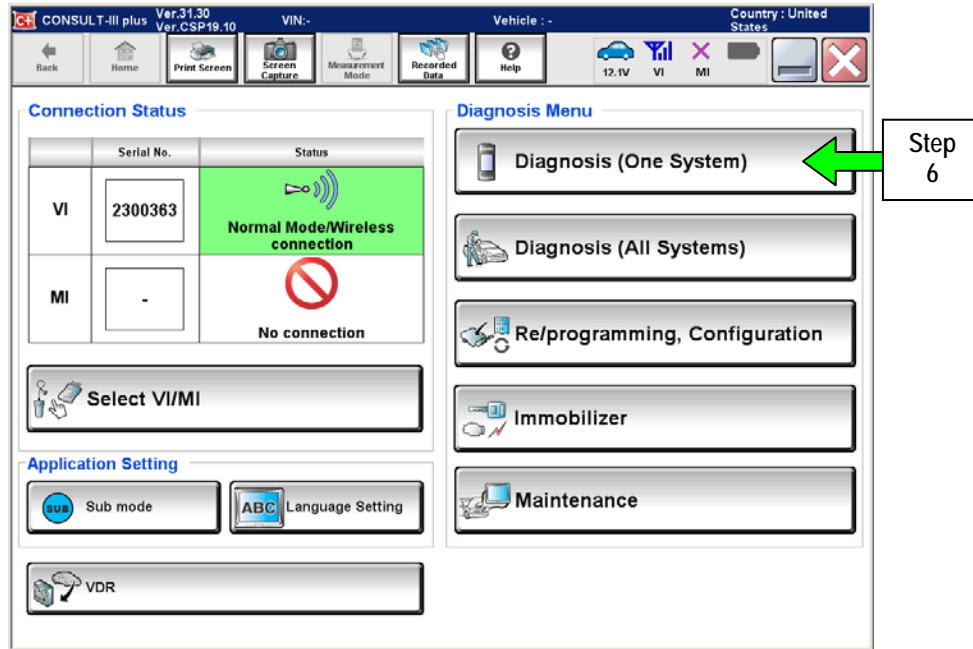


Figure 1

7. Select **BCM**.

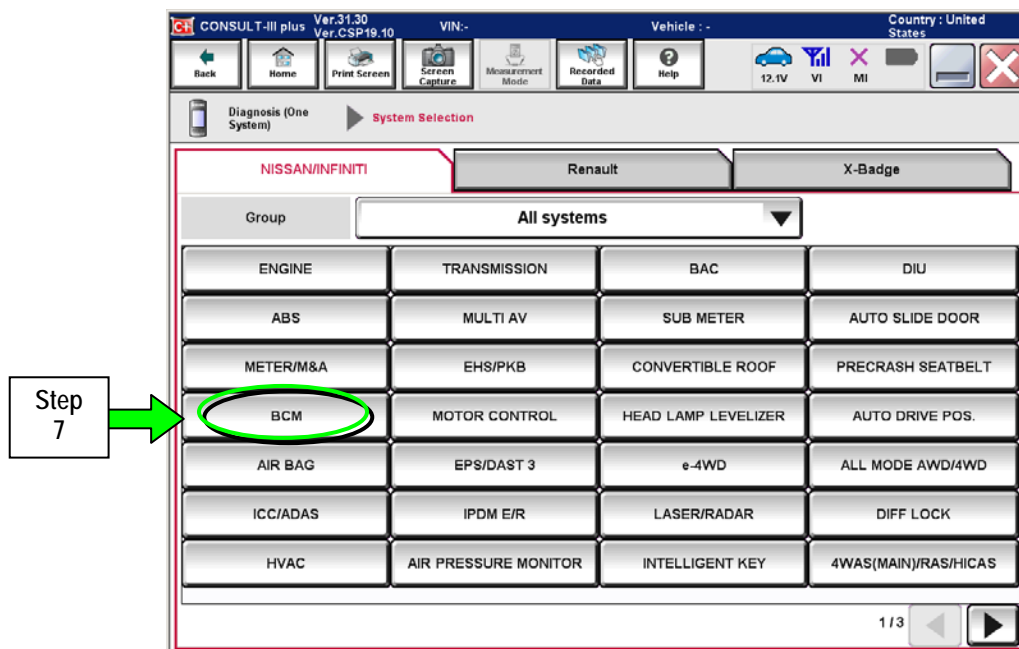


Figure 2

8. Select INT Lamp.

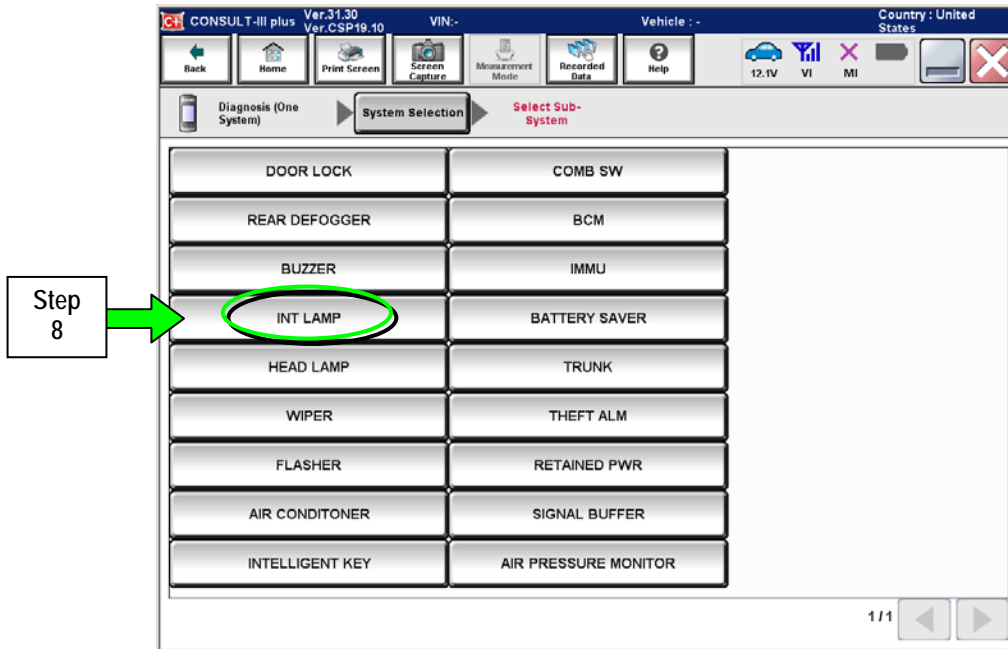


Figure 3

9. Select Work Support.

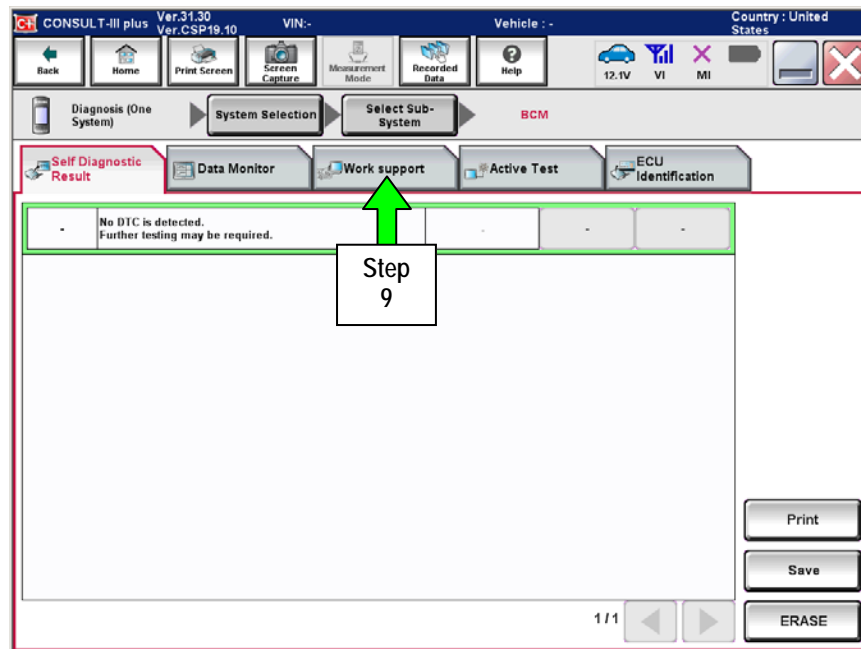


Figure 4

10. Select Fog Lamp Override.

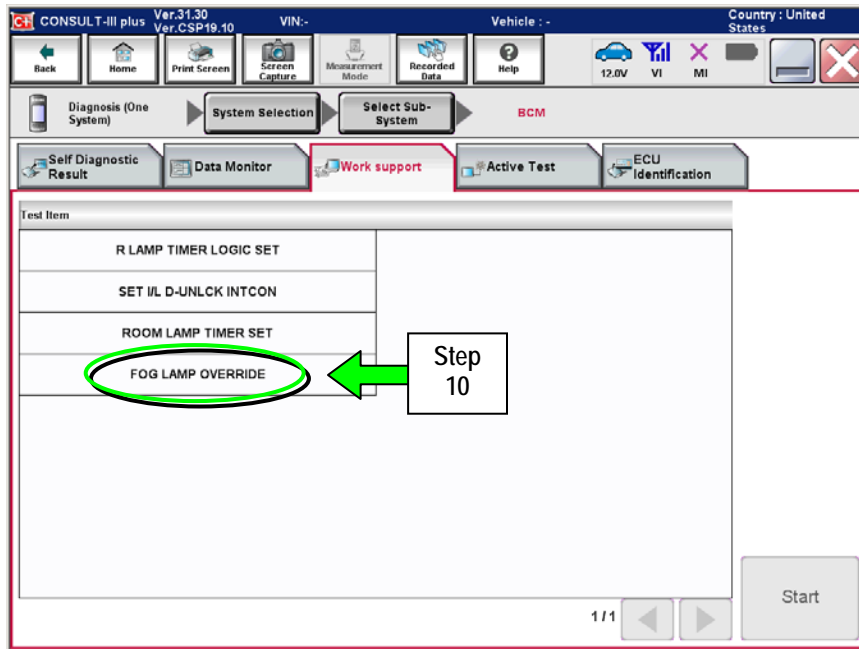


Figure 5

11. Select Start.

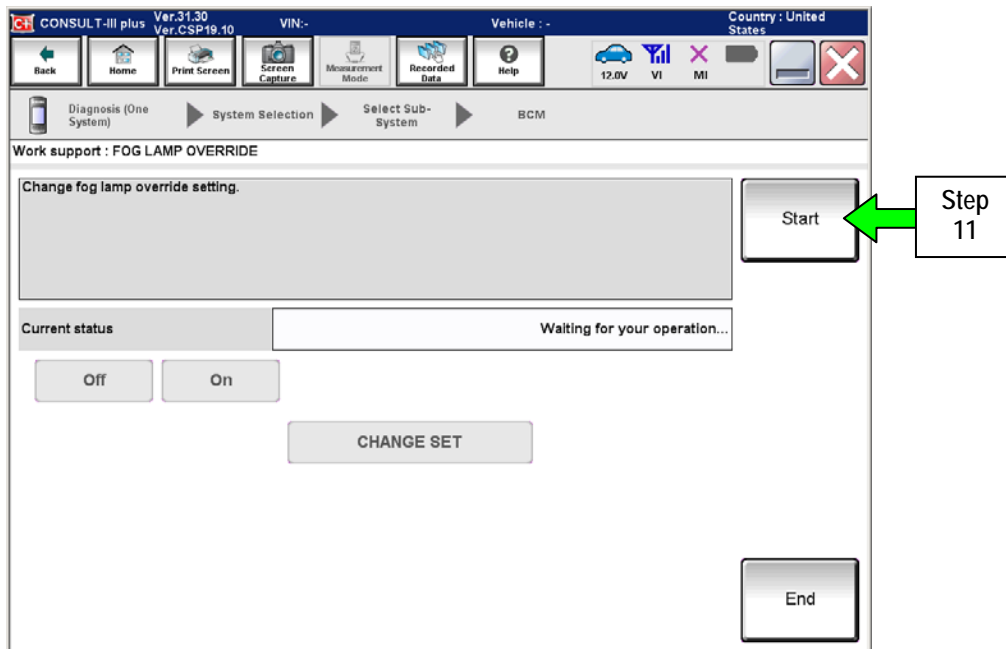


Figure 6

12. Select OFF.

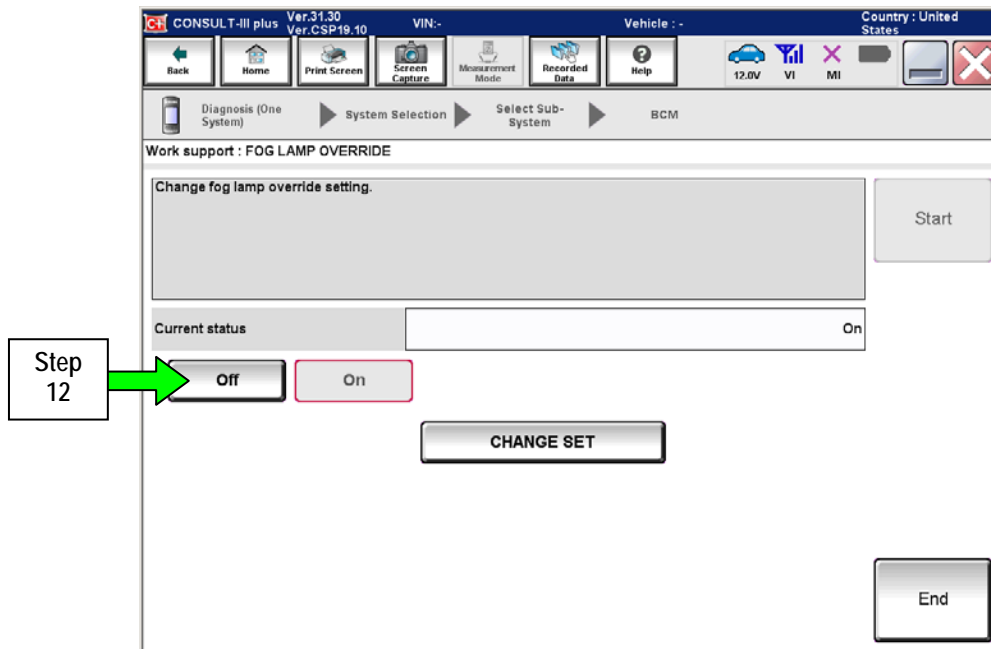


Figure 7

13. Select CHANGE SET.

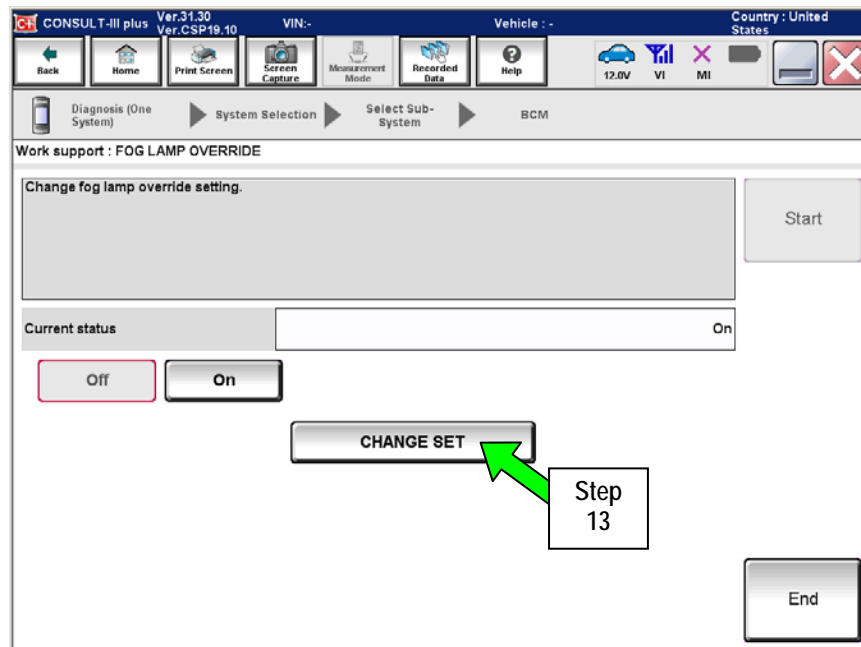


Figure 8

14. Select End.

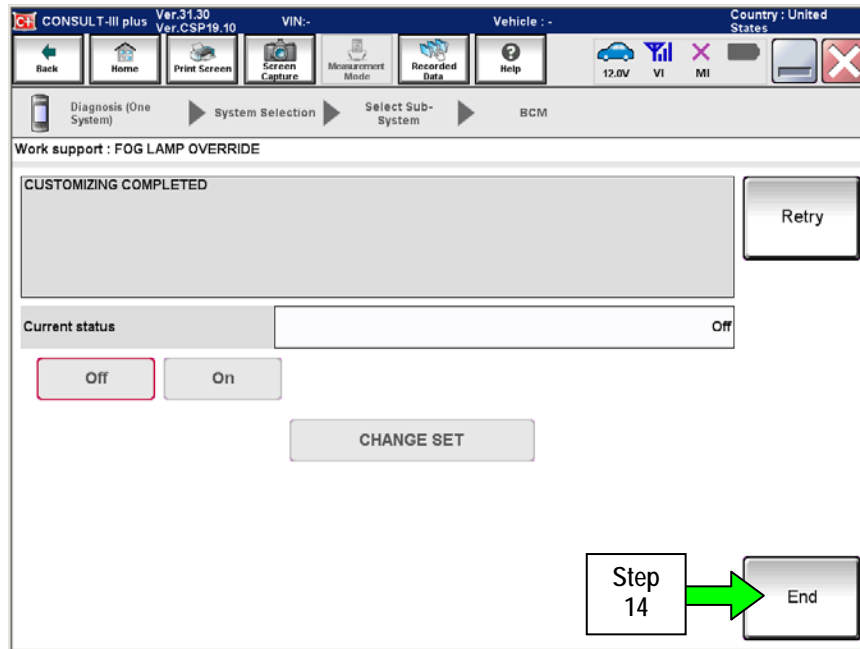


Figure 9

15. Confirm the fog lamp setting has changed.

NOTE: If the ambient lighting is low, move the vehicle outside or apply a light source to the light sensor mounted on the dashboard before proceeding.

- a. Turn the headlamp switch to the AUTO position (if not already set).
- b. Turn the fog lamp switch to the ON position.
- c. Confirm the headlamps do not come on.