



SERVICE BULLETIN

Classification:

EC13-017a

Reference:

NTB13-108a

Date:

February 12, 2014

NISSAN; MIL ON WITH DTC P0139 AND/OR P0159 STORED

<p>This bulletin has been amended. The Title and APPLIED VEHICLES have been revised. Table A in the SERVICE PROCEDURE has been updated. Please discard all previous versions.</p>

APPLIED VEHICLES: 2012 - 2014 370Z (Z34)
2012 - 2014 370Z Roadster (Z34)
2013 - 2014 Frontier (D40) with VQ40DE (6-cyl) engine ONLY
2013 - 2014 Xterra (N50)

IF YOU CONFIRM:

The MIL is ON and one or both of the following DTCs are found stored in the ECM:

- P0139 (heated oxygen sensor 2 (B1) circuit slow response)
- P0159 (heated oxygen sensor 2 (B2) circuit slow response)

ACTION:

1. Confirm this bulletin applies.
 - Compare the vehicle's current ECM part number to those listed in **Table A** (see page 5).
2. If the ECM part number does not match one listed in **Table A**, this bulletin does not apply. Go back to ASIST for further diagnostic and repair information.
3. If this bulletin applies, reprogram the ECM.

IMPORTANT: The purpose of **ACTION** (above) is to give you a quick idea of the work you will be performing. You **MUST** closely follow the entire **SERVICE PROCEDURE** as it contains information that is essential to successfully completing this repair.

<p>Nissan Bulletins are intended for use by qualified technicians, not 'do-it-yourselfers'. Qualified technicians are properly trained individuals who have the equipment, tools, safety instruction, and know-how to do a job properly and safely. NOTE: If you believe that a described condition may apply to a particular vehicle, DO NOT assume that it does. See your Nissan dealer to determine if this applies to your vehicle.</p>

SERVICE PROCEDURE

- Most instructions for reprogramming with CONSULT-III plus (C-III plus) are displayed on the CONSULT PC screen.
- If you are not familiar with the reprogramming procedure, click here. This will link you to the "CONSULT- III plus (C-III plus) Reprogramming" general procedure.

Preparation for Reprogramming

- Take the vehicle for a 10 minute drive in order to meet the following Idle Air Volume Learn (IAVL) conditions:
 - Engine coolant temperature: 70 -100°C (158 -212°F)
 - Battery voltage: More than 12.9V (At idle)
 - Transmission: Warmed up



Figure A

NOTE:

- After ECM reprogramming is complete, you will be required to perform Throttle Valve Closed Position, Idle Air Volume Learn (IAVL), and Accelerator Closed Position.
- The above conditions are required for the IAVL to complete.

CAUTION:

- Connect the GR8 to the vehicle battery. The vehicle battery voltage must stay between 12.0V and 15.5V during reprogramming, or the ECM may be damaged.
- Be sure to turn OFF all vehicle electrical loads. If a vehicle electrical load remains ON, the ECM may be damaged.
- Be sure to connect the AC Adapter. If the CONSULT PC battery voltage drops during reprogramming, the process will be interrupted and the ECM may be damaged.
- Turn off all external Bluetooth® devices (e.g., cell phones, printers, etc.) within range of the CONSULT PC and the VI. If Bluetooth® signal waves are within range of the CONSULT PC during reprogramming, reprogramming may be interrupted and the ECM may be damaged.

1. Connect the CONSULT PC to the vehicle to begin the reprogramming procedure.
2. Start C-III plus.
3. Wait for the plus VI to be recognized.
 - The **Serial No.** will display when the plus VI is recognized.
4. Select **Re/programming, Configuration**.

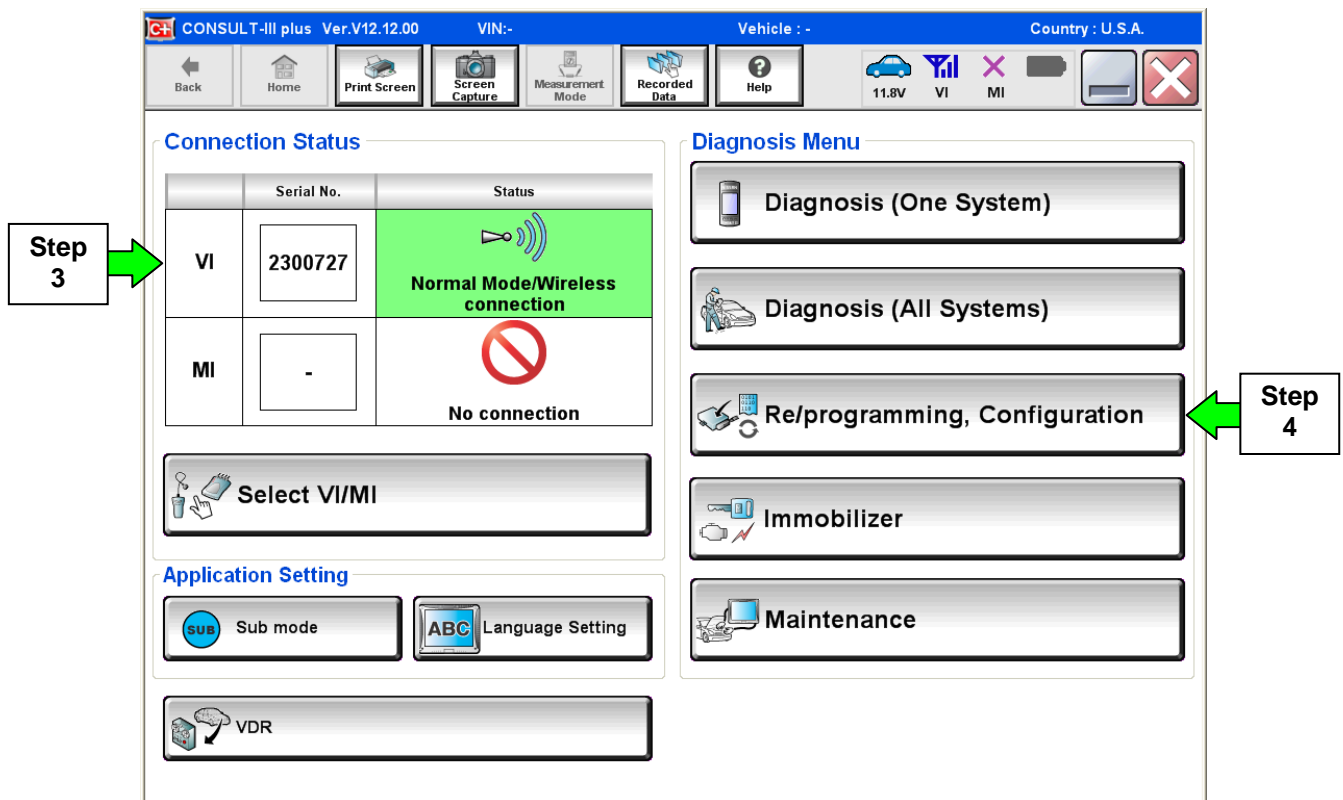


Figure 1

5. Follow the C-III plus on-screen instructions and navigate to the screen shown in Figure 2 on the **next page**.

6. When you get to the screen shown in Figure 2, confirm this bulletin applies as follows:

A. Find the ECM **Part Number** and write it on the repair order.

NOTE: This is the current ECM Part Number (P/N).

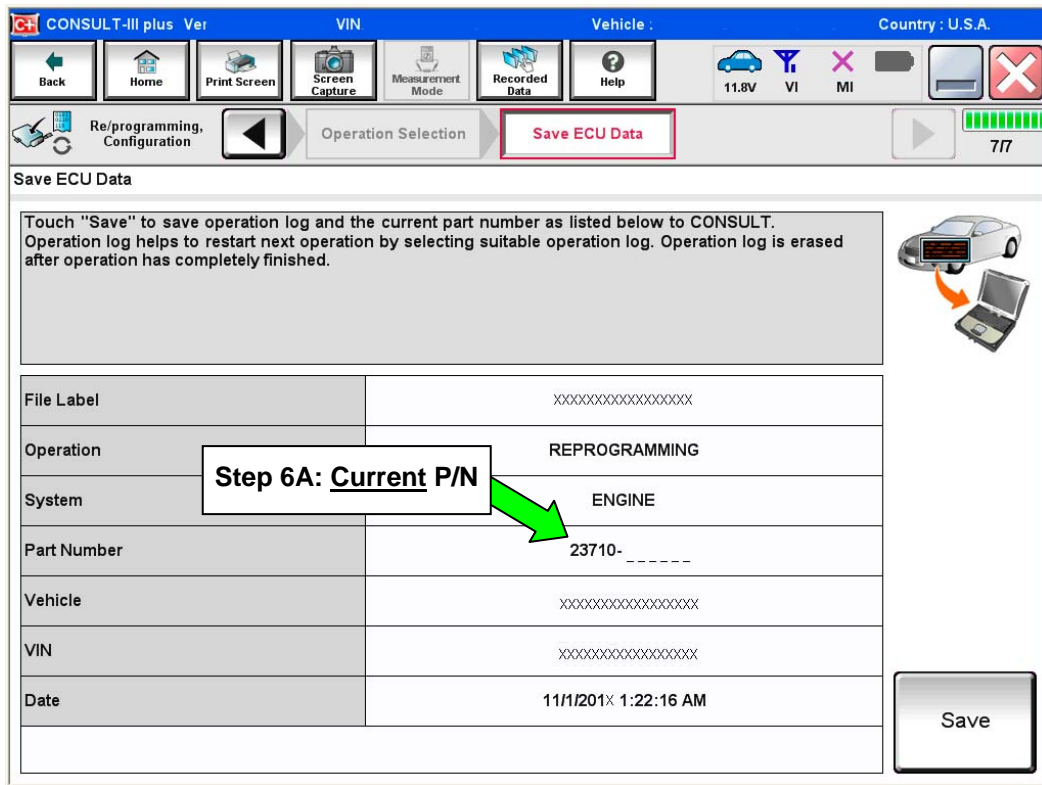


Figure 2

B. Compare the P/N you wrote down to the numbers in the **Current ECM Part Number** column in **Table A** on the next page.

- If there is a match, this bulletin applies. Continue with the reprogramming procedure.
- If there is not a match, this bulletin does not apply. Return to ASIST for further diagnostic and repair information.

Table A

Model	Current ECM Part Number: 23710 -
2014 370Z and 370Z Roadster	1A39E
	3GM0A, 3GM1A, 3GM2A, 3GM3A
2013 370Z and 370Z Roadster	1A35C, 1A39D
	3GY0A, 3GY1A, 3GY2A, 3GY3A
	3GY0B, 3GY1B, 3GY2B, 3GY3B
2012 370Z and 370Z Roadster	1A36C, 1A39A
	1EH0A, 1EH1A, 1EH0B, 1EH1B
	1TH0A, 1TH1A, 1TH0B, 1TH1B
2014 Frontier and Xterra	9CJ0A
	9CJ1A
	9CJ2A
	9CJ3A
2013 Frontier and Xterra	9CF0A, 9CF0B
	9CF2A, 9CF2B
	9CF4A, 9CF4B
2013 Frontier	9BF0A, 9BF0B
	9BF2A, 9BF2B
	9BF4A, 9BF4B
	9BF6A, 9BF6B
	9BF8A, 9BF8B

7. Follow the on-screen instructions to navigate C-III plus and reprogram the ECM.

NOTES:

- In some cases, more than one new P/N for reprogramming is available.
 - In this case, the screen in Figure 3 displays.
 - Select and use the reprogramming option that **does not** have the message “Caution! Use ONLY with NTBXX-XXX”.
- If you get this screen and it is blank (no reprogramming listed), it means there is no reprogramming available for this vehicle.

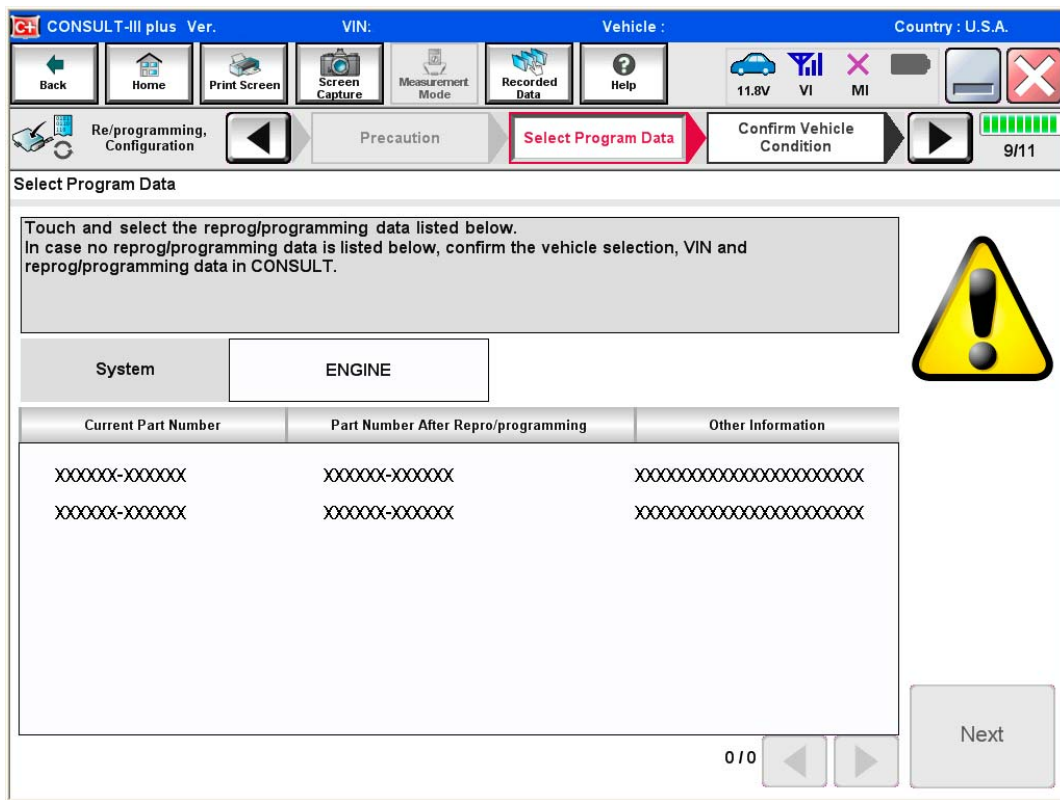


Figure 3

8. When the screen in Figure 4 displays, reprogramming is complete.

NOTE: If the screen in Figure 4 does not display (reprogramming does not complete), refer to the information on page 8.

9. Disconnect the battery charger from the vehicle.

10. Select **Next**.

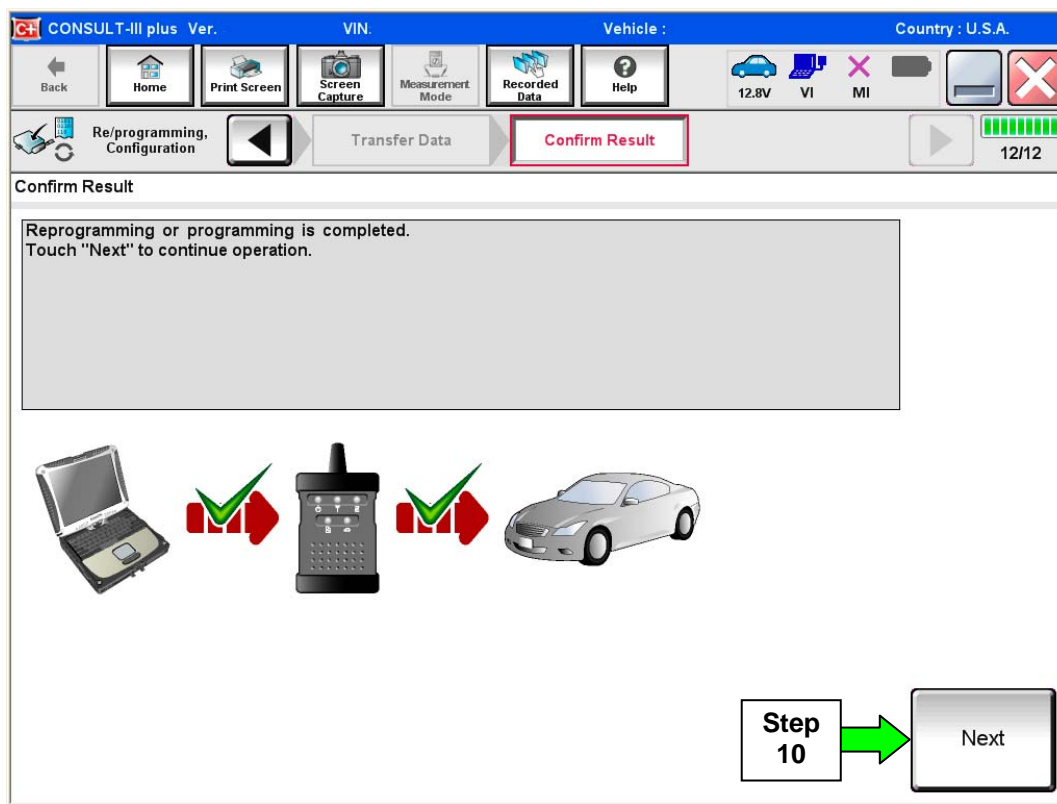


Figure 4

NOTES:

- In the next steps (page 9), you will perform Throttle Valve Closed Position, Idle Air Volume Learn, Accelerator Closed Position, and DTC erase.
- These operations are required before C-III plus will provide the final reprogramming confirmation report.

ECM recovery:

Do not disconnect plus VI or shut down C-III plus if reprogramming does not complete.

If reprogramming does not complete and the “!” icon displays as shown in Figure 5:

- Check battery voltage (12.0 - 15.5 V).
- Ignition is ON, engine OFF.
- External Bluetooth® devices are OFF.
- All electrical loads are OFF.
- **Select retry and follow the on screen instructions.**
- “Retry” may not go through on first attempt and can be selected more than once.

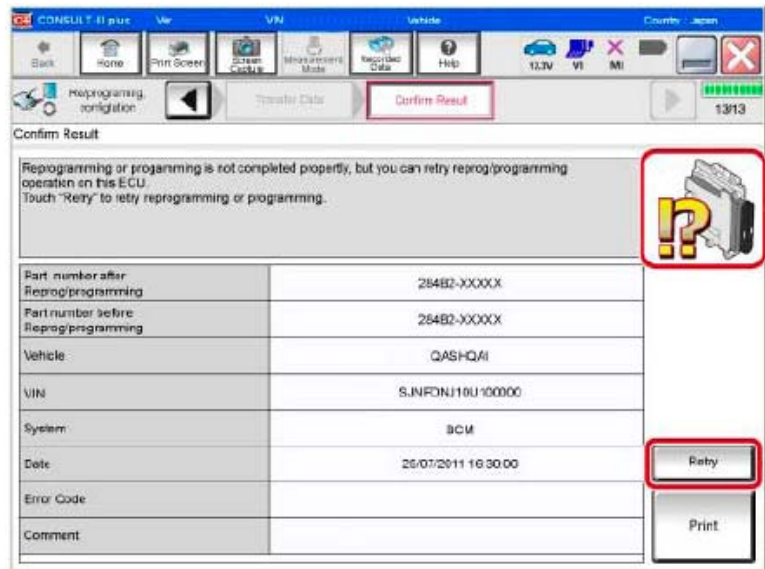


Figure 5

If reprogramming does not complete and the “X” icon displays as shown in Figure 6:

- Check battery voltage (12.0 - 15.5 V).
- CONSULT A/C adapter is plugged in.
- Ignition is ON, engine OFF.
- Transmission is in Park.
- All C-III plus / VI cables are securely connected.
- All C-III plus updates are installed.
- **Select Home, and restart the reprogram procedure from the beginning.**

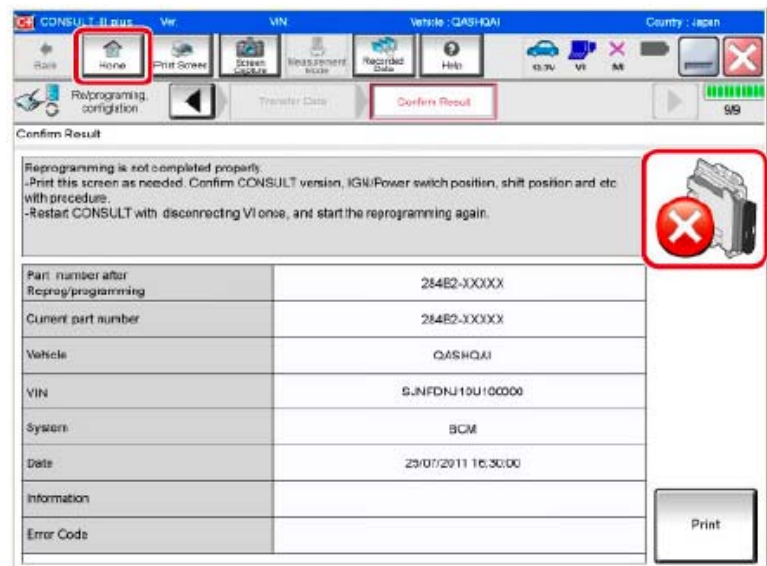


Figure 6

11. Follow the on-screen instructions to perform the following:

- **Throttle Valve Closed Position**
- **Idle Air Volume Learn (IAVL)**

NOTE:

- **Listed below are the conditions required for IAVL to complete.**
- **If IAVL does not complete within a few minutes, a condition may be out of range.**
 - Engine coolant temperature: 70 -100° C (158 -212°F)
 - Battery voltage: More than 12.9V (At idle)
 - Selector lever: P or N
 - Electric load switch: OFF (Air conditioner, headlamp, rear window defogger)
 - Steering wheel: Neutral (Straight-ahead position)
 - Vehicle speed: Stopped
 - Transmission: Warmed up (ATF TEMP SE less than 0.9V)

- **Accelerator Pedal Close Position Learning**
- **Erase DTCs**

Continue to the next page.

12. When the entire reprogramming process is complete, the screen in Figure 7 will display.
13. Verify the before and after part numbers are different.
14. Print a copy of this screen (Figure 7) and attach it to the repair order for warranty documentation.
15. Select **Confirm**.

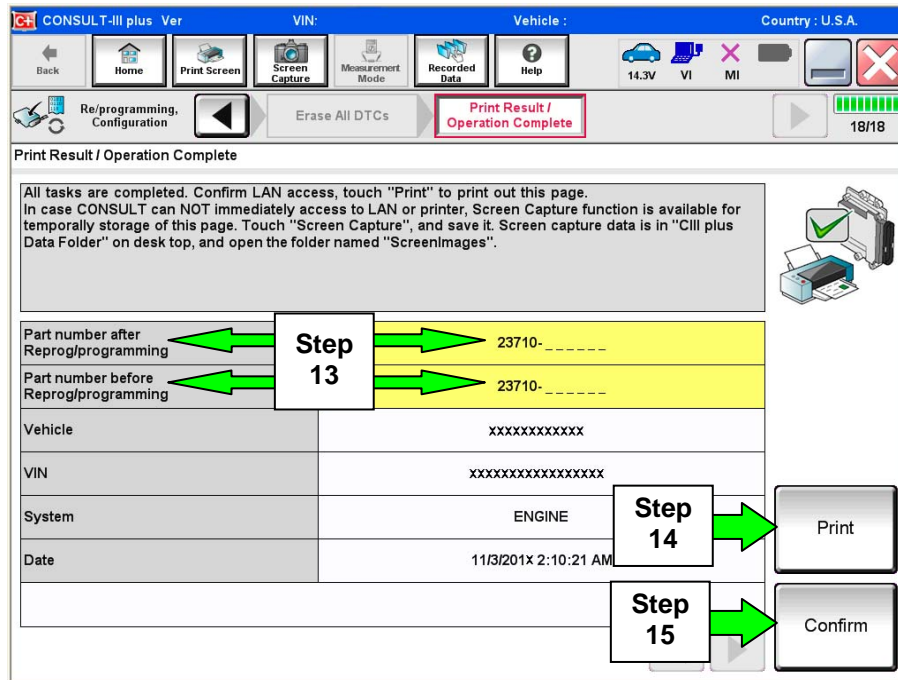


Figure 7

16. Close C-III plus.
17. Turn the ignition OFF.
18. Disconnect the plus VI from the vehicle.
19. Test drive the vehicle and make sure it operates correctly and the MIL is OFF.
 - If the MIL comes ON, go back to ASIST for further diagnostic information.
 - Diagnosis and repairs beyond ECM reprogramming are not covered by this bulletin.

CLAIMS INFORMATION

Submit a Primary Part (PP) line claim using the following claims coding:

DESCRIPTION	PFP	OP CODE	SYM	DIA	FRT
Reprogram Engine Control Module	(1)	DE97AA	ZE	32	(2) (3)

- (1) Refer to the electronic parts catalog (FAST) and use the ECM assembly part number as the Primary Failed Part (PFP).
- (2) Reference the current Nissan Warranty Flat Rate Manual and use the indicated FRT.
- (3) FRT allows adequate time to access DTC codes and reprogram ECM. No other diagnostic procedures subsequently required. Do NOT claim any Diagnostic Op Codes with this claim.