



# SERVICE BULLETIN

Classification: FE14-001	Reference: NTB14-018	Date: March 20, 2014
-----------------------------	-------------------------	-------------------------

## 2008 – 2014 ROGUE; EXHAUST CENTER TUBE HEAT SHIELD RATTLE

**APPLIED VEHICLES:** 2008 – 2013 Rogue (S35)  
2014 Rogue Select (S35)

### IF YOU CONFIRM

A rattle coming from the exhaust center tube heat shield,

and

The heat shield spot weld is detached at the location shown in Figure 1.

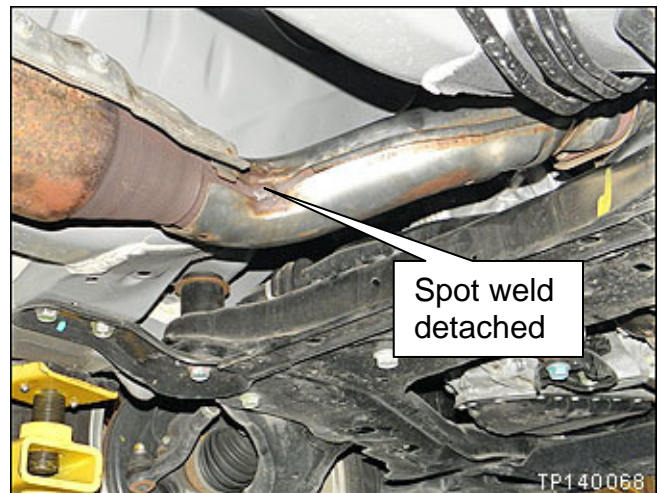


Figure 1

### ACTION

Install a band clamp around the heat shield and over the detached spot weld.

**IMPORTANT:** The purpose of ACTION (above) is to give you a quick idea of the work you will be performing. You **MUST** closely follow the entire SERVICE PROCEDURE as it contains information that is essential to successfully completing this repair.

Nissan Bulletins are intended for use by qualified technicians, not 'do-it-yourselfers'. Qualified technicians are properly trained individuals who have the equipment, tools, safety instruction, and know-how to do a job properly and safely. NOTE: If you believe that a described condition may apply to a particular vehicle, DO NOT assume that it does. See your Nissan dealer to determine if this applies to your vehicle.

## SERVICE PROCEDURE

1. **WARNING:** Wait for the exhaust system to cool before touching exhaust system components. Hot exhaust components can cause severe burns.



Figure 2

2. Install a band clamp around the heat shield and over the detached spot weld as shown in Figure 3.
  - Make sure the adjustment screw is over the detached spot weld.
  - Make sure the band clamp is tightened to 4.0-5.5 N•m (0.4-0.56 kg-m, **35-49 in-lb**).
  - Cut off excess band (leave approximately 5 mm [1/4 inch] of excess band).

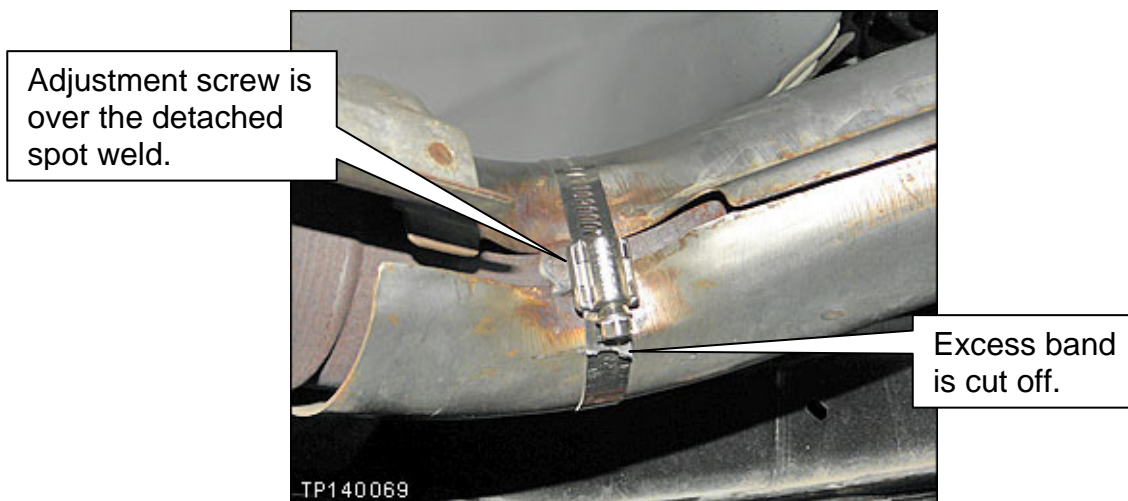


Figure 3

**PARTS INFORMATION**

<b>DESCRIPTION</b>	<b>PART NUMBER</b>	<b>QUANTITY</b>
Band Clamp	20560-CZ30A	1

**CLAIMS INFORMATION**

Submit a Primary Part (PP) type line claim using the following claims coding:

<b>DESCRIPTION</b>	<b>PFP</b>	<b>OP CODE</b>	<b>SYM</b>	<b>DIA</b>	<b>FRT</b>
Front Exhaust Tube Repair (Install Band Clamp)	(1)	FX45AA	ZL	01	0.3 hrs.

(1) Refer to the electronic parts catalog (FAST or equivalent) and use the "Tube Assy-Exhaust Connect, Front" (20018-xxxxx) part number as the Primary Failed Part (PFP).

