

Classification:  
EL14-052

Reference:  
ITB14-057

COPYRIGHT© NISSAN NORTH AMERICA, INC.  
Date:  
December 1, 2014

## 2014-2015 Q50; CONFIGURING CAN GATEWAY

**APPLIED VEHICLE:** 2014 – 2015 Q50 (V37)  
2014 – 2015 Q50 Hybrid (V37)

### SERVICE INFORMATION

After replacement of a CAN Gateway Module, the new module must be configured with the correct part number to complete the repair.

The part number is listed by CONSULT-III plus (C-III plus) when performing a **Manual Configuration** and does not match the part number that is listed on the module's external label.

- Use the part number listed below (and shown in Figure 1) to configure the CAN Gateway Module for all trim levels of the Applied Vehicles.

**284D2-4GB0B**

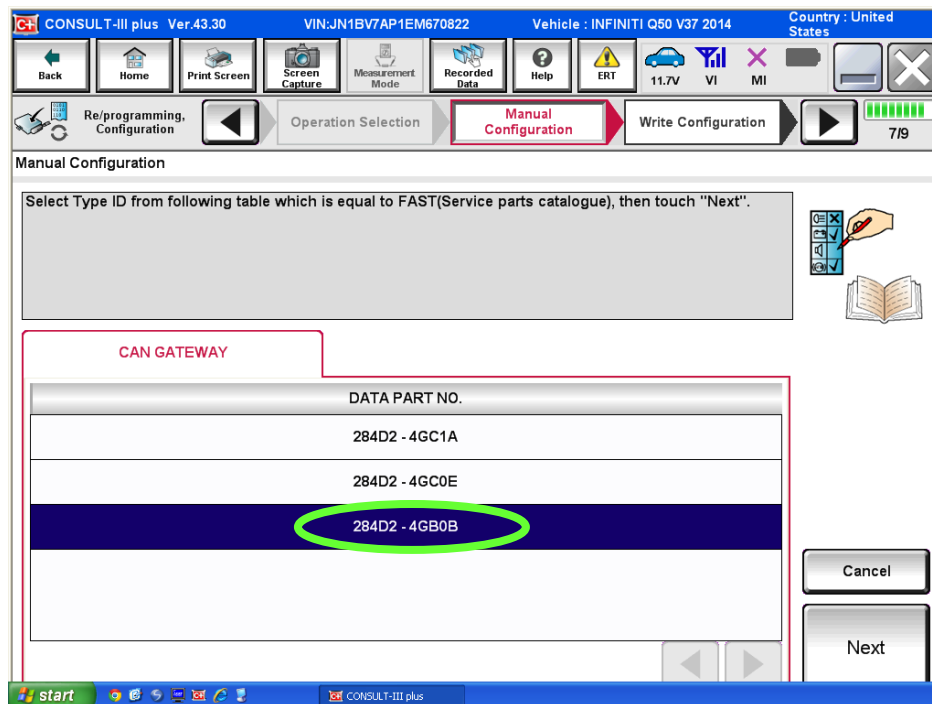


Figure 1

**NOTE:** Refer to the Electronic Service Manual (ESM), section **LAN – LAN System**, for further information.

Infiniti Bulletins are intended for use by qualified technicians, not 'do-it-yourselfers'. Qualified technicians are properly trained individuals who have the equipment, tools, safety instruction, and know-how to do a job properly and safely. NOTE: If you believe that a described condition may apply to a particular vehicle, DO NOT assume that it does. See your Infiniti retailer to determine if this applies to your vehicle.