



SERVICE BULLETIN

Classification:	Reference:	Date:
EC15-007	NTB15-051	June 12, 2015

2015 ALTIMA, PATHFINDER, AND MURANO; MIL ON AND REAR O2 SENSOR RELATED DTC STORED

APPLIED VEHICLES: 2015 Altima (L33) with V6 engine ONLY
2015 Pathfinder (R52)
2015 Murano (Z52)

IF YOU CONFIRM:

Any of the following DTCs are stored in the ECM:

- P0037, P0038, P0057, P0058, P0139, P0159, P0141, P0161, P0137, P0157, P0138, P0158

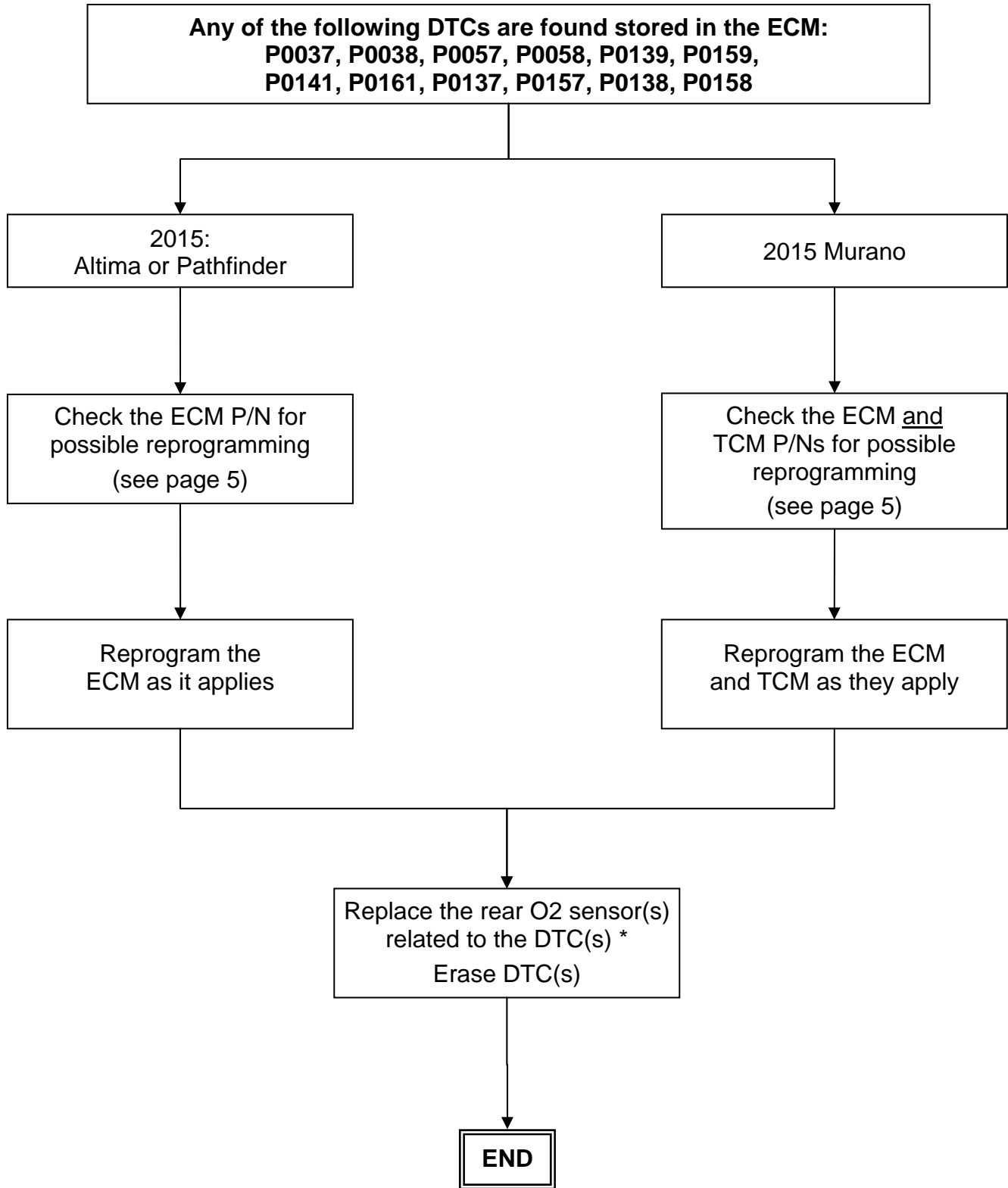
ACTION:

Refer to the **FLOW CHART** on page 2.

IMPORTANT: The purpose of **ACTION** (above) is to give you a quick idea of the work you will be performing. You **MUST** closely follow the entire **SERVICE PROCEDURE** as it contains information that is essential to successfully completing this repair.

Nissan Bulletins are intended for use by qualified technicians, not 'do-it-yourselfers'. Qualified technicians are properly trained individuals who have the equipment, tools, safety instruction, and know-how to do a job properly and safely. **NOTE:** If you believe that a described condition may apply to a particular vehicle, **DO NOT** assume that it does. See your Nissan dealer to determine if this applies to your vehicle.

FLOW CHART



* Replace only the rear O2 sensor that relates to the stored DTC(s) (B1 and/or B2). Do NOT replace both rear O2 sensors if the DTC(s) is for one rear O2 sensor.

SERVICE PROCEDURE

ECM/TCM Reprogramming

- This procedure will require reprogramming of the ECM first, and for some vehicles the TCM second, which means most steps in this procedure may need to be done twice.
- Most instructions for reprogramming with CONSULT-III plus (C-III plus) are displayed on the CONSULT PC screen.
- If you are not familiar with the reprogramming procedure, *click here*. This will link you to the "CONSULT-III plus (C-III plus) Reprogramming" general procedure.

Preparation for Reprogramming

- Take the vehicle for a 10 minute drive in order to meet the following Idle Air Volume Learn (IAVL) conditions:
 - Engine coolant temperature: 70 -100°C (158 - 212°F)
 - Battery voltage: More than 12.9V (At idle)
 - Transmission: Warmed up



Figure A

NOTE:

- After ECM reprogramming is complete, you will be required to perform Throttle Valve Closed Position, Idle Air Volume Learn (IAVL), and Accelerator Closed Position.
- The above conditions are required for the IAVL to complete.

CAUTION:

- Connect the GR8 battery charger to the vehicle battery. The vehicle battery voltage must stay between 12.0V and 15.5V during reprogramming, or the ECM/TCM may be damaged.
- Be sure to turn OFF all vehicle electrical loads. If a vehicle electrical load remains ON, the ECM/TCM may be damaged.
- Be sure to connect the AC Adapter. If the CONSULT PC battery voltage drops during reprogramming, the process will be interrupted and the ECM/TCM may be damaged.
- Turn off all external Bluetooth® devices (e.g., cell phones, printers, etc.) within range of the CONSULT PC and the VI. If Bluetooth® signal waves are within range of the CONSULT PC during reprogramming, reprogramming may be interrupted and the ECM/TCM may be damaged.

1. **Connect the CONSULT PC** to the vehicle to begin the reprogramming procedure.
2. Open ASIST on the CONSULT PC and start C-III plus.
3. Wait for the plus VI to be recognized / connected.
 - The serial number (**Serial No.**) will display when the plus VI is recognized / connected.
4. Select **Re/programming, Configuration**.

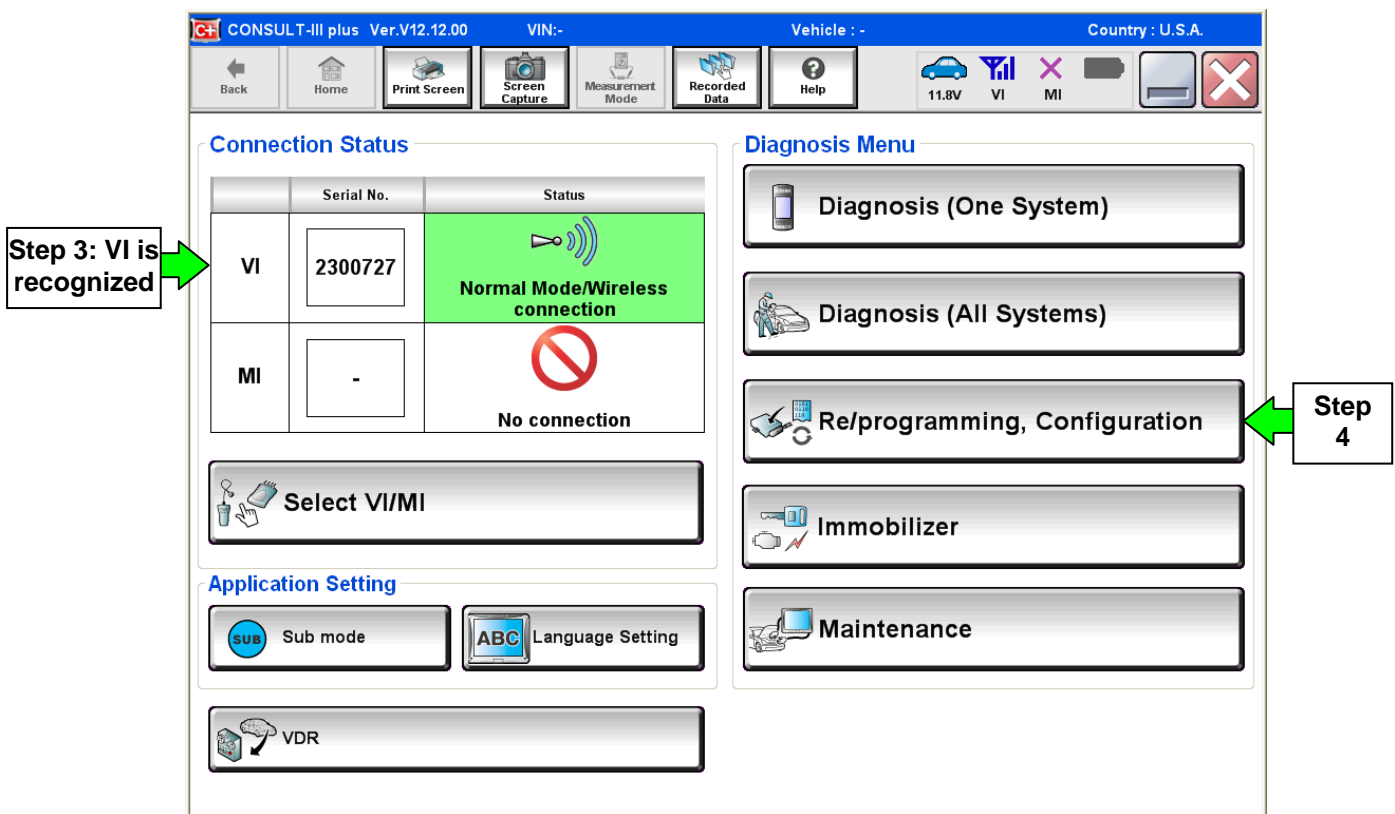


Figure 1

5. Follow the on-screen instructions and navigate C-III plus to the screen shown in Figure 2 on the next page.

6. When you get to the screen shown in Figure 2, confirm this bulletin applies as follows:

A. Find the ECM (or TCM) **Part Number** and write it on the repair order.

NOTE: This is the current ECM or TCM Part Number (P/N).
ECM preprogramming must be performed first.

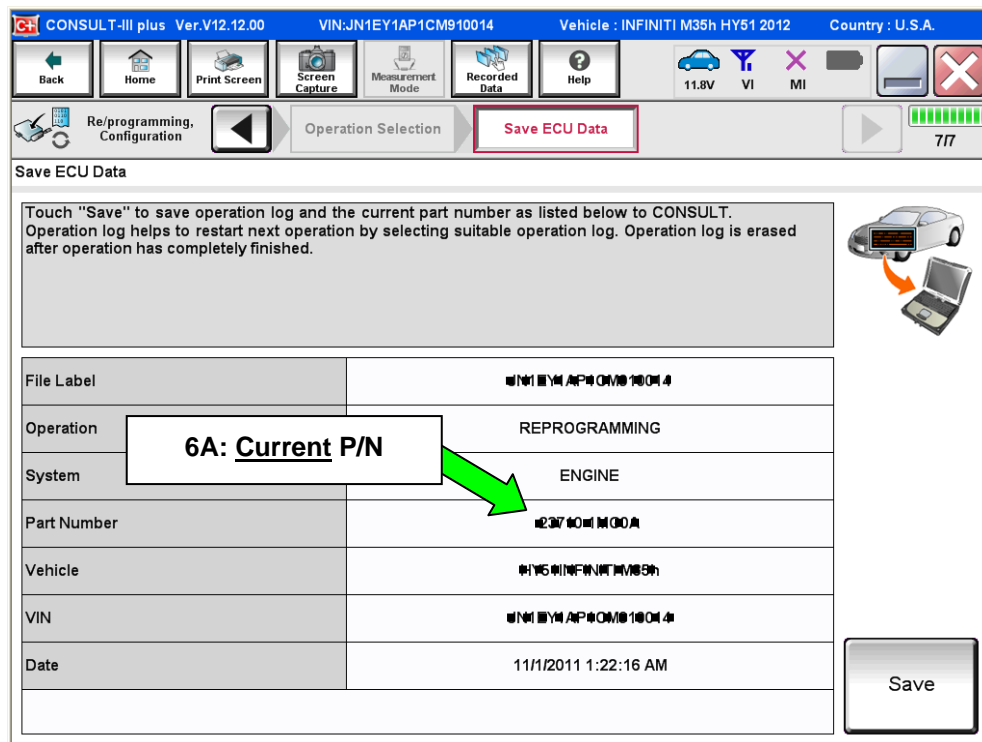


Figure 2

B. Compare the P/N you wrote down to the numbers in the **Current ECM (or TCM) Part Number** column in **Table A** (or **Table B**) on next page.

- If there is a **match**, this bulletin **applies**. Continue with the reprogramming procedure.
- If there is **not a match**, reprogramming **does not apply**. Make sure to check both ECM and TCM (as it applies) for a match.

Table A (ECM)

MODEL	CURRENT <u>ECM</u> PART NUMBER: 23710-
2015 Altima	9HP6A, 9HP6B
	9HP7A, 9HP7B
2015 Pathfinder	9PB0A, 9PB0B
	9PB1A, 9PB1B
2015 Murano	5AA0A, 5AA0B
	5AA3A, 5AA3B
	5AA4A, 5AA4B
	5AA5A, 5AA5B

Table B (TCM)

MODEL	CURRENT <u>TCM</u> PART NUMBER: 31036-
2015 Murano	5AA0A, 5AA0D

- Follow the on-screen instructions to navigate C-III plus and reprogram the ECM (and TCM, if it applies).

NOTE:

- In some cases, more than one new P/N for reprogramming is available.
 - In this case, the screen in Figure 3 displays.
 - Select and use the reprogramming option that **does not** have the message “Caution! Use ONLY with NTBXX-XXX”.
- If you get this screen and it is blank (no reprogramming listed), it means there is no reprogramming available for this vehicle.

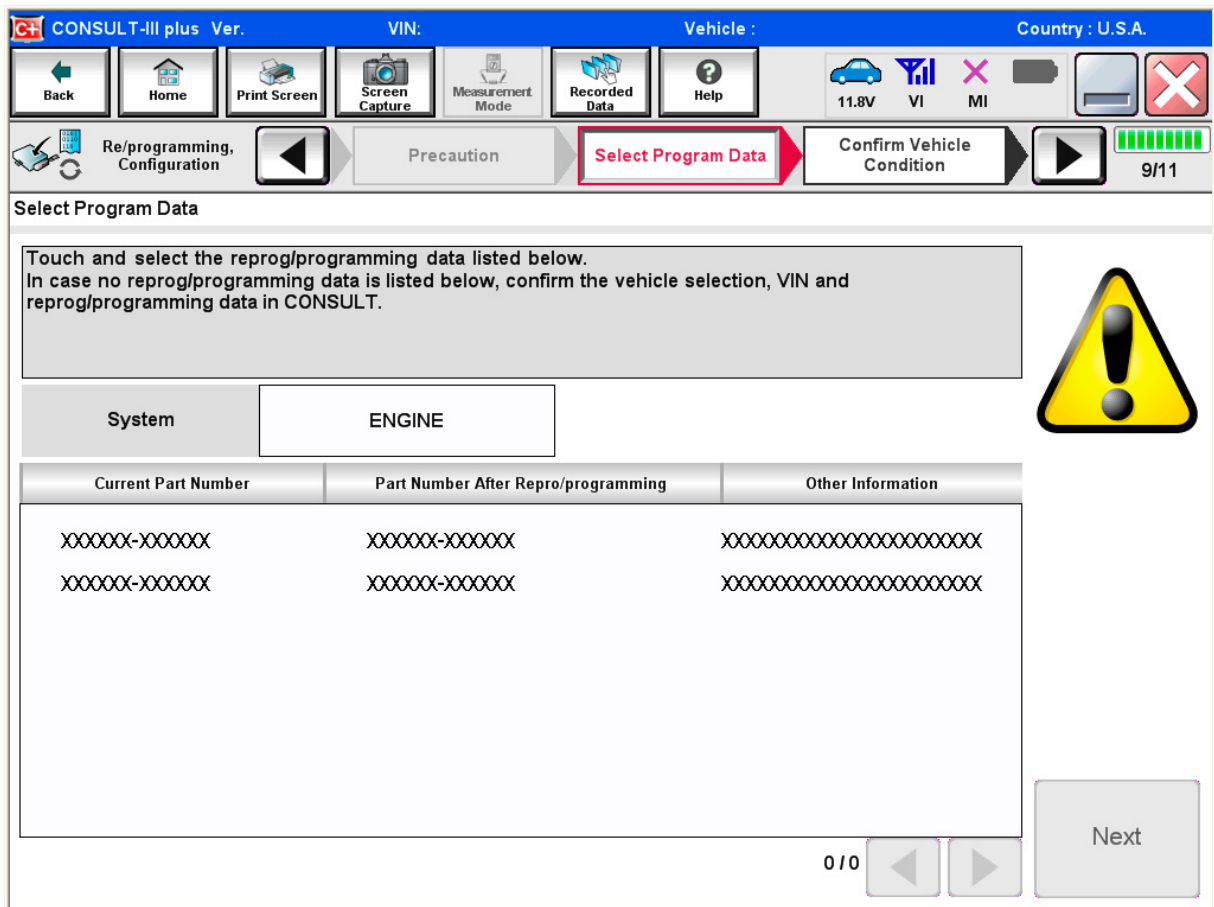


Figure 3

8. When the screen in Figure 4 displays, reprogramming is complete.

NOTE: If the screen in Figure 4 does not display (reprogramming does not complete), refer to the information on the next page.

9. Disconnect the battery charger from the vehicle.

10. Select **Next**.

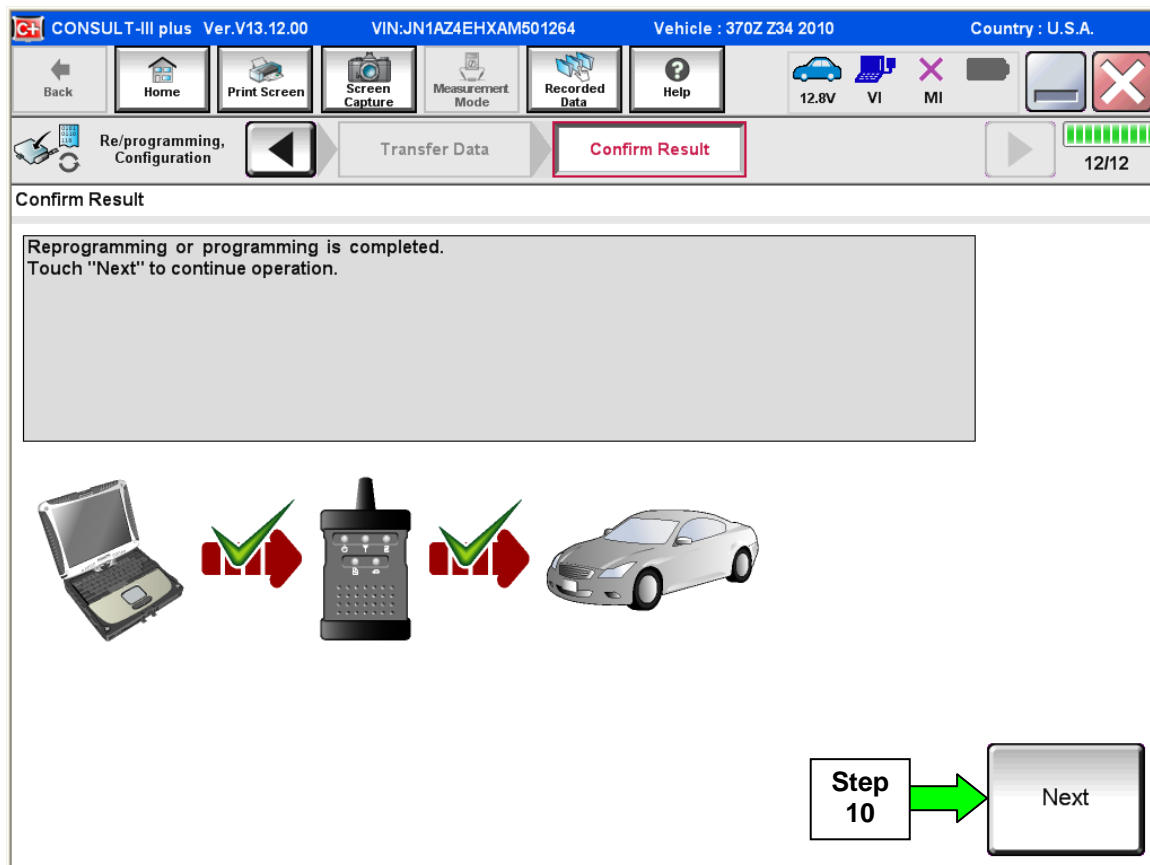


Figure 4

NOTE:

- In the next steps (page 9):
 1. For ECM reprogramming you will perform Throttle Valve Closed Position, Idle Air Volume Learn, Accelerator Closed Position, and DTC erase.
 2. For TCM reprogramming, only DTC erase is needed.
- These operations are required before C-III plus will provide the final reprogramming confirmation report.

ECM/TCM recovery:

Do not disconnect plus VI or shut down Consult III plus if reprogramming does not complete.

If reprogramming does not complete and the “!?” icon displays as shown in Figure 5:

- Check battery voltage (12.0–15.5 V).
- Ignition is ON, engine OFF.
- External Bluetooth® devices are OFF.
- All electrical loads are OFF.
- **Select retry and follow the on screen instructions.**
- “Retry” may not go through on first attempt and can be selected more than once.

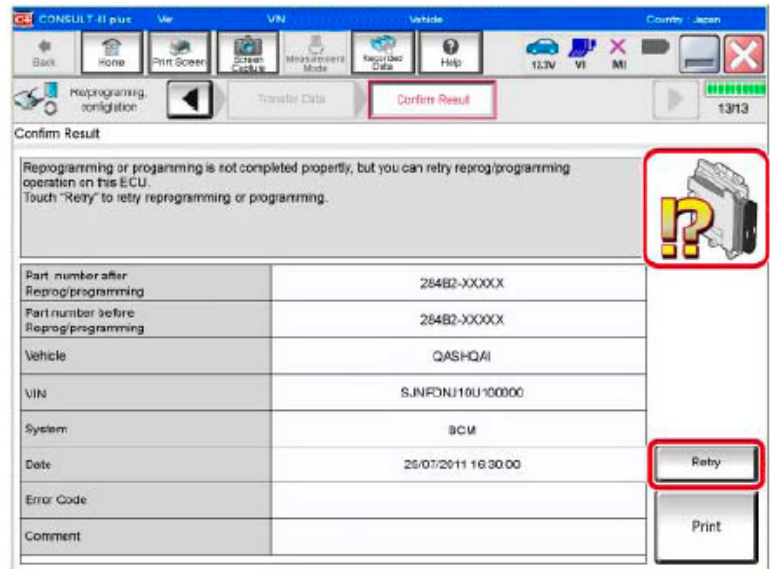


Figure 5

If reprogramming does not complete and the “X” icon displays as shown in Figure 6:

- Check battery voltage (12.0 – 15.5 V).
- CONSULT A/C adapter is plugged in.
- Ignition is ON, engine OFF.
- Transmission is in Park.
- All C-III plus / plus VI cables are securely connected.
- All C-III plus updates are installed.
- **Select Home, and restart the reprogram procedure from the beginning.**

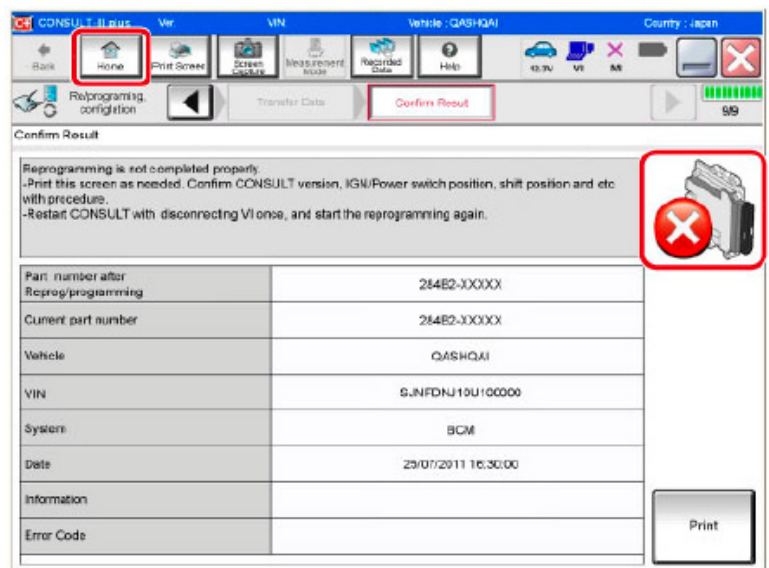


Figure 6

11. Follow the on-screen instructions to perform the following:

NOTE: For TCM reprogramming, only erase DTCs as needed.

- **Throttle Valve Closed Position.**

- **Idle Air Volume Learn (IAVL).**

NOTE:

- **Listed below are the conditions required for IAVL to complete.**

- **If IAVL does not complete within a few minutes, a condition may be out of range.**
 - Engine coolant temperature: 70 -100° C (158 -212°F).
 - Battery voltage: More than 12.9V (At idle).
 - Selector lever: P or N.
 - Electric load switch: OFF (Air conditioner, headlamp, and rear window defogger).
 - Steering wheel: Neutral (Straight-ahead position).
 - Vehicle speed: Stopped.
 - Transmission: Warmed up (ATF TEMP SE less than 0.9V).

- **Accelerator Pedal Close Position Learning.**

- **Erase DTCs.**

Continue to the next page.

12. When the entire reprogramming process is complete, the screen in Figure 7 will display.
13. Verify the before and after part numbers are different.
14. Print a copy of this screen (Figure 7) and attach it to the repair order for warranty documentation.
15. Select **Confirm**.

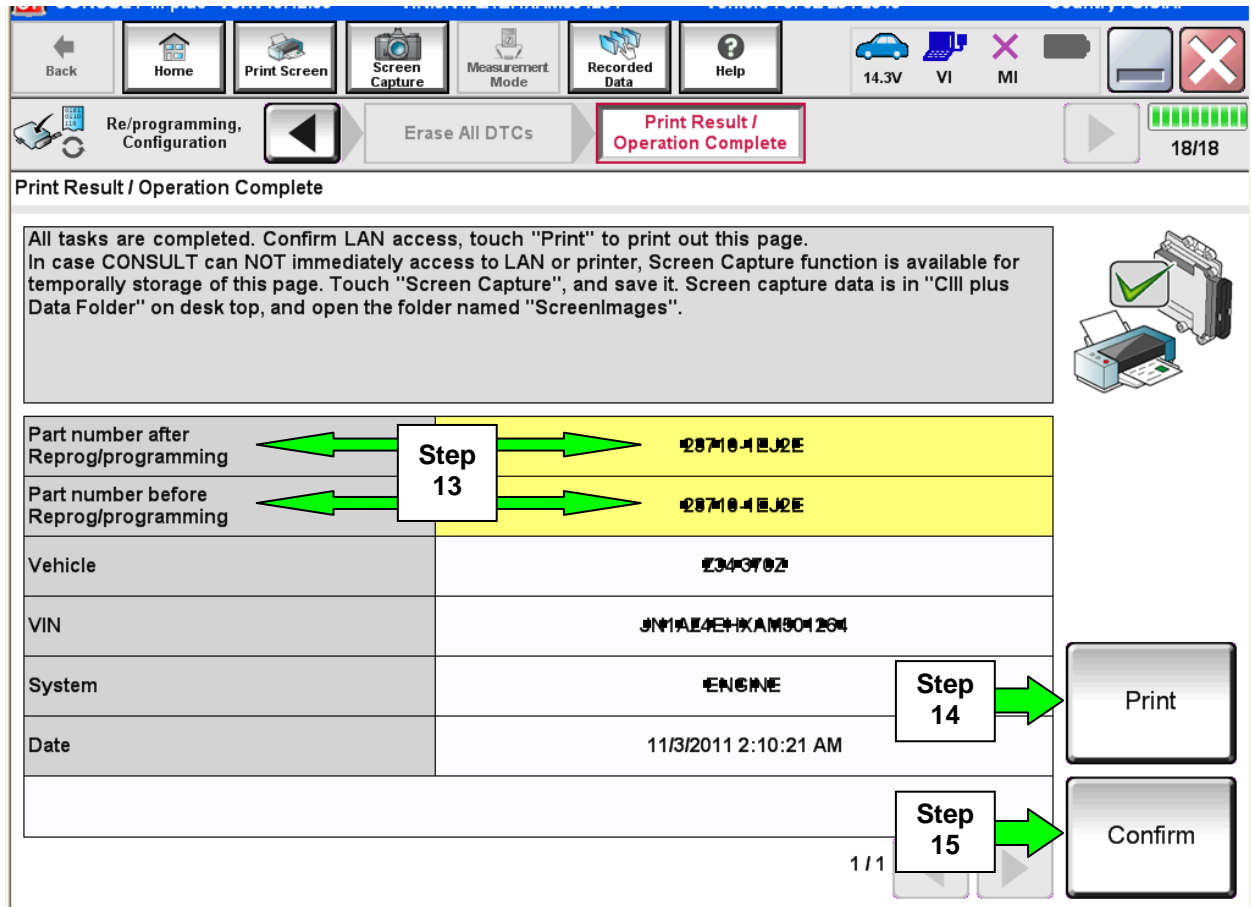


Figure 7

16. Make sure you have performed ECM (and if applicable, TCM) reprogramming (ECM first).
17. Close C-III plus.
18. Turn the ignition OFF.
19. Disconnect the plus VI from the vehicle.

Go to the next page.

Rear O2 Sensor(s)

1. Replace the rear O2 sensor(s) on the affected bank(s) (related to the stored DTC).

- Refer to section **EM-Mechanical** of the appropriate Electronic Service Manual (ESM) for rear O2 sensor replacement.

NOTE: Do NOT replace both rear O2 sensors if the DTC(s) is for one rear O2 sensor.

WARNING: Exhaust system parts may be hot.

2. Test drive the vehicle and make sure it operates correctly and the MIL is OFF.

- If the MIL comes ON, go back to ASIST for further diagnostic information.
- Diagnosis and repairs beyond the contents of this bulletin are not covered by this bulletin.

PARTS INFORMATION

MODEL	DESCRIPTION	PART NUMBER	QTY
ALL	HEATED OXYGEN SENSOR, LH REAR	226A0-BV80A	1
ALL	HEATED OXYGEN SENSOR, RH REAR	226A0-4LA0A	1

CLAIMS INFORMATION

Submit a Primary Part (PP) type line claim using the following claims coding:

Replace Rear O2 Sensor

One

DESCRIPTION	PFP	OP CODE	SYM	DIA	FRT
Replace Rear O2 Sensor	(1)	DE53AA	HD	32	(2)

- (1) Use the appropriate part number listed above in the parts information table.
- (2) Reference the current Nissan Warranty Flat Rate Manual and use the indicated FRT.

Or

Both

DESCRIPTION	PFP	OP CODE	SYM	DIA	FRT
Replace Rear O2 Sensors	(1)	DE55AA	HD	32	(2)

- (1) Use the appropriate part number listed above in the parts information table.
- (2) Reference the current Nissan Warranty Flat Rate Manual and use the indicated FRT.

And on the **same repair line**:

DESCRIPTION	OP CODE	FRT
Reprogram ECM	DE97AA	(1) (2)

- (1) Reference the current Nissan Warranty Flat Rate Manual and use the indicated FRT.
- (2) FRT allows adequate time to access DTC codes and reprogram ECM. No other diagnostic procedures subsequently required. Do NOT claim any Diagnostic Op Codes with this claim.

And on the **same repair line** if the **TCM** is reprogrammed (**Murano**):

DESCRIPTION	OP CODE	FRT
Reprogram TCM	JE0AAA	(1) (2)

- (1) Reference the current Nissan Warranty Flat Rate Manual and use the indicated FRT.
- (2) FRT allows adequate time to access DTC codes and reprogram ECM. No other diagnostic procedures subsequently required. Do NOT claim any Diagnostic Op Codes with this claim.