



SERVICE BULLETIN

Classification: BR15-001b	Reference: NTB15-047b	Date: June 25, 2015
------------------------------	--------------------------	------------------------

2014-2015 ALTIMA; BRAKE PAD WEAR ON RIGHT REAR ONLY

This bulletin has been amended to change the explanation of the VIN information in the Applied Vehicles section. Please discard the previous version.

APPLIED VEHICLE: 2014 – 2015 Altima (L33)

APPLIED VIN AND DATE: 2014 Altima built **after** 1N4(*)L3AP(*)EC **148906** / Oct 1, 2013
 1N4(*)L3AP(*)EN **235229** / Oct 1, 2013
 2015 Altima built **before** 1N4(*)L3AP(*)FN **873488** / May 07, 2015
 1N4(*)L3AP(*)FC **439562** / May 07, 2015

IF YOU CONFIRM:

- The outside brake pad (pad furthest from caliper piston) of the right rear brake caliper has excessive wear or noise.

And

- There IS NOT a “stamping mark” on the Torque Member (shown and described in Figure 1, page 2).

NOTE: This stamping mark can be on either the right or left machined surface of the Torque Member.

This bulletin does not apply if stamping mark is present as described in Figure 1.

ACTION:

Replace the right rear brake caliper Torque Member and rear brake pad set with those from Parts Information; do not resurface rotors.

IMPORTANT: The upper and lower sliding pin bolts, that align the caliper to the Torque Member, are not interchangeable. When reassembling the caliper to the torque member, place the sliding pin bolt with the black insert (Figure 2, page 2) into the upper position.

Refer to the Electronic Service Manual (ESM) section, **BR – Brake System** for further information.

Nissan Bulletins are intended for use by qualified technicians, not 'do-it-yourselfers'. Qualified technicians are properly trained individuals who have the equipment, tools, safety instruction, and know-how to do a job properly and safely. NOTE: If you believe that a described condition may apply to a particular vehicle, DO NOT assume that it does. See your Nissan dealer to determine if this applies to your vehicle.

- Figure 1 shows a good Torque Member.

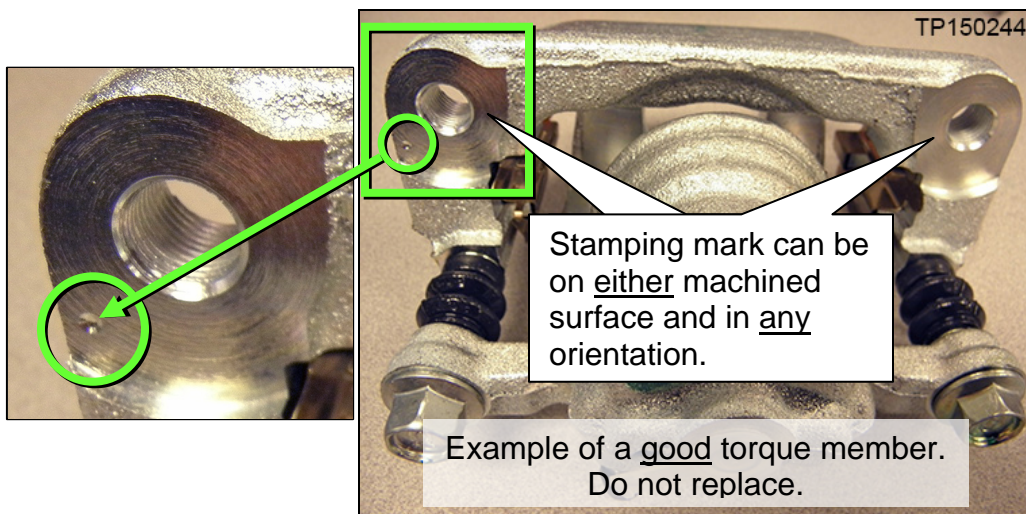


Figure 1

- Figure 2 shows the correct orientation of the sliding pin bolts.

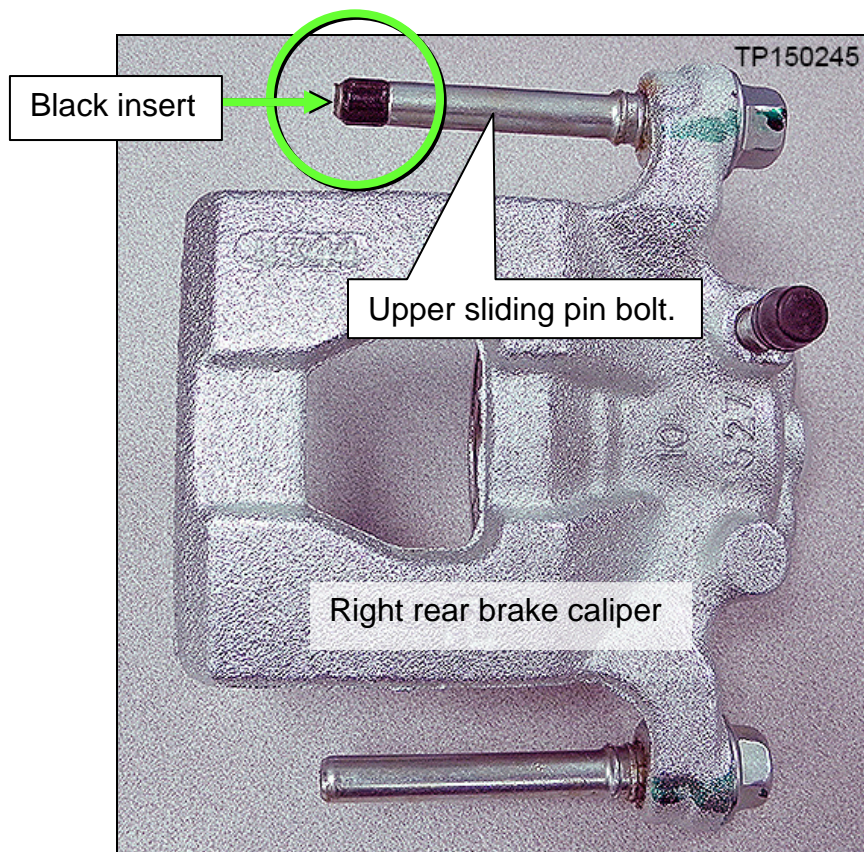


Figure 2

PARTS INFORMATION

DESCRIPTION	PART #	QUANTITY
RH Rear Torque Member	44014-JA01B	1
Rear Brake Pads	D4060-9HM0B	1 set
Torque Member Bolt Washers	01311-01251	4
Rotor	43206-JA00B	2(1)

(1) Replace (as a set) only if the right rear brake pad material has been worn to the backing plate and the rotor has been scored.

CLAIMS INFORMATION

DESCRIPTION	PFP	OP CODE	SYM	DIA	FRT
Replace Pad Sets Both Sides	44014-JA01B	PD19AA	ZE	32	(1)

(1) Reference the current Nissan Warranty Flat Rate Manual and use the indicated flat rate time.

And if needed

DESCRIPTION	OP CODE	FRT
Replace both brake rotors	PD23AA	(1)

(1) Reference the current Nissan Warranty Flat Rate Manual and use the indicated flat rate time.

