



SERVICE BULLETIN

Classification: EL16-001	Reference: NTB16-008	Date: January 15, 2016
-----------------------------	-------------------------	---------------------------

NISSAN; THEFT ALARM TRIGGER HISTORY FUNCTION

APPLIED VEHICLES: 2015-2016 Murano (Z52)
2013-2016 Pathfinder (R52)
2016 Maxima (A36)
2013-2016 Altima (L33)

SERVICE INFORMATION

The function to detect the last item to trigger the vehicles theft alarm system can now be accessed with CONSULT-III plus (C-III plus).

This theft alarm history information can be used to confirm what triggered a past theft alarm audible alert.

EXAMPLE: A customer describes that the alarm sounds for no apparent reason at some point in the past.

This function can be accessed by selecting:

- **Diagnosis (All Systems)** or **Diagnosis (One System)**.

Then

- **BCM**

Then

- **THEFT ALM**

Then

- **Work Support**

Then

- **THEFT ALM TRG**

See Service Procedure for more detail.

Nissan Bulletins are intended for use by qualified technicians, not 'do-it-yourselfers'. Qualified technicians are properly trained individuals who have the equipment, tools, safety instruction, and know-how to do a job properly and safely. NOTE: If you believe that a described condition may apply to a particular vehicle, DO NOT assume that it does. See your Nissan dealer to determine if this applies to your vehicle.

SERVICE PROCEDURE

1. Turn the vehicle ON, but do not start the engine.
2. Connect the VI and start C-III plus.
3. To access the theft alarm trigger function, navigate the C-III plus to the screen below through either **Diagnosis (One System)** or **Diagnosis (All Systems)** and then **BCM**.
4. Select **THEFT ALM**.

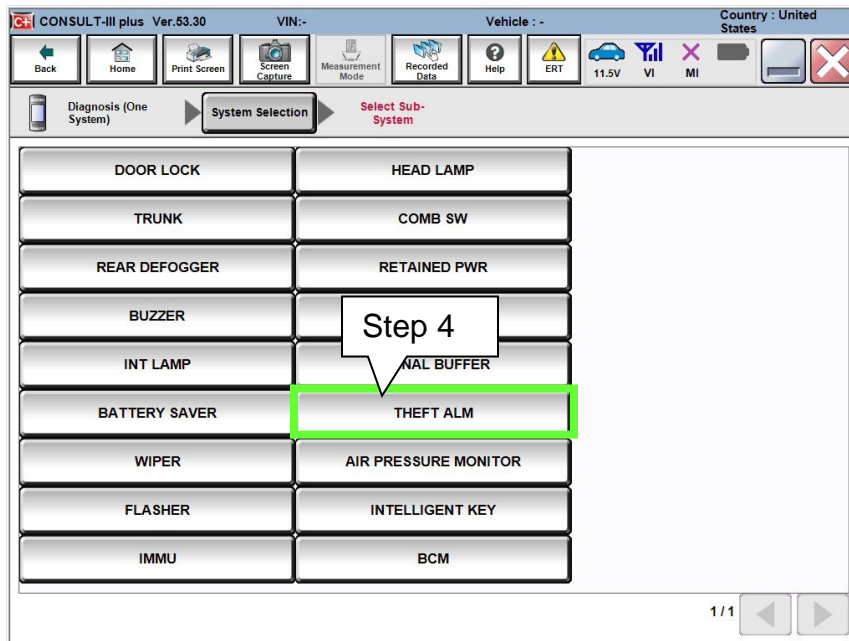


Figure 1

5. Select **Work Support**.

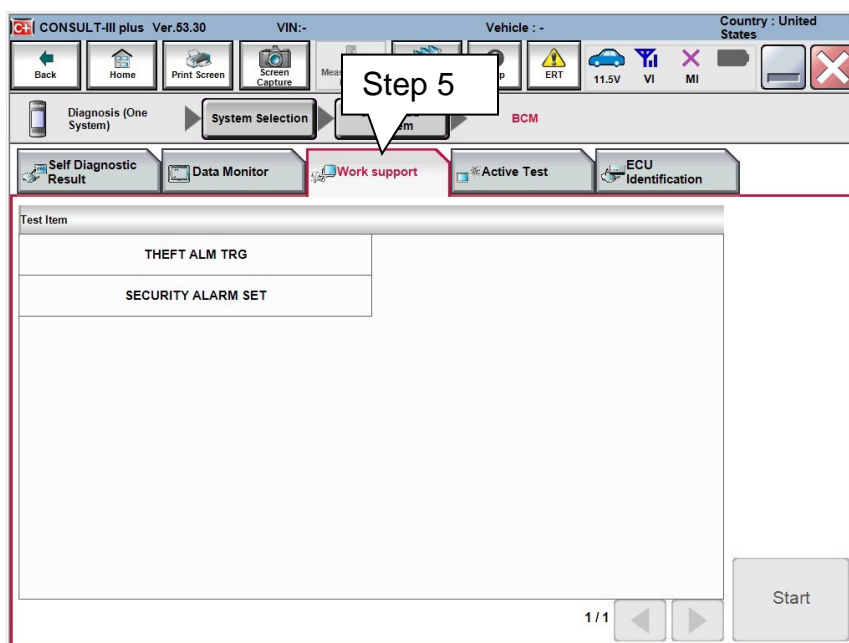


Figure 2

6. Select **THEFT ALM TRG** under Test Item.

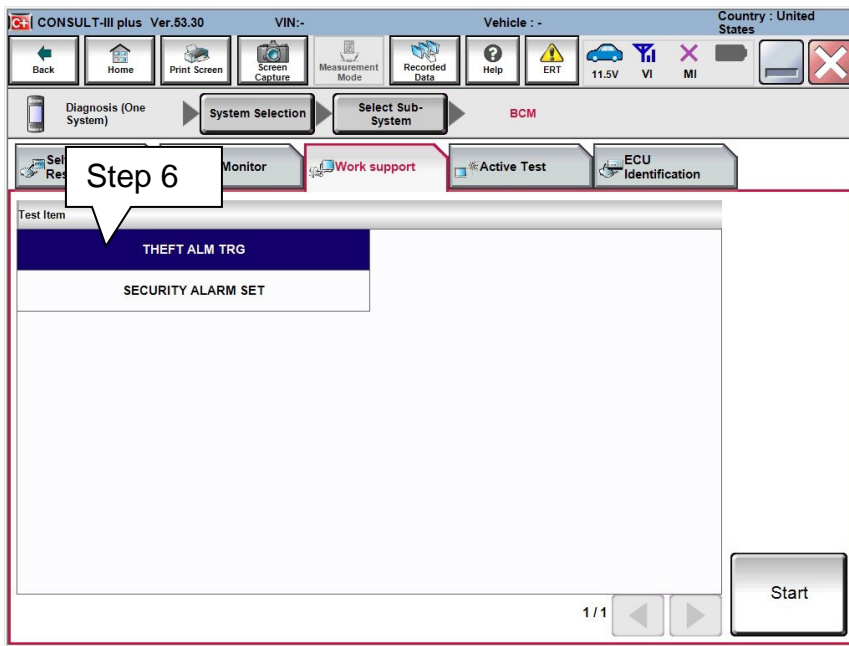


Figure 3

- CONSULT-III plus will display a list of all the theft alarm Monitor Items (Figure 4).
 - The last trigger to set off the alarm will be displayed as “On”.
 - If no triggers were detected, all Monitor Items will show as “Off”

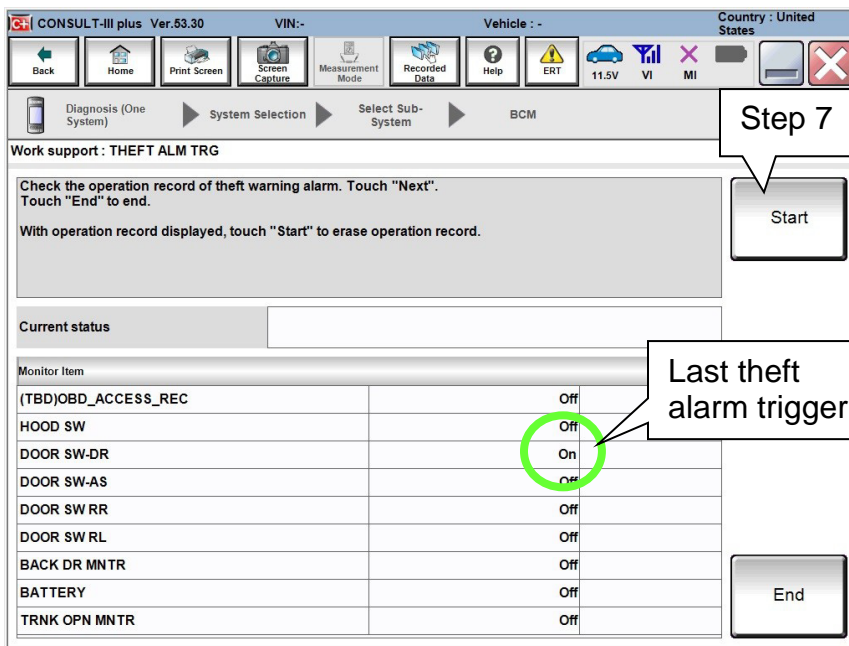


Figure 4

7. After a theft alarm trigger has been noted, the history can be cleared by selecting **Start**.