

Classification:

EL16-002

Reference:

ITB16-009

COPYRIGHT© NISSAN NORTH AMERICA, INC.  
Date:

January 15, 2016

## INFINITI; THEFT ALARM TRIGGER HISTORY FUNCTION

**APPLIED VEHICLES:** 2013 JX (L50)  
2014-2015 QX60 (L50)  
2014-2015 QX60 Hybrid (L50)  
2014-2015 Q50 (V37)  
2014-2015 Q50 Hybrid (V37)

### SERVICE INFORMATION

The function to detect the last item to trigger the vehicles theft alarm system can now be accessed with CONSULT-III plus (C-III plus).

This theft alarm history information can be used to confirm what triggered a past theft alarm audible alert.

**EXAMPLE:** A customer describes that the alarm sounds for no apparent reason at some point in the past.

This function can be accessed by selecting:

- **Diagnosis (All Systems) or Diagnosis (One System).**

Then

- **BCM**

Then

- **THEFT ALM**

Then

- **Work Support**

Then

- **THEFT ALM TRG**

See Service Procedure for more detail.

Infiniti Bulletins are intended for use by qualified technicians, not 'do-it-yourselfers'. Qualified technicians are properly trained individuals who have the equipment, tools, safety instruction, and know-how to do a job properly and safely. NOTE: If you believe that a described condition may apply to a particular vehicle, DO NOT assume that it does. See your Infiniti retailer to determine if this applies to your vehicle.

## SERVICE PROCEDURE

1. Turn the vehicle ON, but do not start the engine.
2. Connect the VI and start C-III plus.
3. To access the theft alarm trigger function, navigate the C-III plus to the screen below through either **Diagnosis (One System)** or **Diagnosis (All Systems)** and then **BCM**.
4. Select **THEFT ALM**.

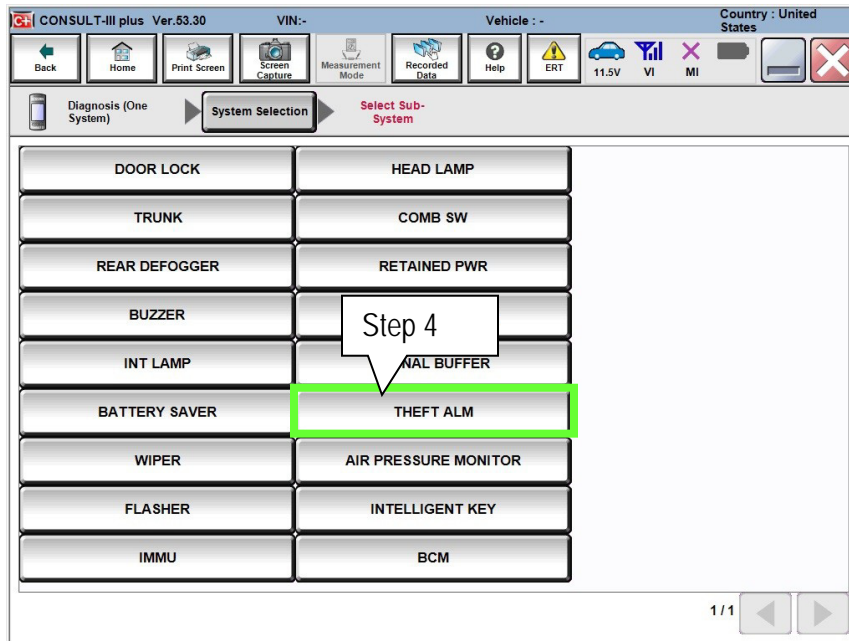


Figure 1

5. Select **Work Support**.

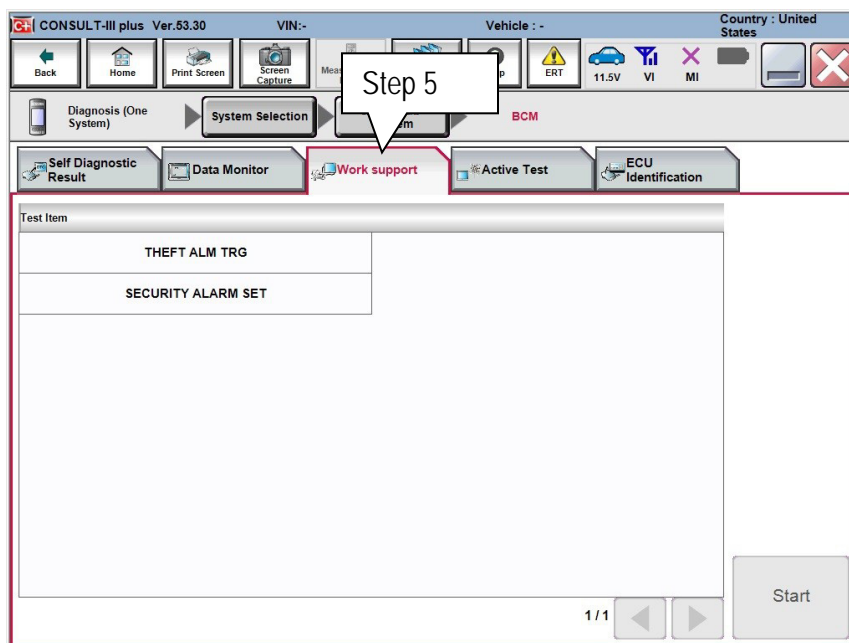


Figure 2

6. Select THEFT ALM TRG under Test Item.

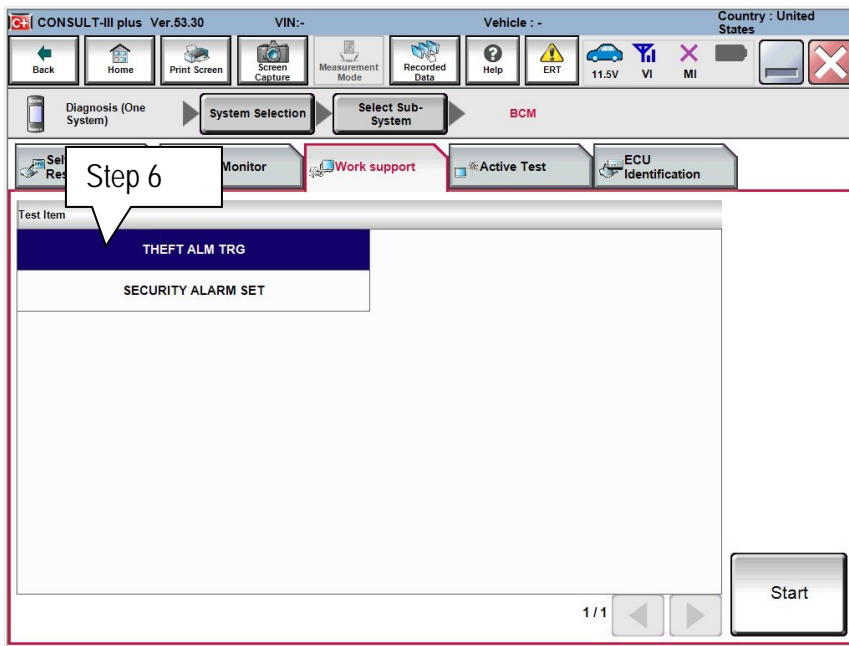


Figure 3

- CONSULT-III plus will display a list of all the theft alarm Monitor Items (Figure 4).
  - The last trigger to set off the alarm will be displayed as "On".
  - If no triggers were detected, all Monitor Items will show as "Off"

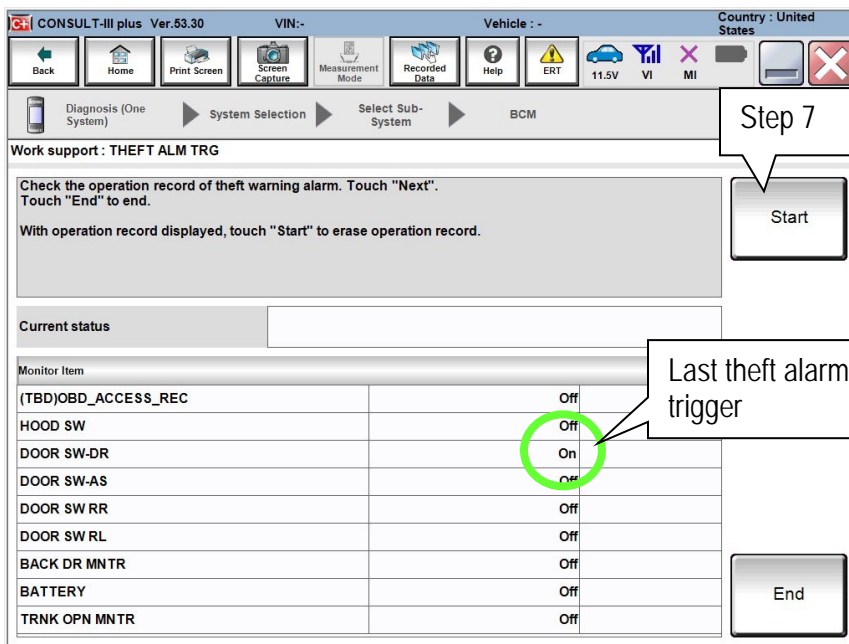


Figure 4

7. After a theft alarm trigger has been noted, the history can be cleared by selecting Start.