



---

# SERVICE BULLETIN

---

Classification: EC15-012	Reference: NTB15-057	Date: June 29, 2015
-----------------------------	-------------------------	------------------------

---

## 2013-2014 SENTRA; INTERMITTENT ROUGH/LOW IDLE WHEN STOPPED

**APPLIED VEHICLE:** 2013-2014 Sentra (B17)

### IF YOU CONFIRM:

The engine idle is rough when the A/C compressor engages or a sudden electrical load is applied (such as operating a power window),

### WHEN

The vehicle is stopped

### AND

The transmission is in gear with the brakes applied.

**NOTE:** This incident does not occur when coming to a stop.

### ACTION:

1. Compare the vehicle's current ECM part number to those listed in **Table A** (see page 5).
2. If the ECM part number matches one listed in **Table A**, reprogram the ECM.
  - If there is NOT an ECM part number match, this bulletin does not apply. Refer to ASIST and the Electronic Service Manual (ESM) for further diagnosis.

**IMPORTANT:** The purpose of **ACTION** (above) is to give you a quick idea of the work you will be performing. You **MUST** closely follow the entire SERVICE PROCEDURE as it contains information that is essential to successfully completing this repair.

Nissan Bulletins are intended for use by qualified technicians, not 'do-it-yourselfers'. Qualified technicians are properly trained individuals who have the equipment, tools, safety instruction, and know-how to do a job properly and safely.  
**NOTE:** If you believe that a described condition may apply to a particular vehicle, **DO NOT** assume that it does. See your Nissan dealer to determine if this applies to your vehicle.

## SERVICE PROCEDURE

### ECM Part Number Check / Reprogramming

#### NOTE:

- Most instructions for reprogramming with CONSULT-III plus (C-III plus) are displayed on the CONSULT PC screen.
- If you are not familiar with the reprogramming procedure, *click here*. This will link you to the "CONSULT-III plus (C-III plus) Reprogramming" general procedure.
- Take the vehicle for a 10 minute drive in order to meet the following Idle Air Volume Learn (IAVL) conditions:
  - Engine coolant temperature: 70 -100°C (158 -212°F)
  - Battery voltage: More than 12.9V (At idle)
  - Transmission: Warmed up



Figure A

- After reprogramming is complete, you will be required to perform Throttle Valve Closed Position, Idle Air Volume Learn, Accelerator Closed Position, and DTC erase.

#### CAUTION:

- Connect the GR8 to the vehicle 12 volt battery and set to ECM power supply mode. If the vehicle battery voltage drops below 12.0V or rises above 13.5V during reprogramming, the ECM may be damaged.
- Be sure to turn OFF all vehicle electrical loads.  
If a vehicle electrical load remains ON, the ECM may be damaged.
- Be sure to connect the AC Adapter.  
If the CONSULT PC battery voltage drops during reprogramming, the process will be interrupted and the ECM may be damaged.
- Turn off all external Bluetooth® devices (e.g., cell phones, printers, etc.) within range of the CONSULT PC and the plus VI. If Bluetooth® signal waves are within range of the CONSULT PC during reprogramming, reprogramming may be interrupted and the ECM may be damaged.

1. Connect the CONSULT PC to the vehicle to begin the reprogramming procedure.
2. Open C-III plus.
3. Wait for the plus VI to be recognized.
  - Serial number will display when the plus VI is recognized.
4. Select **Re/programming, Configuration**.

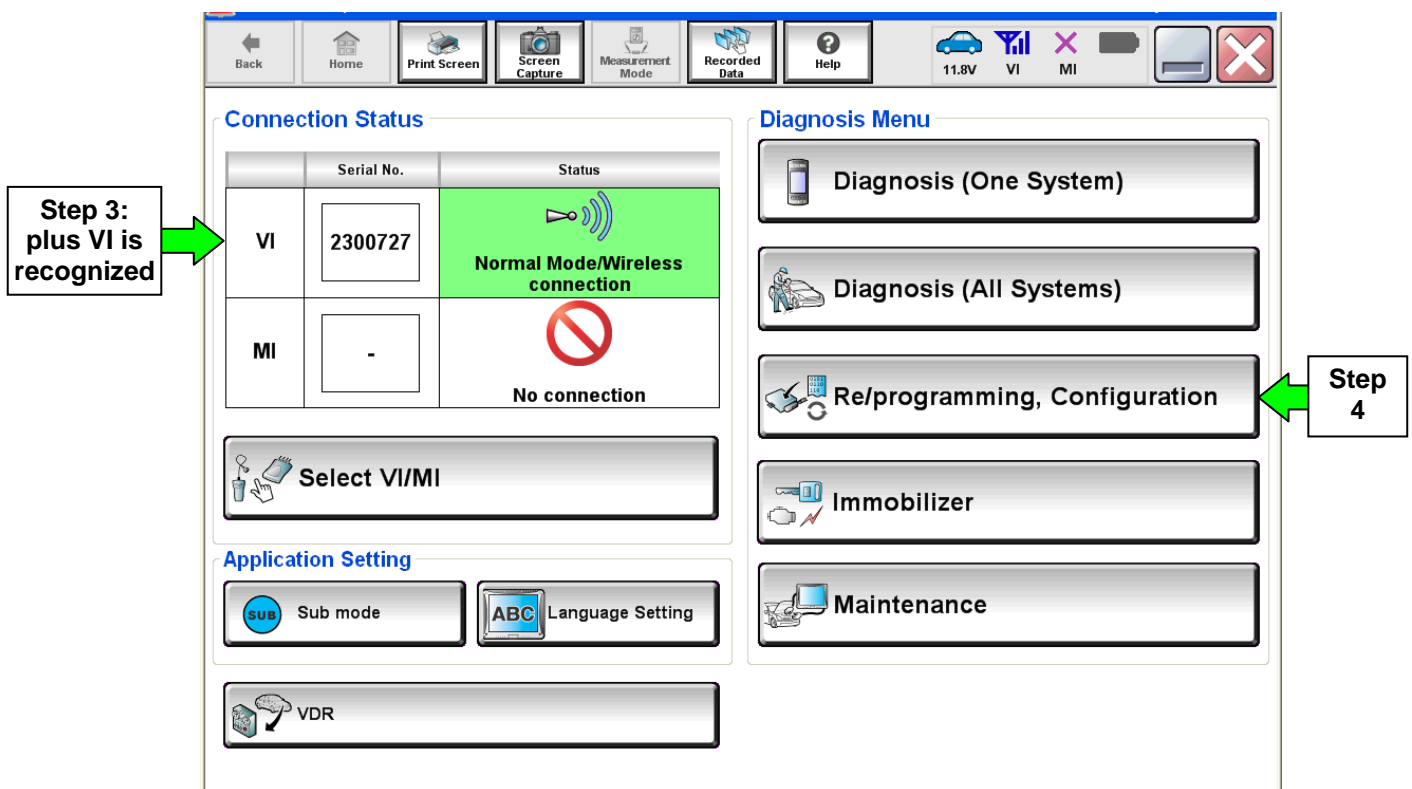


Figure 1

5. Follow the on-screen instructions and navigate the C-III plus to the screen shown in Figure 2 on the next page.

6. When you get to the screen shown in Figure 2, confirm this bulletin applies as follows.

A. Find the ECM **Part Number** and write it on the repair order.

**NOTE:** This is the current ECM Part Number (P/N).

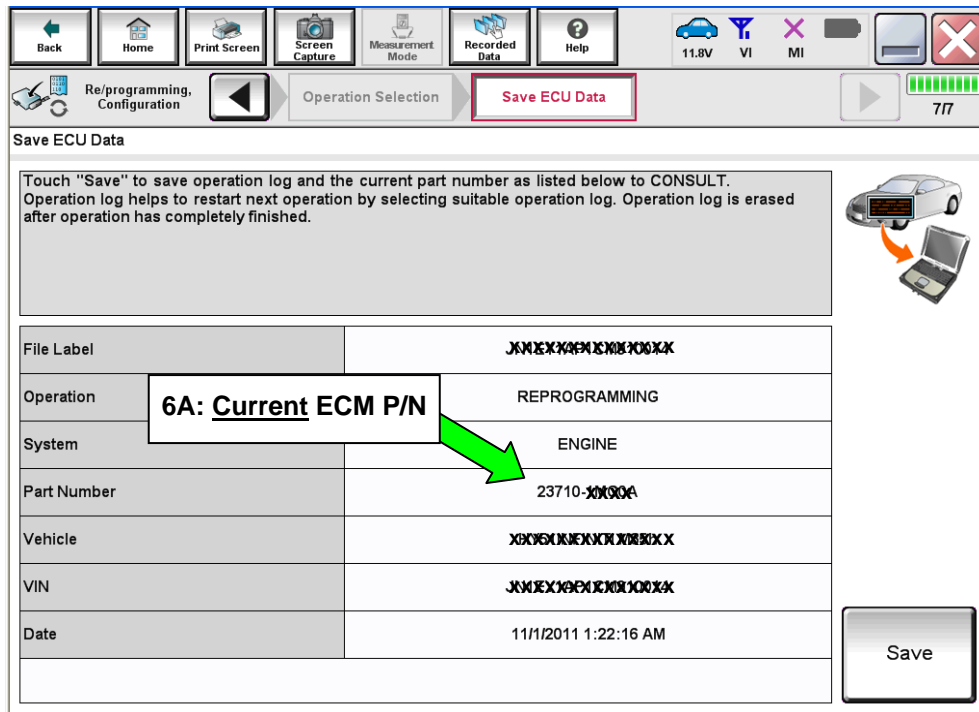


Figure 2

B. Compare the P/N you wrote down to the numbers in the **Current ECM Part Number** column in **Table A** on the next page.

- If there is a match, the ECM needs to be reprogrammed. Continue with the reprogramming procedure.
- If there is not a match, ECM reprogramming does not apply. Refer to ASIST and the ESM for further diagnosis.

**Table A**

<b>Model</b>	<b>Current ECM Part Number: 23710 -</b>
<b>2013 Sentra</b>	3SA2A, 3SA2B, 3SA2C, 3SA2D, 3SA2E
	3SA3A
	3SA4A, 3SA4B, 3SA4C, 3SA4D, 3SA4E
	3SA5A, 3SA5B, 3SA5C, 3SA5D, 3SA5E
	3SB0A, 3SB0B, 3SB0C, 3SB0D, 3SB0E
	3SG2A, 3SG2B, 3SG2C, 3SG2D, 3SG2E
	3SG3B, 3SG3C, 3SG3D, 3SG3E
	3SG6A, 3SG6B, 3SG6C, 3SG6D
	3SG7A, 3SG7B, 3SG7C, 3SG7D
	3SR2A, 3SR2B, 3SR2C, 3SR2D
	3SR3A, 3SR3B, 3SR3C, 3SR3D
	3SZ0A, 3SZ0B
	3SZ1A, 3SZ1B
<b>2014 Sentra</b>	9AM0A, 9AM0B, 9AM0C, 9AM0D, 9AM0E
	9AM1A, 9AM1B, 9AM1C, 9AM1D, 9AM1E
	9AM2A, 9AM2B, 9AM2C, 9AM2D, 9AM2E
	9AM3A, 9AM3B, 9AM3C, 9AM3D, 9AM3E

7. Follow the on-screen instructions to navigate C-III plus and reprogram the ECM.

**NOTE:**

- In some cases, more than one new P/N for reprogramming is available.
  - In this case, the screen in Figure 3 displays.
  - Select and use the reprogramming option that **does not** have the message “Caution! Use ONLY with NTBXX-XXX”.
- If you get this screen and it is blank (no reprogramming listed), it means there is no reprogramming available for this vehicle. Close C-III plus and refer back to ASIST for further diagnosis.

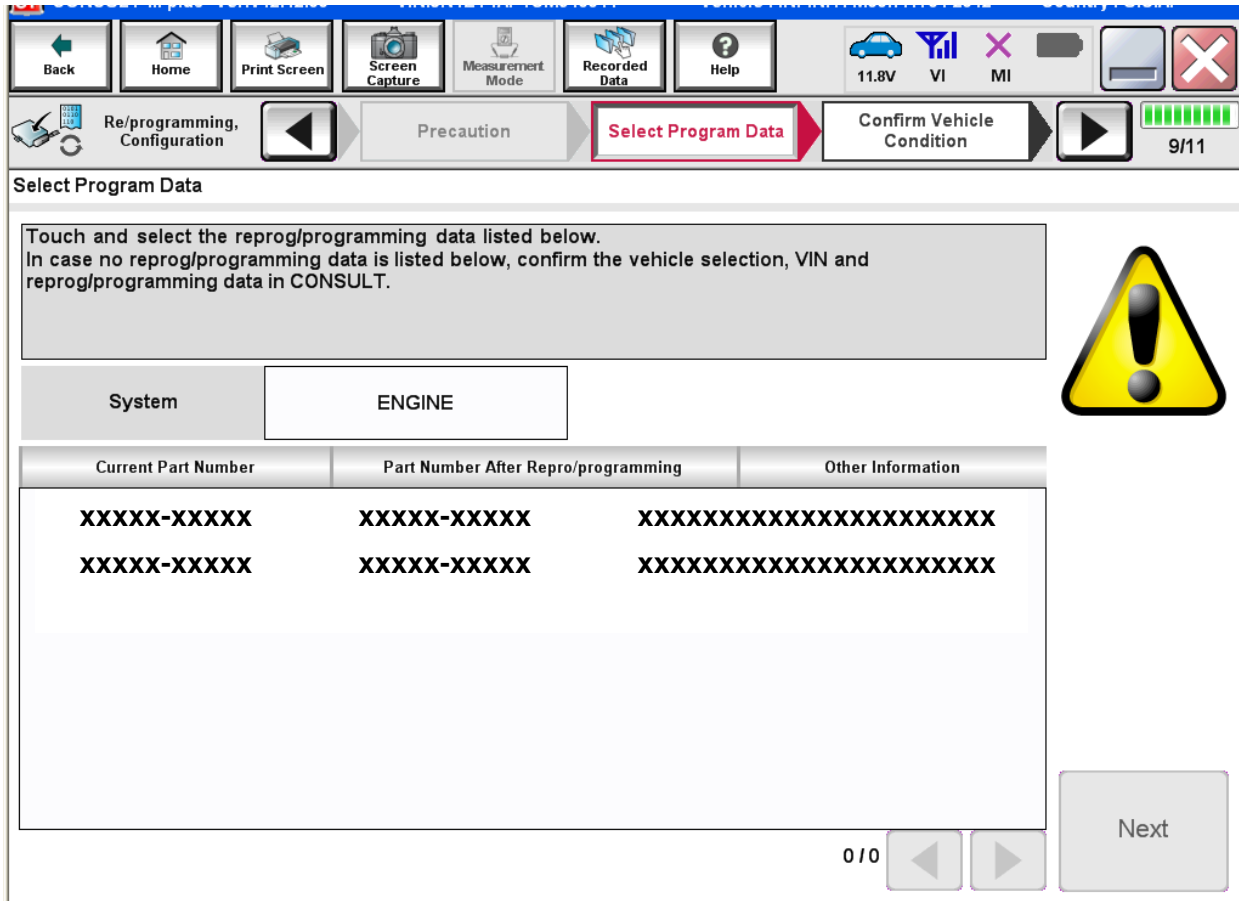


Figure 3

8. When the screen in Figure 4 displays, reprogramming is complete.

**NOTE:** If the screen in Figure 4 does not display (reprogramming does not complete), refer to the information on the next page.

9. Disconnect the battery charger from the vehicle.

10. Select **Next**.

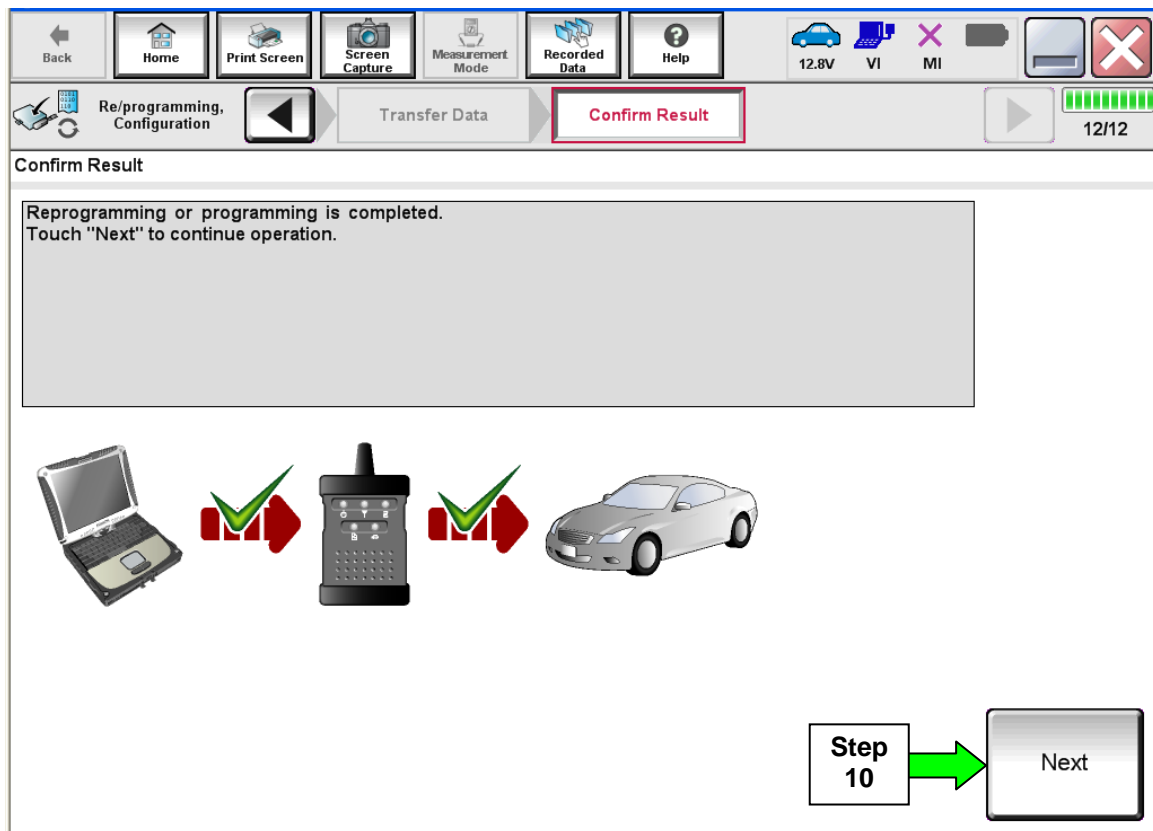


Figure 4

**NOTE:**

- In the next steps (page 9), you will perform Throttle Valve Closed Position, Idle Air Volume Learn, Accelerator Closed Position, and DTC erase.
- These operations are required before C-III plus will provide the final reprogramming confirmation report.

## ECM Recovery

**Do not disconnect plus VI or shut down C-III plus if reprogramming does not complete.**

If reprogramming does not complete and the “!?” icon displays as shown in Figure 5:

- Check battery voltage (12.0–15.5 V).
- Ignition is ON, engine OFF.
- External Bluetooth® devices are OFF.
- All electrical loads are OFF.
- **Select retry and follow the on screen instructions.**
- “Retry” may not go through on first attempt and can be selected more than once.

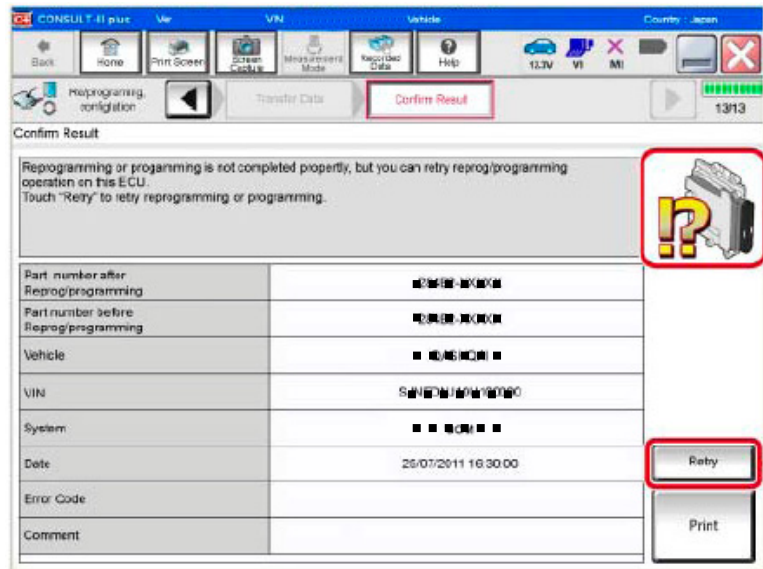


Figure 5

If reprogramming does not complete and the “X” icon displays as shown in Figure 6:

- Check battery voltage (12.0–15.5 V).
- CONSULT A/C adapter is plugged in.
- Ignition is ON, engine OFF.
- Transmission is in Park.
- All C-III plus / VI cables are securely connected.
- All C-III plus updates are installed.
- **Select Home, and restart the reprogram procedure from the beginning.**

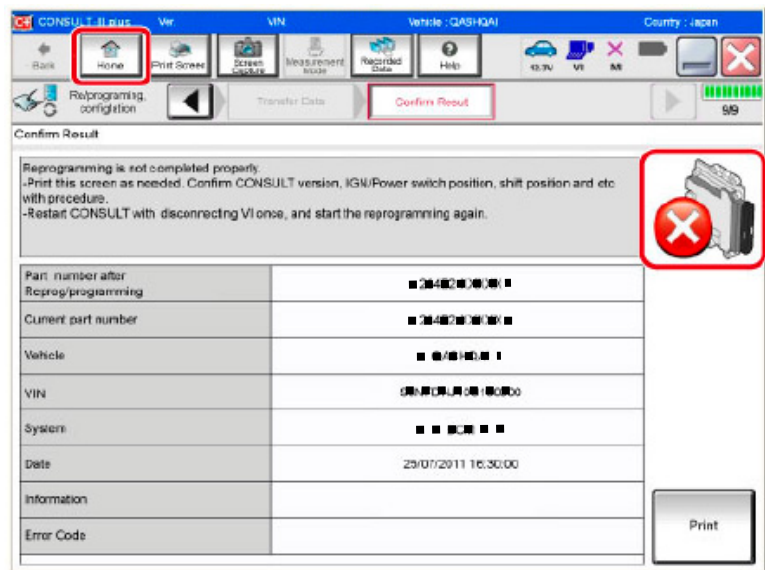


Figure 6



11. Follow the on-screen instructions to perform the following:

- **Throttle Valve Closed Position**
- **Idle Air Volume Learn (IAVL)**

**NOTE:**

- **Listed below are common conditions required for IAVL to complete.**
  - **If IAVL does not complete within a few minutes, a condition may be out of range.**
  - **Refer to the appropriate Electronic Service Manual (ESM) for specific conditions required for the vehicle you are working on.**
    - Engine coolant temperature: 70 -100° C (158 -212°F)
    - Battery voltage: More than 12.9V (At idle)
    - Selector lever: P or N
    - Electric load switch: OFF (Air conditioner, headlamp, rear window defogger)
    - Steering wheel: Neutral (Straight-ahead position)
    - Vehicle speed: Stopped
    - Transmission: Warmed up
- 
- **Accelerator Pedal Close Position Learning**
  - **Erase DTCs**

Continue to the next page.

12. When the entire reprogramming process is complete, the screen in Figure 7 will display.
13. Verify the before and after part numbers are different.
14. Print a copy of this screen (Figure 7) and attach it to the repair order for warranty documentation.
15. Select **Confirm**.

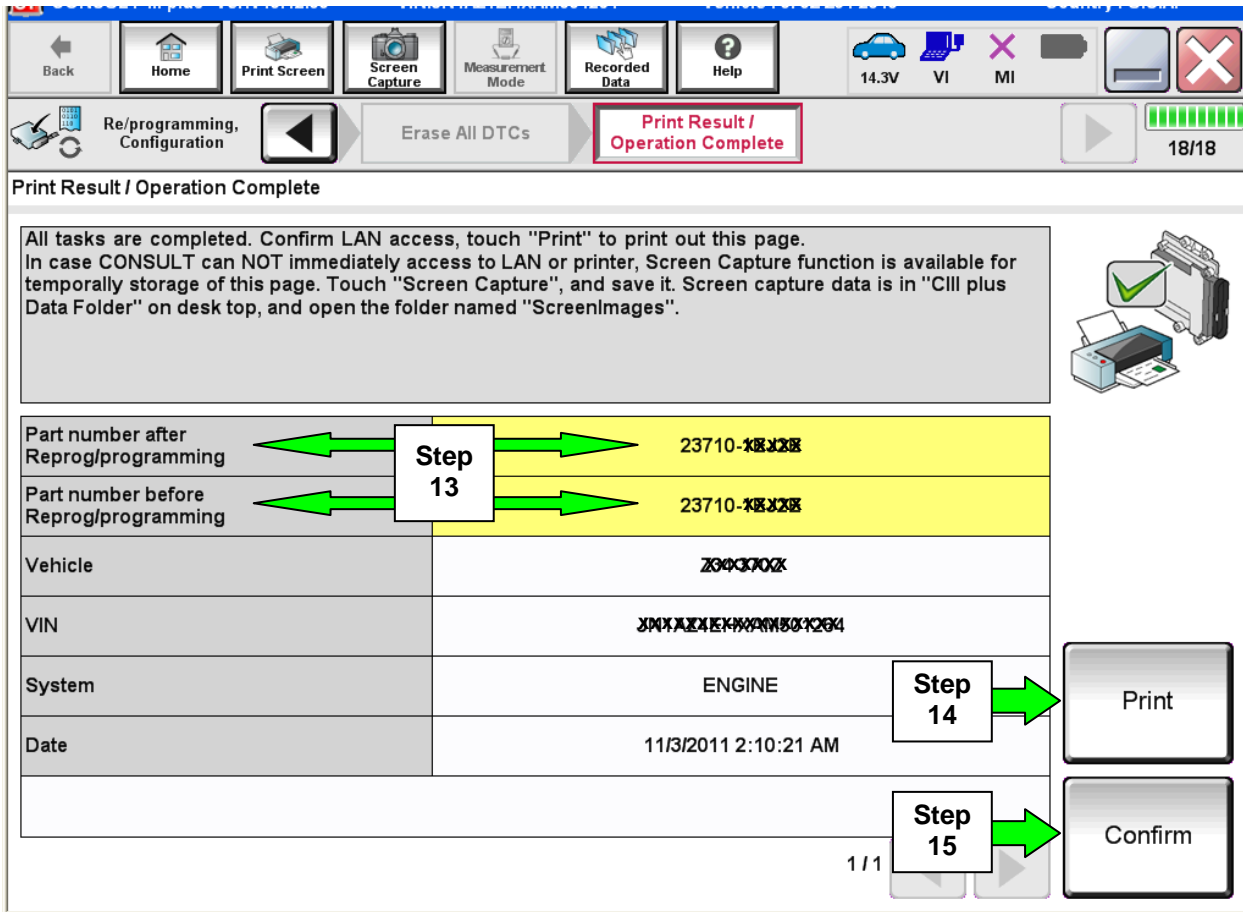


Figure 7

## CLAIMS INFORMATION

Submit a Primary Part (PP) type line claim using the following claims coding:

DESCRIPTION	PFP	OP CODE	SYM	DIA	FRT
Reprogram Engine Control Module	(1)	DE97AA	ZE	32	(2) (3)

- (1) Refer to the electronic parts catalog (FAST) and use the ECM assembly part number as the Primary Failed Part (PFP).
- (2) Reference the current Nissan Warranty Flat Rate Manual and use the indicated FRT.
- (3) FRT allows adequate time to access DTC codes and reprogram ECM. No other diagnostic procedures subsequently required. Do NOT claim any Diagnostic Op Codes with this claim.