



**Technical News 165**  
**October 2015**  
**Strictly Confidential**

<b>Contents</b>		
<b>Item</b>	<b>Subject</b>	<b>Model Affected</b>
Item 1.	Mudguard Extension Australia, India and New Zealand Markets Only	Models With A Mudguard Extension
Item 2.	Swinging Arm/Chain Rubbing Strip	Tiger Models fitted with an 800 cc engine
Item 3.	Final Drive Unit	Rocket All Models
Item 4.	Maximum Payload	Tiger XRx-LRH (low ride height)
Item 5.	Twist Grip Position Sensor	Tiger Explorer All Models, Trophy And Trophy SE
Item 6.	Rear Suspension Drag Link and Drop Link Fixings	Tiger XR, Tiger XRx, Tiger XRx-LRH, Tiger XRt, Tiger XC, Tiger XCx, Tiger XCx-LRH, Tiger XCA
Item 7.	Recommended Crankcase Sealant	All Models
Item 8.	Silencer Heat Shield Clamp Fixings	Rocket III Roadster, Rocket X
Item 9.	Front Brake Caliper Bolts	Rocket III Roadster, Rocket X, Rocket III Touring, Thunderbird, Thunderbird Storm, Thunderbird Night Storm, Thunderbird Commander, Thunderbird LT
Item 10.	Oxygen Sensor	All Models
Item 11.	Seat Latch Fixings	Daytona 675 and Daytona 675R
Item 12.	Belly Pan Fixings	All Speed Triple and Speed Triple R models from VIN 461332
Item 13.	Top Yoke Washer	Thunderbird ABS and Thunderbird Storm ABS

---

**Item 1.****Description:** Mudguard Extension Australia, India and New Zealand Markets Only**Models affected:** Models With A Mudguard Extension

Due to a regulation change in the above countries it is no longer required to fit a rear mudguard extension. Therefore, during manufacture the mudguard extension will be phased out and motorcycles will no longer be fitted with a mudguard extension.

**Please mark your copy of the Service Manual with this information.**

**Item 2.****Description:** Swinging Arm/Chain Rubbing Strip**Models affected:** Tiger Models fitted with an 800 cc engine

A new swinging arm and chain rubbing strip have been released for the above models. The new chain rubbing strip is not retrofittable to the previous swinging arm.

A swinging arm and chain rubbing strip kit has also been released for use when replacing the swinging arm on the above models.

**Note:**

- The new swinging arm and chain rubbing strip are not individually retrofittable to earlier models.
- The new swinging arm and chain rubbing strip are retrofittable to earlier models only when fitted together as part of a spares kit.
- Refer to the following table when replacing either the swinging arm or chain rubbing strip on all Tiger models with an 800 cc engine:

When Replacing	Market	All Models	Use
Chain rubbing strip	All markets except Brazil and India	Up to VIN 727598	Chain rubbing strip T2051790
	Brazil and India markets only	Up to VIN 729056	Chain rubbing strip T2051790
	All markets except Brazil and India	From VIN 727599	Chain rubbing strip T2051795
	Brazil and India markets only	From VIN 729057	Chain rubbing strip T2051795
Swinging arm	All markets except Brazil and India	From VIN 466334 to VIN 727598	Parts kit T2052508
	Brazil and India markets only	From VIN 466334 to VIN 729056	Parts kit T2052508

If for any reason the swinging arm is replaced with a swinging arm kit, record the changes in the owner's Service Record Book.

**T2052508 - Kit, Swingarm spare kit - Tiger models with an 800 cc engine****Parts Kit Contents**

Kit Part Number	Kit Contents	Part Numbers
T2052508	Swinging arm	T2051703
	Chain rubbing strip	T2051795

**When ordering additional parts always refer to the EPC.**

---

### Item 3.

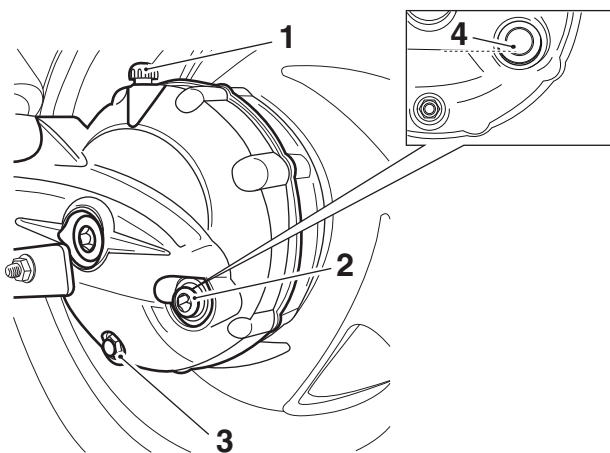
**Description:** Final Drive Unit

**Models affected:** Rocket All Models

When checking the oil level in the final drive unit during the pre-delivery inspection or service, always ensure the motorcycle is stationary and in an upright position to allow the fluid level to stabilise.

The instruction below reiterates the procedure described in the pre-delivery inspection.

- Clean the area around the breather outlet.
- Remove the filler/level plug (not the lower drain plug) to determine the fill level.
- With the aid of an assistant hold the motorcycle in an upright position.
- Allow any excess oil to drain, the oil level is correct when the oil is level with the bottom of the filler.
- Refit the oil filler/level plug and tighten to **60 Nm**.



1. Breather outlet
2. Filler/level plug
3. Final drive unit (silencer removed for illustrative purposes)
4. Oil level mark

If oil is noticed around the area of the breather outlet, always confirm the oil level is correct before commencing any further repair.

**Please mark your copy of the Service Manual with this information.**

---

**Item 4.**

**Description:** Maximum Payload  
**Models affected:** Tiger XR<sub>x</sub>-LRH (low ride height)

We have identified that the current Tiger 800 cc Service Manual contains an error in the General Information Frame section.

The Service Manual currently reads incorrectly and must be replaced by the details listed in the table below.

Maximum Payload (rider, passenger, luggage and accessories)	222 kg (489 lb) - Tiger XR	220 kg (485 lb) - Tiger XC
	219 kg (483 lb) - Tiger XR <sub>x</sub>	217 kg (478 lb) - Tiger XC <sub>x</sub>
	140 kg (308 lb) - Tiger XR <sub>x</sub> -LRH	221 kg (487 lb) - Tiger XC <sub>x</sub> -LRH
	213 kg (469 lb) - Tiger XR <sub>τ</sub>	210 kg (463 lb) - Tiger XC <sub>α</sub>

**Note:**

- Information contained on the official Triumph website and the Owner's Handbook is correct and need not be updated.

Please mark your copy of the Service Manual with this information.

**Item 5.**

**Description:** Twist Grip Position Sensor  
**Models affected:** Tiger Explorer All Models, Trophy And Trophy SE

We have noticed that the pinpoint test for the Twist Grip Position Sensor has an error in the Action section of the current Service Manuals:

- Tiger Explorer - part number 3852795
- Trophy and Trophy SE - part number 3852790

Test 1 of the pinpoint test now requests you to renew the twist grip sensor and proceed to test 2.

Therefore you are requested to replace the current page in the Service Manuals with the updated page attached as Appendix A.

Please mark your copy of the Service Manual with this information.

## Item 6.

**Description:** Rear Suspension Drag Link and Drop Link Fixings

**Models affected:** Tiger XR, Tiger XRx, Tiger XRx-LRH, Tiger XRt, Tiger XC, Tiger XCx, Tiger XCx-LRH, Tiger XCA

When installing the rear suspension drag link and drop links on the above models, follow the procedure described in the Service Manual noting the following:

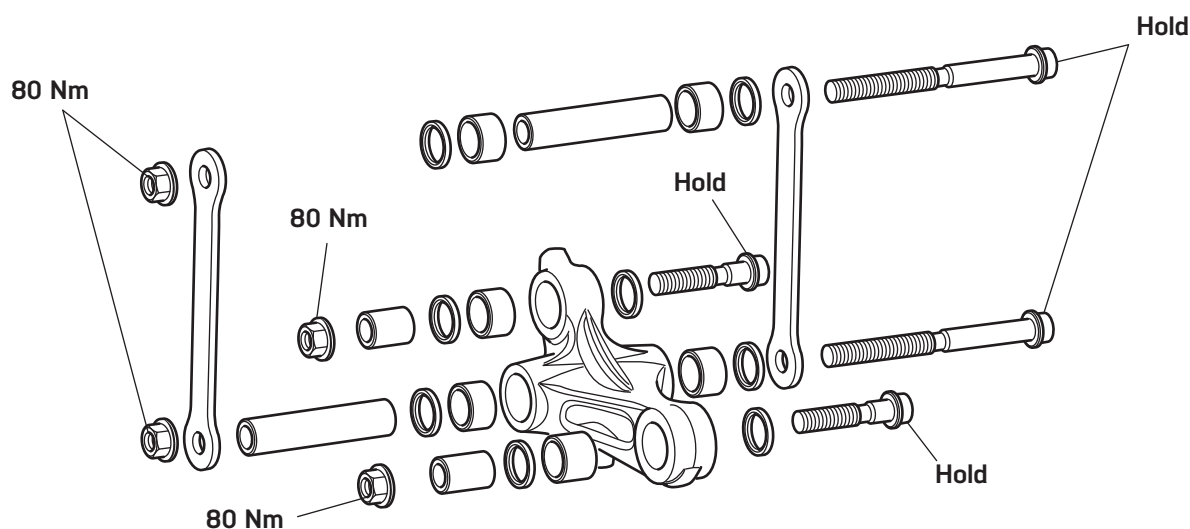
- When tightening the drag link and drop link fixings, hold the bolts to prevent rotation, while tightening the nuts to **80 Nm**.

### **Warning**

Tightening the rear suspension linkage fixings by any method other than the one described above may lead to an incorrect torque value being set.

Always ensure during rear suspension linkage assembly that the linkage bolts are held while the nuts are tightened to **80 Nm**.

Incorrectly tightened rear suspension linkage fixings may cause an unsafe riding condition, leading to loss of motorcycle control and an accident.



Please mark your copy of the Service Manual with this information.

## Item 7.

**Description:** Recommended Crankcase Sealant

**Models affected:** All Models

The Triumph recommended sealant ThreeBond 1215J has become obsolete in some countries. Therefore in all applications where ThreeBond 1215J is used, Triumph recommend using ThreeBond 1216E as a replacement.

Please mark your copy of the Service Manual with this information.

---

**Item 8.**

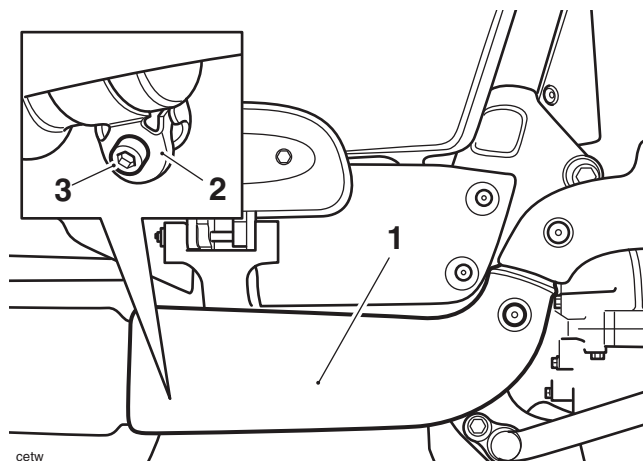
**Description:** Silencer Heat Shield Clamp Fixings

**Models affected:** Rocket III Roadster, Rocket X

The torque figure for the silencer heat shield clamp fixings has changed to **5 Nm** on the above models.

**Note:**

- **Models already in service need not be retightened unless the fixings have been loosened or removed.**



1. Silencer heat shield (right hand shown)
2. Clamp
3. Fixing

Please mark your copy of the Service Manual with this information.

**Item 9.**

**Description:** Front Brake Caliper Bolts

**Models affected:** Rocket III Roadster, Rocket X, Rocket III Touring, Thunderbird, Thunderbird Storm, Thunderbird Night Storm, Thunderbird Commander, Thunderbird LT

We have introduced the application of a high temperature copper-based grease to the threads of the front brake caliper bolts on the above models from VIN 723736.

**Warning**

Never use mineral-based grease (such as lithium or copper-based grease) in any area where contact with the braking system hydraulic seals and dust seals is possible.

Mineral-based grease will damage the hydraulic seals and dust seals in the calipers and master cylinders. Damage caused by contact with mineral-based grease may reduce braking efficiency resulting in an accident.

**Warning**

Do not apply more than a minimum coating of grease to the front brake caliper bolts. Excess grease may contaminate the brake pads, hydraulic seals and discs causing reduced braking efficiency and an accident.

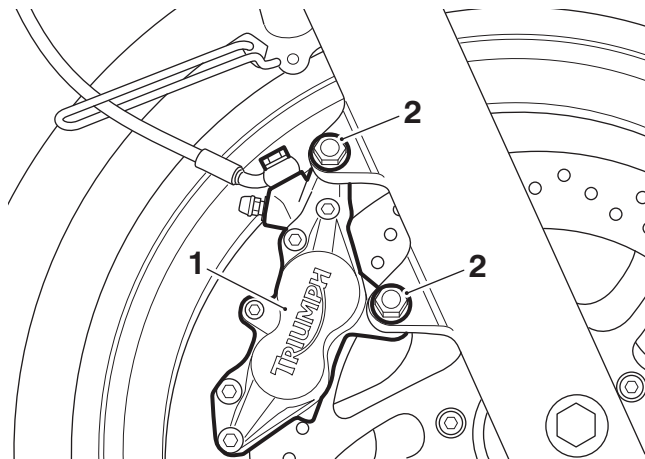
---

Install the front brake calipers as described in the Motorcycle Assembly Guide or Service Manual, noting the following:

- Prior to fitment, lubricate the threads of the caliper bolts using a minimum amount of proprietary high temperature copper-based grease.

**Note:**

- **The torque figure for the front caliper bolts has remained unchanged.**



1. Caliper (Thunderbird shown)
2. Bolts

**Please mark your copy of the Service Manual with this information.**

**Item 10.**

**Description:** Oxygen Sensor

**Models affected:** All Models

When refitting oxygen sensors to an exhaust system, always apply anti-seize compound to the threads of the oxygen sensors.

**Note:**

- **New oxygen sensors are supplied with the threads pre-coated with an anti-seize compound.**

When ordering replacement parts, always refer to the EPC.

**Please mark your copy of the Service Manual with this information.**

---

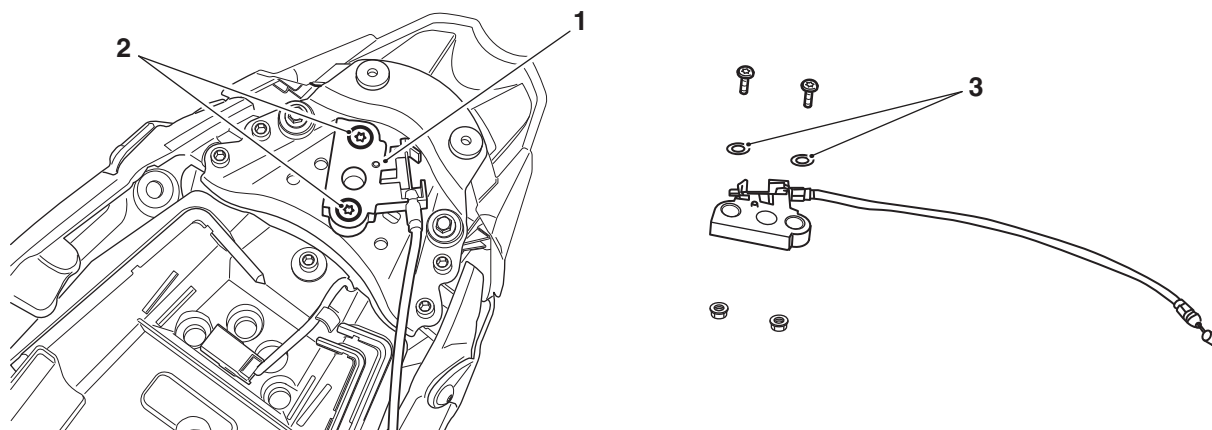
### Item 11.

**Description:**                    **Seat Latch Fixings**  
**Models affected:**            **Daytona 675 and Daytona 675R**

The torque figure for the seat latch fixings has changed to **5 Nm** on the above models.  
Washers have also been introduced to the seat latch fixings on the above models from VIN 718549.

**Note:**

- **Models already in service need not be retightened unless the fixings have been loosened or removed.**



1. Seat latch
2. Fixings
3. Washers

Please mark your copy of the Service Manual with this information.

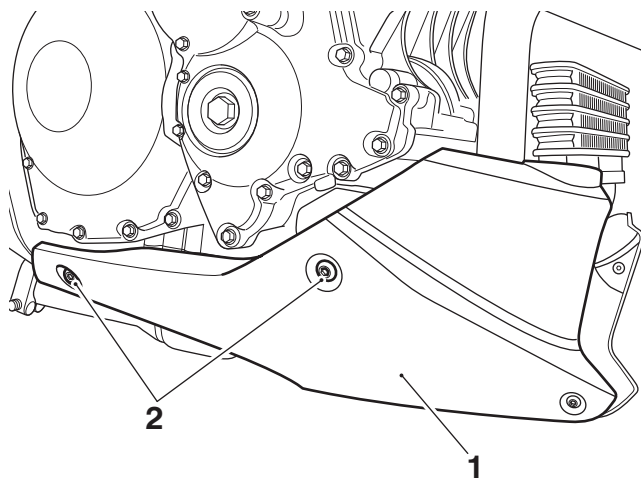
### Item 12.

**Description:**                    **Belly Pan Fixings**  
**Models affected:**            **All Speed Triple and Speed Triple R models from VIN 461332**

The torque figure for the belly pan fixings has changed to **10 Nm** on the above models.

**Note:**

- **Models already in service need not be retightened unless the fixings have been loosened or removed.**



cgmb\_2

1. Belly pan (right hand side shown, left hand side similar)
2. Fixings

Please mark your copy of the Service Manual with this information.



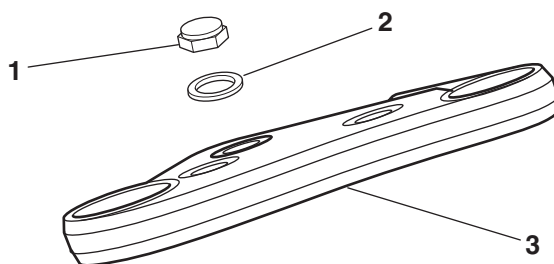
---

**Item 13.**

**Description:** Top Yoke Washer

**Models affected:** Thunderbird ABS and Thunderbird Storm ABS

A 3.2 mm thick washer has been introduced to the above models from VIN 724298 and is retrofittable. The washer is located between the yoke and the top cap. The torque figure for the top nut remains at **65 Nm**.



- 1. Top nut
- 2. Washer, 3.2 mm
- 3. Top yoke

Please mark your copy of the Service Manual with this information.

**Circulation**

Initial and date when read and return to central file holder

Service Manager	Parts Manager	Sales Manager	Workshop Supervisor	Technician 1	Technician 2

## Twist Grip Position Sensor 1 vs Twist Grip Position Sensor 2 Correlation Error

Fault Code	Possible cause	Action
P2138	Twist grip position sensor 1 correlation error with twist grip position sensor 2	View & note diagnostic tool 'freeze frame' data if available View & note diagnostic tool 'sensor' data Disconnect twist grip position sensor and proceed to pinpoint test 1:

### Pinpoint Tests

Test	Result	Action
1 Turn the ignition on and measure the Voltage between: - ECM pin B33 and ECM pin B19 - ECM pin B17 and ECM pin B35	5 V DC	Renew the twist grip sensor and proceed to test 2
	Faulty	Rectify fault, proceed to test 2
2 Reconnect harness, clear fault code and run engine to verify fault cleared	OK	Action complete - quit test
	Fault still present	Contact Triumph service

### Circuit Diagram

