



Preliminary Information

PIP5247A P06DE P0521 Low Oil Pressure Piston Oil Nozzle Squirter Parts Found In Oil Pan

Models

Brand:	Model:	Model Years:	VIN:		Engine:	Transmissions:
			from	to		
Buick	Envision	2015 - 2019	All	All	LCV LTG	All
Buick	LaCrosse	2015 - 2019	All	All	LHN	All
Buick	Regal	2014 - 2019	All	All	LTG	All
Cadillac	ATS	2013 - 2019	All	All	LCV LTG	All
Cadillac	CT6	2016 - 2018	All	All	LTG	All
Cadillac	CTS	2014 - 2019	All	All	LTG	All
Chevrolet	Blazer	2019	All	All	LCV	All
Chevrolet	Camaro	2016 - 2019	All	All	LTG	All
Chevrolet	Colorado	2015 - 2019	All	All	LCV	All
Chevrolet	Equinox	2019	All	All	LTG	All
Chevrolet	Impala	2013 - 2019	All	All	LCV LKW	All
Chevrolet	Malibu	2013 - 2019	All	All	LCV LKW LTG	All
Chevrolet	Traverse	2017 - 2019	All	All	LTG	All
GMC	Acadia	2016 - 2019	All	All	LCV	All
GMC	Canyon	2015 - 2019	All	All	LCV	All
GMC	Terrain	2017 - 2019	All	All	LTG	All

Supersession Statement

This PI was superseded to update Models and Model Years. Please discard PIP5247.

The following diagnosis might be helpful if the vehicle exhibits the symptom(s) described in this PI.

Condition / Concern

Some customers may have a complaint of SES lamp illumination. The technician may find DTC P06DE in the ECM. P0651 may also be set in the ECM with the P06DE.

Recommendations / Instructions

Follow SI diagnostics for trouble code P06DE.

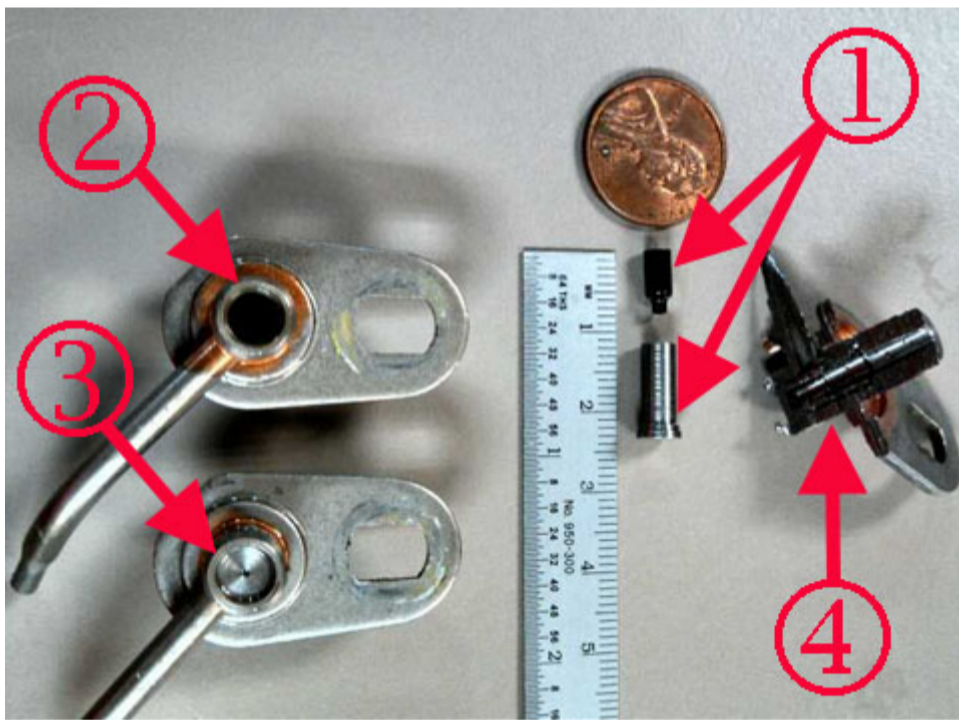
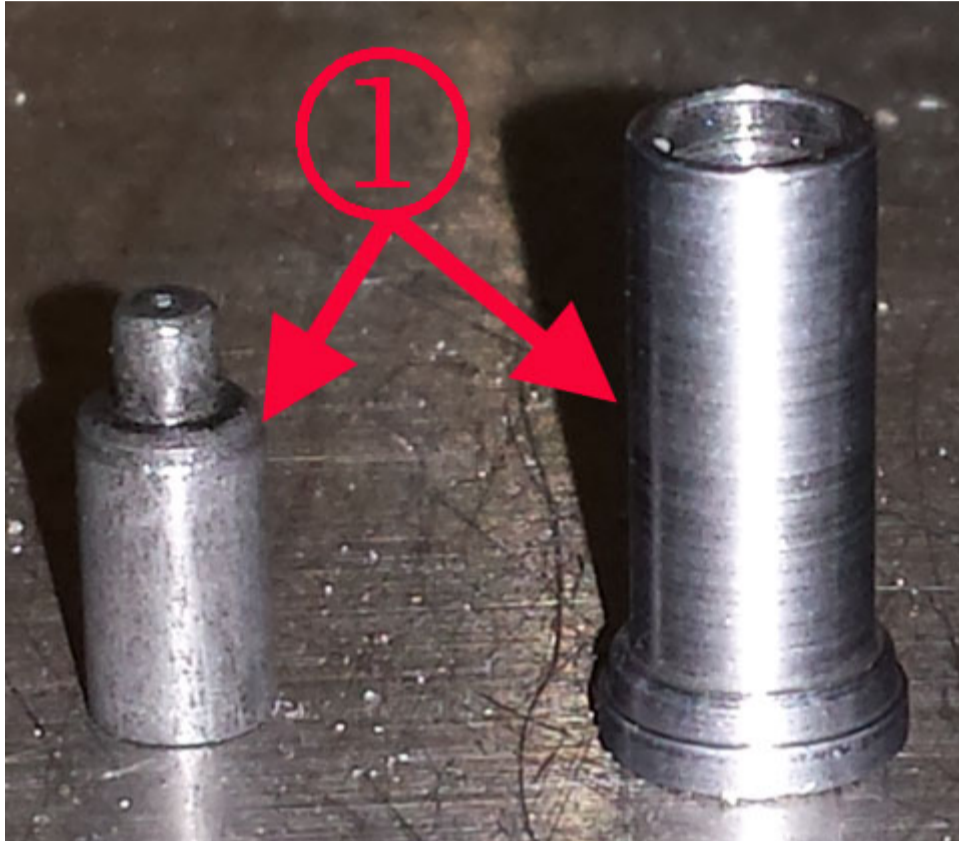
If diagnostics lead to removing the oil pan or engine oil pressure is below specification when hot, inspect the oil piston nozzles / squirters for damage.

The balance shaft oil pump module must be removed to perform the inspection.

Technician may also find objects in the oil pan / bottom end of the engine and /or in the oil pick up tube.

If the objects match the pictures below, they are internal components from a broken piston oil nozzle / squirter.

Replace the broken oil nozzle(s) / squirter(s) as long as the engine does not have any damage which warrants engine replacement.



- 1 - Internal parts of a piston oil nozzle / squirter
- 2 - Damaged piston oil nozzle / squirter where internal parts came from
- 3 - Undamaged piston oil nozzle / squirter
- 4 - Cross section view of a piston oil nozzle / squirter

Please follow this diagnostic or repair process thoroughly and complete each step. If the condition exhibited is resolved without completing every step, the remaining steps do not need to be performed.



GENERAL MOTORS

© 2021 General Motors. All Rights Reserved.