



**NUMBER:** 23-014-21

**GROUP:** 23 - Body

**DATE:** April 13, 2021

*This bulletin is supplied as technical information only and is not an authorization for repair. No part of this publication may be reproduced, stored in a retrieval system, or transmitted, in any form or by any means, electronic, mechanical, photocopying, or otherwise, without written permission of FCA US LLC.*

**SUBJECT:**

Soft Top Wear Due To Contact With Number Two Bow Side Frame Link

**OVERVIEW:**

This bulletin includes inspecting the soft top in the closed position for wear or holes and applying anti-wear tape.

**MODELS:**

2018 - 2021 (JL) Jeep Wrangler

**NOTE:** This bulletin applies to vehicles within the following markets/countries: North America.

**NOTE:** This bulletin applies to vehicles built on or before September 01, 2020 (MDH 0901XX) equipped with a Black Sunrider Soft Top (Sales Code STA), Premium Black Sunrider Soft Top (Sales Code STB), Premium Tan Sunrider Soft Top (Sales Code STC), Black Sunrider Soft Top (Sales Code ST1), Premium Black Sunrider Soft Top (Sales Code ST2) or a Premium Tan Sunrider Soft Top (Sales Code ST3).

**SYMPTOM/CONDITION:**

Customers may comment on one or more of the following:

- Wear on soft top cover.
- A hole in soft top cover.

**PARTS REQUIRED:**

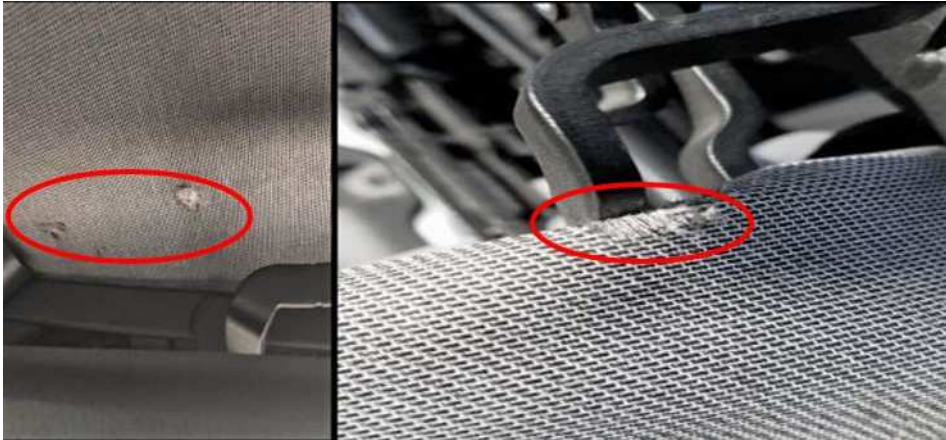
Qty.	Part No.	Description
(AR)	68546348AA	Anti-Wear Tape

**DIAGNOSIS:**

If the customer describes the symptom/condition listed above, perform the Repair Procedure.

**REPAIR PROCEDURE:**

1. Visually inspect both the left and right sides of the soft top and soft top cover fabric, when the top is used or stored in the Sunrider position, for contact with the **number two bow** frame for wear and or holes.
2. Was any wear on the cover fabric noticed (Fig. 1) ?
  - YES>>> Proceed to [Step 3](#).
  - NO>>> This bulletin does not apply. Normal diagnosis should be performed.

**Fig. 1****Example Holes And Wear In Cover Fabric**

3. Using an alcohol wipe or equivalent, clean both the left and right side frame links (Fig. 2) and allow it to air dry.
4. Apply anti-wear tape to both the left and right side frame links (Fig. 2) .

**Fig. 2****Frame Side Link To Clean And Apply Tape**

**POLICY:**

Reimbursable within the provisions of the warranty.

**TIME ALLOWANCE:**

<b>Labor Operation No:</b>	<b>Description</b>	<b>Skill Category</b>	<b>Amount</b>
23-05-01-9H	Soft Top Cover Fabric - Inspect and Apply Tape, Both Sides (2 - Skilled)	6 - Electrical and Body Systems	0.3 Hrs.

**FAILURE CODE:**

ZZ	Service Action
----	----------------