

Noise Symptom/Jerking or Spare Parts Requirements - Clicking Noise/Rough-Running Engine/Jerking Under Load With Respect to Transfer Gear: Programming All-Wheel Drive Control Unit/Checking Transfer Gear (SY 84/17)



Information

These symptom-based repair instructions replace the instructions dated September 22, 2017.

Changes/additions:

Only modified transfer gears with GNC-coated plates are supplied from now on.

⇒ In the event of **spare parts requirements for the control unit** (contained in the servo motor), the **existing type of transfer gear (with or without GNC-coated plates)** must be checked and the **part number of the control unit must be selected accordingly.**

⇒ A **transfer gear with GNC-coated plates** is identified by the **PR number "LU2"**.

⇒ For more information, see also **"Spare parts requirements"** and **"Software"**.



Information

Currently, **a high percentage of warranty returned transfer cases are evaluated as "OK" during testing by the supplier.**

For this reason, **the two previous symptom-based repair instructions** are being replaced by these symptom-based repair instructions:

1. ⇒ "Eliminating noise symptoms - Re-programming control unit for all-wheel drive (Creaking noise from around the transfer case/SY0416) – ⇒ only relevant for vehicles from model year 2015 to 2016 and

2. ⇒ "Eliminating symptoms - Engine: Replacing transfer case (Rough-running engine, vehicle jerks under load/SY2516)

in Repair Group 39 - Final drive.



Information

The "transfer case" is designed as an active all-wheel drive system that is dynamically adapted to the respective driving state.

Power transmission between the front and rear axle **is controlled electronically via the "all-wheel drive servo motor (transfer case)"** and the **multi-plate clutches integrated in the transfer case.**

⇒ **On all-wheel drive vehicles, the drive train can become strained** at low speeds and when the steering is turned sharply **when "Off-road mode" is activated, depending on design.**

- **Under extreme conditions**, the drive train can also become strained **when "Off-road mode" is deactivated.**
- **Customers** with little experience with all-wheel drive vehicles **can interpret this behavior as a fault**, which in turn can **result in incorrect diagnoses** in the workshop.

Change overview

Version	Date	Change
0	2017	<ul style="list-style-type: none"> First publication
1	November 2, 2017	<ul style="list-style-type: none"> The Information note under "Symptom 1", the first bullet point was amended to read: "that were produced from model year 2015 to model year 2016 and"
2	February 6, 2018	<ul style="list-style-type: none"> Under Symptom 2—Step 2.4 was added.
3	February 18, 2019	<ul style="list-style-type: none"> Under Symptom 2—Work Procedure—The Notice after Step 2, first sentence was changed to The following software update via 'Programming Code' may not be used on vehicles before model year 2015.
4	May 29, 2021	<ul style="list-style-type: none"> Part numbers added

Vehicle Type: **Cayenne (VR6 - 92A)/Cayenne S (92A)/Cayenne GTS (92A)/Cayenne Turbo (92A)/Cayenne Turbo S (92A)/Cayenne S Diesel (V8 - 92A)**

Model Year: **As of 2011 up to 2017**

Equipment: With **Hang-on** transfer gear

Differentiation:



Information

Determine **type of transmission** or the software – Transmission has **vaness without GNC coating or with GNC coating**:

Overview of **required software versions in the control unit and the corresponding servo motor part number**.

	Transmission without GNC (coating): up to December 31, 2020	Transmission without GNC (coating): from January 1, 2021	Transmission with GNC (coating): up to December 31, 2020	Transmission with GNC (coating): from January 1, 2021
E2 I vehicles up to model year 2014:	Software version: 0947 Part No. of control unit software (can be read out using the PIWIS Tester): 0C2927755K Related Porsche Part No. of control unit hardware (servo motor in the PET): 958.618.755.09	Software version: 0948 Part No. of control unit software (can be read out using the PIWIS Tester): 0C2927755AD Related Porsche Part No. of control unit hardware (servo motor in the PET): 958.618.755.D	Software version: 1150 Part No. of control unit software (can be read out using the PIWIS Tester): 0C2927755T Related Porsche Part No. of control unit hardware (servo motor in the PET): 958.927.755	Software version: 1151 Part No. of control unit software (can be read out using the PIWIS Tester): 0C2927755AB Related Porsche Part No. of control unit hardware (servo motor in the PET): 958.927.755.B
E2 I up to model year 2014 Cayenne S Diesel	Software version: 0947 Part No. of control unit software (can be read out using the PIWIS Tester): 0C2927755K Related Porsche Part No. of control unit hardware (servo motor in the PET): 958.618.755.09	Software version: 0948 Part No. of control unit software (can be read out using the PIWIS Tester): 0C2927755AD Related Porsche Part No. of control unit hardware (servo motor in the PET): 7P5.927.769. B	Software version: 1150 Part No. of control unit software (can be read out using the PIWIS Tester): 0C2927755T Related Porsche Part No. of control unit hardware (servo motor in the PET): 958.927.755	Software version: 1151 Part No. of control unit software (can be read out using the PIWIS Tester): 0C2927755AB Related Porsche Part No. of control unit hardware (servo motor in the PET): 7P5.927.769
			PR number: (PIWIS Tester: Diagnostics ⇒ Vehicle order •F7" Additional menu ⇒ Maintenance of vehicle data ⇒ Transfer gear differentiation)	PR number: (PIWIS Tester: Diagnostics ⇒ Vehicle order •F7" Additional menu ⇒ Maintenance of vehicle data ⇒ Transfer gear differentiation)

			⇒ The PR number must be updated manually to the new version with GNC plates if the transfer gear is replaced. LU2 – Transfer gear reinforced	⇒ The PR number must be updated manually to the new version with GNC plates if the transfer gear is replaced. LU2 – Transfer gear reinforced
E2 II vehicles from model year 2015:	Software version: 1010 Part No. of control unit software (can be read out using the PIWIS Tester): OC2927755 S Related Porsche Part No. of control unit hardware (servo motor in the PET): 958.618.755.12	Software version: 1012 Part No. of control unit software (can be read out using the PIWIS Tester): OC2927755 AE Related Porsche Part No. of control unit hardware (servo motor in the PET): 958.618.755. E	Software version: 1150 Part No. of control unit software (can be read out using the PIWIS Tester): OC2927755 AA Related Porsche Part No. of control unit hardware (servo motor in the PET): 958. 927 .755. A	Software version: 1151 Part No. of control unit software (can be read out using the PIWIS Tester): OC2927755 AC Related Porsche Part No. of control unit hardware (servo motor in the PET): 958. 927 .755. C
E2 II from model year 2015 Cayenne S Diesel	Software version: 1010 Part No. of control unit software (can be read out using the PIWIS Tester): OC2927755 S Related Porsche Part No. of control unit hardware (servo motor in the PET): 958.618.755.12	Software version: 1012 Part No. of control unit software (can be read out using the PIWIS Tester): OC2927755 AE Related Porsche Part No. of control unit hardware (servo motor in the PET): 7P5.927.769.C	Software version: 1150 Part No. of control unit software (can be read out using the PIWIS Tester): OC2927755 AA Related Porsche Part No. of control unit hardware (servo motor in the PET): 958. 927 .755. A	Software version: 1151 Part No. of control unit software (can be read out using the PIWIS Tester): OC2927755 AC Related Porsche Part No. of control unit hardware (servo motor in the PET): 7P5.927.769.A
			PR number: (PIWIS Tester: Diagnostics ⇒ Vehicle order •F7" Additional menu	PR number: (PIWIS Tester: Diagnostics ⇒ Vehicle order •F7" Additional menu

	<p>⇒ Maintenance of vehicle data ⇒ Transfer gear differentiation)</p> <p>⇒ The PR number must be updated manually to the new version with GNC plates if the transfer gear is replaced.</p> <p>LU2 – Transfer gear reinforced</p>	<p>⇒ Maintenance of vehicle data ⇒ Transfer gear differentiation)</p> <p>⇒ The PR number must be updated manually to the new version with GNC plates if the transfer gear is replaced.</p> <p>LU2 – Transfer gear reinforced</p>
--	--	--

Spare parts requirements:



Information

- If the transfer case with servo motor (control unit) is replaced, there is no need to reload data (classification data).
- This data is already contained in the control unit for servo motor and transmission bundle replacement.
- Classification data can be read out of the control unit using the PIWIS Tester (see "Actual values" tab)
- If only the servo motor is replaced, the classification data must be re-written into the control unit.
- Classification data can be found on the transfer case housing.

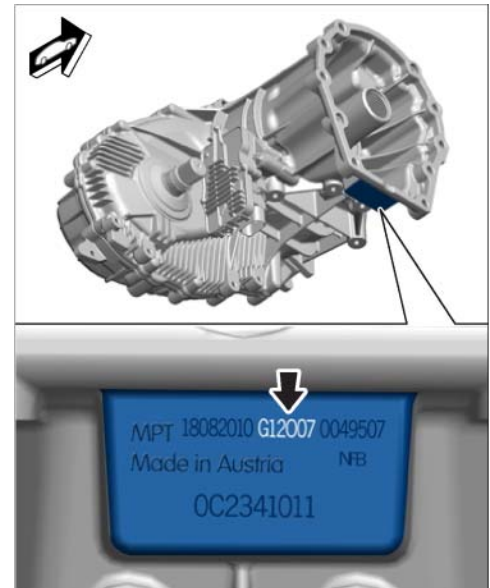
Only valid for model year 2011 - 2012:

⇒ *Technical Information '391300 All-wheel drive control unit needs to be replaced: Missing offset and gradient values on the transfer gear (66/11)'*

**Information**

The customer complaint about a clicking noise (from the servo motor) can only occur on vehicles:

- that were **produced from model year 2015 to model year 2016** and
- with a **software version lower than version 1010 in the all-wheel drive control unit.**



Classification data for transfer case

Subject:	All-wheel drive servo motor (transfer gear)
Symptom	Clicking noises can come from around the transfer gear when driving slowly or when manoeuvring in a yard or car park.
Cause:	Clicking noises can come from around the transfer gear when manoeuvring the vehicle (or driving slowly) due to activation of the transfer gear servo motor.
Remedial Action:	<p>Before doing any other work, the symptom must be simulated using a test procedure: (Opening the door windows can be helpful when evaluating noises).</p> <p>1 Conditions for this test procedure:</p> <ul style="list-style-type: none"> • Activate the Start/Stop function and • deactivate all sources of noise in the vehicle (Entertainment, ventilation, etc.). • A multi-storey car park can be useful for acoustic reverberation. <p>2 Procedure:</p> <ul style="list-style-type: none"> • On a straight stretch • from speeds less than 20 km/h (10 mph) • brake the vehicle to a standstill. • The best way of finding the clicking noise is by driving slowly and then stopping the vehicle. <p>⇒ In the event of a distinct customer complaint, the clicking noise can already be heard on a straight stretch with partial load accelerations.</p>

⇒ To **correct the problem, re-program the all-wheel drive control unit**, see 'Procedure' section below (Link to Procedure module must still be added!).

The measure is complete after programming the all-wheel drive control unit.



Information

The procedure described here is based on the PIWIS Tester III software version **35.800**.

The PIWIS Tester instructions take precedence and in the event of a discrepancy, these are the instructions that must be followed.

A discrepancy may arise with later software versions for example.



Information

The description below contains the text 'With regard to **2**'; 'Symptom **2**', etc.

⇒ However, 'With regard to **1**'; 'Symptom **1**', etc. is relevant **only for model years 2015 and 2016**.

⇒ **The description for '1' is not relevant for other model years.**

With regard to **2**: **Hang-on transfer gear** ⇒ see "**Symptom 2**" below

Symptom 2: **Symptoms to be checked:**

- Rough-running engine or
- the vehicle vibrates or
- the engine jerks under load.



Information

Generally, the vehicle can start jerking when driving in tight corners with a small radius and when Off-road mode is activated.

This behavior is perfectly normal for all-wheel drive vehicles and is not a defect on the vehicle.

NOTICE

Driving with connectors on chassis components or control units disconnected.

- **Bearings in transfer case can be damaged.**
- ⇒ **Drive vehicle only at a maximum speed of 30 mph (50 km/h).**
- ⇒ **Do not drive vehicle in the upper load range or at full throttle.**
- ⇒ **During Diagnosis of a vibration, a defective front axle shaft can cause a vibration and is masked when the Transfer case is disconnected as torque is no longer applied to the front drive system in the same manner.**

1 Carry out the test procedure under the following **conditions**:

- On a **straight stretch**
- from **speeds less than 20 km/h** (10 mph)
- accelerate the vehicle in the partial load range.

During this test procedure, if:

- **jerking can be felt**, the test procedure under ⇒ (below) must also be carried out in order to determine the exact cause.
- **no jerking is felt**, see the information below about normal vehicle behavior:



Information

Generally, the vehicle can start jerking when driving in tight corners with a small radius and when Off-road mode is activated.

This behavior is perfectly normal for all-wheel drive vehicles and is not a defect on the vehicle.

2 Depending on equipment:

- **with PTV PLUS** (controlled rear-differential lock) – I-no. 1Y1 ⇒ continue with ⇒ 2.1
- **without front/rear differential lock** – I-no. 1Y0 ⇒ continue with 3.1



Information

Generally, the vehicle can start jerking when driving in tight corners with a small radius and when Off-road mode is activated.

This behavior is perfectly normal for all-wheel drive vehicles and is not a defect on the vehicle.

2.1 Disconnect connector on the rear-differential lock control unit, see ⇒ *Workshop Manual '397519 Removing and installing control unit for rear-differential lock'*.

2.2 Carry out the test procedure under the following conditions, see ⇒ :

⇒ Disconnecting the connector should prevent the vehicle from jerking due to a higher rear-differential lock locking value:

⇒ If the **problem occurs**, continue with 2.3.

⇒ If the **problem no longer occurs**, the **rear final drive must be replaced**, see ⇒ *Workshop Manual '398819 Removing and installing all-wheel final drive'* and



Information

⇒ For **model year 2011 to 2013 vehicles**, the steps described in the following campaign must also be performed:

⇒ *Technical Information 'WC2600 WC26 Workshop campaign - Re-programming rear-differential lock control unit'*.

- 2.3 Re-connect connector on the rear-differential lock control unit, see ⇒ *Workshop Manual '397519 Removing and installing control unit for rear-differential lock'*.
- 3 If jerking is felt during the test procedure under step ⇒, **the following test procedure must still be carried out**, see ⇒ 3.1 to ⇒ 3.3:
- 3.1 **Disconnect connector on center differential lock** (plug connection on transfer gear servo motor).
- Connector on rear-differential lock control unit must be inserted.
- 3.2 Carry out the test procedure under the following conditions:
- On a **straight stretch**
 - from **speeds less than 20 km/h** (10 mph)
 - accelerate the vehicle in the partial load range.
- ⇒ **If the problem occurs, the transfer gear or rear final drive must be ruled out as the cause.**
- ⇒ **Avoid replacing these components.**
- ⇒ If the **problem no longer occurs, the hang-on transfer gear must be replaced**, see ⇒ *Workshop Manual '396519 Removing and installing transfer gear'*.
- 3.3 Re-connect connector on center differential lock.
- End** of action required.

NOTICE

The following software update via 'Programming Code' may not be used on vehicles before model year 2015.

- Malfunctions in the system
- ⇒ Use the software update via "programming code" only for model year 2015 to 2016 vehicles.

- Tools:
- **9900 - PIWIS Tester 3** with PIWIS Tester software version **35.800** (or higher) installed
 - Battery charger with a current rating of **at least 90 A**, e.g. **VAS 5908 battery charger 90A**

NOTICE

Fault entry in the fault memory and control unit programming aborted due to low voltage.

- **Increased current draw during diagnosis or control unit programming can cause a drop in voltage, which can result in one or more fault entries and the abnormal termination of the programming process.**
- ⇒ **Before starting control unit programming, connect a battery charger or power supply, suitable for AGM type batteries, recommended current rating of 90A fixed voltage 13.5V to 14.5V.**

NOTICE

Control unit programming will be aborted if the Internet connection is unstable.

- An unstable Internet connection can interrupt communication between PIWIS Tester and the vehicle communication module (VCI). As a result, control unit programming may be aborted.
- ⇒ During control unit programming, always connect PIWIS Tester to the vehicle communication module (VCI) via the USB cable.

NOTICE

Control unit programming will be aborted if the vehicle key is not recognized

- If the vehicle key is not recognized in vehicles with Porsche Entry & Drive, programming cannot be started or will be interrupted.
- ⇒ Switch on the ignition using the original vehicle key. To do this, replace the original vehicle key in the ignition lock with the plastic key fob if it was previously removed at the start of this procedure.

Work Procedure: 1 **Preliminary work**

Carry out general preliminary work for control unit programming as described in ⇒ *Workshop Manual '9X00IN Basic instructions and procedure for control unit programming using the PIWIS Tester - section on "Preliminary work"*.

2 **Re-program all-wheel drive control unit.**

The basic procedure for programming a control unit is described in the Workshop Manual ⇒ *Workshop Manual '9X00IN Basic instructions and procedure for control unit programming using the PIWIS Tester - section on "Programming"*

For specific information on control unit programming during this campaign, see table below.

Required PIWIS Tester software version:	35.800 (or higher)
Type of control unit programming:	Control unit programming using the " Campaign " function in the Additional menu on the PIWIS Tester by entering a programming code.
Programming code:	G5N7B

Programming sequence:	<p>Read and follow the information and instructions on the PIWIS Tester during the guided programming sequence.</p> <p>The fault memory is first deleted during the programming sequence. If the message appears informing you that certain fault memory entries could not be deleted, acknowledge the message by pressing •>>“ and start control unit programming. During programming, the all-wheel drive control unit will be re-programmed and then re-coded automatically.</p> <p>Do not interrupt programming and coding.</p> <p>Once the control units have been programmed and coded, the PIWIS Tester will prompt you to switch the ignition off and then back on again after a waiting time of approx. 10 seconds.</p>
Programming time (approx):	2 minutes
Data record programmed during this campaign (software part number):	<p>0C2.927.xxx.S</p> <p>Following control unit programming, the Porsche part number can be read out of the 'All-wheel drive' control unit in the ⇒ 'Extended identification' menu using the PIWIS Tester.</p>
Procedure in the event of error messages appearing during the programming sequence:	⇒ <i>Workshop Manual '9X00IN Basic instructions and procedure for control unit programming using the PIWIS Tester - section on "Fault finding"</i> .
Procedure in the event of abnormal termination of control unit programming:	<p>Repeat control unit programming by restarting programming.</p> <p>If this is not possible, restart the PIWIS Tester and then execute control unit programming again.</p>

3 Subsequent work

- 3.1 Create a Vehicle Analysis Log (VAL) and mark it with the attribute "Following repairs". ⇒ *Workshop Manual '9X00IN Creating Vehicle Analysis Log (VAL)'*
- 3.2 Carry out general subsequent work for control unit programming as described in ⇒ *Workshop Manual '9X00IN Basic instructions and procedure for control unit programming using the PIWIS Tester - section on "Subsequent work"*.

Invoicing:

**Information**

Labor operations for standard measures and standard repairs are not listed here.

These standard labor operations must be used in accordance with the Labor Operation List.

Only for model year 2015 to 2016 vehicles: The work involved is invoiced under the labor operation:

APOS	Labor operation	I No.
39952500	Programming all-wheel drive control unit	

For invoicing and documentation using PQIS, enter the following coding, depending on the customer complaint:

a) "Creaking noise" (clicking noise):

Location (FES5)	39780	Transfer gear servo motor
Damage type (SA4)	2015	creaking

b) "Rough-running engine, vehicle vibrates or engine jerks under load":

Location (FES5)	39650	Transfer gear
Damage type (SA4)	1313	vibrating, shaking

- References:
- ⇒ *Workshop Manual '9X00IN Creating Vehicle Analysis Log (VAL)'*
 - ⇒ *Workshop Manual '9X00IN Basic instructions and procedure for control unit programming using the PIWIS Tester - section on "Subsequent work"*
 - ⇒ *Workshop Manual '397519 Removing and installing control unit for rear-differential lock'*
 - ⇒ *Workshop Manual '396519 Removing and installing transfer gear'*

Important Notice: Technical Bulletins issued by Porsche Cars North America, Inc. are intended only for use by professional automotive technicians who have attended Porsche service training courses. They are written to inform those technicians of conditions that may occur on some Porsche vehicles, or to provide information that could assist in the proper servicing of a vehicle. Porsche special tools may be necessary in order to perform certain operations identified in these bulletins. Use of tools and procedures other than those Porsche recommends in these bulletins may be detrimental to the safe operation of your vehicle, and may endanger the people working on it. Properly trained Porsche technicians have the equipment, tools, safety instructions, and know-how to do the job properly and safely. Part numbers listed in these bulletins are for reference only. The work procedures updated electronically in the Porsche PIWIS diagnostic and testing device take precedence and, in the event of a discrepancy, the work procedures in the PIWIS Tester are the ones that must be followed.

© 2021 Porsche Cars North America, Inc.