



SERVICE BULLETIN

Classification: DA21-003	Reference: NTB21-040	Date: May 20, 2021
-----------------------------	-------------------------	-----------------------

2021 ROGUE; DTCS B2740-87, B2744-87, AND/OR B274D-87 STORED

APPLIED VEHICLE: 2021 Rogue (T33)

IF YOU CONFIRM

Any of the following DTCs are stored:

- B2740-87 (TCU)
- B2744-87 (BCM)
- B274D-87 (Combination Meter)

ACTION

Reprogram the Sonar Control Unit, if applicable.

IMPORTANT: The purpose of ACTION (above) is to give you a quick idea of the work you will be performing. You **MUST** closely follow the entire SERVICE PROCEDURE as it contains information that is essential to successfully completing this repair.

Nissan Bulletins are intended for use by qualified technicians, not 'do-it-yourselfers'. Qualified technicians are properly trained individuals who have the equipment, tools, safety instruction, and know-how to do a job properly and safely. **NOTE:** If you believe that a described condition may apply to a particular vehicle, DO NOT assume that it does. See your Nissan dealer to determine if this applies to your vehicle.

SERVICE PROCEDURE

Sonar Control Unit Reprogramming

IMPORTANT: Before starting, make sure:

- ASSIST on the CONSULT PC has been synchronized (updated) to the current date.
- All C-III plus software updates (if any) have been installed.
- The CONSULT PC is connected to the internet via a cable or Wi-Fi.
 - Later in the procedure you will be required to enter your username and password.
 - The CONSULT PC must be connected to the internet.
 - If you do not know your username and password, contact your service manager.
- A screen print for warranty documentation can be done from the C-III plus during this service procedure while still connected to the vehicle.
- No Diagnostic Trouble Codes (DTCs) are stored.
 - Use C-III plus to perform Self Diagnosis for all systems.
 - If there are any DTCs, other than **B2740-87**, **B2744-87** and/or **B274D-87**, diagnose, perform repairs, and erase DTCs **before** continuing.

1. Connect the VI to the vehicle.

NOTICE

Make sure the VI is securely connected. If the VI connection is loose during reprogramming, the process will be interrupted and the control unit may be damaged.

2. Connect the AC Adapter to the CONSULT PC.

NOTICE

Be sure to connect the AC Adapter. If the CONSULT PC battery voltage drops during reprogramming, the process will be interrupted and the control unit may be damaged.

3. Connect a battery maintainer/smart charger set to reflash mode or a similar setting.

NOTICE

To avoid damage to the control unit, ensure a battery maintainer or smart charger is connected. The battery voltage must be between 12.0V and 15.5V during reprogramming.

4. Turn OFF all external Bluetooth® devices (e.g., cell phones, printers, etc.) within range of the CONSULT PC and VI.

NOTICE

Make sure to turn OFF all external Bluetooth® devices. If Bluetooth® signal waves are within range of the CONSULT PC and the VI during reprogramming, reprogramming may be interrupted and the control unit may be damaged.

5. Turn the ignition ON with the engine OFF.

NOTICE

To avoid damage to the control unit, the engine must not start or run during the reprogramming procedure.

6. Turn OFF all vehicle electrical loads such as exterior lights, interior lights, HVAC, blower, rear defogger, audio, NAVI, seat heater, steering wheel heater, etc.
7. Turn ON the hazard warning lamps.
8. Turn ON the CONSULT PC.
9. Start C-III plus.
 - The serial number will display when the VI is recognized.

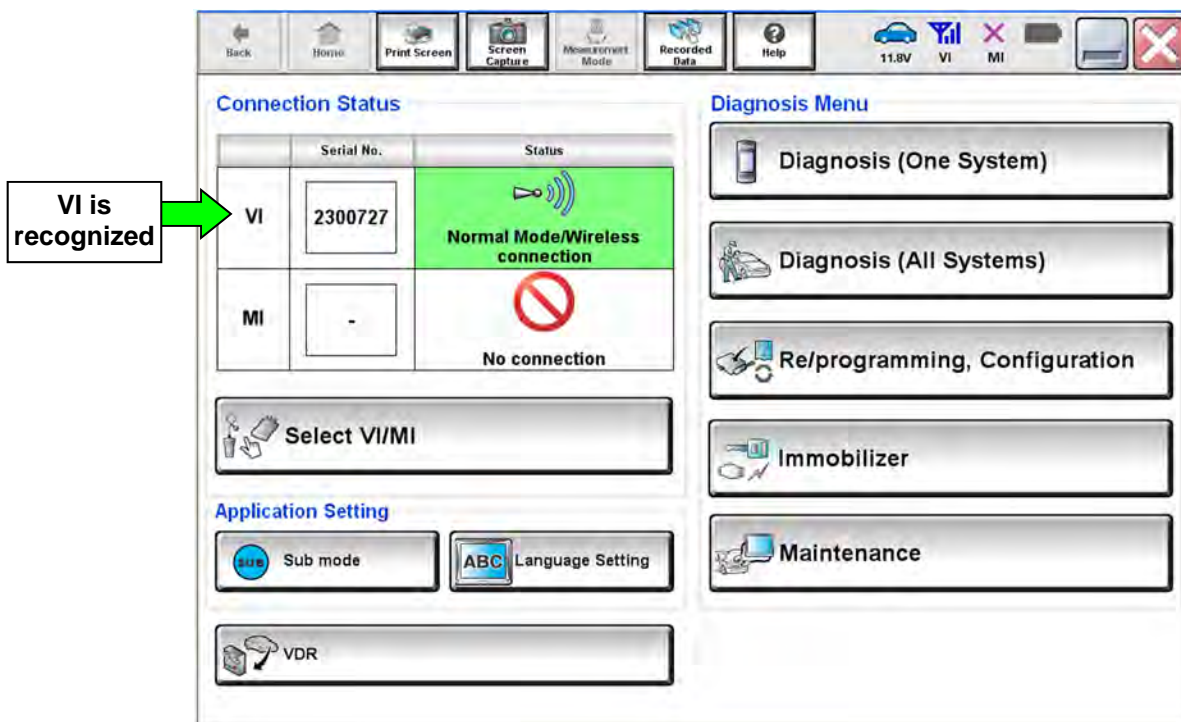


Figure 1

10. Select **Diagnosis (One System)**.

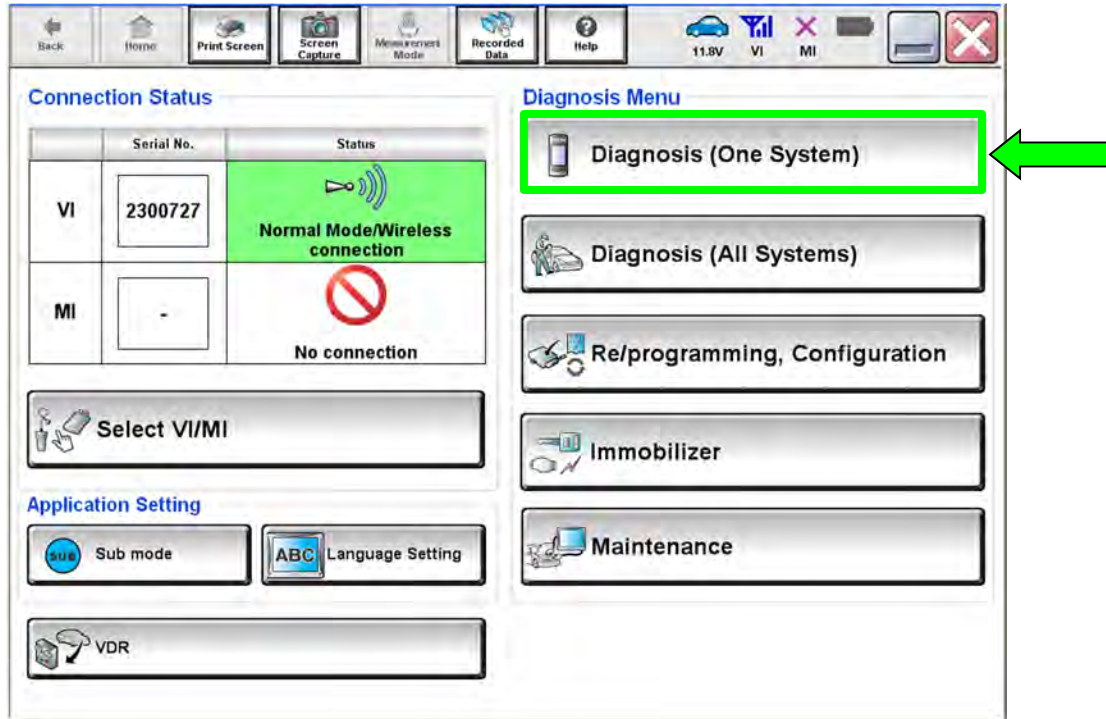


Figure 2

11. Select **SONAR**.

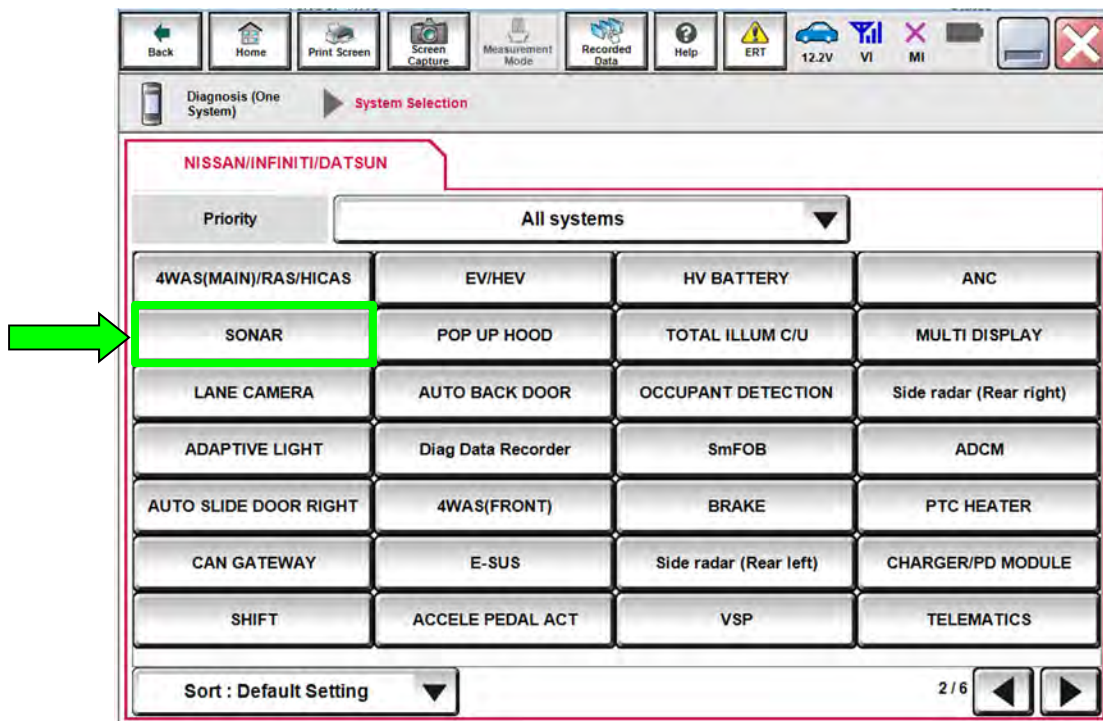


Figure 3

12. Select **ECU Identification**.

- If the **ECU PART NUMBER** is 284S9-1517R, this bulletin does not apply. See the Electronic Service Manual (ESM) for further diagnostic information.
- If the the **ECU PART NUMBER** is not 284S9-1517R, proceed to step 13.

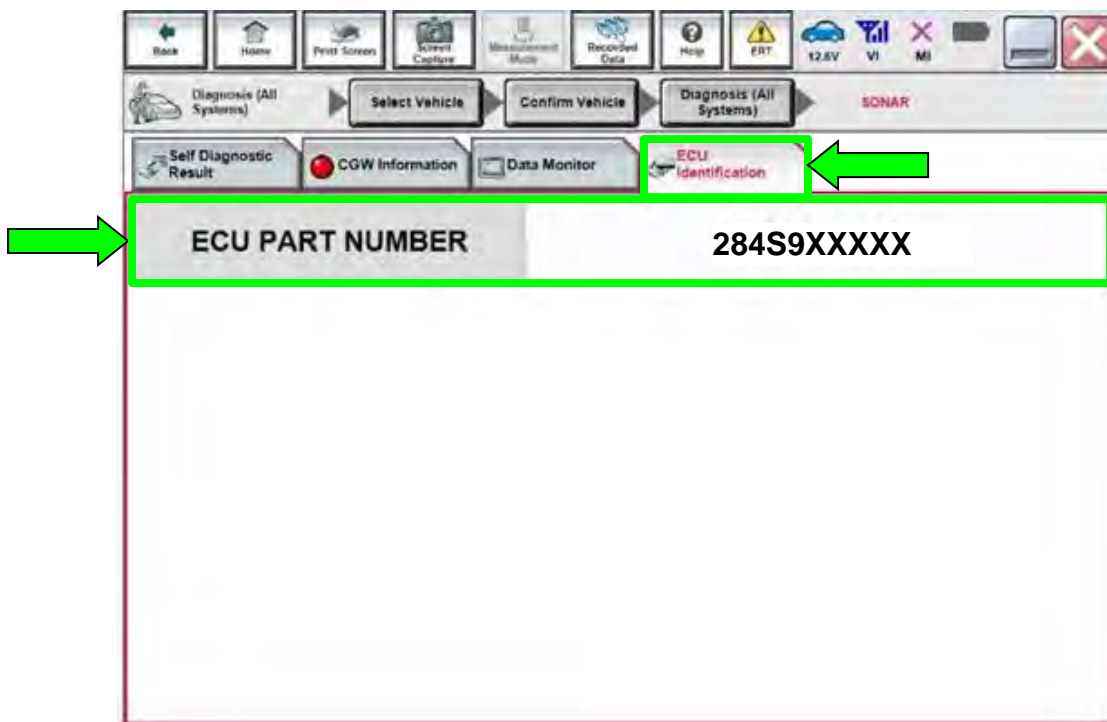


Figure 4

13. Select **Home**.

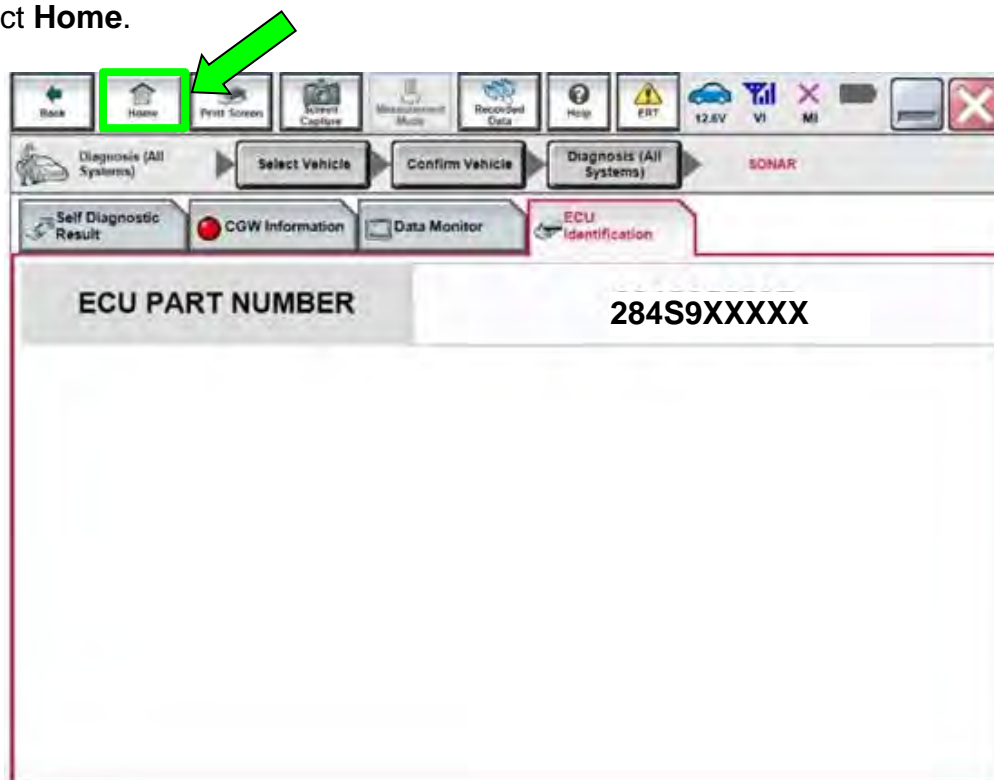


Figure 5

14. Select **Re/programming, Configuration**.

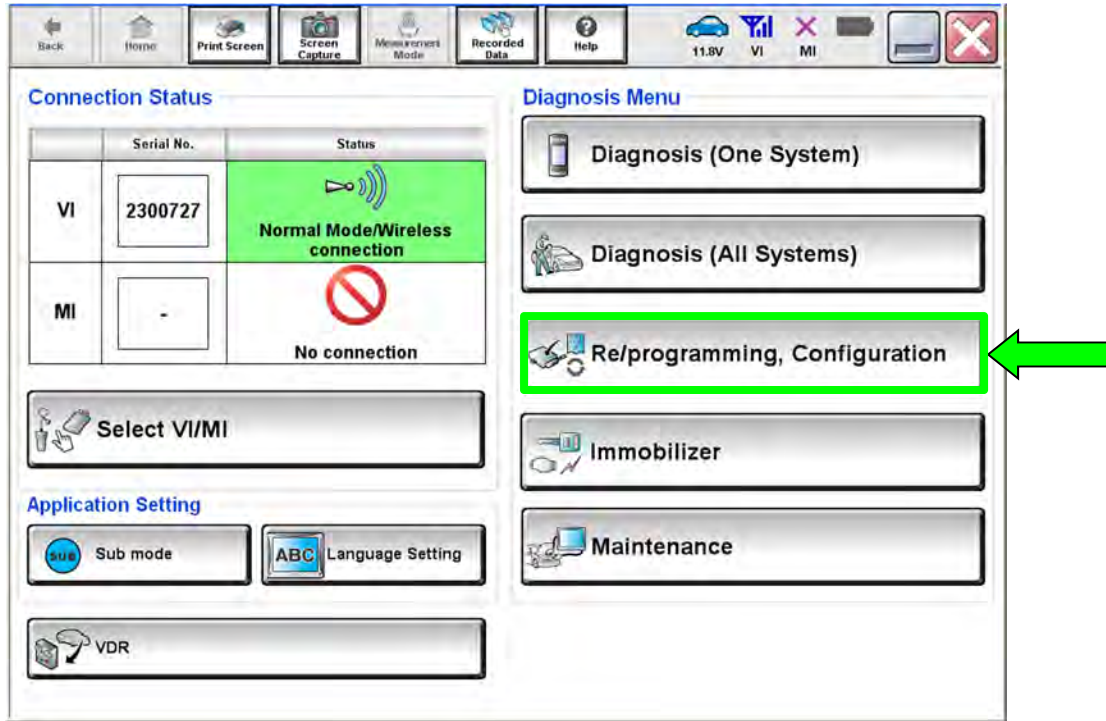


Figure 6

15. Check the box to confirm the precaution instructions have been read, and then select **Next**.

NOTE: Use the arrows (if needed) to view and read all the precautions.

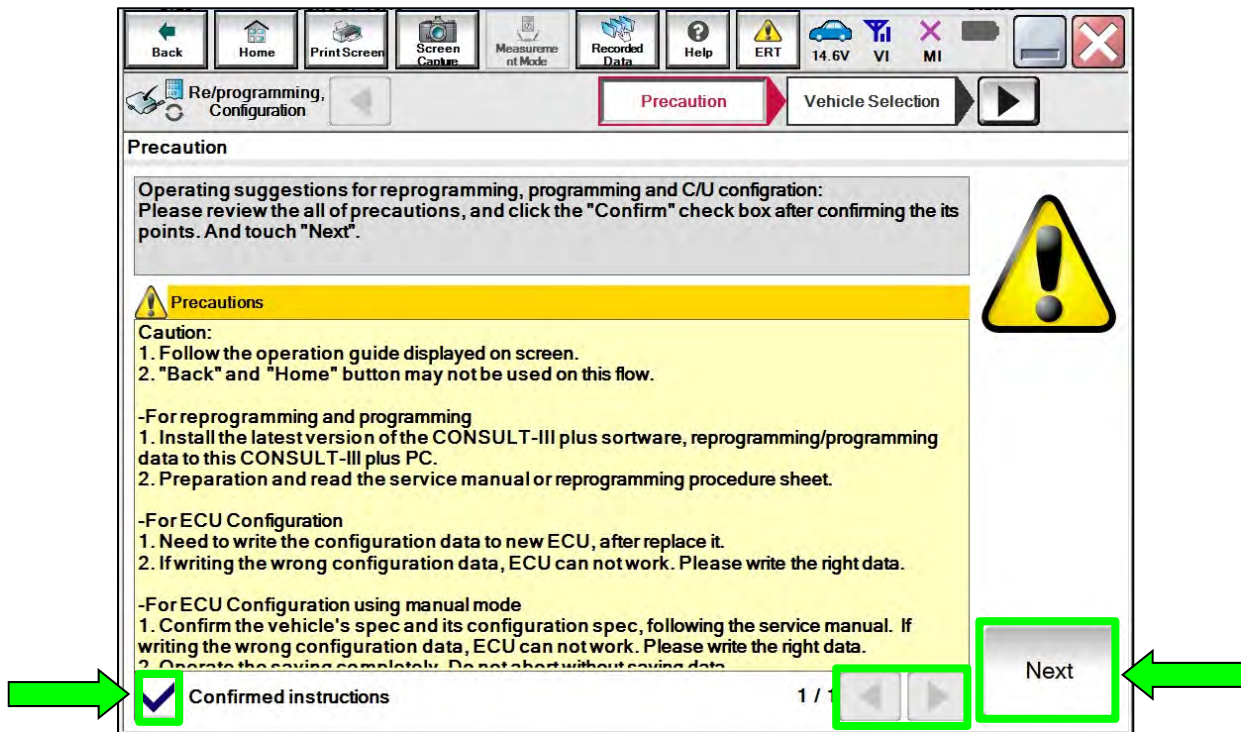


Figure 7

16. Select Automatic Selection(VIN).

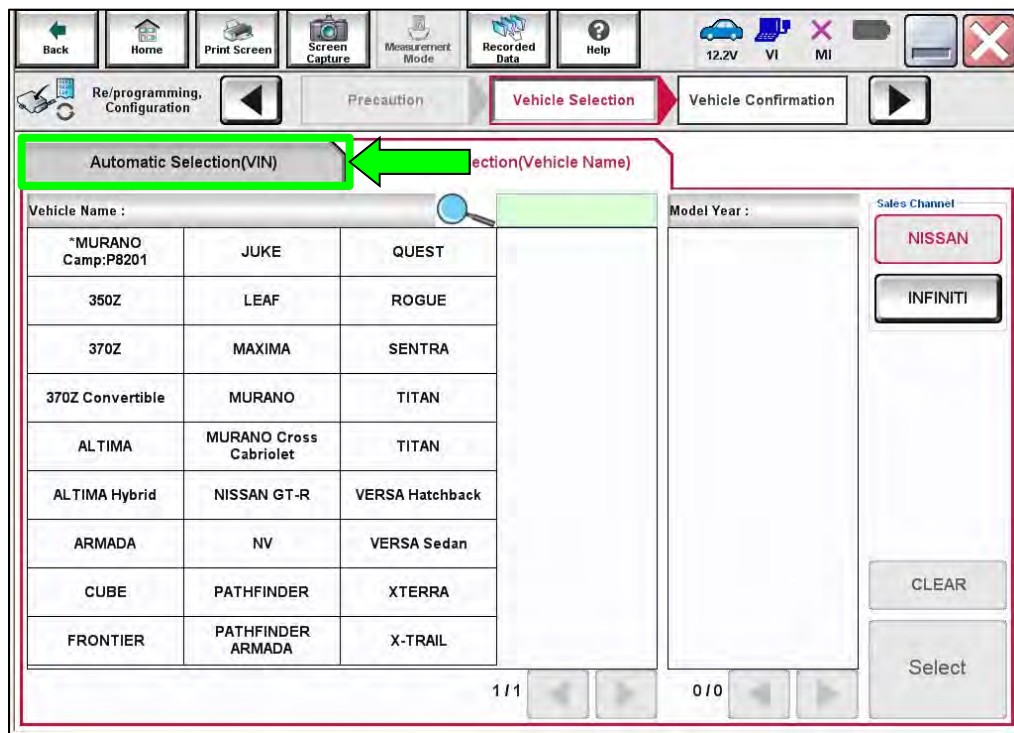


Figure 8

17. Allow C-III plus to perform automatic VIN selection.

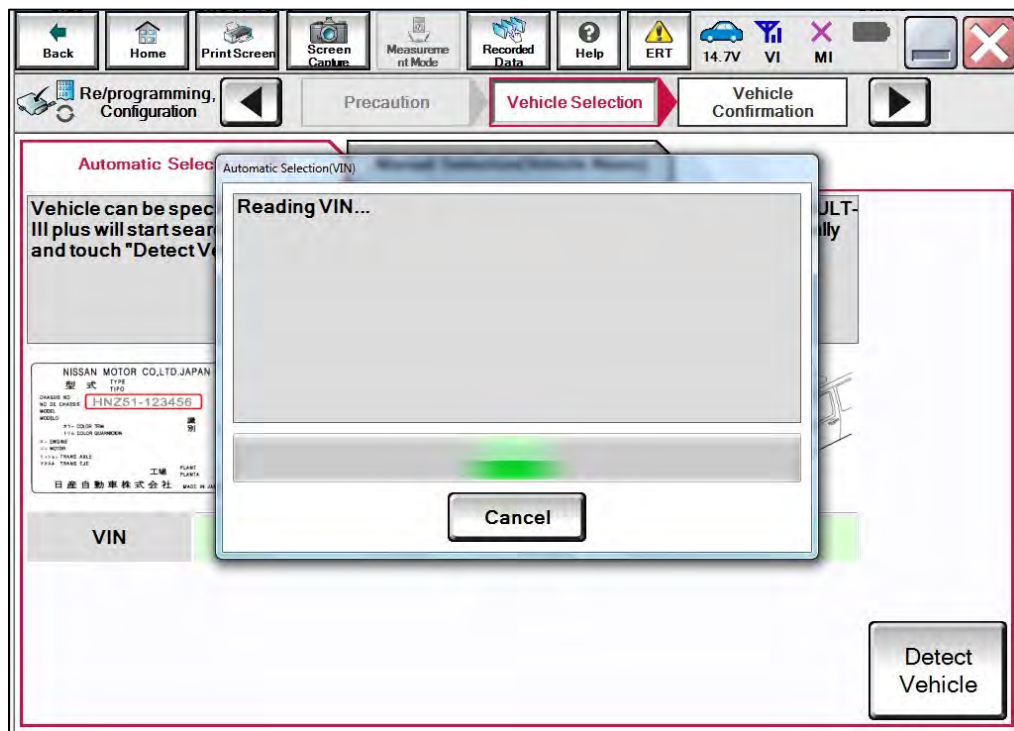


Figure 9

18. Confirm the **VIN or Chassis #** is correct, and then select **Confirm**.

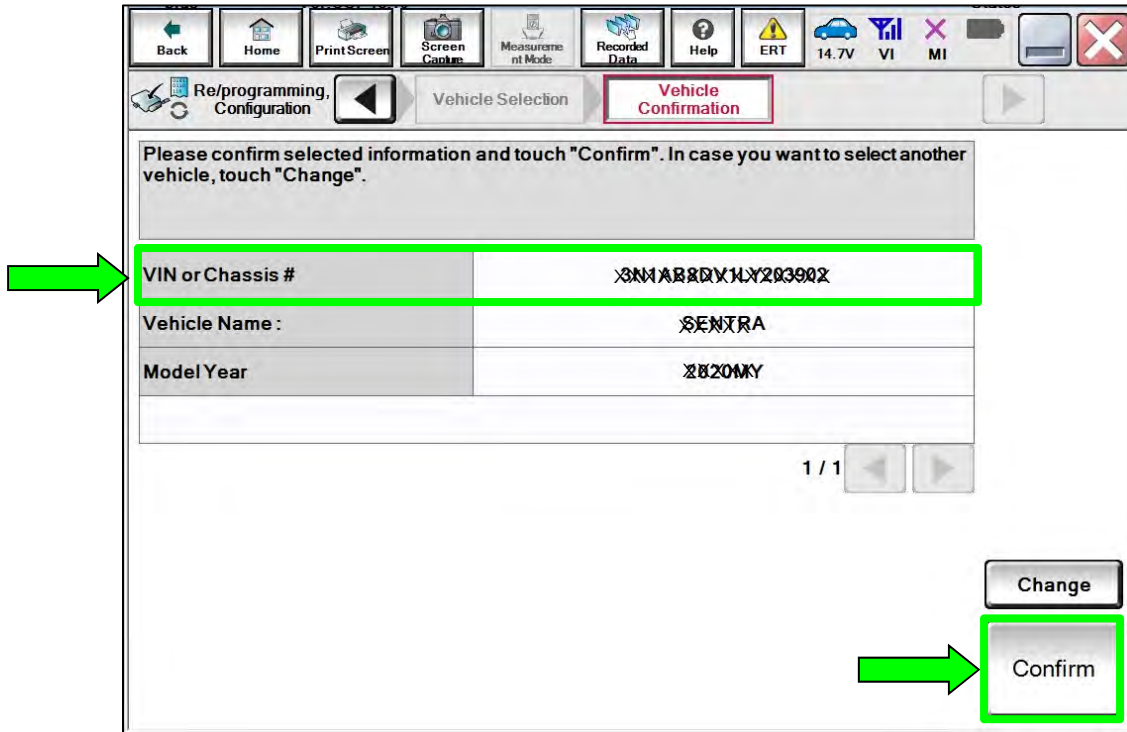


Figure 10

19. Allow the System call to be performed.

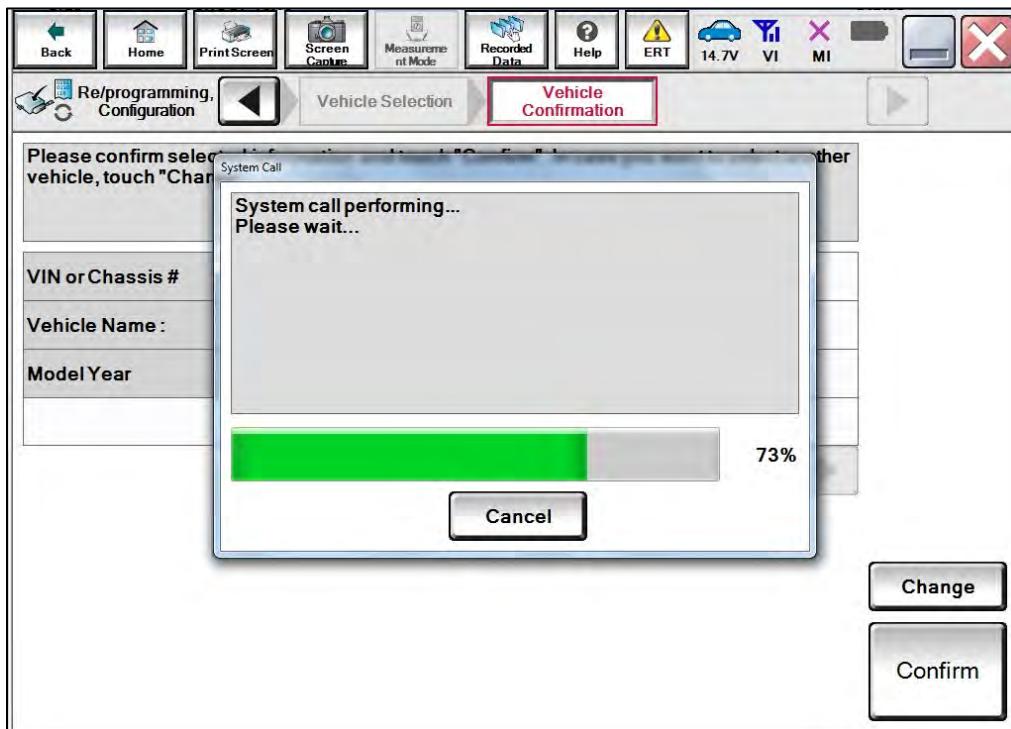


Figure 11

20. Confirm the VIN is correct for the vehicle, and then select **Confirm**.

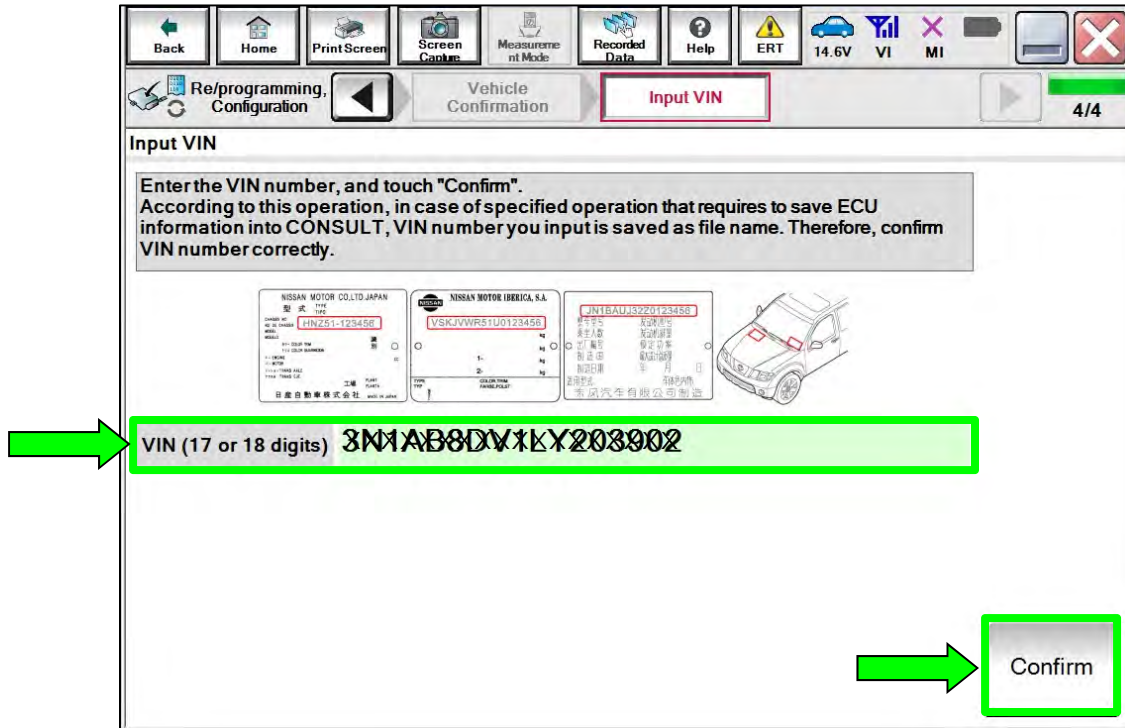


Figure 12

21. Select **SONAR**.

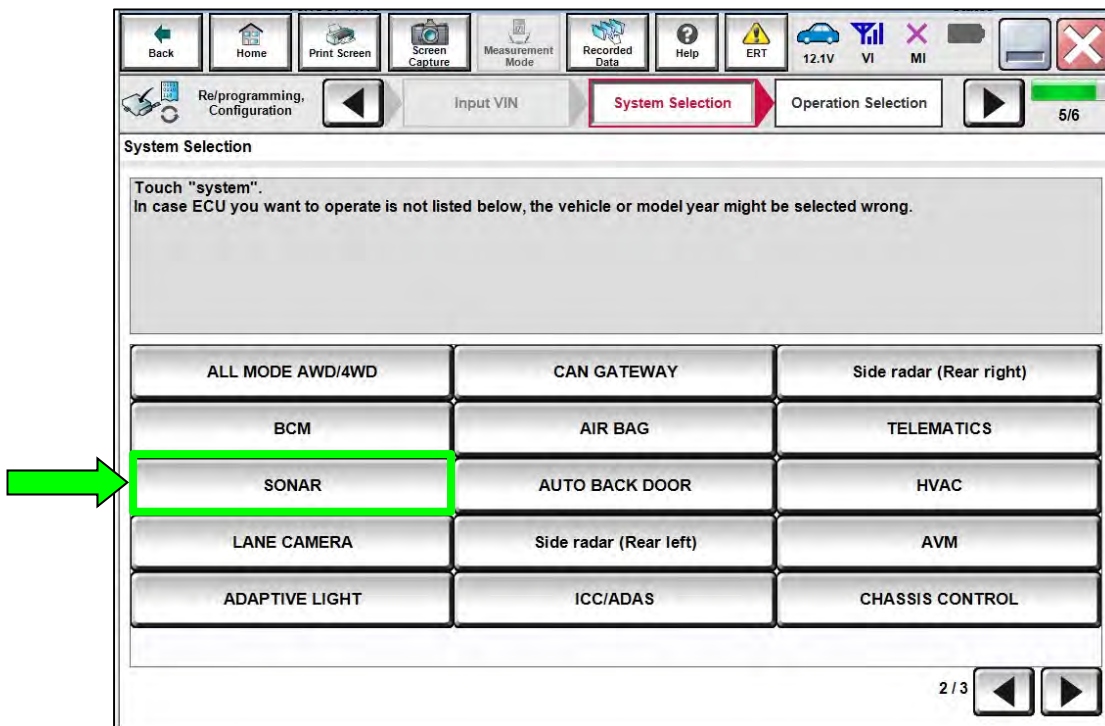


Figure 13

22. Select **Reprogramming**.

IMPORTANT: During the reprogramming process, you will receive some errors. These errors are expected. Please follow all of the steps in this procedure to successfully complete the reprogramming process.

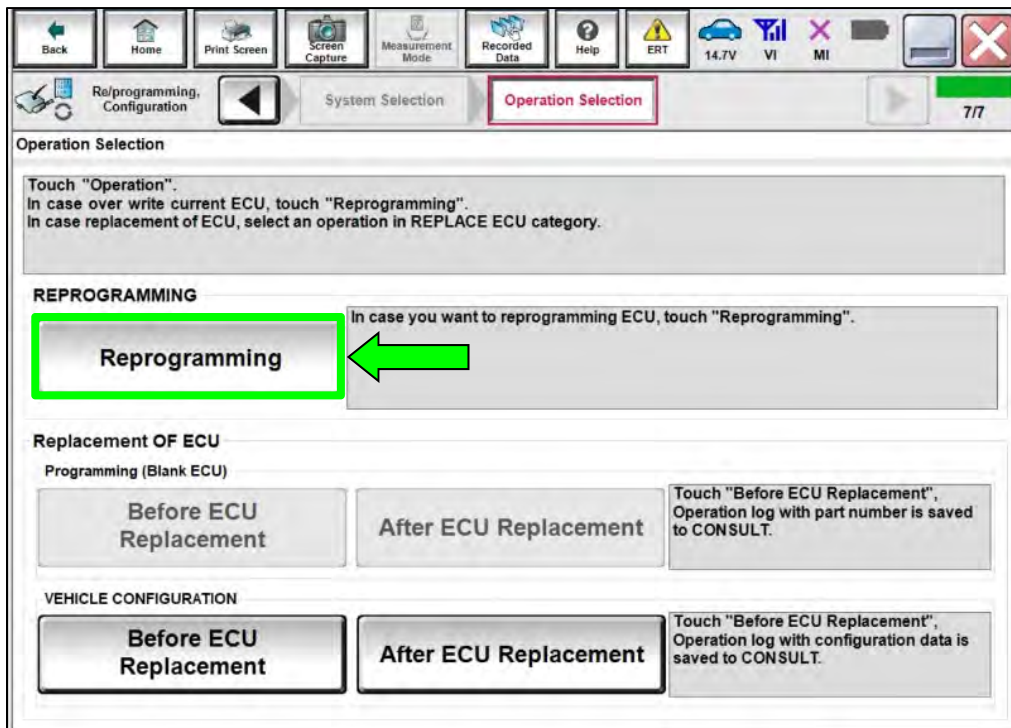


Figure 14

23. When you get to the screen shown in Figure 15, confirm that a reprogram is available as follows:

a. Find the Sonar Control Unit **Part Number** and write it on the repair order.

NOTE: This is the current part number (P/N).

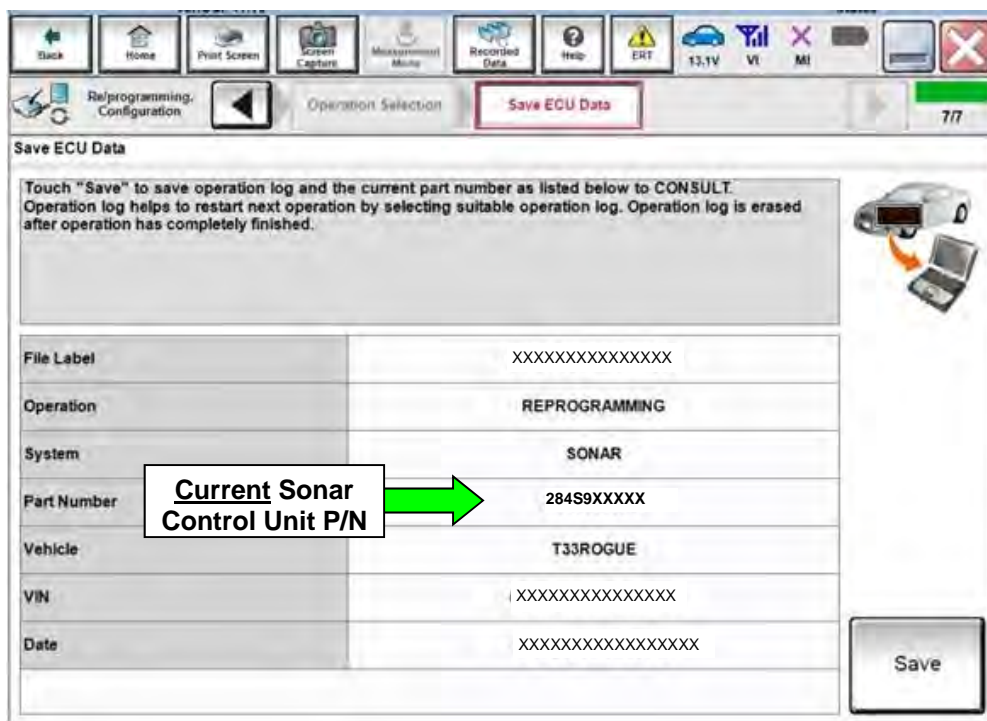


Figure 15

b. Compare the part number you wrote down to the part numbers in **Table A**.

- If there is a match in **Table A**, continue with the reprogramming procedure.
- If there is not a match in **Table A**, this bulletin does not apply. See the ESM for further diagnostic information.

Table A

MODEL	YEAR	CURRENT SONAR CONTROL UNIT PART NUMBER: 284S9-
Rogue	2021	5126R, 5559R

24. Follow the on-screen instructions to navigate C-III plus and reprogram the Sonar Control Unit.
25. Select **Save**.

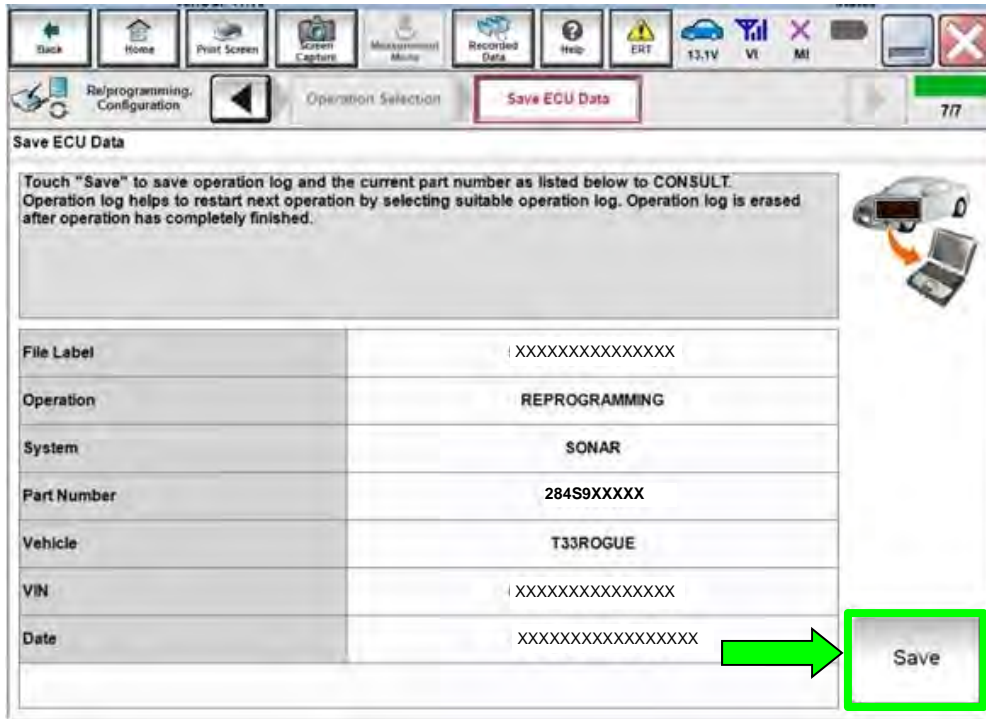


Figure 16

26. Check the box to confirm the precaution instructions have been read, and then select **Next**.

NOTE: Use the arrows (if needed) to view and read all the precautions.

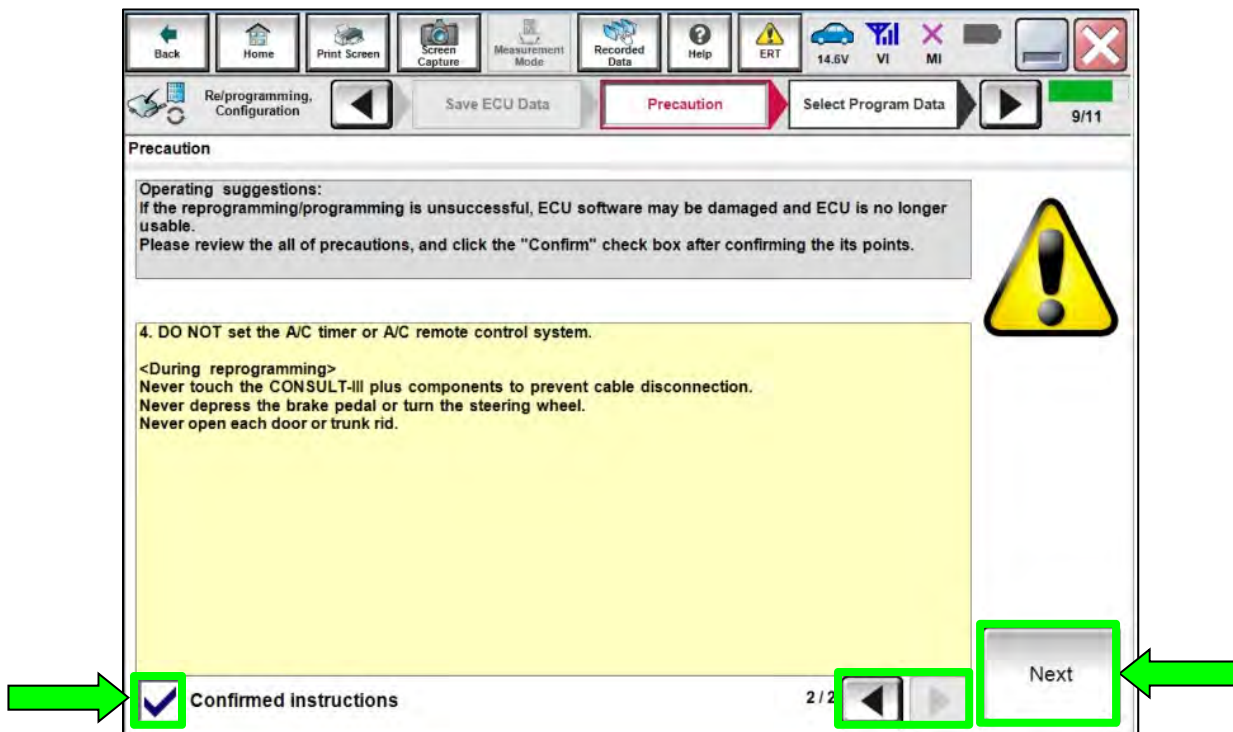


Figure 17

27. If the screen in Figure 18 displays, select **Next**. If the screen in Figure 18 does not display, continue to step 28 on page 14.

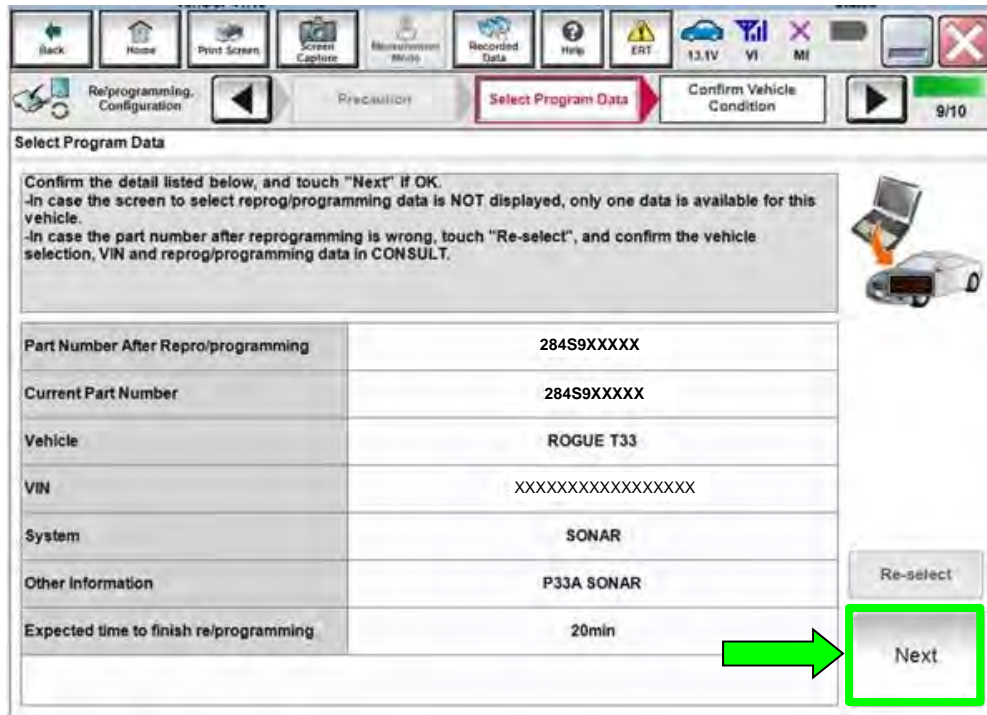


Figure 18

28. In some case, more than one part number for reprogramming is available.
- If the screen in Figure 19 displays, and more than one new part number is available, select and use the reprogramming option that does **not** have the message “Caution! Use ONLY with NTBXX-XXX”.
 - If the screen in Figure 19 displays and it is blank (no reprogramming listed), it means there is no reprogramming available for this vehicle. Close C-III plus and refer back to the ESM for further diagnosis.

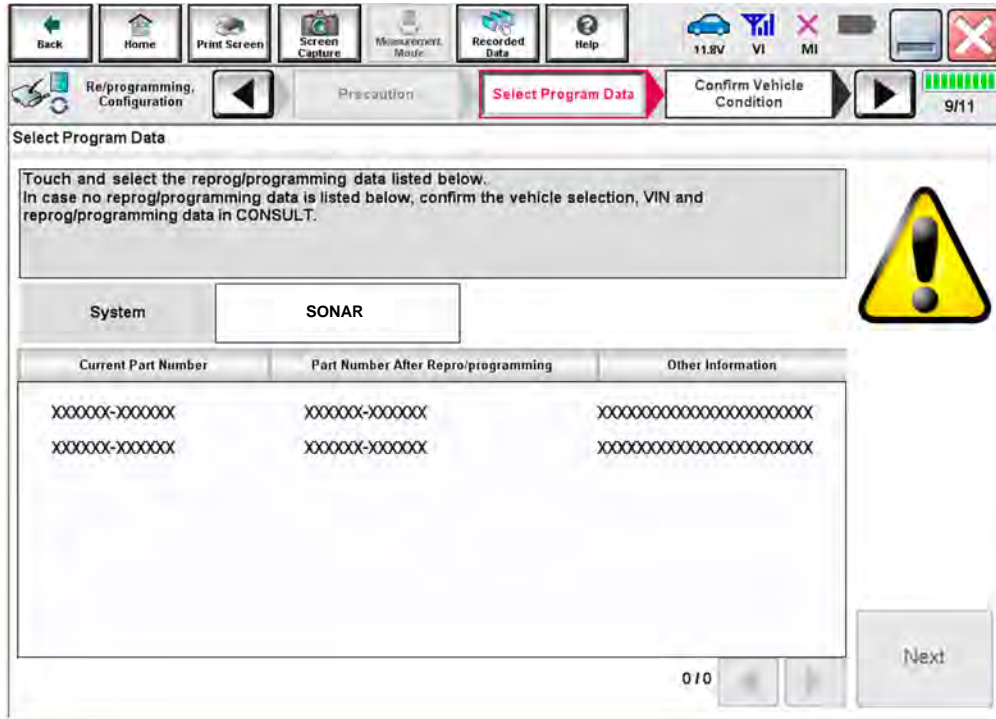


Figure 19

29. Make sure **OK** is highlighted **green** (battery voltage must be between **12.0** and **15.5 Volts**).

NOTICE

To avoid damage to the control unit, ensure a battery maintainer/smart charger is connected. The battery voltage must be between 12.0V and 15.5V during reprogramming.

30. Select **Next**.

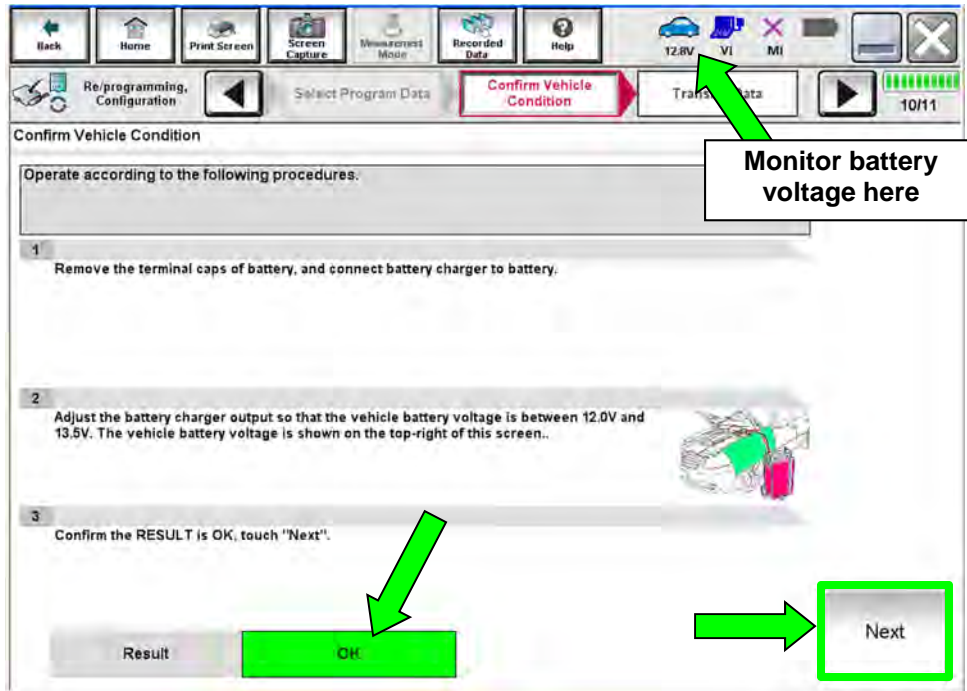


Figure 20

31. Confirm all **Judgment** items are **OK**, then select **Start**.

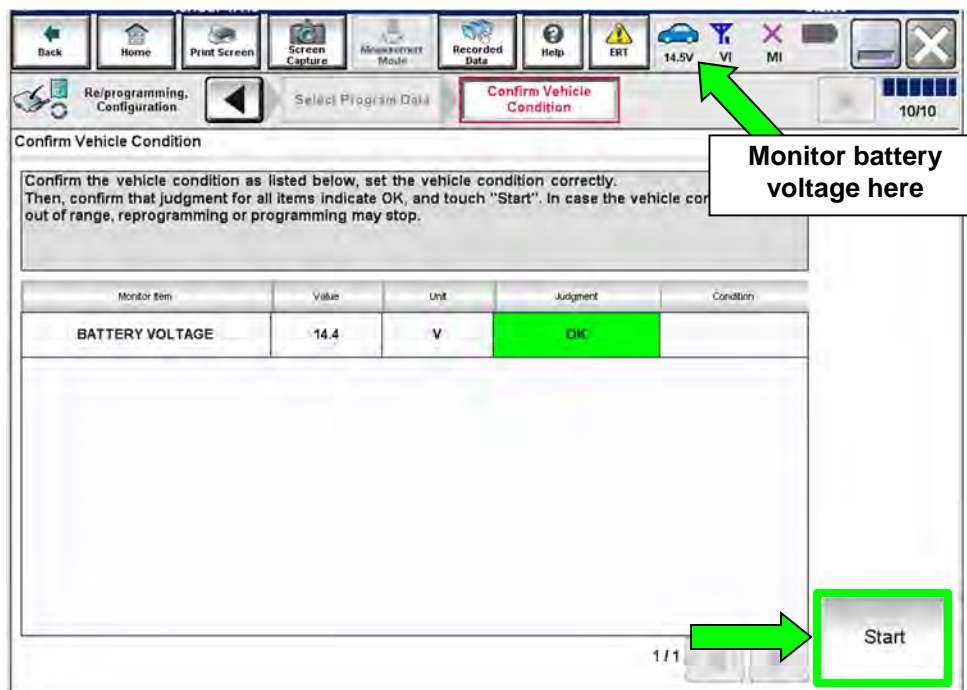


Figure 21

- 32. Select **USA/CANADA Dealers**.
- 33. Select **OK**.

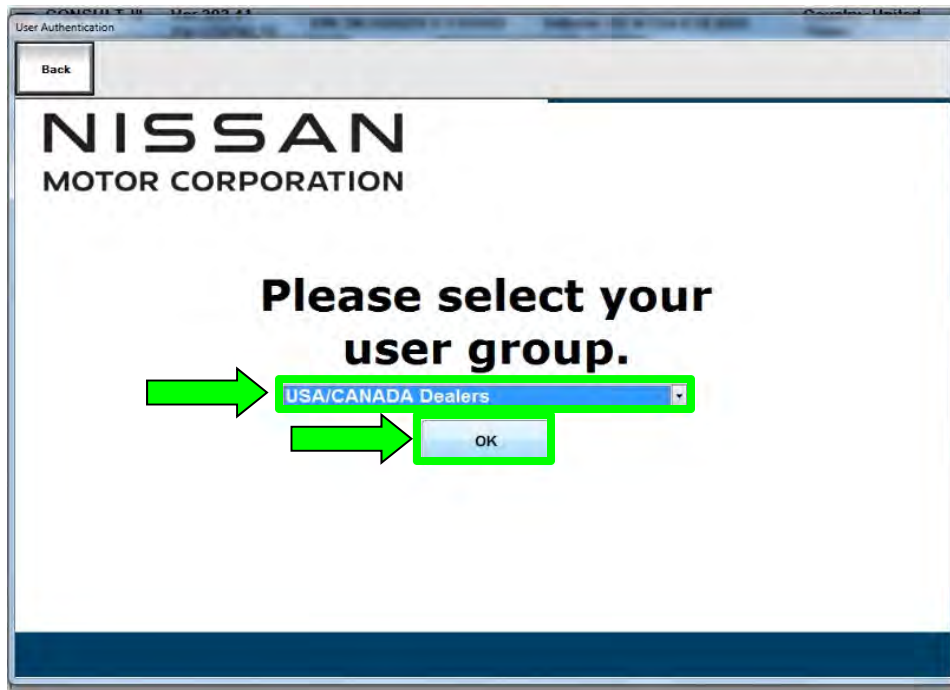


Figure 22

HINT:

- The screen in Figure 22 may not display if the CONSULT PC has remained ON since the last reprogramming.
- If the CONSULT PC is not connected to the internet, the screen in Figure 23 will display.

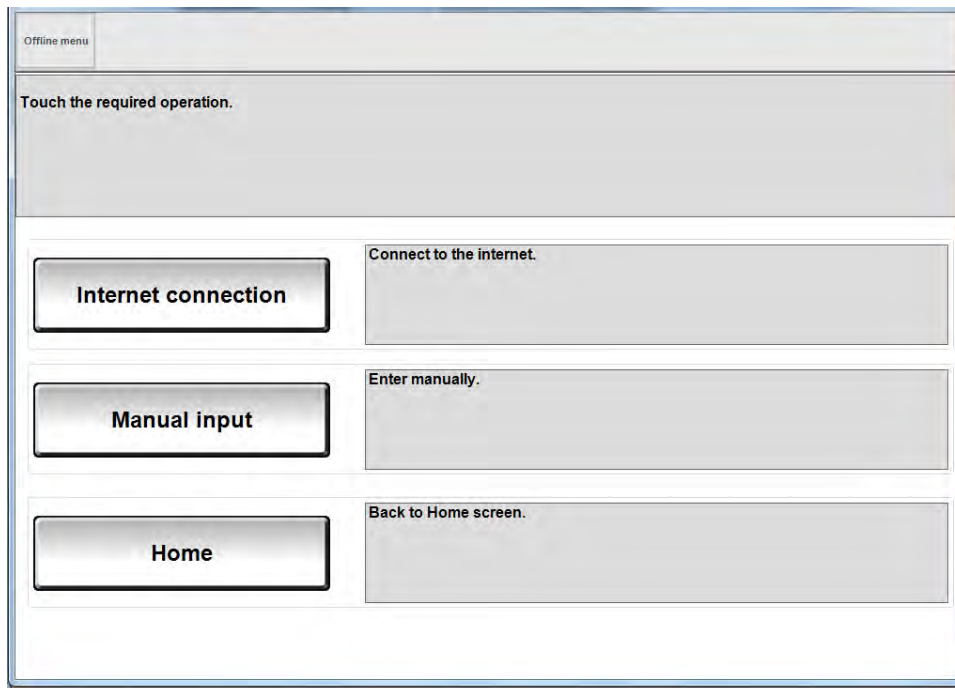


Figure 23

HINT: In the next steps, the reprogramming process will begin when **Submit** is selected.

34. Enter your **Username** and **Password**.

- The CONSULT PC must be connected to the internet via cable or Wi-Fi.
- If you do not know your username and password, contact your service manager.

35. Select **Submit**.

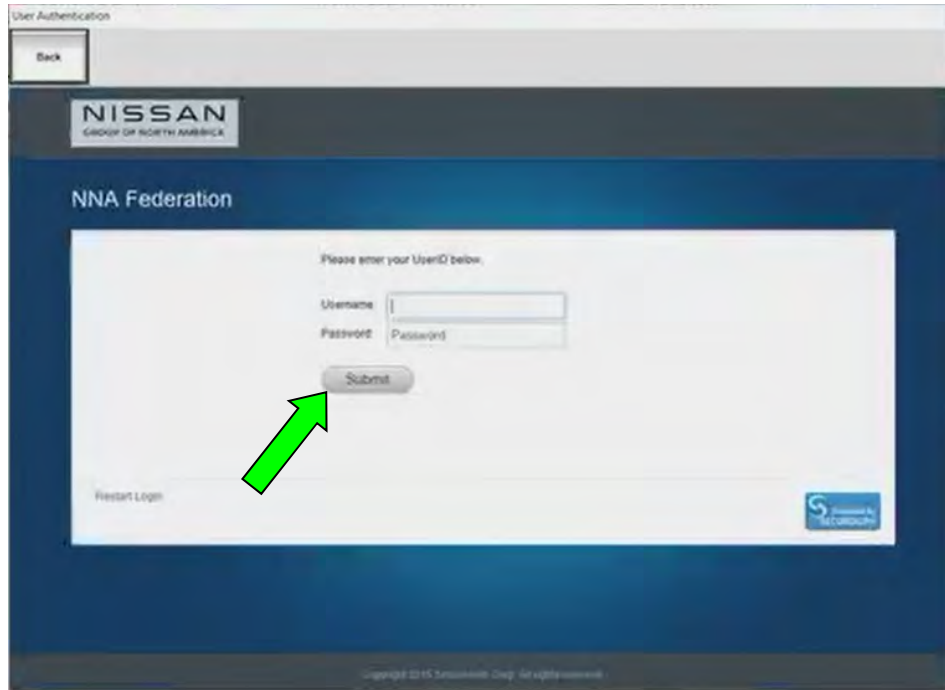


Figure 24

36. Wait for both progress bars to complete.



Figure 25

37. When the screen in Figure 26 displays, the reprogramming is complete.
 - If the screen in Figure 26 does not display (indicating that reprogramming did not complete), refer to **Sonar Control Unit Recovery** on the next page.
38. Disconnect the battery maintainer or smart charger from the vehicle.
39. Select **Next**.

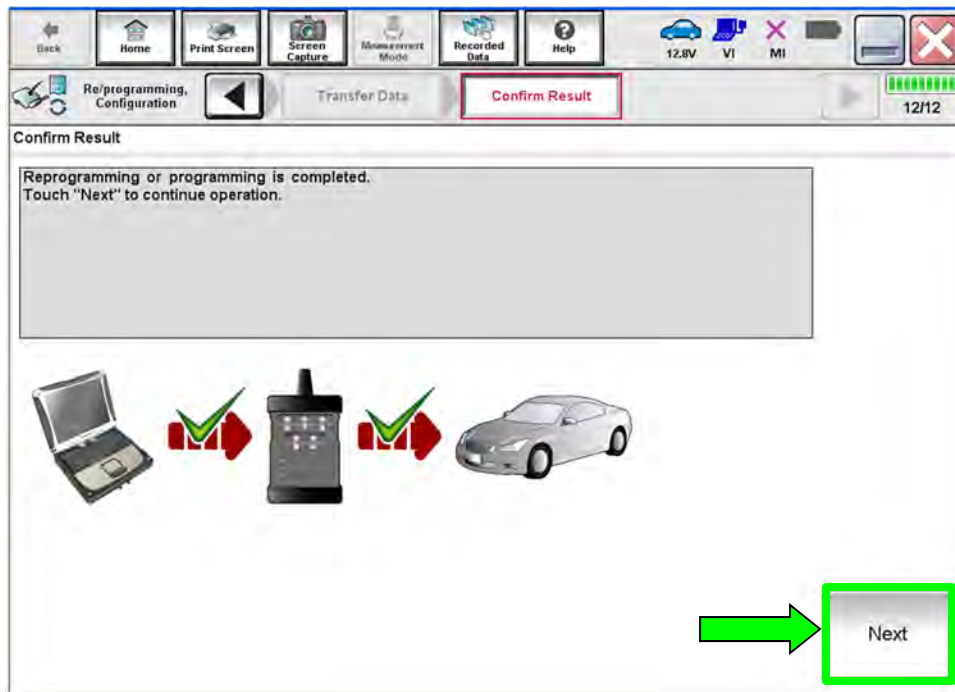


Figure 26

HINT: Additional steps/operations are required before C-III plus will provide the final reprogramming confirmation report. Continue with the reprogramming procedure on page 20.

Sonar Control Unit Recovery

Do not disconnect the VI or shut down C-III plus if reprogramming does not complete.

If reprogramming does not complete and the “!?” icon displays as shown in Figure 27:

- Check battery voltage (12.0 - 15.5 V).
- Ignition is ON, engine OFF.
- External Bluetooth® devices are OFF.
- **All electrical loads are OFF.**
- **Select retry and follow the on screen instructions.**
- “Retry” may not go through on first attempt and can be selected more than once.

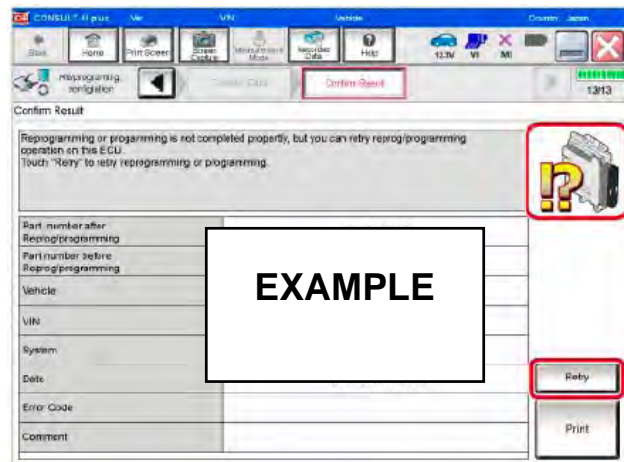


Figure 27

If reprogramming does not complete and the “X” icon displays as shown in Figure 28:

- Check battery voltage (12.0 - 15.5 V).
- CONSULT A/C adapter is plugged in.
- Ignition is ON, engine OFF.
- Transmission is in Park.
- All C-III plus / VI cables are securely connected.
- All C-III plus updates are installed.
- **Select Home, and restart the reprogram procedure from the beginning.**

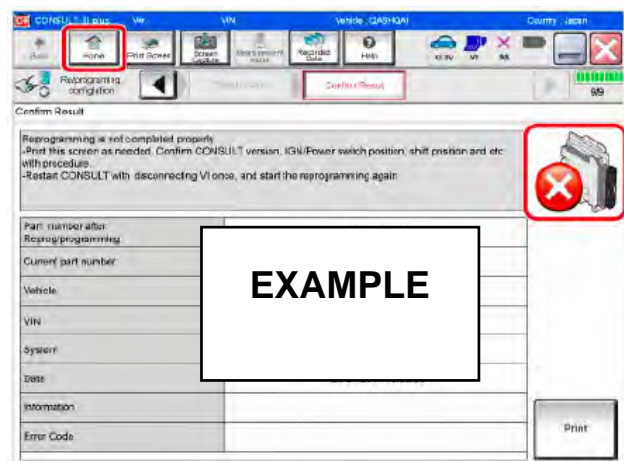


Figure 28

40. Erase all DTCs as follows:

A. Turn the ignition OFF.

B. Turn the ignition ON.

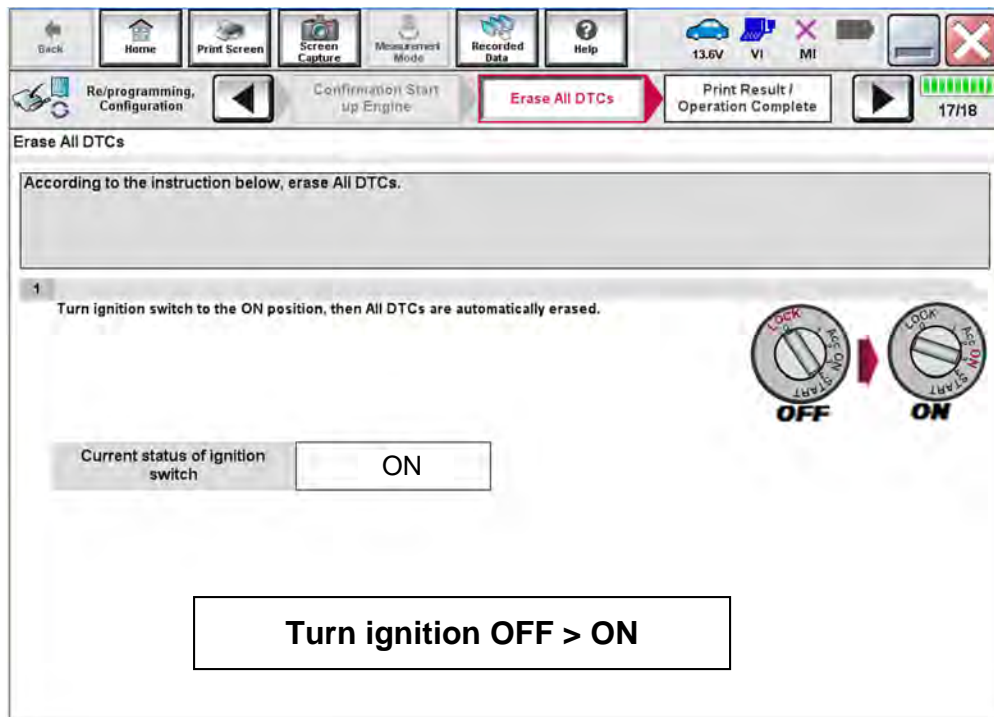


Figure 29

HINT: When the entire reprogramming process is complete, the screen in Figure 30 will display.

41. Verify the before and after part numbers are different.
42. Print a copy of the screen below (Figure 30) and attach it to the repair order for warranty documentation.

HINT: If you cannot print the screen:

- a. Select Screen Capture.
 - b. Name the file.
 - c. Save the file in My Documents.
 - A copy of the screen is now saved in the C-III plus. It can be retrieved and printed at a later time.
43. Select **Confirm**.

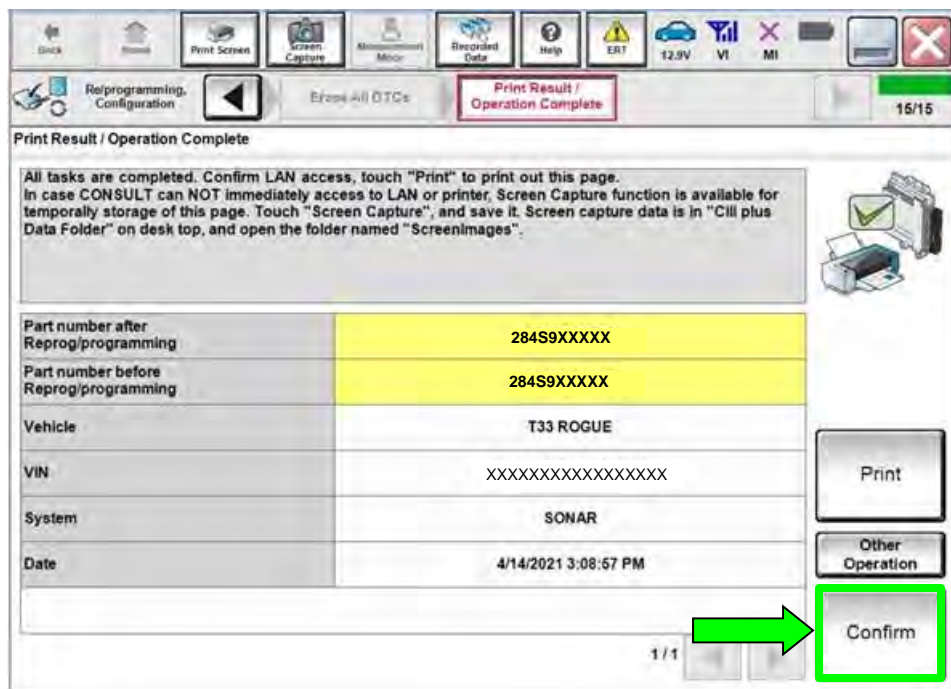


Figure 30

44. Select **Home** (screen not shown).

45. Select **Re/programming, Configuration**.

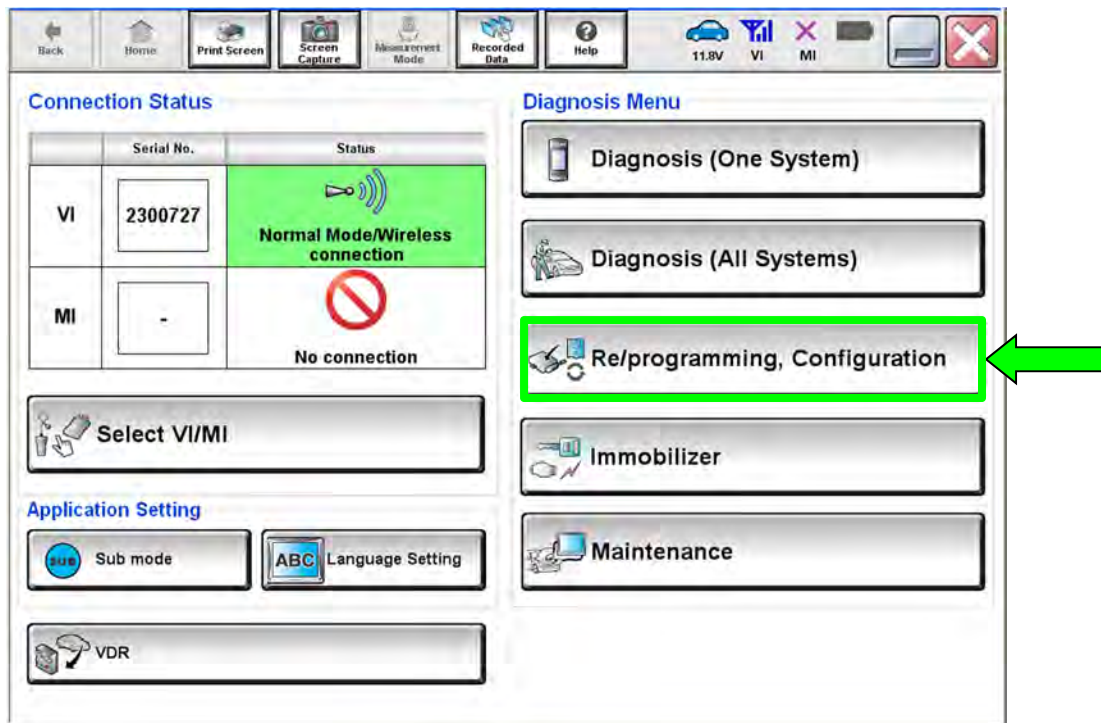


Figure 31

NOTE: C-III plus screens for steps 46–49 are not shown.

46. Read the precautions on the C-III plus screen, check the box for Confirmed Instructions, then select **Next**.
47. Select **Automatic Selection(VIN)**.
48. Select **Confirm**.
49. Select **Confirm**.

50. Select **SONAR**.

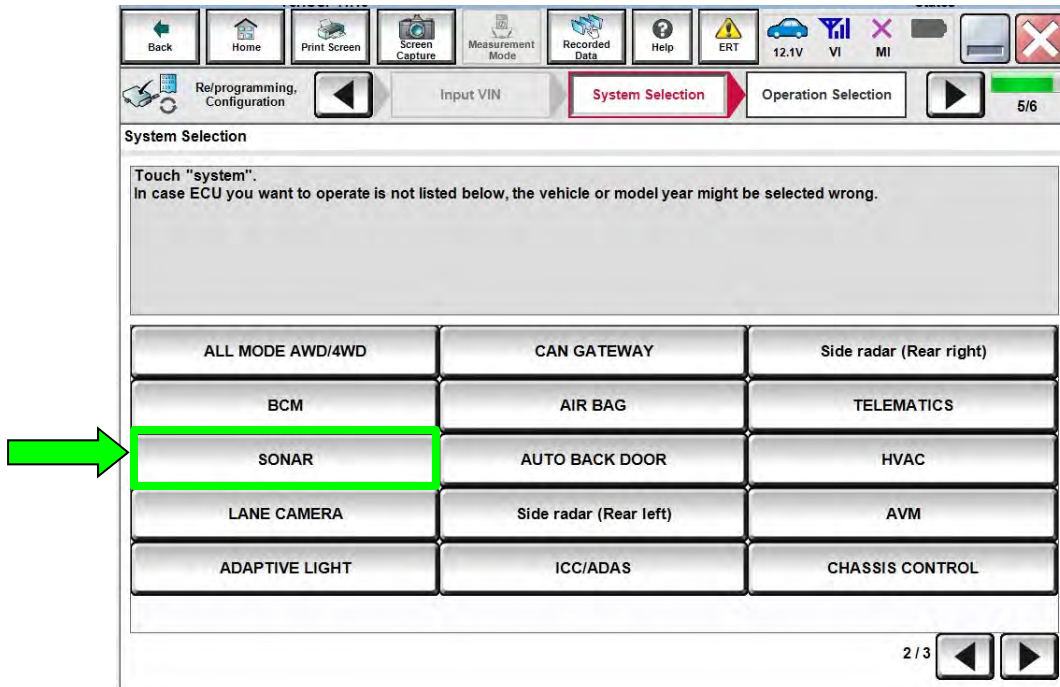


Figure 32

51. Select **Configuration**.

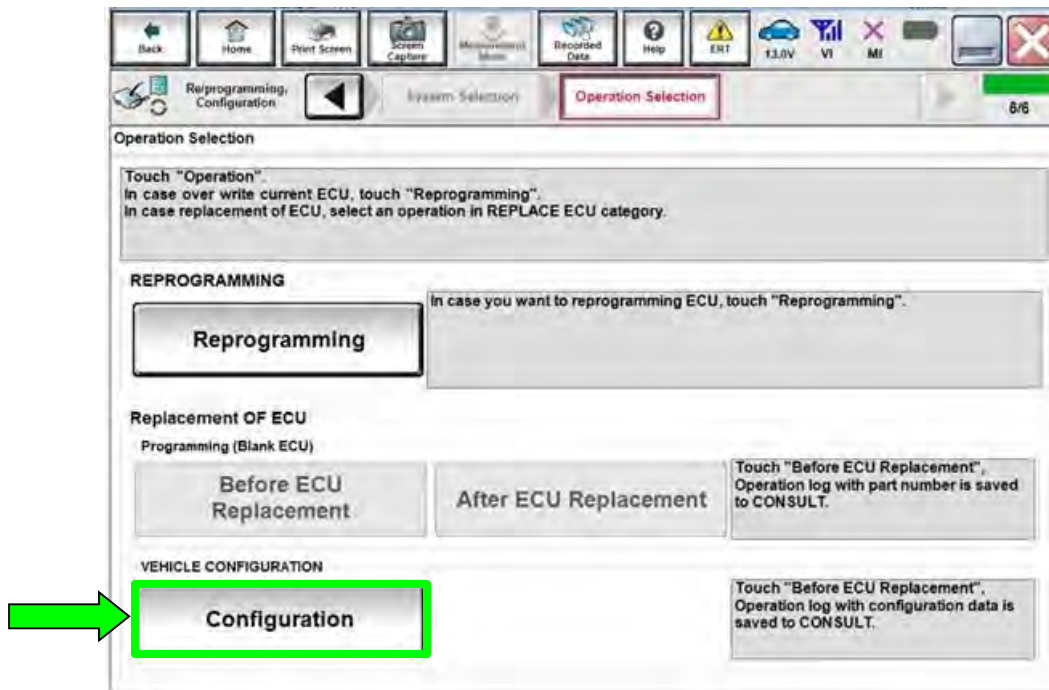


Figure 33

52. Select **START**.

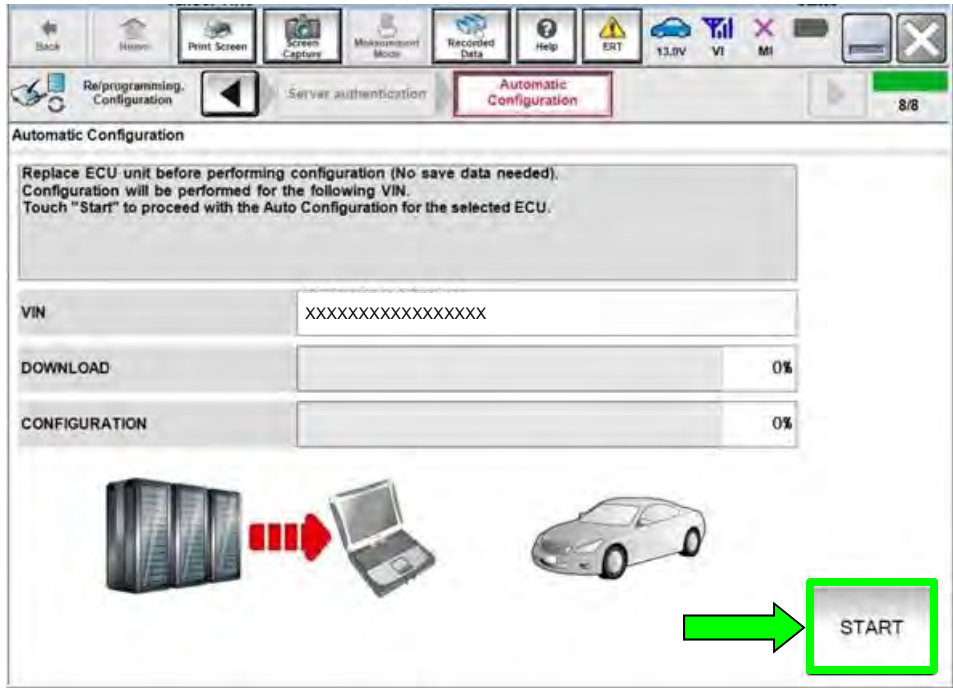


Figure 34

53. Select **End**.

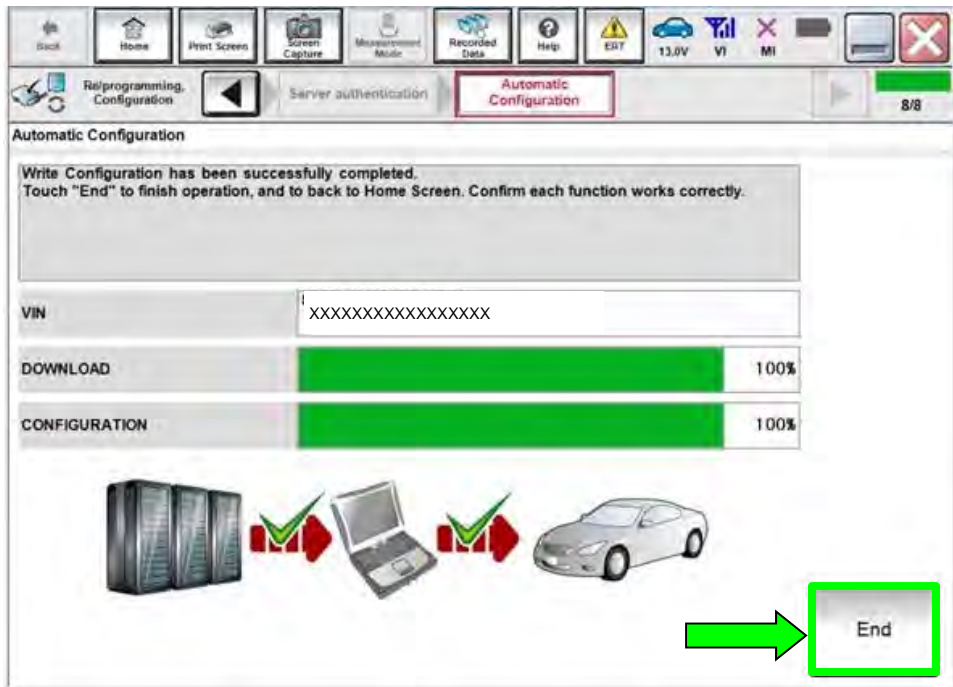


Figure 35

54. Select **Home** button (screen not shown).

55. Select **Diagnosis (All Systems)**.

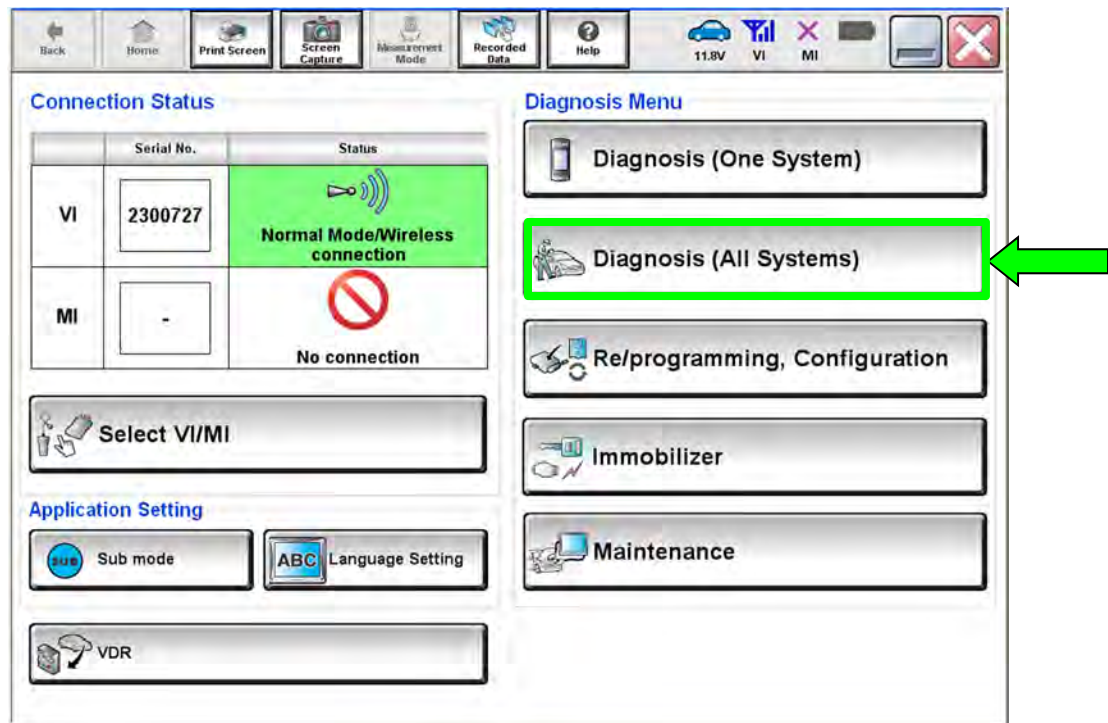


Figure 36

NOTE: C-III plus screens for steps 56–58 are not shown.

56. Select **Automatic Selection(VIN)**.

57. Select **Confirm**.

58. Select **Confirm**.

59. Turn the ignition OFF.
60. Turn the ignition ON.
61. DTCs B2724-55 and C1F65-04 may be displayed.
62. Select **ERASE**.

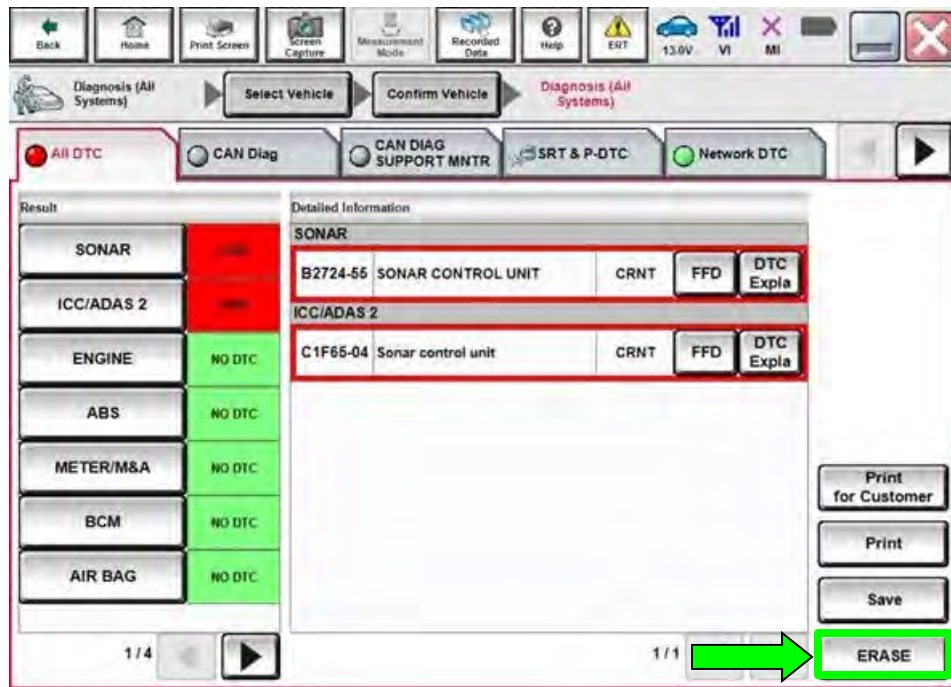


Figure 37

63. Close C-III plus.
64. Turn the ignition OFF.
65. Disconnect the VI from the vehicle.
66. Start the engine.
67. Test drive the vehicle and make sure it operates correctly and the MIL is OFF.
 - If the MIL comes ON, go back to the ESM for further diagnostic information.
 - Diagnosis and repairs beyond Sonar Control Unit reprogramming are not covered by this bulletin.

CLAIMS INFORMATION

Submit a Primary Part (PP) type line claim using the following claims coding:

DESCRIPTION	PFP	OP CODE	SYM	DIA	FRT
Check Sonar ECU Part Number	(1)	RX9YAA	ZE	32	0.4

OR

DESCRIPTION	PFP	OP CODE	SYM	DIA	FRT
Reprogram Sonar Control Unit	(1)	RX9QAA	ZE	32	0.9

- (1) Reference the electronic parts catalog and use the Sonar Control Unit (28532-*****) as the Primary Failed Part (PFP).

NOTE: FRT allows adequate time to access DTC codes. No other diagnostic procedures subsequently required. Do NOT claim any Diagnostic Op Codes with this claim.

AMENDMENT HISTORY

PUBLISHED DATE	REFERENCE	DESCRIPTION
May 20, 2021	NTB21-040	Original bulletin published