

THIS LSC EXPIRES ON MAY 31, 2016

**TECHNICAL INSTRUCTIONS
FOR
LIMITED SERVICE CAMPAIGN D0E
ECM SOFTWARE UPDATE
CERTAIN
2012-2013 MODEL TUNDRA AND SEQUOIA (3UR)**

UPDATED JANUARY 7, 2015

TECHNICAL INSTRUCTIONS UPDATED NOTICE:

Updated 1/7/15

- Updated calibration table

Updated 5/15/13

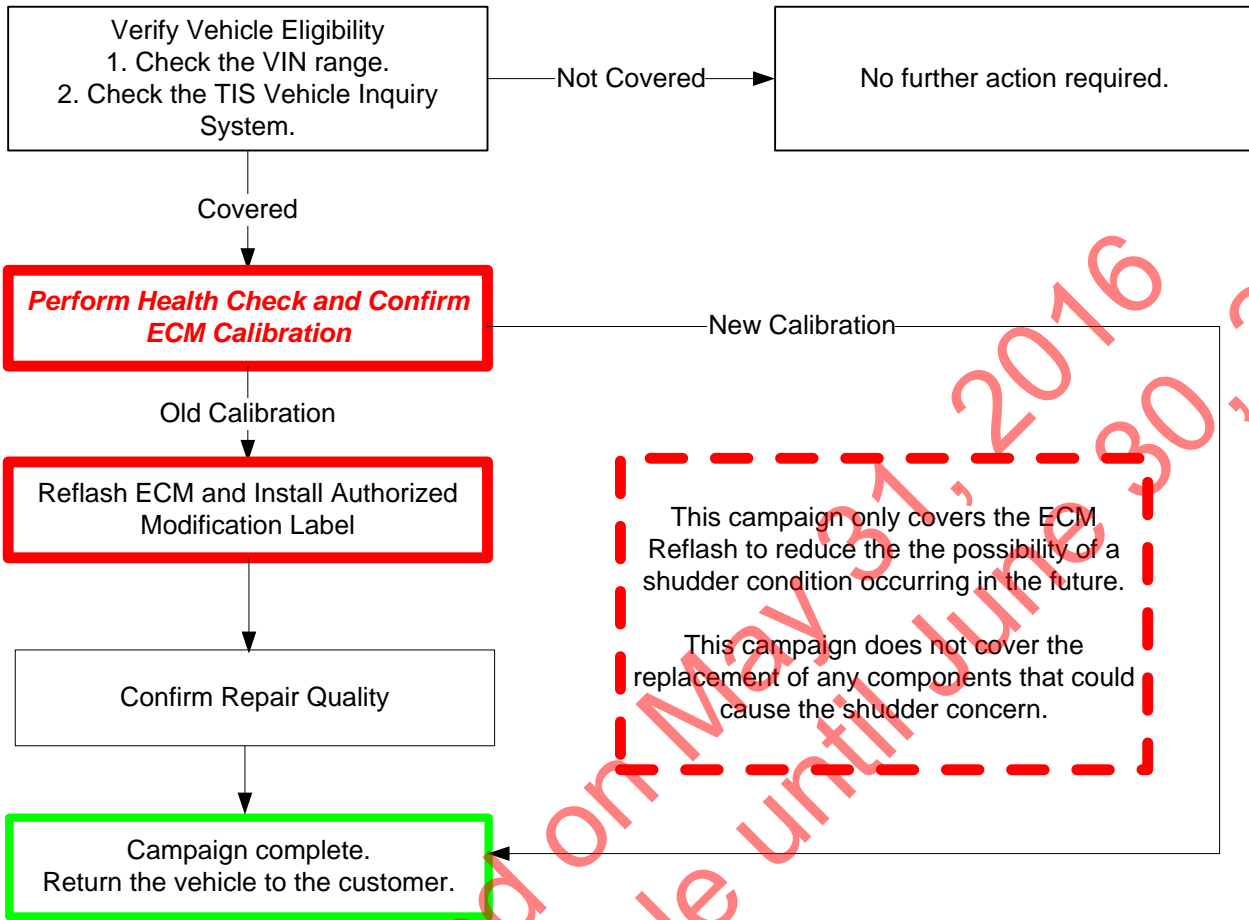
- Update to the VIN Break Down ([SECTION II, page 3](#))

All dealership associates involved in the LSC process are required to successfully complete E-Learning course SC13A. To ensure that all vehicles have the repair performed correctly; technicians performing this LSC repair are required to currently hold at least one of the following certifications levels:

- Toyota Certified (any classifications)
- Toyota Expert (any classifications)
- Master
- Master Diagnostic Technicians

THIS LSC EXPIRES ON MAY 31, 2016

OPERATION FLOW CHART



LSC Expired on May 31, 2016
Claim filing available until June 30, 2016

THIS LSC EXPIRES ON MAY 31, 2016

I. IDENTIFICATION OF COVERED VEHICLES

A. COVERED VIN RANGE

- Check the TIS Vehicle Inquiry System to confirm the VIN is involved in this Safety Recall, and that the campaign has not already been completed prior to dealer shipment or by another dealer.
- TMS warranty will not reimburse dealers for repairs conducted on vehicles that are not affected or were completed by another dealer.

II. PREPARATION

A. PARTS

Part Number	Part Description	Quantity
00451-00001-LBL*	Authorized Modification Label	1

*Labels can be ordered in packs of 25 from the MDC through the Dealer Daily Website

Only If DTC P0418 and/or P2445 are present:

Part Number	Part Description	Quantity
17610-0S030*	Air Pump Assembly*	1

B. TOOLS, SUPPLIES & EQUIPMENT

- Standard Hand Tools
- Techstream 2.0 / TIS Techstream / Techstream Lite (Software Version 8.00.034 or Later)
- GR8 Diagnostic Station

III. BACKGROUND

In certain 2012 – 2013 Model Year Toyota Tundra and Sequoia vehicles equipped with a 5.7 Liter gasoline or 5.7 Liter-Flex Fuel engines, the Engine Control Module (ECM) calibration may cause an emissions control component called an Air Injection Pump to fail under certain driving conditions. If this occurs, the vehicle could enter a “Fail-Safe” Mode (also known as “Limp-Home” Mode). This mode reduces the vehicle’s power and speed, which could inconvenience you and require immediate repair.

THIS LSC EXPIRES ON MAY 31, 2016

IV. ECM CALIBRATION ID VERIFICATION AND DTC CHECK

A. CONFIRM ECM CALIBRATION ID

- 1) Perform a health check
- 2) Confirm the calibration ID in the ECM.

MODEL	YEAR	ENGINE	DRIVE	OPTION	ECU	CURRENT CID	NEW CID		
Tundra	2012-2013	3UR-FE	2WD	-	-	30CJ5000	30CJ5400		
						30CJ5100			
						30CJ5200			
						30CJ5300			
			4WD			30CJ5001		30CJ5401	
						30CJ5101			
						30CJ5201			
						30CJ5301			
		3UR-FBE	2WD	Towing	-	30CJ6000	30CJ6400		
						30CJ6100			
						30CJ6200			
						30CJ6300			
			4WD			30CJ6001		30CJ6401	
						30CJ6101			
						30CJ6201			
						30CJ6301			
		3UR-FBE	4WD	-	-	30CJ9000	30CJ9500		
						30CJ9100			
						30CJ9200			
						30CJ9300			
30CJ9400									
Towing	-					-		30CK0000	30CK0500
								30CK0100	
								30CK0200	
								30CK0300	
								30CK0400	
								30CK2000	
30CK2100									
30CK2200									
3UR-FE	2WD	-	-	30CK2300	30CK2401				
				4WD		30CK2001			
						30CK2101			
	30CK2201								
	3UR-FBE			2WD		Towing	-	30CK2301	30CK1400
								4WD	
30CK1100									
30CK1200									
3UR-FBE		4WD	-	-	30CK1300			30CK1401	
					30CK1001				
	30CK1101								
	30CK1201								
	30CK1301								
	30CK5000				30CK5500				
30CK5100									
30CK5200									
30CK5300									
3UR-FBE	4WD	Towing	-	30CK5400	30CK6500				
				30CK6000					
				30CK6100					
				30CK6200					
				30CK6300					
				30CK6400					

THIS LSC EXPIRES ON MAY 31, 2016



- If the ECM has already been calibrated with the new calibration the campaign is complete.

B. CHECK FOR STORED DTC(S)

- 1) Confirm if one or both of the following DTC are stored in the system.
 - P0418 – Secondary Air Injection System Control “A” Circuit
 - P2445 – Secondary Air Injection Pump Stuck OFF Bank 1

Condition	Action Required
ECM Contains Old Cal ID and Neither DTC is Present	Proceed with ECM Reflash Only!
ECM contains Old Cal ID and P0418 and/or P2445 is present	Proceed with ECM Reflash and Bank 1 Air Pump Assembly Replacement



- If the ECM has the updated calibration and P0418 and/or P2445 it is not covered under this campaign.

V. ECM REFLASH PROCEDURE

A. CONNECT THE GR8

- a) Set the GR8 to Power Supply Mode to help maintain 13.5 volts during ECM reprogramming.



- A battery charger set to power supply mode **MUST** be used during reprogramming.
- ECM damage may occur if the correct battery charger setting is not used.

B. REFLASH THE ECM

- a) Click yes on the health check results screen, or follow the links on the table above to begin the reflash process.

NOTE:

- For general reprogramming procedures, refer to [T-SB-0012-13](#).
- Confirm the latest version of Techstream software is being used.

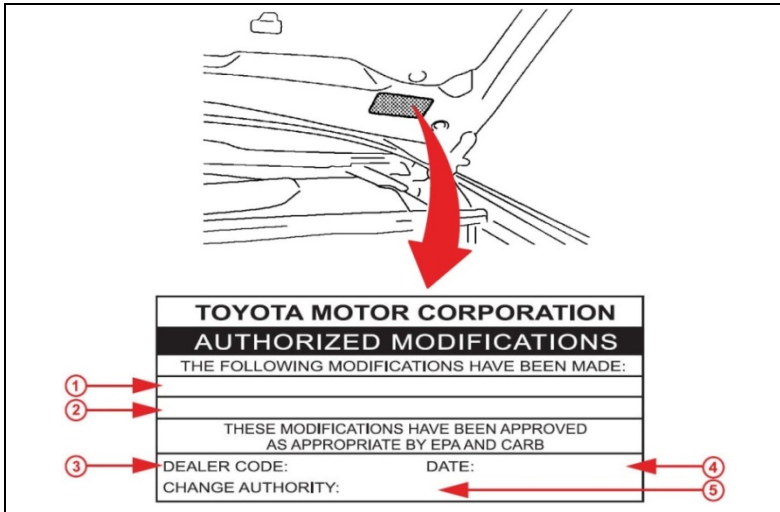


- If the Techstream does not have sufficient battery power the reflash will fail.
- Confirm the DLC3 cable is in good condition before attempting reflash.

C. ATTACH THE AUTHORIZED VEHICLE MODIFICATION LABEL

- a) Fill out the label.
- b) Affix the label to the under-side of the hood.

THIS LSC EXPIRES ON MAY 31, 2016



1	ECM P/N
2	New Calibration ID
3	Dealer Code
4	Date Completed
5	Campaign Code (DOE)

1. CHECK FOR DTCs

VI. BANK 1 PUMP ASSEMBLY REPLACEMENT (if required)

Refer to TIS for instruction on Bank 1 Pump Assembly removal/installation

- 2012 Tundra (3UR-FE) Air Pump [Removal / Installation](#)
- 2012 Tundra (3UR-FBE) Air Pump [Removal / Installation](#)
- 2013 Tundra (3UR-FE) Air Pump [Removal / Installation](#)
- 2013 Tundra (3UR-FBE) Air Pump [Removal / Installation](#)
- 2012 Sequoia (3UR-FE) Air Pump [Removal / Installation](#)
- 2012 Sequoia (3UR-FBE) Air Pump [Removal / Installation](#)
- 2013 Sequoia (3UR-FE) Air Pump [Removal / Installation](#)
- 2013 Sequoia (3UR-FBE) Air Pump [Removal / Installation](#)

◀ VERIFY REPAIR QUALITY ▶

- Confirm the ECM Calibration has been updated successfully
- Confirm *that an* Authorized Modification Label has been installed
- If you have any questions regarding this recall, please contact your regional representative

VII. APPENDIX

A. CAMPAIGN DESIGNATION DECODER

