

PREVOST

Instruction Sheet

IS-20925A

CENTRAL HVAC MERV FILTERS INSTALLATION

Revision A

Info added: Optional metal frames available for kit 1 & 2

06-15-2021

APPLICATION

| Part No. | Type | Vehicles |
|-----------|---------|--|
| IS20925-1 | MERV 8 | H345 from A-1470 and up, X345 from B-5002 up to D-5458 <i>NOTE: 370497 & 370480 metal frames available for first installation</i> |
| IS20925-2 | MERV 13 | |
| IS20925-3 | MERV 8 | X345 from 7-8784 up to B-5001 |
| IS20925-4 | MERV 13 | |
| IS20925-5 | MERV 8 | H345 from R-012 to 9-1469 |
| IS20925-6 | MERV 13 | |

NOTE

Filter change is recommended every 3 months for MERV13 filters and every 6 months for MERV8 filters

OPTIONAL MATERIAL

Order the following reusable metal frames for the first installation of Kit # **IS20925-1** & # **IS20925-2**:

| Part No. | Description | Qty |
|----------|--|-----|
| 370479 | OPTIONAL AIR FILTER FRAME 1" X 38" X 10-1/2" ASS (1) | 1 |
| 370480 | OPTIONAL AIR FILTER FRAME 1" X 38" X 10-1/2" ASS (2) | 1 |

MATERIAL

Kit # **IS20925-1** includes the following parts*:

| Part No. | Description | Qty |
|----------|---|-----|
| 871466 | CENTRAL UNIT MERV8 FILTER 1" X 38" X 10 1/2 | 2 |
| IS-20925 | INSTRUCTION SHEET (EN) | 1 |
| FI-20925 | INSTRUCTION SHEET (FR) | 1 |

* 370497 & 370480 Optional metal frames available for first installation

Kit # **IS20925-2** includes the following parts*:

| Part No. | Description | Qty |
|----------|--|-----|
| 870142 | CENTRAL UNIT MERV13 FILTER 1" X 38" X 10 1/2 | 2 |
| IS-20925 | INSTRUCTION SHEET (EN) | 1 |
| FI-20925 | INSTRUCTION SHEET (FR) | 1 |

* 370497 & 370480 Optional metal frames available for first installation

Kit # **IS20925-3** includes the following parts:

| Part No. | Description | Qty |
|----------|--|-----|
| 870144 | CENTRAL UNIT MERV8 FILTER 1" X 38" X 21" | 1 |
| IS-20925 | INSTRUCTION SHEET (EN) | 1 |
| FI-20925 | INSTRUCTION SHEET (FR) | 1 |

Kit # **IS20925-4** includes the following parts:

| Part No. | Description | Qty |
|----------|---|-----|
| 870145 | CENTRAL UNIT MERV13 FILTER 1" X 38" X 21" | 1 |
| IS-20925 | INSTRUCTION SHEET (EN) | 1 |
| FI-20925 | INSTRUCTION SHEET (FR) | 1 |

Kit # **IS20925-5** includes the following parts:

| Part No. | Description | Qty |
|----------|--|-----|
| 870146 | CENTRAL UNIT MERV8 FILTER 1" X 23 3/8" X 43 1/2" | 1 |
| IS-20925 | INSTRUCTION SHEET (EN) | 1 |
| FI-20925 | INSTRUCTION SHEET (FR) | 1 |

Kit # **IS20925-6** includes the following parts:

| Part No. | Description | Qty |
|----------|---|-----|
| 870147 | CENTRAL UNIT MERV13 FILTER 1" X 23 3/8" X 43 1/2" | 1 |
| IS-20925 | INSTRUCTION SHEET (EN) | 1 |
| FI-20925 | INSTRUCTION SHEET (FR) | 1 |

NOTE

Material can be obtained through regular channels.

PROCEDURE



DANGER

Park vehicle safely, apply parking brake, stop engine. Prior to working on the vehicle, set the ignition switch to the OFF position and trip the main circuit breakers equipped with a trip button. On Commuter type vehicles, set the battery master switch (master cut-out) to the OFF position.

Lock out & Tag out (LOTO) must be performed during set-up, maintenance or repair activities. Refer to your local procedure for detailed information regarding the control of hazardous energy.



CAUTION

All waste coming from the filters must be considered as potentially contaminated (dust and particles). **Handle accordingly & wear proper personal protection equipment (PPE).**

1. Open the vehicle filter compartment door, this door is located in the baggage compartment next to the evaporator.

NOTE: Door size and shape may differ.



2. Remove the filter(s) from the evaporator compartment.

NOTE: Vehicles may use one large or two small filters (as shown on this late model H345). Refer to tables above for correct application & part number



OPTIONAL AIR FILTER METAL FRAME INSTALLATION (FOR KITS IS20925-1 & IS20925-2)

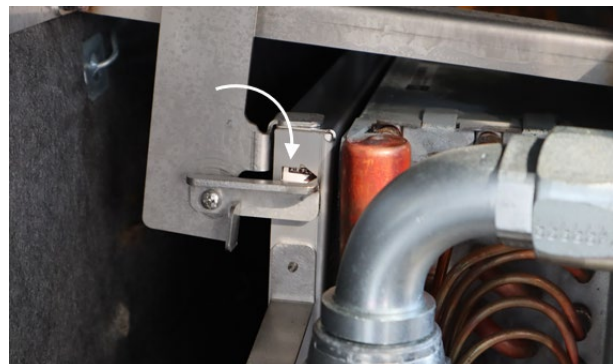
1. Insert the filter in the frame making sure that the element fits inside the locating tabs.



2. Make sure that the airflow direction arrow of the filter element matches with the metal frame flow arrow.



3. Install both filters in the vehicle. Take note that the upper filter is having a wider handle with a protruding "hook" at the lower corner (see image above).
4. Close the locking tab to secure the filters in place.

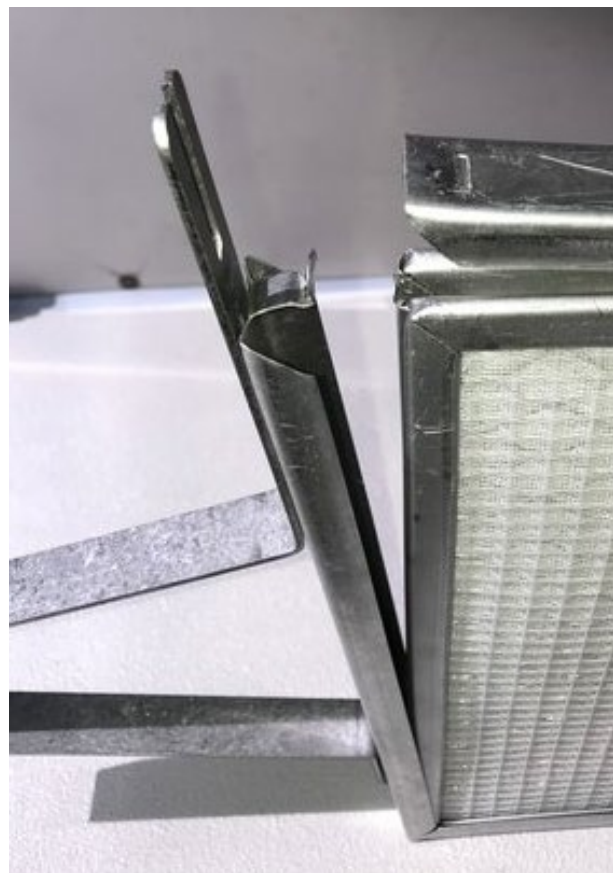
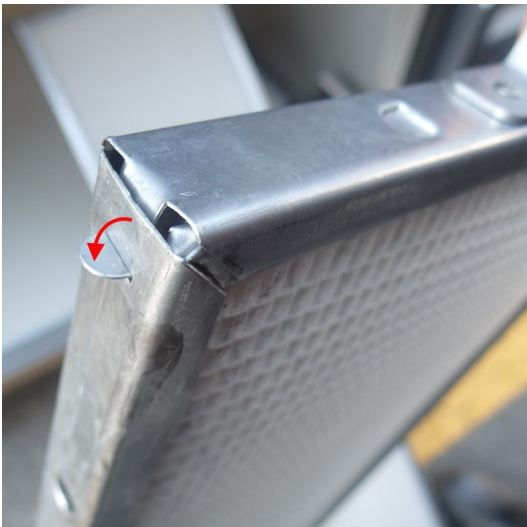


STANDARD AIR FILTER INSTALLATION (ALL KITS)

1. Remove (drill out) all small rivets present around the filter metal frame (metal frame will be reused).

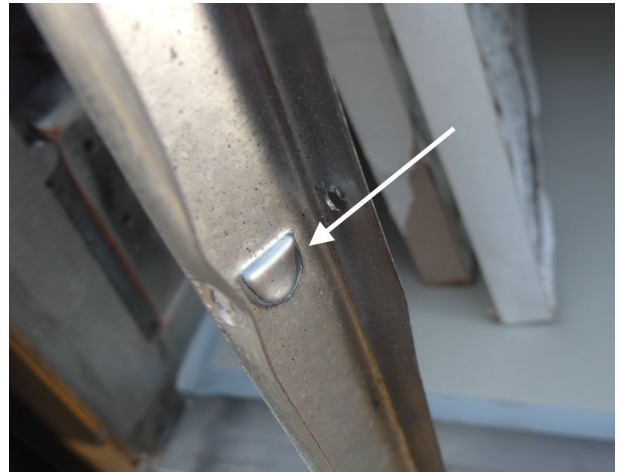


2. Unbent the metal frame locking tab located at one of the frame corners and open the metal frame to free the filter element.



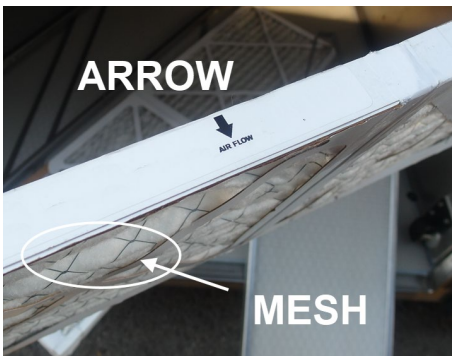
3. Remove the filter from the frame.

4. Push flat all metal tabs inside the frame rail.



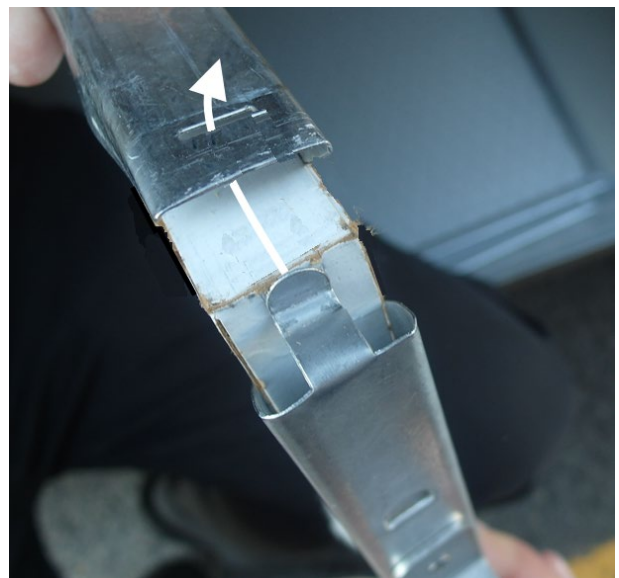
5. Insert the MERV filter in the frame rail.
Take note of the airflow direction of the filter.

NOTE: Arrow and/or mesh side of the filter must be pointing/facing the outside of the vehicle.



6. Reassemble the metal frame (insert and bent back the locking tab).

7. Reinstall the filter(s) making sure that the screen mesh is facing the outside of the vehicle.



PARTS / WASTE DISPOSAL

Discard according to applicable environmental regulations (Municipal/State[Prov.]/ Federal)

Place old filters in plastic bags & follow current health agencies recommendation regarding potentially contaminated waste disposal.