



## SIB 63 05 16

2021-06-07

### HEADLIGHT ASSEMBLIES HAVE VISIBLE INTERNAL MOISTURE/CONDENSATION

This Service Information Bulletin (Revision 4) replaces SI B63 05 16 **dated June 2019**.

#### What's New (Specific text highlighted):

- Complete bulletin update

## MODEL

<b>E-Series</b>
All

## SITUATION

Moisture is visible on the inside of one or both headlights.

## CAUSE

Water inside the headlights can be caused by two situations:

- Water/moisture ingress into the headlight housing (considered a defect)
- Thermal/environmental conditions that result in the formation of condensation (not a defect)

## CORRECTION

Determine whether the vehicle is affected by normal, naturally occurring thermal/environmental conditions which have caused condensation.

- If moisture is being caused by normal environmental conditions, no correction is necessary. The headlight lens will dry naturally as environmental conditions allow.
- If moisture is determined to be caused by a defect, repair as needed. Reference the most current TeileClearing action list.

## PROCEDURE

Determine whether moisture is caused by normal, naturally occurring thermal/environmental conditions. Light misting or formation on the inside of the lens can be a normal condition in the following example situations:

- Shortly after the vehicle is driven through a car wash or sprayed with water
- During temperature fluctuations (warming from night to daytime)
- Thermal changes when entering high humidity climates from climate-controlled areas (driving the vehicle from an air-conditioned workshop/garage to the outside)
- Environmental conditions where the sun may begin shining onto and heating the headlight lens

If normal environmental conditions are the cause of the condensation, no correction is required. The headlights are designed to dissipate normal environmental condensation through venting.

Reference the attached photo catalog for examples of what may be normal environmental condensation vs. what may be excessive water entry caused by a defect.

- Images marked with a green “A” show examples of headlights with naturally occurring condensation
- Images marked with a red “B” show examples of headlights which have been found defective

## **PARTS INFORMATION**

Parts are only required in situations where a defect is the cause of excessive water entry. In those cases, repair the vehicle as necessary depending on the specific defect.

## **WARRANTY INFORMATION**

Defects that result in excessive water entry are covered under the terms of the BMW New Vehicle Limited Warranty for Passenger Cars and Light Trucks. Defect code and labor operations will depend on the specific defect.

## **QUESTIONS REGARDING THIS BULLETIN**

Technical inquiries	Submit feedback at the top of this bulletin
Warranty inquiries	Submit an IDS ticket to the Warranty Department or use the chat available in the Warranty Documentation Portal
Parts inquiries	Submit an IDS ticket to the Parts Department

Supporting Materials

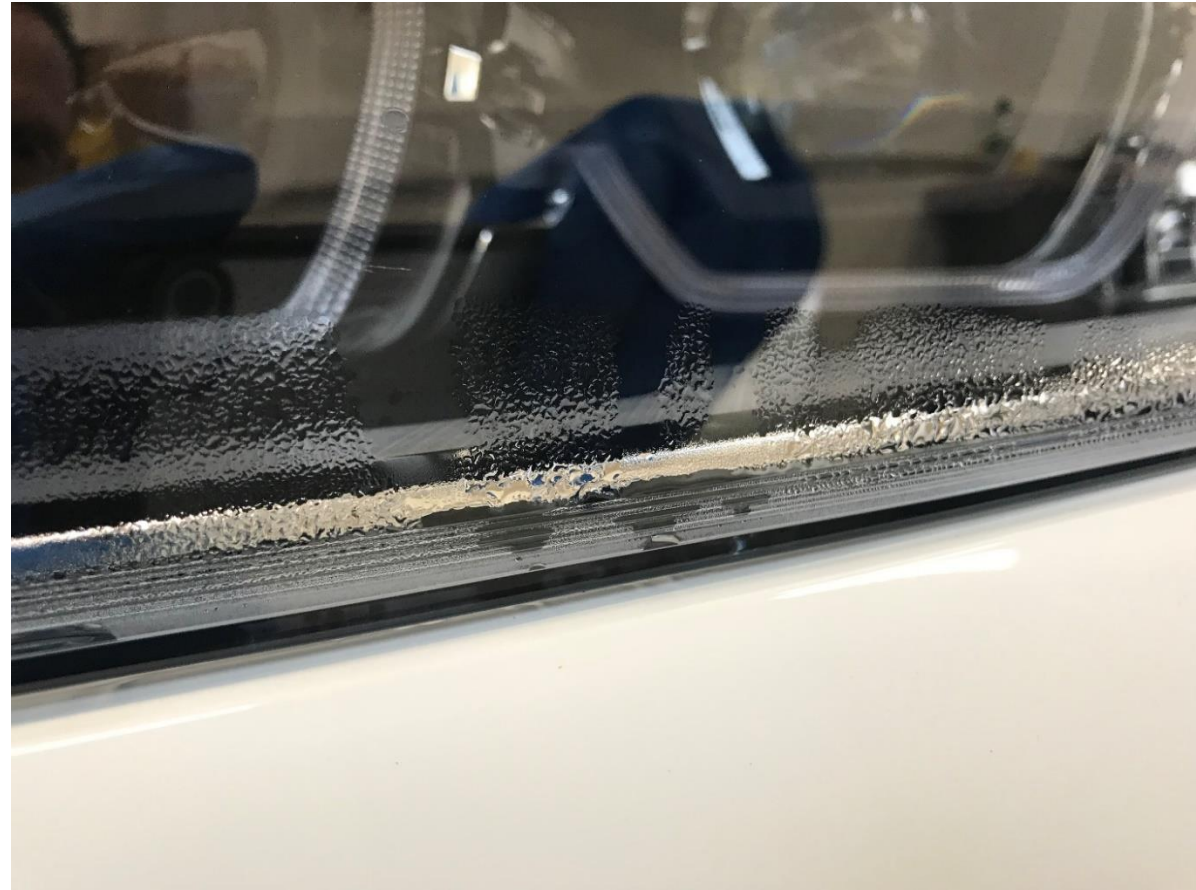
[picture\\_as\\_pdf B63 05 16 Attachment 1.pdf](#)

1

F39

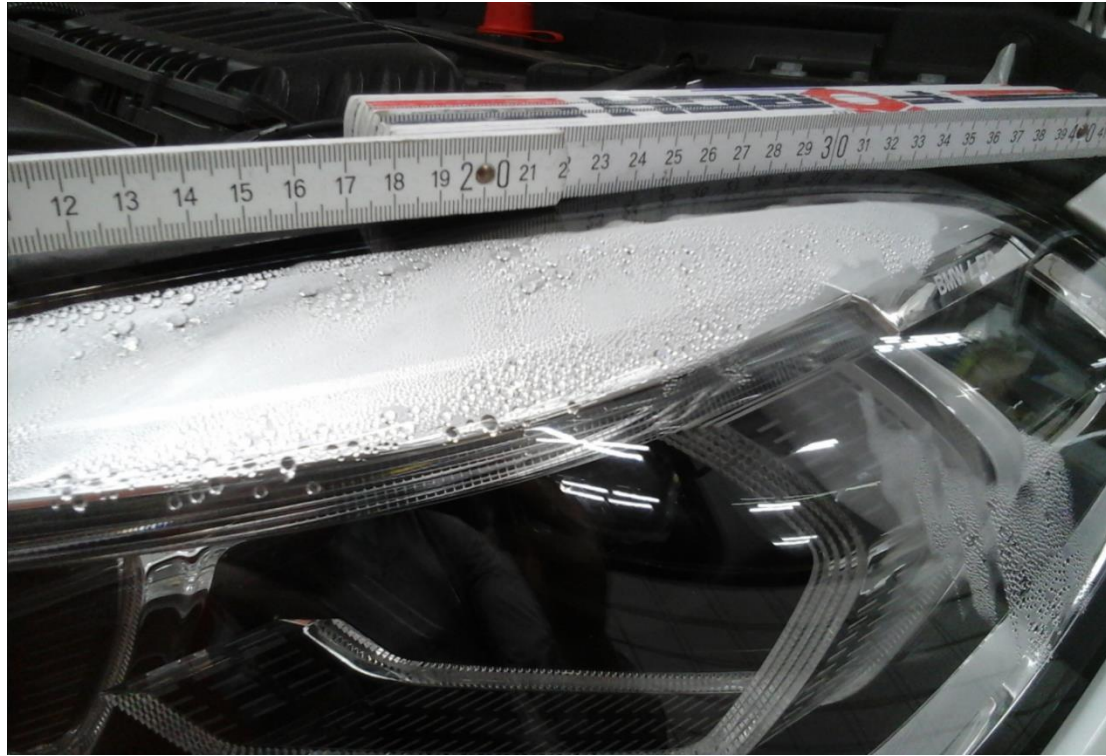
A

B



2

B



B



3

F44

A

A



4

F44

A

A



5

F45

B

B



6

F48

A

B





7

F48

A

B

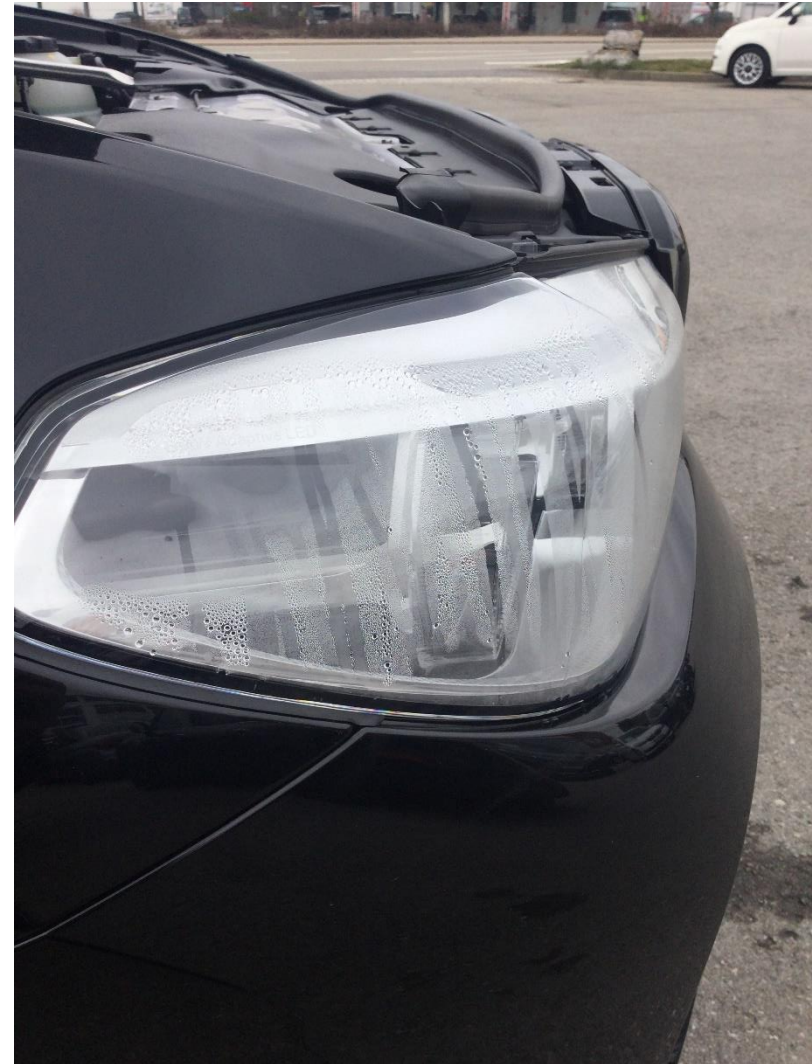


8

G01, G02

B

B



9

G20

A

B



10

G20

B

B



11

A



G30

B



12

B



G32

B



13

B



G05

B



14

A



G06

B





15

A



G06

B



16

B



G07

B



17

A

G12

B



18

A

G12

B



19

B



G12

B



20

G12

A

B



21

G14, G15, G16

A

A

