

**992-Upper Oil Pan Seal Housing Leak**

**Vehicles Affected**

Models	Model Year	Model Type	VIN Range	Vehicle-Specific Equipment
911	Up to 2021	992	N/A	N/A

**Revision History**

Revision	Release Date	Changes
0	August 4, 2021	Original document

**Condition**

Customer complains of an oil leak coming from the rear (engine area) of the vehicle. No relevant fault codes are present in the fault memory. The oil leaks can occur under high load, "spirited driving".

**Technical Background**

The aforementioned condition may be caused by an injection molding defect known as **flashing** which may be responsible for sharp edges in the upper oil pan housing as seen in **Figure 1**.

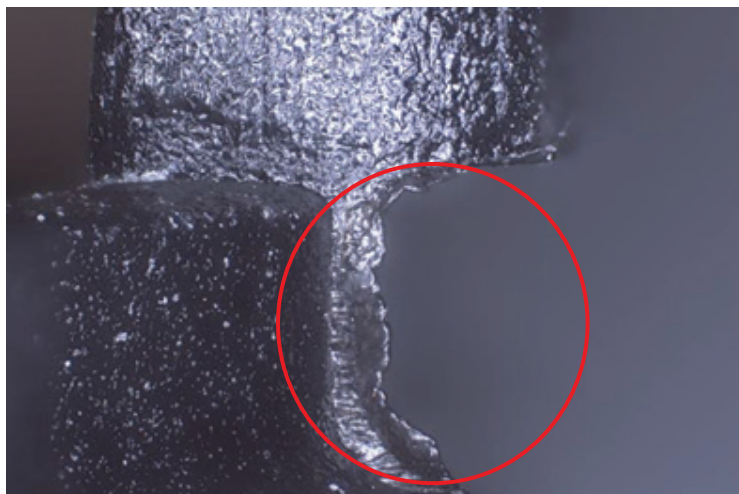
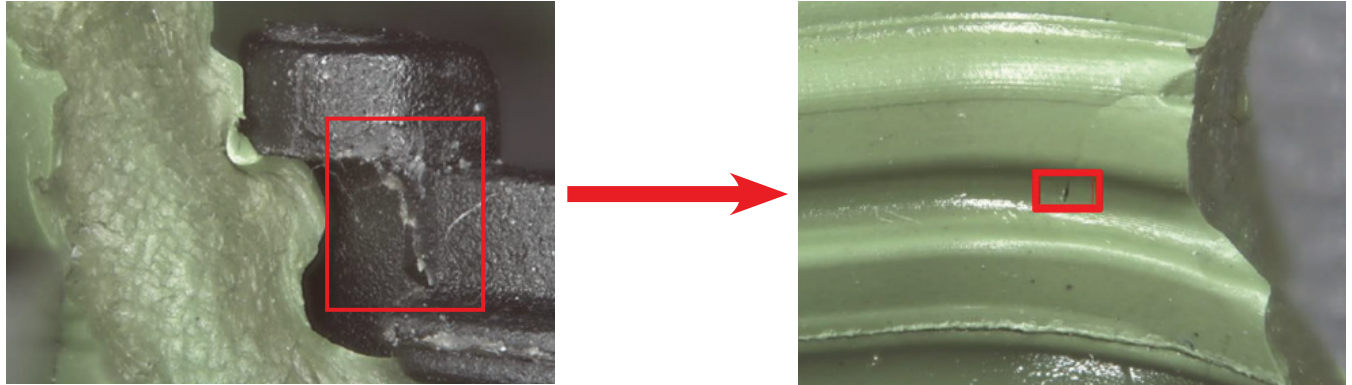


Figure 1 - Sharp Edges on Upper Oil Pan

These sharp edges can potentially cause cuts to seals within the oil pan, and cause improper sealing of oil passages. Oil leaks can result from this in the above mentioned conditions. **Figure 2** below shows the damage on the seals caused by the sharp edges pictured in **Figure 1**.



**Figure 2 - Effect of Injection Molding Defect Causing Damage in Seal**

**Service Information**

Please replace the affected seal (**Part # OPB 115 111 B**) in case any oil leak coming from the rear (engine area) of the vehicle. Before replacing, please remove the plastic body of the new seal and check for the conditions described above. If flashing can be seen on the plastic body, remove it with an appropriate tool and check the seal for damage. If the seal is undamaged, reassemble the plastic body and seal correctly.

**Warranty**

As always, please document the repair completely in PQIS.

For this repair, please code the "cause" as follows:

Cause location: 1750 Oil Pan  
 Cause symptom: 5043 Oil loss

- 17011750 Oil Drain and Fill
- 17501960 Lower Oil pan remove and reinstall
- 17091960 Oil level sender remove and reinstall
- 17501961 Upper Oil pan remove and reinstall
- 17504999 Rework Upper oil pan - Up to 50TU
- 19381754 Coolant drain and fill
- 27068953 Vehicle electrical system battery load

### Search Items

Oil Leak, Oil Pan, Oil, 911, 992

**Important Notice:** Technical Bulletins issued by Porsche Cars North America, Inc. are intended only for use by professional automotive technicians who have attended Porsche service training courses. They are written to inform those technicians of conditions that may occur on some Porsche vehicles, or to provide information that could assist in the proper servicing of a vehicle. Porsche special tools may be necessary in order to perform certain operations identified in these bulletins. Use of tools and procedures other than those Porsche recommends in these bulletins may be detrimental to the safe operation of your vehicle, and may endanger the people working on it. Properly trained Porsche technicians have the equipment, tools, safety instructions, and know-how to do the job properly and safely. Part numbers listed in these bulletins are for reference only. The work procedures updated electronically in the Porsche PIWIS diagnostic and testing device take precedence and, in the event of a discrepancy, the work procedures in the PIWIS Tester are the ones that must be followed.