

**2.0 Left-Hand Chute Rack Platform -  
2 Chute**

**Date:** August 4, 2021  
**Bulletin Name:** FDM-SVC-003  
**Model:** Oshkosh S-Series  
**Units Affected:** 2.0 Front Discharge Mixers

**Purpose:**

This bulletin provides instruction for installing a platform on a left-hand side, 2 chute rack. Vehicles before serial number 813916 require drilling the chute rack angle brackets for platform installation.

**Notice:**

- This bulletin should be read and understood in its entirety before performing this procedure.
- All procedures outlined in the bulletin must be performed by skilled service personnel. Refer to the product service manual for descriptions of maintenance procedures.

SAFETY NOTICE
Perform your company's Lockout/Tagout procedure. If your company does not have a Lockout/Tagout procedure, follow OSHA 1910.147 and 1910.146 Confined Space as appropriate.

SAFETY NOTICE
Use appropriate Personal Protective Equipment (PPE) as required by your company.

**Tools and Equipment Required:**

Customer to supply:

- Hand tools
- Drill
- 0.410 inch drill bit
- Torque wrench - foot pounds

**Parts Required:**

Item	Part Number	Description	Qty.
1	A000W004	BRKT, PLTF, CHUTE RK, 2 LH, SVC	1
2	A000A690	NUT, FLG, LKDT .38-16 G8 MB	4
3	A000A531	SCR, FLG, HEX .38-16X1.00 G8 MB	4

**Procedure:**

***Lockout/Tagout***

1. Place unit on a flat surface, engaged parking brake, chock truck tires, and perform your company's Lockout/Tagout procedure. If your company does not have a Lockout/Tagout procedure, follow OSHA 1910.147 and 1910.146 Confined Space as appropriate.
2. The vehicle's BATTERY DISCONNECT switch is located on the left-hand side of the battery box. Use the battery disconnect switch when performing any maintenance so the vehicle cannot accidentally be started.
  - a. Turn the battery disconnect switch (Figure A, Item 1) counterclockwise so the hole on the switch aligns with the hole in the bracket (Figure A, Item 2).

- b. Install the safety lockout device ring (Figure B, Item 1) through the holes on the battery disconnect switch and the bracket.
- c. Install a padlock (Figure B, Item 2) onto the safety lockout device ring, lock it, and put the key in your pocket. If more than one person is working on the vehicle, each person must install his or her own padlock.

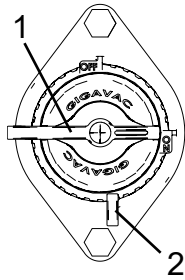


Figure A

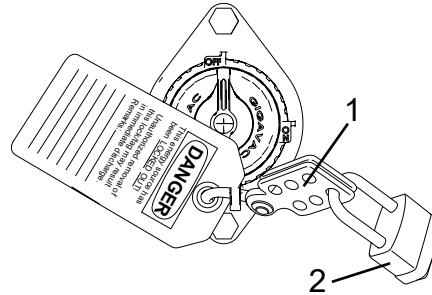


Figure B

**Installation**

**NOTE**

Vehicle serial number 813915 and later  
continue to Step 4.

- 3. Drill two 0.410 inch mounting holes in each chute rack angle bracket. See Figure 1 for hole locations.

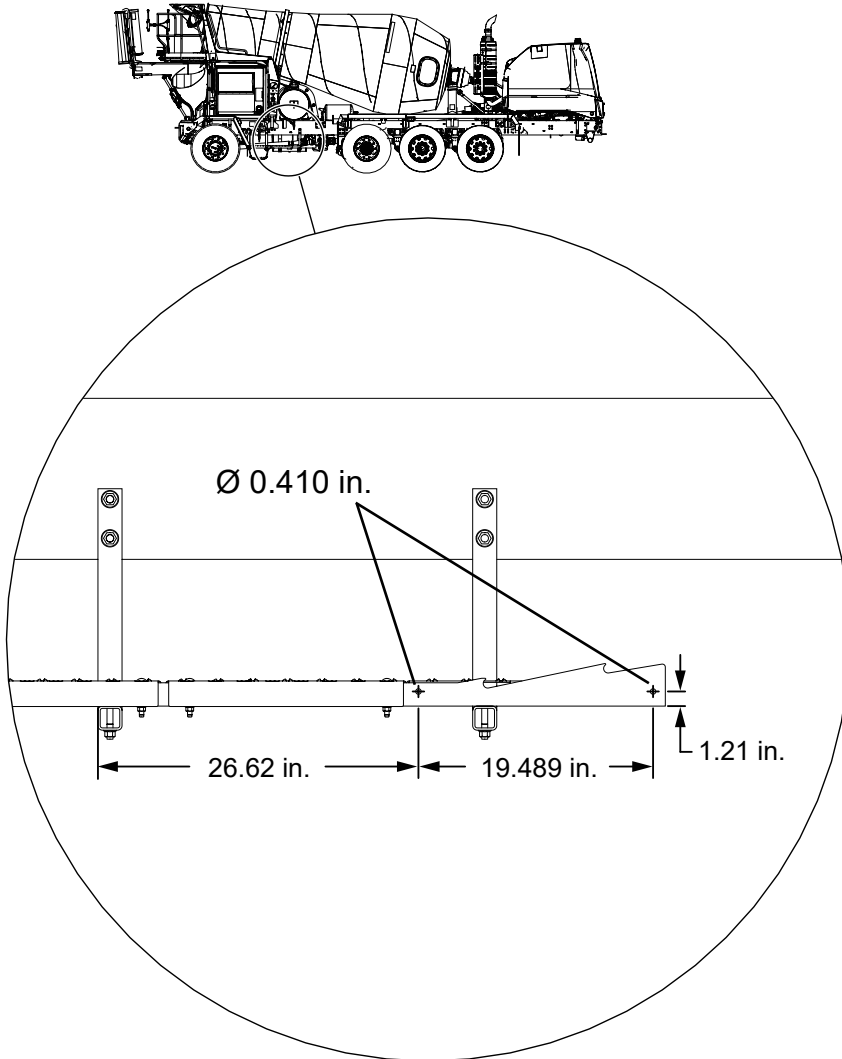


Figure 1

4. Install platform (A000W004) between chute rack angle brackets.

<b>NOTE</b>
<b>Install platform with the larger cutouts positioned toward front of the vehicle.</b>

5. Secure platform to angle brackets with four 0.38-16 x 1.0 inch screws (A000A531) and four 0.38-16 inch flanged lock nuts (A000A690), see Figure 2. Final tighten platform mounting hardware to 35 ft. lbs.

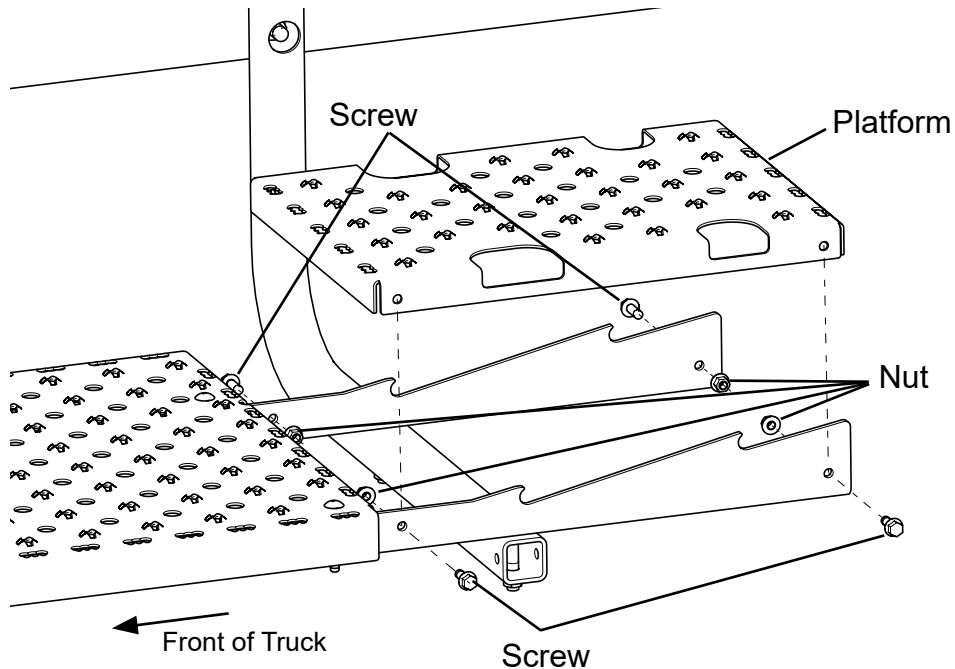


Figure 2

6. Remove lockout/tagout and tire chocks.

### Continuous Improvement:

The change included in this document is part of the McNeilus Continuous Improvement Process.

*McNeilus's quality policy is providing customer satisfaction through innovative products, dedicated service, and a constant focus on continuous improvement.*



(888) 686-7278

[www.streetsmartparts.com](http://www.streetsmartparts.com)