

REFERENCE:	Nova Bus Manuals
SECTION:	02: Doors and Mechanism
RS N°:	MQR 7621-2229
EFFECTIVE IN PROD.:	LD82 (2021AL)

APPLICATION DEADLINE: 2022NO25
CLAIM REFERENCE NUMBER: WB-5067

SUBJECT:	Front and Rear Door Emergency Release Valve Terminals not Locked in Place.
JUSTIFICATION:	The door interlock gets unexpectedly activated as a result of emergency release valve connector intermittent contacts and the driver is no longer able to move the bus, therefore causing OOS condition & road calls.

LEVEL	DESCRIPTION	DIRECT CHARGES		TIME
		LABOUR	MATERIAL	
1	Replacing the Pack-Con Connector with the Aptiv (Delphi) Weather Pack 3-Position Connector.	Novabus	Novabus	0.5 hr
2	–	–	–	–

DISPOSAL OF PARTS

REMOVED PARTS ARE:	DISCARDED*	RETAINED	* Dispose of the unused parts and the defective parts in accordance with local environmental standards in effect.
	Yes	–	

REVISION HISTORY

REV.	DATE	CHANGE DESCRIPTION	WRITTEN BY
NR	2021SE16	Initial release	Devanand

APPROVED BY:

Jean-Nicolas Fournier

Digitally signed by Jean-Nicolas Fournier
DN: cn=Jean-Nicolas Fournier, o=Nova Bus, email=jean-nicolas.fournier@volvo.com, c=CA
Date: 2021.09.22 13:49:49 -04'00'

PAGE 1 OF 9

MATERIAL

QTY	PART N°	REV.	DESCRIPTION
LEVEL 1			
2	561782	–	Weather Pack 3-Position Connector SH
6	12089188	–	Terminal Weather Pack Female
10	561565	–	Wire Seal 20-16 GRN
4	561783	–	Cavity Plug
4	12124582	–	Terminal Weather Pack Male
2	561781	–	Weather Pack 3-Positions Connector PH
4	15324985	–	Seal Wire
LEVEL 2			
–	–	–	–
SHOP SUPPLY			
–	–	–	–

The BOM cater for the possible three configurations whereby the Emergency Door Release Valves from Vapor can be connected:

1. Only on the Nova Bus Harness
2. Only on the Vapor Baseplates
3. On both the Nova Bus Harness and the Vapor Baseplate.

Note:

LC28 is a 60' bus with two doors and all their Emergency Release Valves are connected on the Nova Bus Harnesses.

Materials will be available within 53 days once your order has been placed. To order, please contact Prevost Parts by phone at 1-800-771-6682, by fax at 1-888-668-2555 or by email at prevostparts.commandes@volvo.com. Specify document number, quantity of parts required and shipping address.

CLIENT	ORDER	ROAD NUMBER		VIN (2NVY/4RKY...)		QTY
		FROM	TO	FROM	TO	
Academy Busline - New Jersey	LC95	—	—	L82J2L9777559	L82J9L9777560	2
Ann Arbor Area Transportation Authority Michigan - AAATA	LD05	2000	2000	L82J9L9777669	L82J9L9777669	1
Capital Area Transportation Authority Michigan - CATA	LD34	719	730	L82J8L9777730	L82J2L9777741	12
CHARM city Baltimore - Maryland	LD37	1910234	1910239	L82JXL9777745	L82J3L9777750	6
Houston Texas - Metro	LC92	2502	2534	L82J8L9777601	L82J3L9777618	33
Maryland Transit Authority - MTA	LC27	20002	20030	L82JXL9777602	L82J4L9777658	29
Maryland Transit Authority - MTA	LC28	20032	20070	S92J5L9777628	S92J3L9777689	39
RMA World wide chauffeured Transportation	LC98	N/A	N/A	L82J6L9777693	L82J7L9777704	12
San Antonio Texas	LD11	726	738	L82K1L9777562	L82K8L9777574	13
San Antonio Texas	LD12	988	989	L82KXL9777575	L82K1L9777576	2
San Antonio Texas	LC70	801	806	L82K3L9777577	L82K3L9777577	6
San Antonio Texas	LD13	739	747	L82K4L9777619	L82K4L9777619	9
San Juan Puerto Rico	LD01	2020-01	2020-01	L82J0L9777561	L82J0L9777561	1
San Juan Puerto Rico	LD32	2021-01	2021-10	L82J5L977751	L82J6L977760	10

**WARNING**

Follow your internal safety procedures.

PROCEDURE

- 1.1. Park the vehicle on an even surface with transmission on neutral (N).
- 1.2. Apply the parking brake.
- 1.3. Set the master control switch to the STOP position (see figure 1).

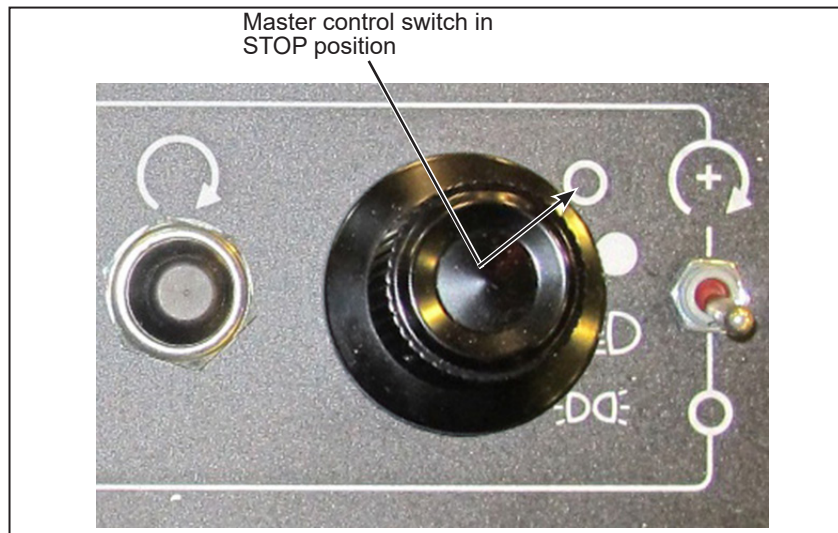


Figure 1 - Master Control Switch in STOP Position

- 1.4. Set the battery disconnect switch in the battery compartment to the OFF position (see figure 2).

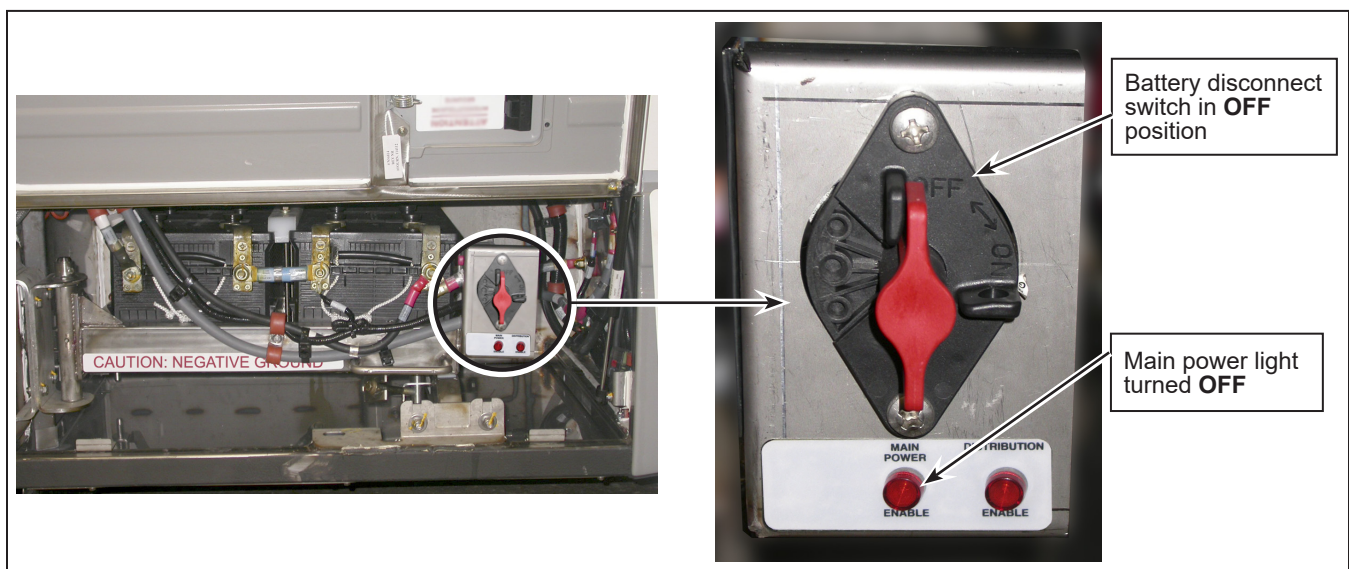


Figure 2 - View of Battery Disconnect Switch

- 1.5. Remove the Pack-Con Connector (see figure 3).

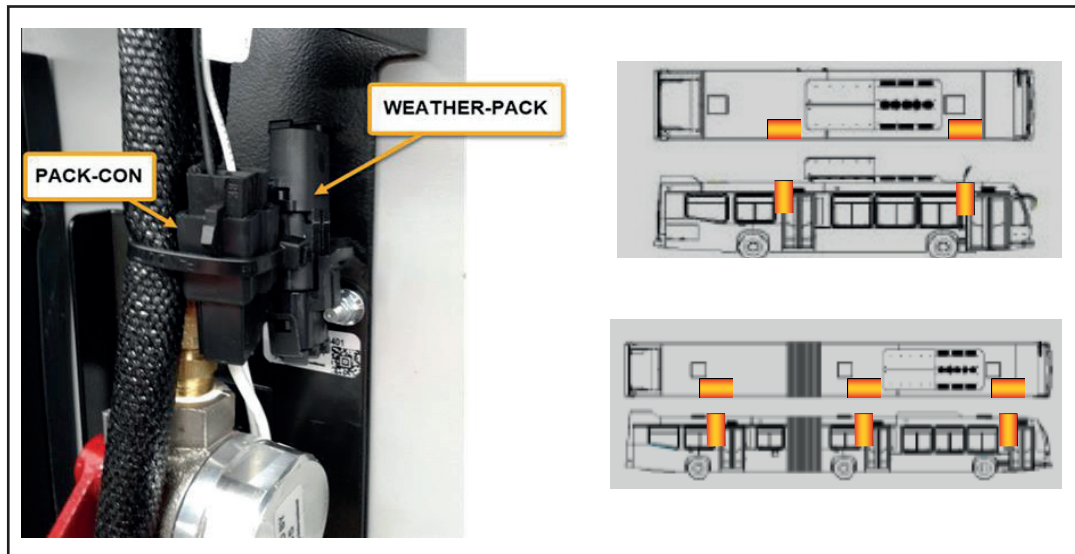


Figure 3 - View of Pack-con Connector

- 1.6. Slides the seals into the wires (see figure 4).

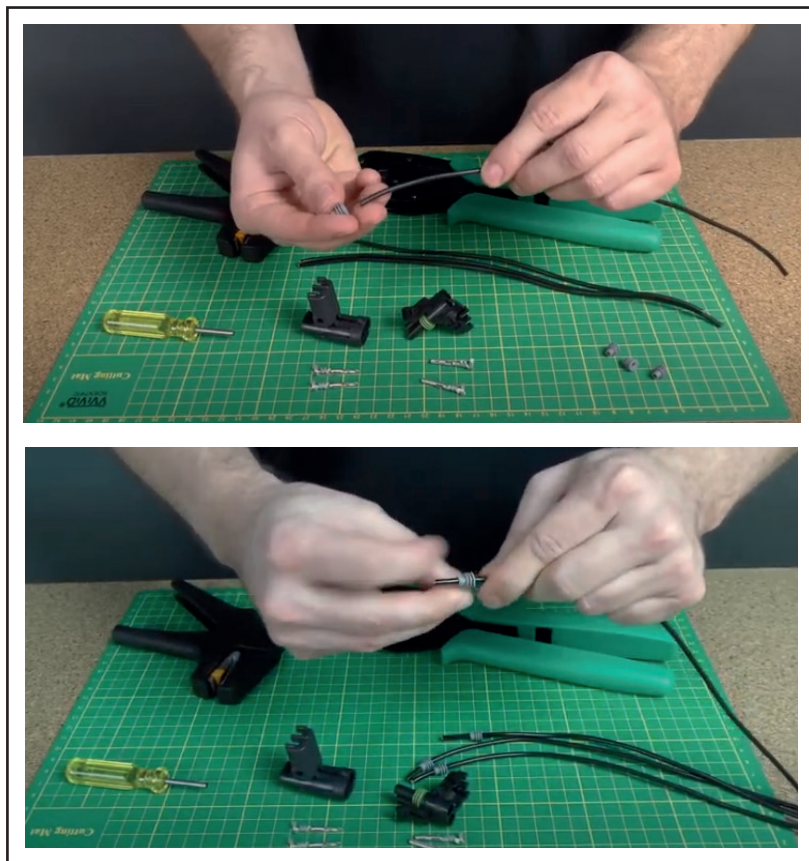


Figure 4 - Inserting Seal into the wire

- 1.7. Strip Wires to 3/16" or 1/4" (see figure 5).



Figure 5 - Stripping of the Wire

- 1.8. Slides the seals down until the seals are flushed with the exposed conductors (see figure 6).



Figure 6 - Sliding the Seal down

- 1.9. Insert the terminal into the die set of the crimper and hold the terminal (see figure 7).

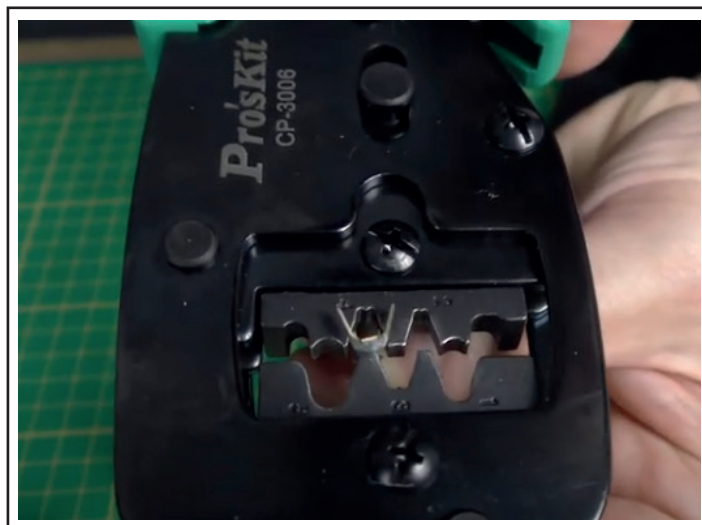


Figure 7 - Insertion of Terminal on the Crimper

- 1.10. Insert the wire in the terminal and first crimp the smaller tab of the terminal (see figure 8).



Figure 8 - Crimping the Smaller Tab on the Terminal

- 1.11. Crimp the larger tab around the seal (see figure 9).



Figure 9 - Crimping the Larger Tab on the Terminal

- 1.12. Repeat the steps with all the wires.

- 1.13. Insert the Male Terminal into the Male Housing and snap the retainer shut (see figure 10).

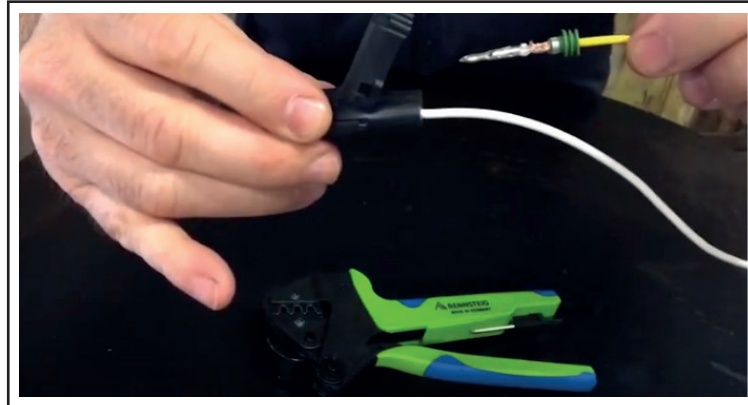


Figure 10 - Insertion of Male Terminal into the Male Housing

- 1.14. Insert the Female Terminal into the Female Housing and snap the retainer shut (see figure 11).

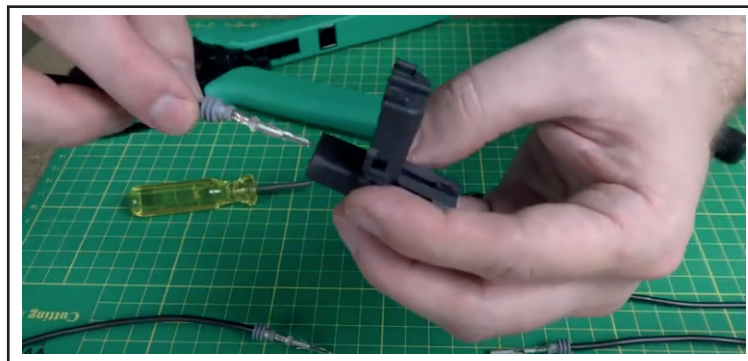


Figure 11 - Insertion of Female Terminal into the Female Housing

- 1.15. Insert the Cavity Plug in the unused channel of the Weather Pack 3-Position Connector. (see figure 12)

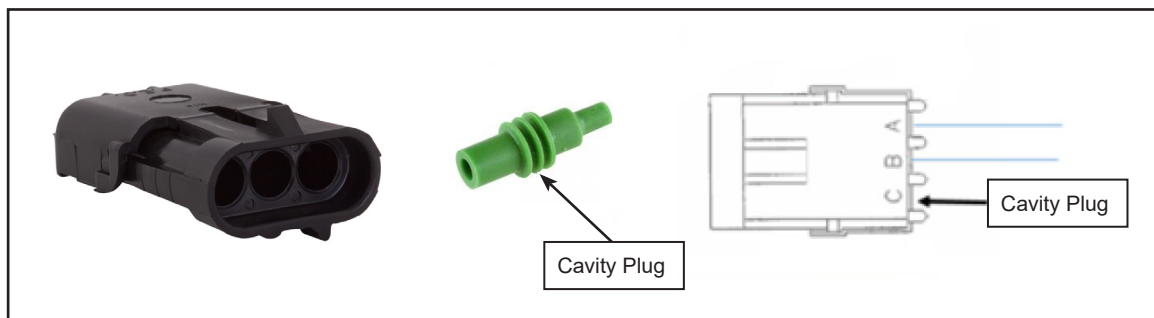


Figure 12 - Insertion of Cavity Plug in Weather Pack Connector

1.16. Assemble/Connect the Weather Pack Connector (see figure 13).



Figure 13 - Assemble the Weather Pack Connector



Figure 14 - View of Weather Pack Connector

1.17. Return the bus to service.❖