



N591NAS1

TECHNICAL BULLETIN

08 SEP 2021

© Jaguar Land Rover North America, LLC

NOTE: The information in Technical Bulletins is intended for use by trained, professional Technicians with the knowledge, tools, and equipment required to do the job properly and safely. It informs these Technicians of conditions that may occur on some vehicles, or provides information that could assist in proper vehicle service. The procedures should not be performed by 'do-it-yourselfers'. If you are not a Retailer, do not assume that a condition described affects your vehicle. Contact an authorized Land Rover service facility to determine whether this bulletin applies to a specific vehicle.

SECTION:

100-00

SUBJECT/CONCERN:

Service Action: Incorrect 20-Inch Wheels Installed

AFFECTED VEHICLE RANGE:

MODEL:	MODEL YEAR:	VIN:
Discovery (LR)	2021-2022	444933-456345

MARKETS:

CANADA, USA

CONDITION SUMMARY:

SITUATION:

A potential issue has been identified on certain Land Rover vehicles within the listed Affected Vehicle Range where vehicles have been installed with the incorrect 20 inch wheel style.

ACTION:

Retailers are required to HOLD affected new vehicles that are within your control and refrain from releasing the vehicles for new vehicle sale pending completion of the procedure(s) detailed in this Technical Bulletin. Unsold vehicles should have this performed as part of the Pre-Delivery Inspection (PDI) process but must have it completed prior to vehicle handover to the customer.

Affected vehicles already in the hands of customers should be updated at the next available opportunity.

PARTS INFORMATION

The parts below should be ordered through Jaguar Land Rover (JLR) in the normal manner.

DESCRIPTION	PART NUMBER/SUNDRY CODE	QTY/VALUE*	% OF VEHICLES REQUIRING THIS PART**
20-inch Aero Viper alloy style 5011 wheel	LR142066	4	24
20-inch Aero Viper alloy style 5011 wheel	LR142066	5	19
20-inch Discus alloy style 5122 wheel	LR142067	4	5
20-inch Discus alloy style 5122 wheel	LR142067	5	1
Rubber valve kit	LR156917	1	As required
Metal valve kit	LR043163	1	As required
Customer reimbursement	ZZZ001	\$1.30	N/A

* An allowance of \$1.30 USD or local equivalent has been provided under option code A to enable a related customer reimbursement claim to be submitted following procedures detailed below, should the customer opt to keep the current wheels.

** Estimated percentage of parts required for replacement.

S R O S

DESCRIPTION	SRO	TIME
N591 - Exchange 4 alloy wheels - includes removing 4 tire valves and balancing 4 wheels	99.02.01.35	1.2
N591 - Exchange 5 alloy wheels - includes removing 5 tire valves and balancing 5 wheels	99.02.01.36	1.5
Drive in/drive out	02.02.02	0.2

NOTE:

Repair procedures are under constant review, and therefore times are subject to change; those quoted here must be taken as guidance only. Always refer to TOPIx to obtain the latest repair time.

WARRANTY INFORMATION

NOTE:

Use the Jaguar Land Rover claims submission system to make sure that a vehicle is eligible for this program prior to undertaking any rework action.

At the time of confirming a booking for vehicle repair, make sure that all open Recall and Service Actions are identified to make sure the correct parts are available and adequate workshop time is allocated for repairs to be completed at one visit.

Warranty claims should be submitted quoting Program Code N591 with the relevant Option Code from the table below. As Option Codes are used there is no requirement for you to enter SROs or parts, these are included for information only.

This program is valid for a limited time only. Warranty claims with a repair date prior to the July 31, 2023 closure date must be submitted for payment within 30 calendar days of

completion of the repair.

PROGRAM CODE	OPTION	DESCRIPTION	SRO	TIME	PART NUMBER/SUNDRY CODE	QTY/VALUE*
N591	A	Customer keeps current wheels - reimburse paid feature cost	N/A	N/A	ZZZ001	\$1.30
N591	B	N591 - Exchange 4 alloy wheels - includes removing 4 tire valves and balancing 4 wheels	99.02.01.35	1.2	LR142066 LR156917	4 1
N591	C	N591 - Exchange 4 alloy wheels - includes removing 4 tire valves and balancing 4 wheels Drive in/drive out	99.02.01.35 02.02.02	1.2 0.2	LR142066 LR156917	4 1
N591	D	N591 - Exchange 4 alloy wheels - includes removing 4 tire valves and balancing 4 wheels	99.02.01.35	1.2	LR142066 LR043163	4 1
N591	E	N591 - Exchange 4 alloy wheels - includes removing 4 tire valves and balancing 4 wheels Drive in/drive out	99.02.01.35 02.02.02	1.2 0.2	LR142066 LR043163	4 1

PROGRAM CODE	OPTION	DESCRIPTION	SRO	TIME	PART NUMBER/SUNDRY CODE	QTY/VALUE*
N591	F	N591 - Exchange 5 alloy wheels - includes removing 5 tire valves and balancing 5 wheels	99.02.01.36	1.5	LR142066 LR156917	5 1
N591	G	N591 - Exchange 5 alloy wheels - includes removing 5 tire valves and balancing 5 wheels Drive in/drive out	99.02.01.36 02.02.02	1.5 0.2	LR142066 LR156917	5 1
N591	H	N591 - Exchange 5 alloy wheels - includes removing 5 tire valves and balancing 5 wheels	99.02.01.36	1.5	LR142066 LR043163	5 1
N591	J	N591 - Exchange 5 alloy wheels - includes removing 5 tire valves and balancing 5 wheels Drive in/drive out	99.02.01.36 02.02.02	1.5 0.2	LR142066 LR043163	5 1
N591	K	N591 - Exchange 4 alloy wheels - includes removing 4 tire valves and balancing 4 wheels	99.02.01.35	1.2	LR142067 LR156917	4 1

PROGRAM CODE	OPTION	DESCRIPTION	SRO	TIME	PART NUMBER/SUNDRY CODE	QTY/VALUE*
N591	L	N591 - Exchange 4 alloy wheels - includes removing 4 tire valves and balancing 4 wheels Drive in/drive out	99.02.01.35 02.02.02	1.2 0.2	LR142067 LR156917	4 1
N591	M	N591 - Exchange 4 alloy wheels - includes removing 4 tire valves and balancing 4 wheels	99.02.01.35	1.2	LR142067 LR043163	4 1
N591	N	N591 - Exchange 4 alloy wheels - includes removing 4 tire valves and balancing 4 wheels Drive in/drive out	99.02.01.35 02.02.02	1.2 0.2	LR142067 LR043163	4 1
N591	P	N591 - Exchange 5 alloy wheels - includes removing 5 tire valves and balancing 5 wheels	99.02.01.36	1.5	LR142067 LR156917	5 1

PROGRAM CODE	OPTION	DESCRIPTION	SRO	TIME	PART NUMBER/SUNDRY CODE	QTY/VALUE*
N591	Q	N591 - Exchange 5 alloy wheels - includes removing 5 tire valves and balancing 5 wheels Drive in/drive out	99.02.01.36 02.02.02	1.5 0.2	LR142067 LR156917	5 1
N591	R	N591 - Exchange 5 alloy wheels - includes removing 5 tire valves and balancing 5 wheels	99.02.01.36	1.5	LR142067 LR043163	5 1
N591	S	N591 - Exchange 5 alloy wheels - includes removing 5 tire valves and balancing 5 wheels Drive in/drive out	99.02.01.36 02.02.02	1.5 0.2	LR142067 LR043163	5 1

NOTE:

If the customer already has 20-inch Aero Viper alloy style 5011 installed and wants to keep them, please email jlrcamp@jaguarlandrover.com for the campaign to be closed. No reimbursement is to be offered.

Warranty claims should be submitted in accordance with the current [JLR Global Warranty Manual](#), and its amendments, unless stated otherwise in this bulletin.

NOTE:

The option that contains the drive in/drive out allowance may only be claimed when the vehicle has been brought back into the workshop for this action alone to be undertaken.

CUSTOMER REIMBURSEMENT PROCESS IF CUSTOMER PAID FOR WHEEL OPTION

If a customer has paid for the 20-inch Aero Viper alloy style 5011 wheel option, but wishes to keep the 20-inch Discus alloy style 5122 installed, the retailer must directly reimburse the customer and a claim for recovery of this cost should be made using the related damage procedure.

Claims for related damages can only be made when a claim option A has been submitted and paid/accepted.

Claims should be submitted quoting Program Code N591 and by clicking the 'Related Damage' radio button on the claim submission screen. The warranty claim should be submitted using Option Code X as detailed in the table shown below and entering the cost to be reimbursed against the Sundry Code of 'ZZZ999'. All costs should be entered in local currency.

PROGRAM CODE	OPTION	DESCRIPTION	COUNTRY	SRO	TIME	SUNDRY ITEM CODE	VALUE
N591	X	Reimbursement to owner	Canada United States	N/A	N/A	ZZZ999	550.00 CAD 500.00 USD

A copy of the invoice if available must be attached to the repair order for Warranty Audit purposes.

A brief comment should be entered in the 'Technician Comments' field on the claim to itemize and explain the charges.

Only vehicles eligible for Recall Action N591 are included in this process. Only one claim per vehicle will be accepted.

SERVICE INFORMATION

If the vehicle was ordered with the optional Aero Viper style 5011 wheels but has been manufactured with the standard Discus style 5122 wheels, a new set of the optional Aero Viper style 5011 wheels can be installed to match the specification ordered. The customer can ,however, choose to receive a reimbursement for the option cost, if they would prefer to keep the standard Discus style 5122 wheels.

If the vehicle was ordered with the standard Discus style 5122 wheels but has been manufactured with the optional Aero Viper style 5011 wheels, a new set of the standard Discus style 5122 wheels can be installed to match the specification ordered. In this instance, there will be no reimbursement offered should the customer wish to keep the current wheels as they were provided at no additional cost.

If the customer has chosen to have the wheels installed to their vehicle renewed to match the specification ordered, complete the Service Instruction below.



1. This image shows the optional Aero Viper style 5011 wheel.



2. This image shows the standard Discus style 5122 wheel.

SERVICE INSTRUCTION

NOTES:

- Before commencing any vehicle repair please make sure the vehicle owner has provided their instructions on which repair option, is required, if any.
- Some variation in the illustrations may occur, but the essential information is always correct.
- Some components shown removed for clarity.

All vehicles

1.

NOTE:

Mark the position of each wheel and tire, using a non permanent method of marking, so they can be installed in the same position.

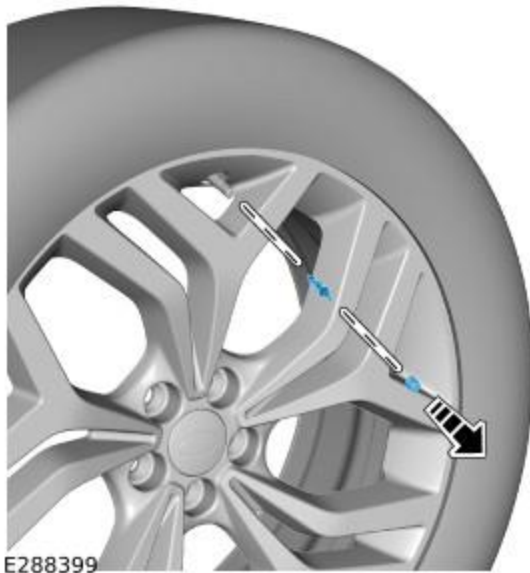
Remove all 4 wheel and tire assemblies (see TOPIx Workshop Manual section 204-04: Wheels and Tires - Removal and Installation - Wheel and Tire).

Vehicles with a full-size spare wheel and tire only

2. Remove the spare wheel and tire assembly from the vehicle.

All vehicles

3.



Use a suitable tool to remove the valve cap and the insert. Allow the air to fully escape from the tire before attempting to remove the tire from the wheel.

4.

CAUTION:

To avoid damage to the tire low pressure sensor, release the tire bead from the wheel, 180 degrees from the valve.



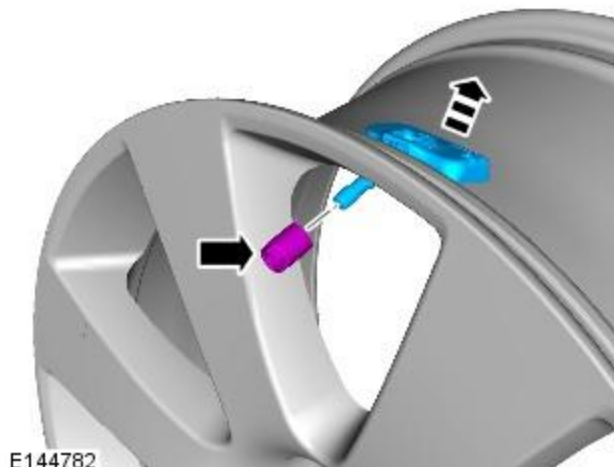
Remove the tire from the wheel.

Vehicles with metal tire lower pressure sensor valves only

5.

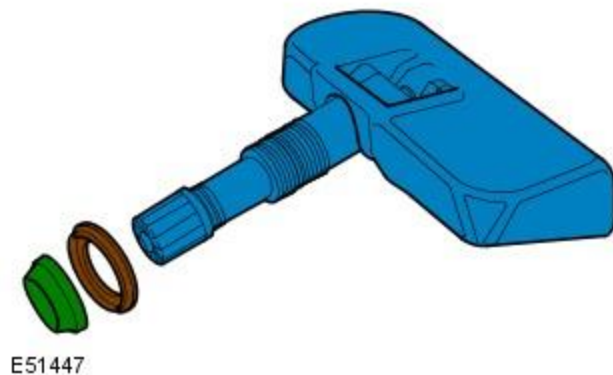
CAUTION:

Take care not to damage the tire low pressure sensor when removing from the wheel.



Remove the sensor retaining nut and then remove the tire low pressure sensor and valve assembly.

6.



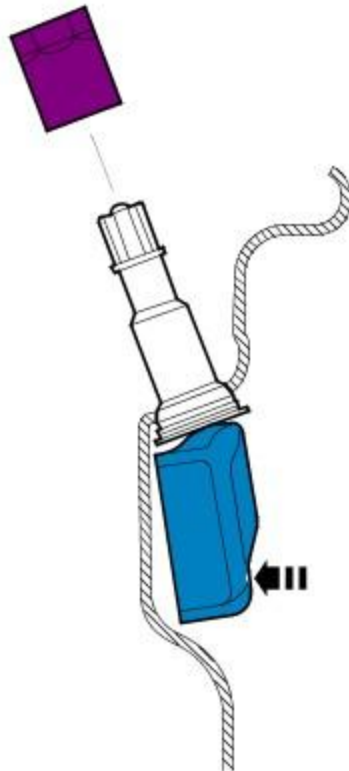
Remove and discard the seal and washer.

7. Discard the wheel.

8.

CAUTIONS:

- Take care not to damage the tire low pressure sensor when installing to the new wheel.
- Do not apply any lubricant to the new valve.
- Make sure that the mating faces are clean and free of foreign material and corrosion.
- Do not use compressed air to clean the sensor. Do not clean the sensor with solvents or cleaning agents of any type, use a clean dry cloth.



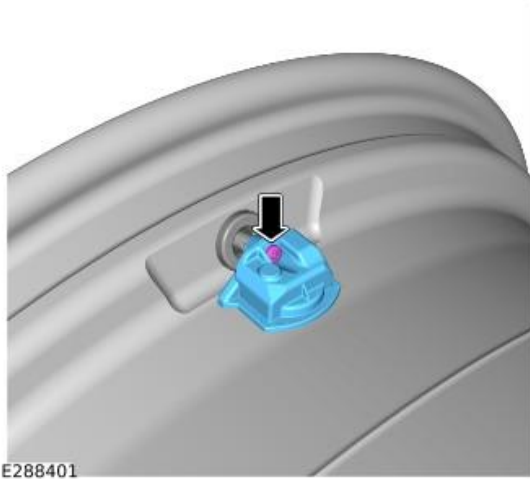
E51449

Install the original tire low pressure sensor into the new wheel.

- Install a new washer, seal and retaining nut making sure the valve remains pressed fully onto its seat.
- Torque: **8 Nm**

Vehicles with rubber tire lower pressure sensor valves only

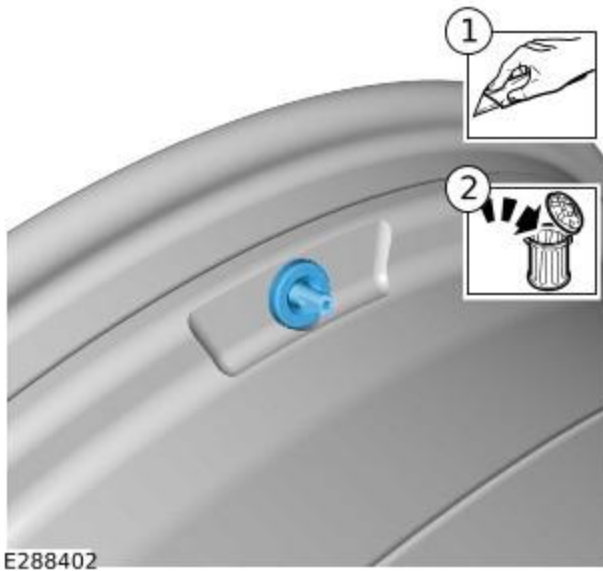
9.



Remove the tire low pressure sensor.

- Remove and discard the bolt.

10.



Use a suitable tool to remove the rubber valve.

1. Cut the rubber valve.
2. Discard the rubber valve.

11. Discard the wheel.

12.



E288404

Remove the valve cap from the new rubber valve.

13.



E288405

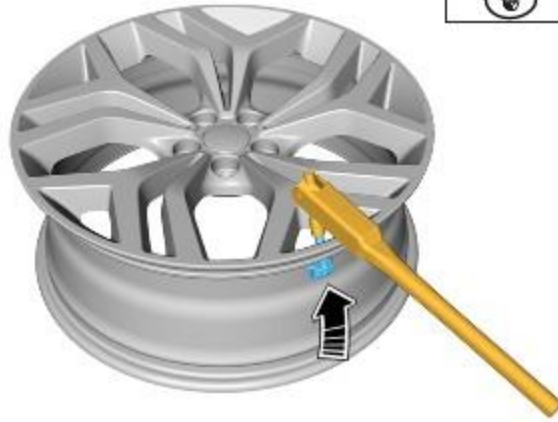
Use the new bolt to install the new rubber valve to the original tire low pressure sensor.

- Torque: **1.4 Nm**
-

14.

CAUTION:

Make sure that the mating faces are clean and free of foreign material and corrosion.

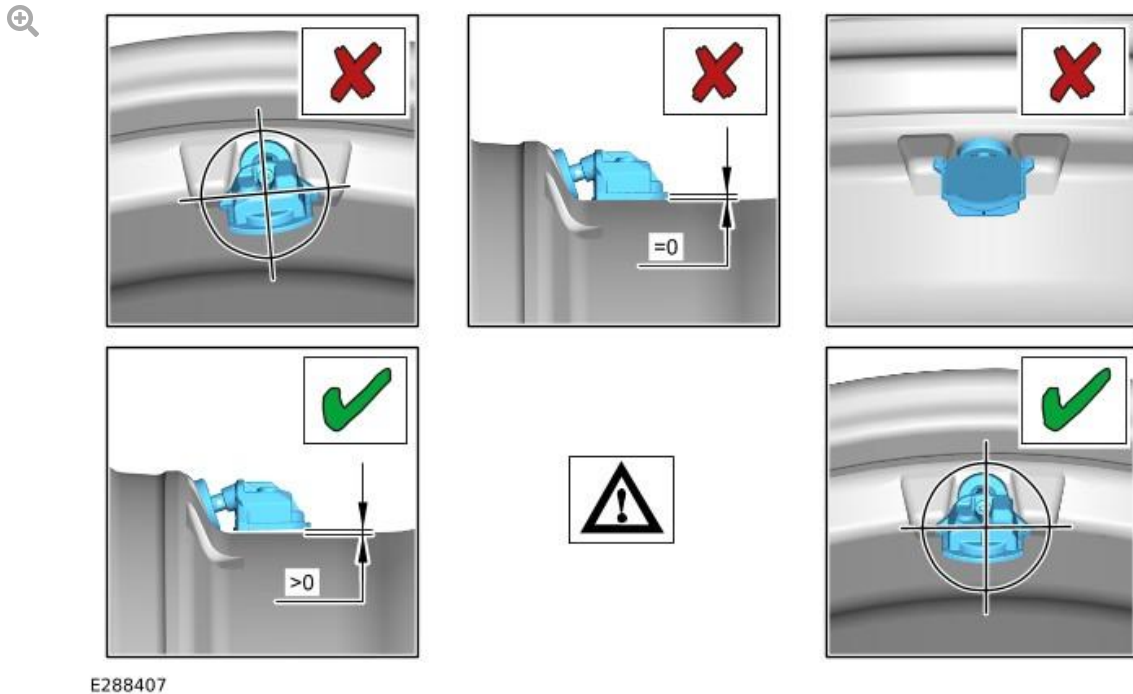
**E288406**

Apply suitable lubricant to the rubber valve mating area and install the assembly with a suitable tool.

15.

CAUTION:

Make sure that the tire pressure sensor and rubber valve assembly is fully installed into the new wheel. Incorrect installation can cause air loss and tire pressure monitoring system malfunction.



Check if the tire low pressure sensor is installed correctly, as shown in the images with a **GREEN '✓'**. If the sensor assembly is installed incorrectly, as shown in the images with a **RED 'X'**, do not try to adjust or rotate the sensor and valve. Remove and install a new rubber valve.

All vehicles

16.

CAUTION:

Take extra care not to damage the tire low pressure sensor during tire installation.

Install the original tire to the new wheel.

17. Inflate the tire to the maximum pressure as stated on the tire sidewall and then deflate to the recommended pressure (see TOPIx Workshop Manual section 204-04: Wheels and Tires - Specification).
 - Install the valve cap.

-
18. Repeat steps 3 to 17 for the remaining wheel and tire assemblies.

-
19. Balance all of the wheel and tire assemblies.

20.

NOTE:

Make sure the wheel and tire assemblies are installed in the same position on the vehicle, using the markings applied in step 1.

Install all 4 wheel and tire assemblies (see TOPIx Workshop Manual section 204-04: Wheels and Tires - Removal and Installation - Wheel and Tire).

Vehicles with a full-size spare wheel and tire only

21. Install the spare wheel and tire assembly.