



SANICON TURBO MACERATOR CLOG, IMPELLER ACCESS MY2016-2022

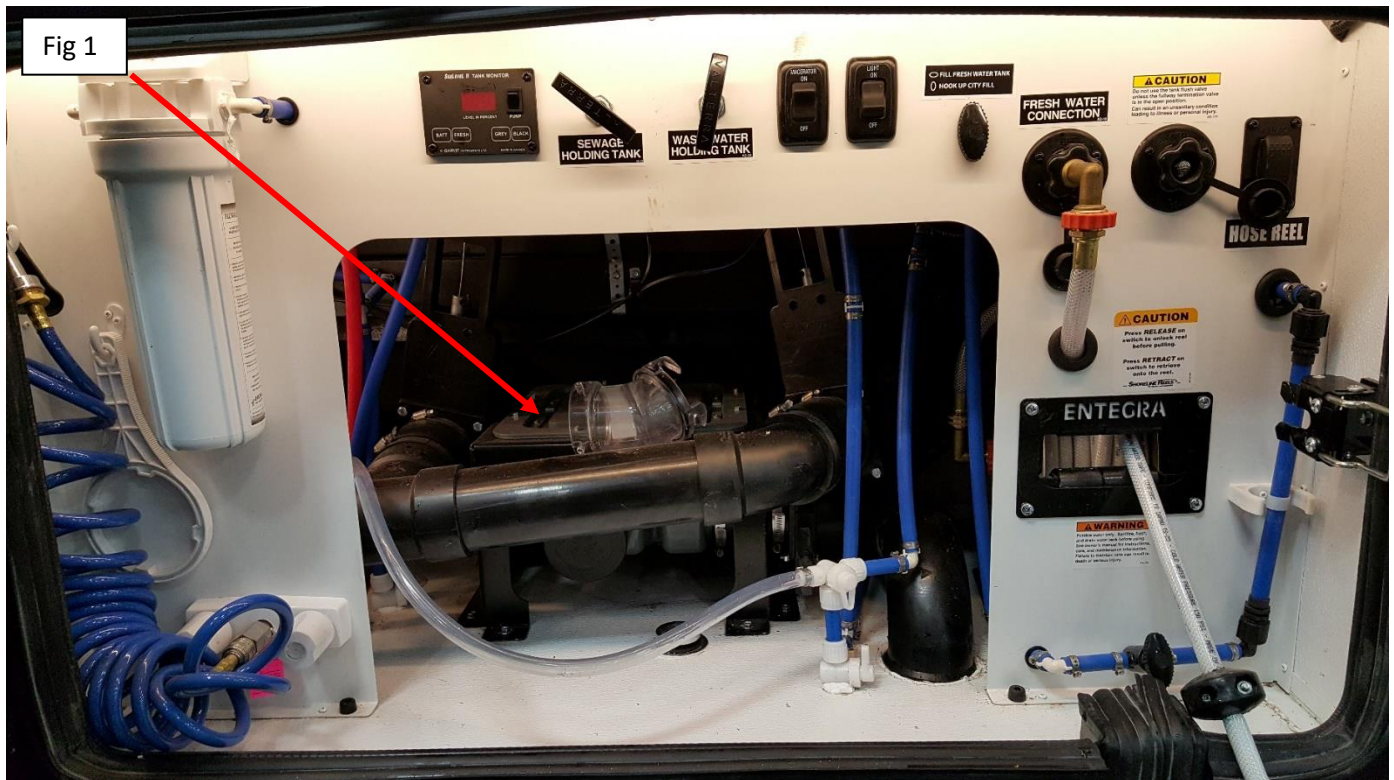
Bulletin Type:	SRP	Publication Date:	September 2021
Bulletin #(s):	21-039	Make(s):	Entegra
Job Code(s):	<i>If affected unit has warranty remaining, submit your claim following the normal process</i>	Model(s):	Embark, Reatta, Reatta XL, Aspire, Anthem, Cornerstone
Flat Rate(s):		Model Year(s):	2016-2022

Incident:	PUMP IS RUNNING BUT NOT PUMPING
Affected Units:	MACERATOR: USED MY2016-2022
Parts list:	1 EA THETFORD: PUMP (PART #0303362) MACERATOR THETFORD SANI-CON TURBO MODEL #97646 WITH 30' HOSE/SLEEVE
Misc. Tools & Supplies:	N/A
Parts Return Information:	N/A

VISUAL DIAGNOSTIC INSTRUCTIONS FOR 2016-2022 MACERATOR

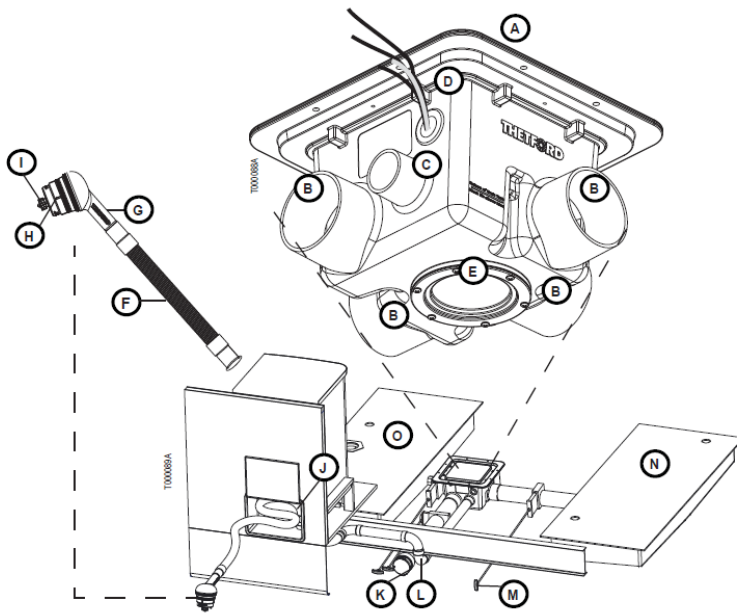
1. If the pump impeller is plugged and block with debris, proceed with inspecting the hose to confirm it is clear.
2. Back flush the system through the 1.5 inch discharge hose.
3. Remove impeller access cover to inspect and remove debris.

4. Location of the macerator (red arrow) in the wet bay, driver side front of drive axle shown in Fig 1.



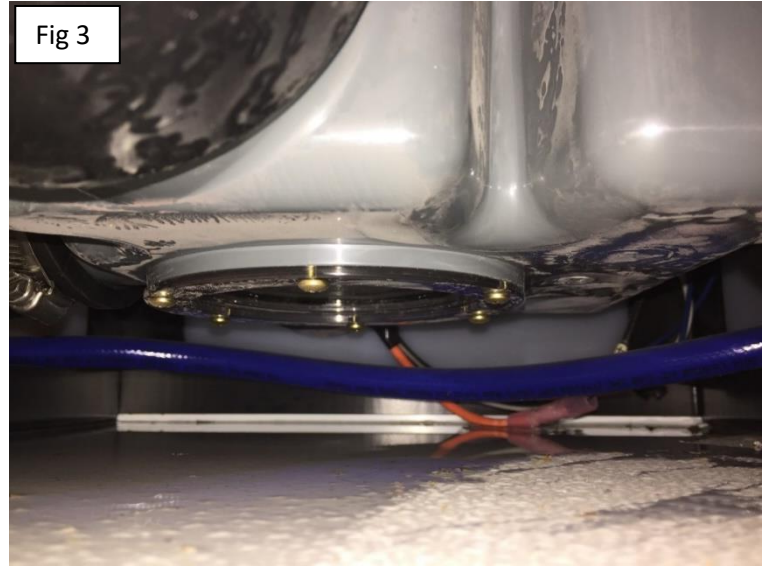
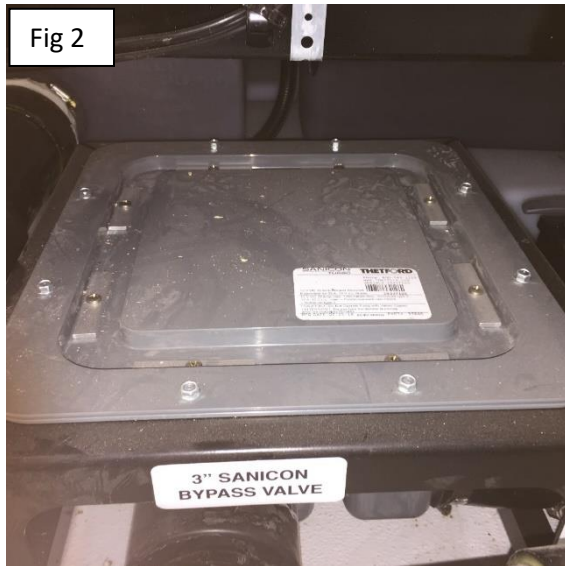
#2. BACK FLUSH THE SYSTEM THROUGH THE 1.5 INCH DISCHARGE HOSE.

1. CONNECT GARDEN HOSE WITH BACKFLO PREVENTER TO THE SMALL NOZZEL CAP AT THE END OF THE 1.5 INCH DISCHARGE HOSE.
2. THE BLACK TANK GATEVALVE SHOULD BE OPEN; THE GRAY TANK GATEVALVE SHOULD BE CLOSED DURING BACKFLUSHING.
3. OPEN THE 1.5 INCH DISCHARGE GATE VALVE AT THE RIGHT HAND SIDE OF THE MACERATOR IN THE WATER BAY.
4. THE THREE INCH EMERGENCY DISCHARGE CAN BE USED TO EMPTY THE SYSTEM IF DESIRED. KEEP THE VALVE CLOSED DURING BACKFLUSHING. VALVE SHOULD BE OPENED WHEN TESTING MACERATOR BETWEEN BACK FLUSHING.
5. WHEN BACK FLUSHING WITHOUT DRAINING AT THE THREE INCH EMERGENCY DISCHARGE. REMOVE HOSE AT THE SMALL NOZZEL CAP TO TEST MACERATOR WITH THE 1.5" DISCHARGE HOSE.

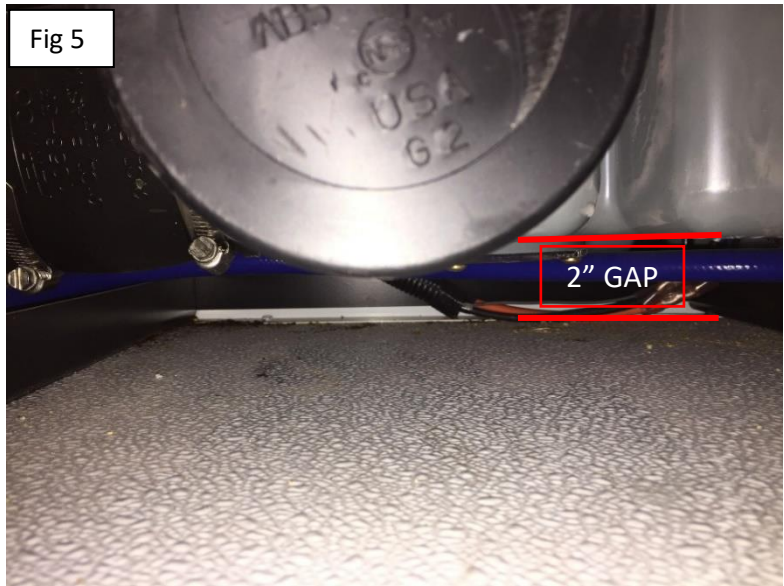
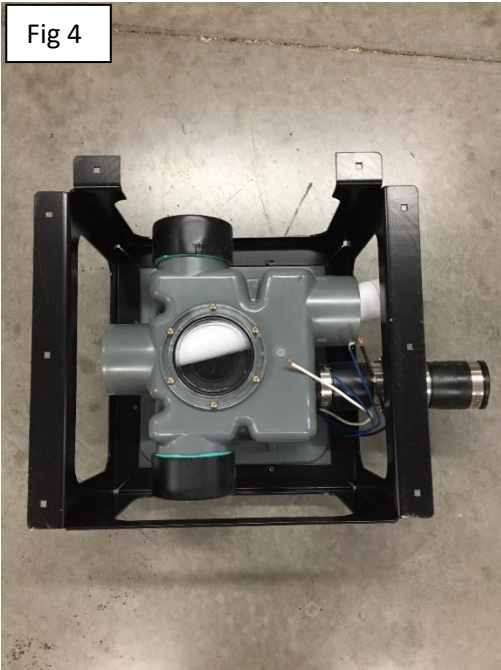


- A. SaniCon TurboTank Assembly
- B. 3" Inlet Ports (4x)
- C. 1.5" Discharge Port
- D. Wire Lead Exit
- E. Pump Impeller Access Cover
- F. 1.5" Discharge Hose
- G. Universal Nozzle
- H. Large Nozzle Cap
- I. Small Nozzle Cap
- J. Hose Storage Compartment
- K. Bayonet RV Drain (manual override)
- L. Hard plumbing to discharge hose
- M. Gate Valve (black, gray, manual over-ride); number of valves vary according to coach setup.
- N. Gray Tank
- O. Black Tank

5. Note: If backflush procedure did not work, it will be necessary to open the macerator either at top shown in Fig 2 or bottom shown in Fig 3.



6. Access cover is located on the bottom of the macerator shown in Fig 4 in the wet bay. There is a two inch gap between the access cover and the floor of the wet bay which is shown in Fig 5.



7. A 5" hole should be cut into the floor of the wet bay directly under the access cover from under the unit. The hole can then be covered and sealed for future access shown in Fig 6.



Jayco's sole obligation under our limited warranty is to repair or replace defective materials and/or workmanship deemed our responsibility as determined by Jayco in our sole discretion. Jayco reserves the right to use new and/or remanufactured parts or materials of similar quality to complete any work, and to make parts and/or design changes as appropriate without notice to anyone. Jayco designs and/or materials changes are done without obligation to incorporate such changes in previously manufactured product. Jayco makes every reasonable effort to ensure field remedies will not adversely affect performance and/or safety of the unit. This field remedy is not intended to extend to future performance of this RV, or any of its materials, components or parts beyond the standard warranty period. The RV owner's obligation to notify Jayco, or one of its independent, authorized dealers, of a claimed defect does not modify any obligation placed on the RV owner to contact Jayco directly when attempting to pursue remedies under state or federal law. Jan. 2019.

903 South Main Street • P.O. Box 460 • Middlebury, IN 46540