



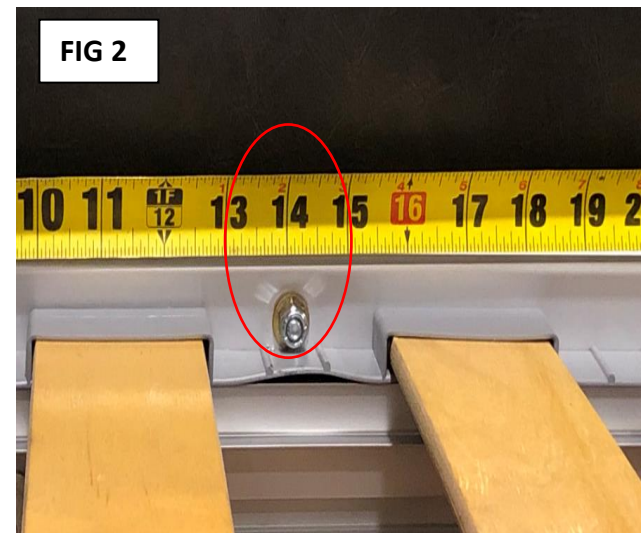
Installation of cabinet support brackets-Euro Bunk option

Bulletin Type:	TSB	Publication Date:	October 2021
Bulletin #(s):	21-009	Make(s):	Jayco
Job Code(s):	9801568	Model(s):	Pinnacle
Flat Rate(s):	2 Hours	Model Year(s):	2018

Incident:	Euro Bunk (option) – The full width cabinet mounted below the Euro Bunk does not have proper supports.
Affected Units:	2018 Pinnacle 37RSTS (RS) Floorplan with (Optional) Euro Bunk.
Parts Kit: <u>21-009JT</u>	<p>Parts Kit Contents:</p> <ul style="list-style-type: none"> - 2ea. Part A Steel Support Brackets (Part# 2027603) - 2ea. Part B Flat Steel Support Brackets (Part# 2027604) <p>Purchase locally:</p> <ul style="list-style-type: none"> - 2ea. ¼”-20 x 1 ¾” Grade 5 Hex Head Cap Screw - 2ea. ¼”-20 x 2” Grade 5 Hex Head Cap Screw - 8ea. ¼” Dia. SAE Flat Washers - 4ea. ¼-20 UNC Nylon insert lock nuts - 8ea. Screw RW Quad 8.00 X 1.12 DT
Misc. Tools & Supplies:	<ul style="list-style-type: none"> - Compact Drill - Socket Set - Drill Bits - Screw Bits - Tape Measure
Parts Return Information:	N/A

INSTRUCTIONS - EURO BUNK CABINET SUPPORT INSTALLATION

1. Inspect the unit to confirm that there is a full width cabinet installed under the Euro Bunk as shown in Fig 1.
2. Lower the Euro Bed to approximately 4' from the floor. This will be a good working height.
3. Remove the mattress to reveal bed slats and rear panel mounting screws shown in Fig. 2.
4. Measure along the back of the bunk, 14" from the left side for the securement location of the first steel support bracket Fig 2.
5. Remove the existing fastener securing the back panel Fig 2. Use this hole to secure the steel Bracket (Part A) with the $\frac{1}{4}$ - 20 Bolt and nut.
6. Bracket support fits between bed frame and back panel as shown in Fig 3.



7. Secure the bottom of Part A with two wood screws as shown in Fig 3.
8. Repeat steps 4 – 6 for the right side, measuring the same 14" from the right side to locate the fastener location.

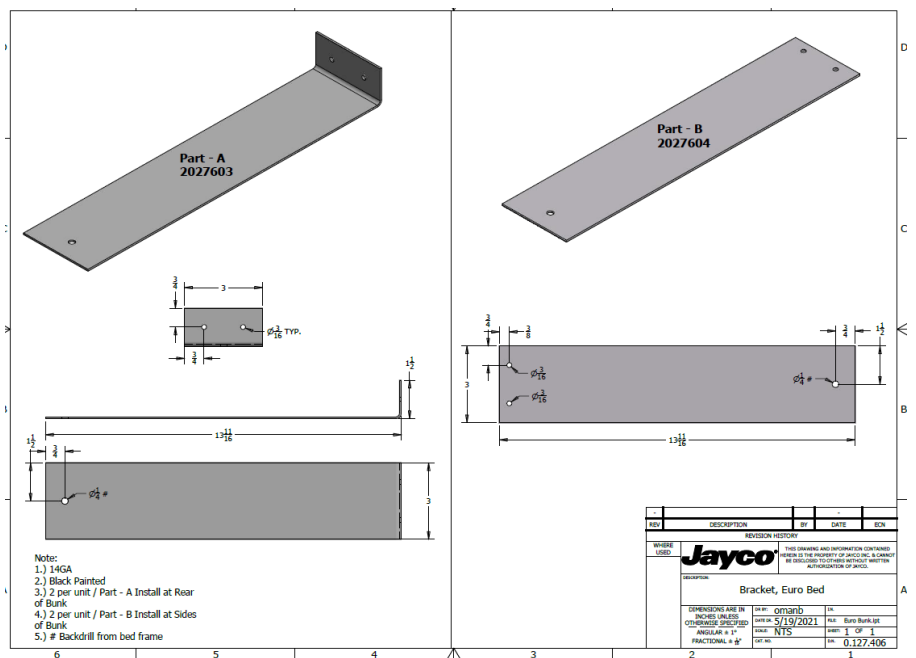


9. Review bracket print to the right and install Bracket support Part B at the left side of the bunk shown in figure 4.

10. Measure from the front of the bunk 2 inches for the installation of the 1/4 -20 bolt shown in fig 5 and the two wood screws which are shown in Fig 4.

11. Repeat steps for the right side

12. Installation is now complete. Check operation of the Euro Bunk.



Jayco's sole obligation under our limited warranty is to repair or replace defective materials and/or workmanship deemed our responsibility as determined by Jayco in our sole discretion. Jayco reserves the right to use new and/or remanufactured parts or materials of similar quality to complete any work, and to make parts and/or design changes as appropriate without notice to anyone. Jayco designs and/or materials changes are done without obligation to incorporate such changes in previously manufactured product. Jayco makes every reasonable effort to ensure field remedies will not adversely affect performance and/or safety of the unit. This field remedy is not intended to extend to future performance of this RV, or any of its materials, components or parts beyond the standard warranty period. The RV owner's obligation to notify Jayco, or one of its independent, authorized dealers, of a claimed defect does not modify any obligation placed on the RV owner to contact Jayco directly when attempting to pursue remedies under state or federal law. Jan. 2019.

903 South Main Street • P.O. Box 460 • Middlebury, IN 46540