



## Volvo Chassis - Model VN - Loss Of Cab Heat, Bunk Heat Working - Model Year 2016 And Newer



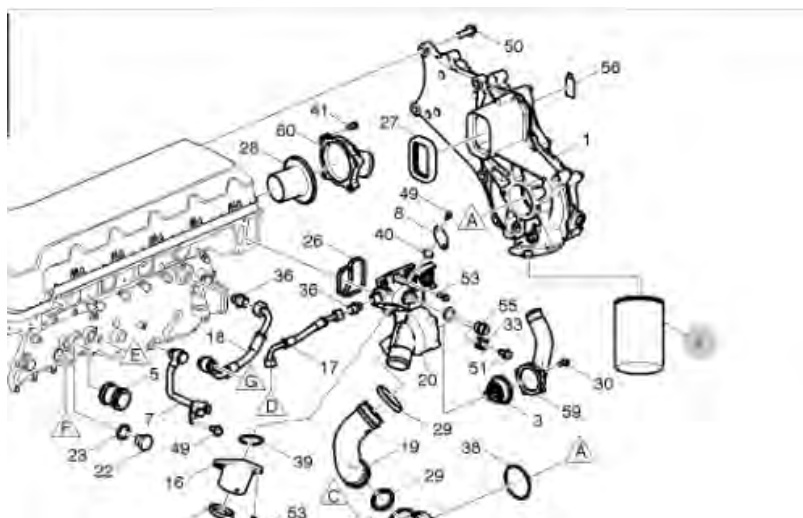
> Internal Content

### If loss of cab heat is experienced:

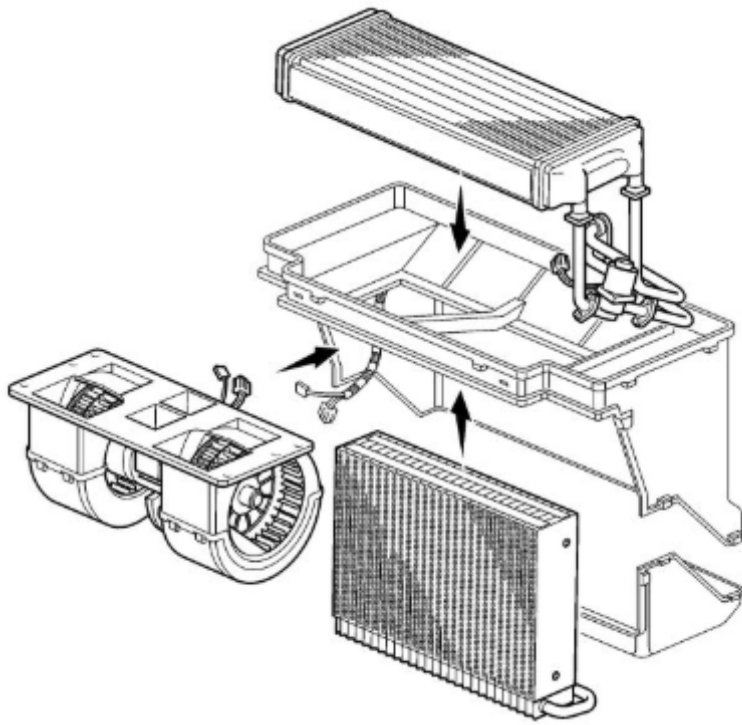
1. Run the vehicle until the coolant is up to operating temperature.

- Drain coolant from the system.
- Flush the system with water until the water runs out clear.

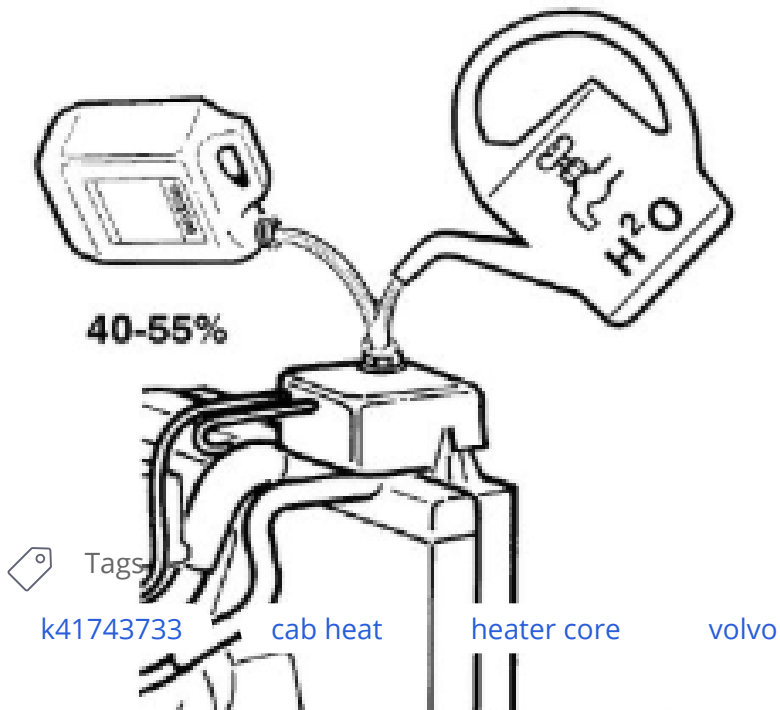
2. Replace the coolant filter (if equipped).



3. Flush the heater core from both directions with hot water. The water should run clear. ([Operation 8732-03-02-02 Heater Core, Cab, Replacement](#) )



4. Fill the system with new Volvo coolant ( premix or concentrate with distilled or deionized water ) and clean or distilled water as necessary. The mixture should be between 40% and 55% depending on the region in which the vehicle is operating.



Live UI

5. Start the vehicle and allow the engine to reach operating temperature.

Verify that there are no links and images in the content.

### Related links and attachments

No links or attachments available



### Feedback

[Give feedback](#)

to help improve the content of this article

## 87612-2 Heater Core, Cab, Replacement

---

You must read and understand the precautions and guidelines in Service Information, group 80, General Safety Practices before performing this procedure. If you are not properly trained and certified in this procedure, ask your supervisor for training before you perform it.

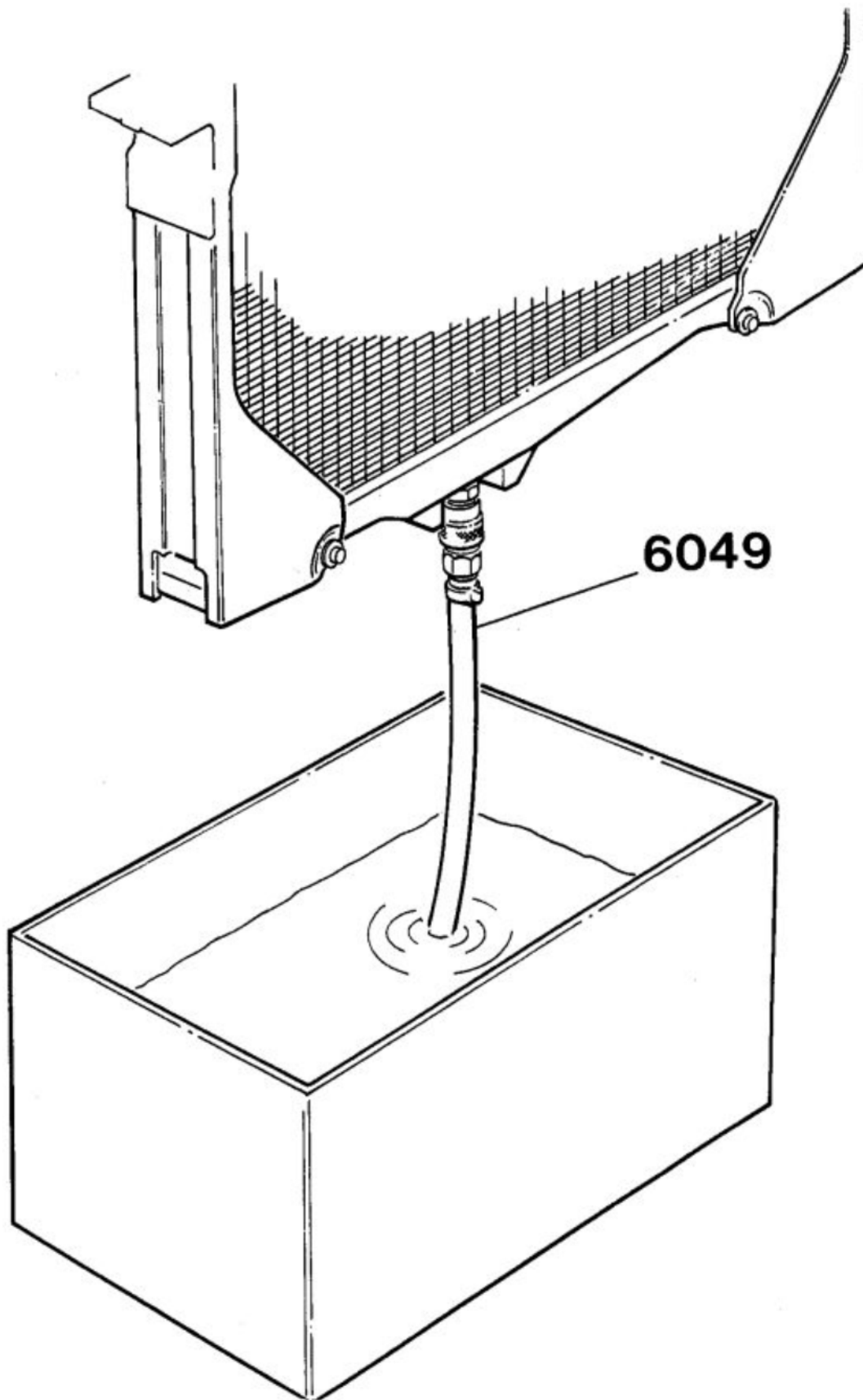
---

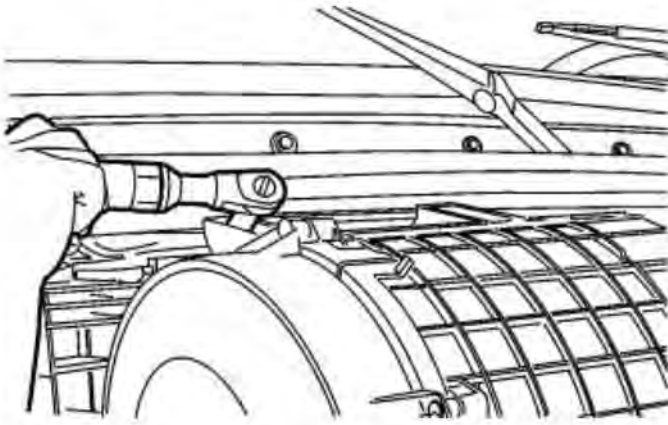
Special tools: 9996049

Other special equipment: 3092726

### Removing

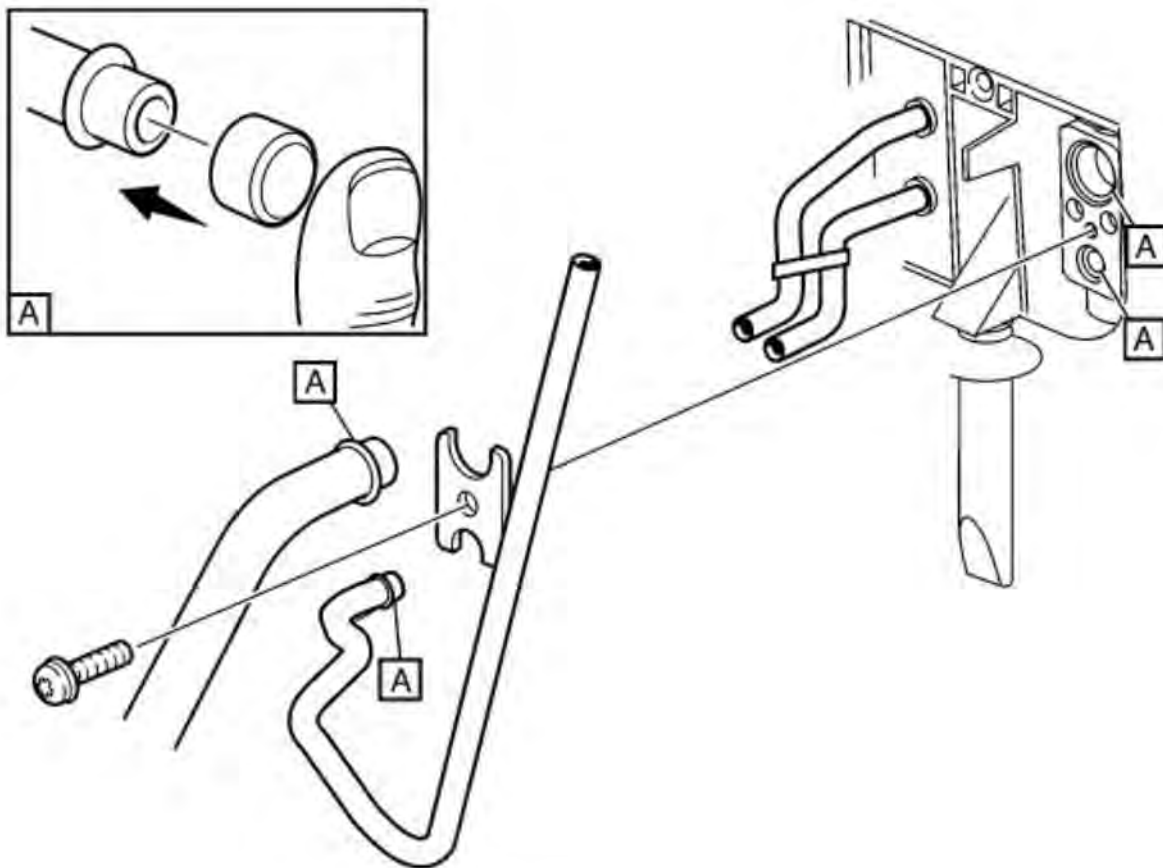
1





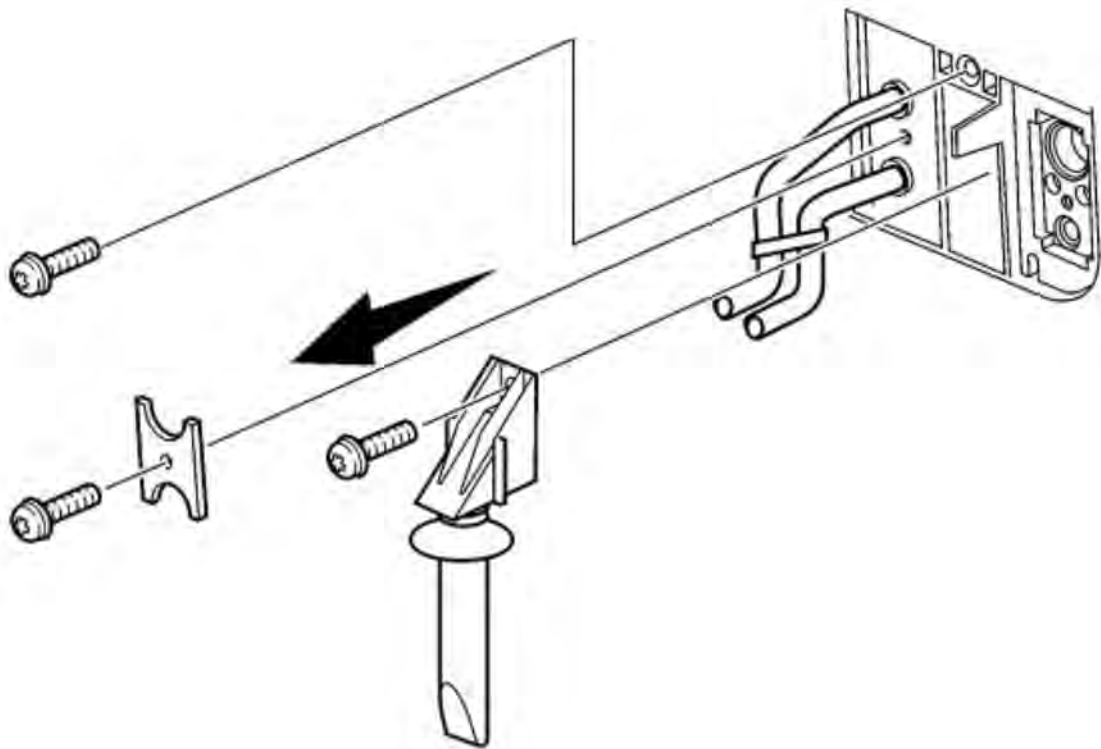
Remove air filter.

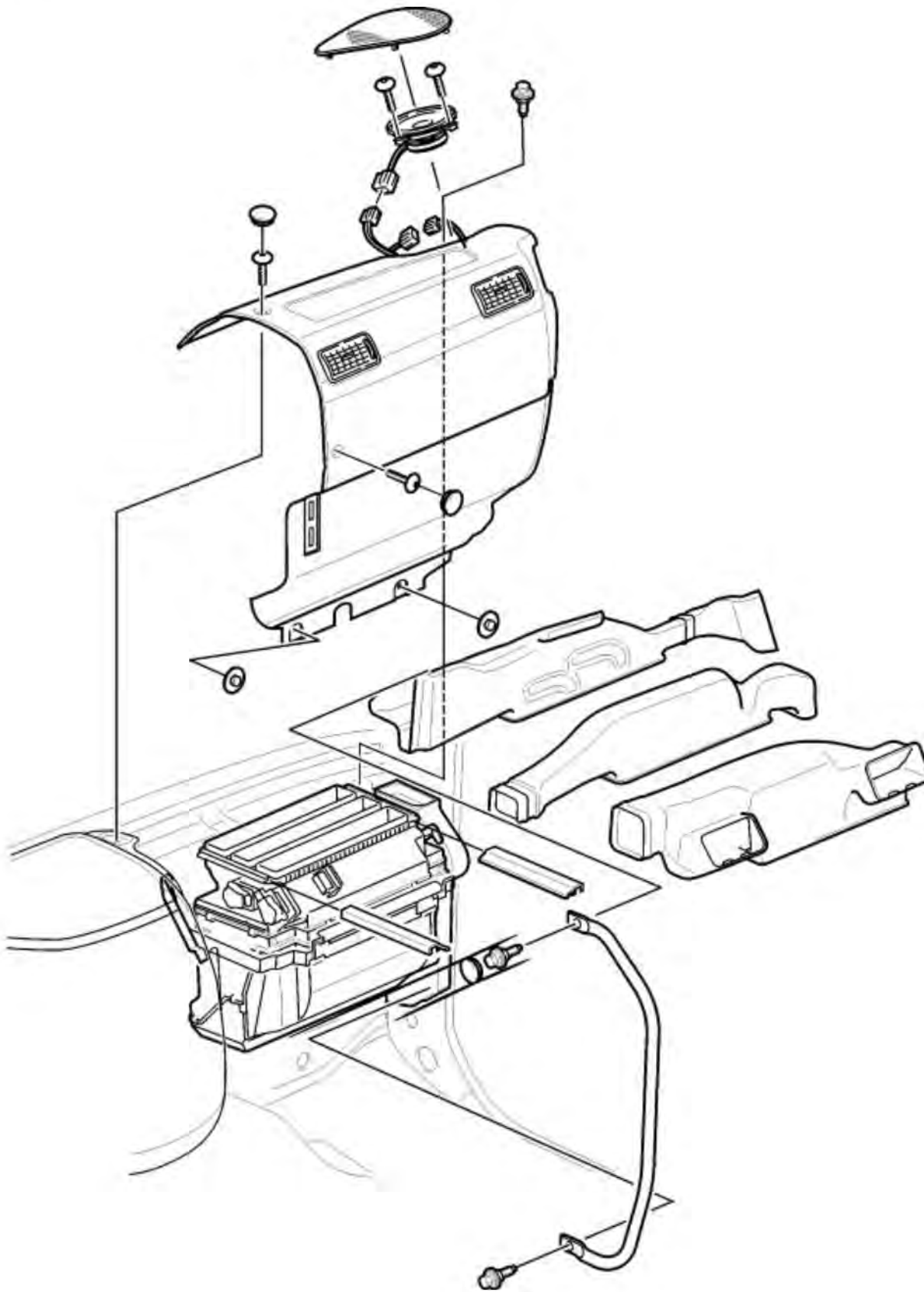
3



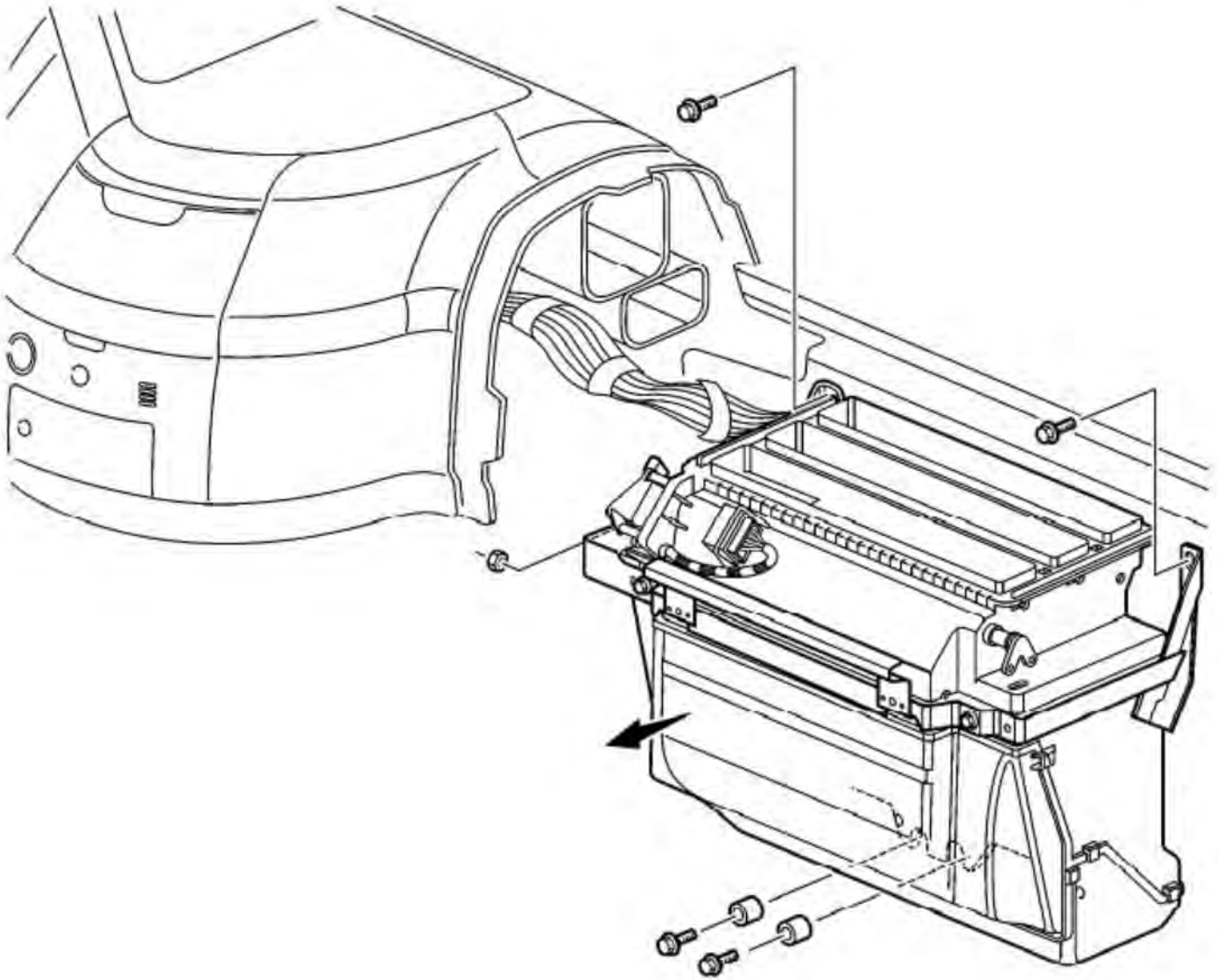
A: Plug the connections.

4



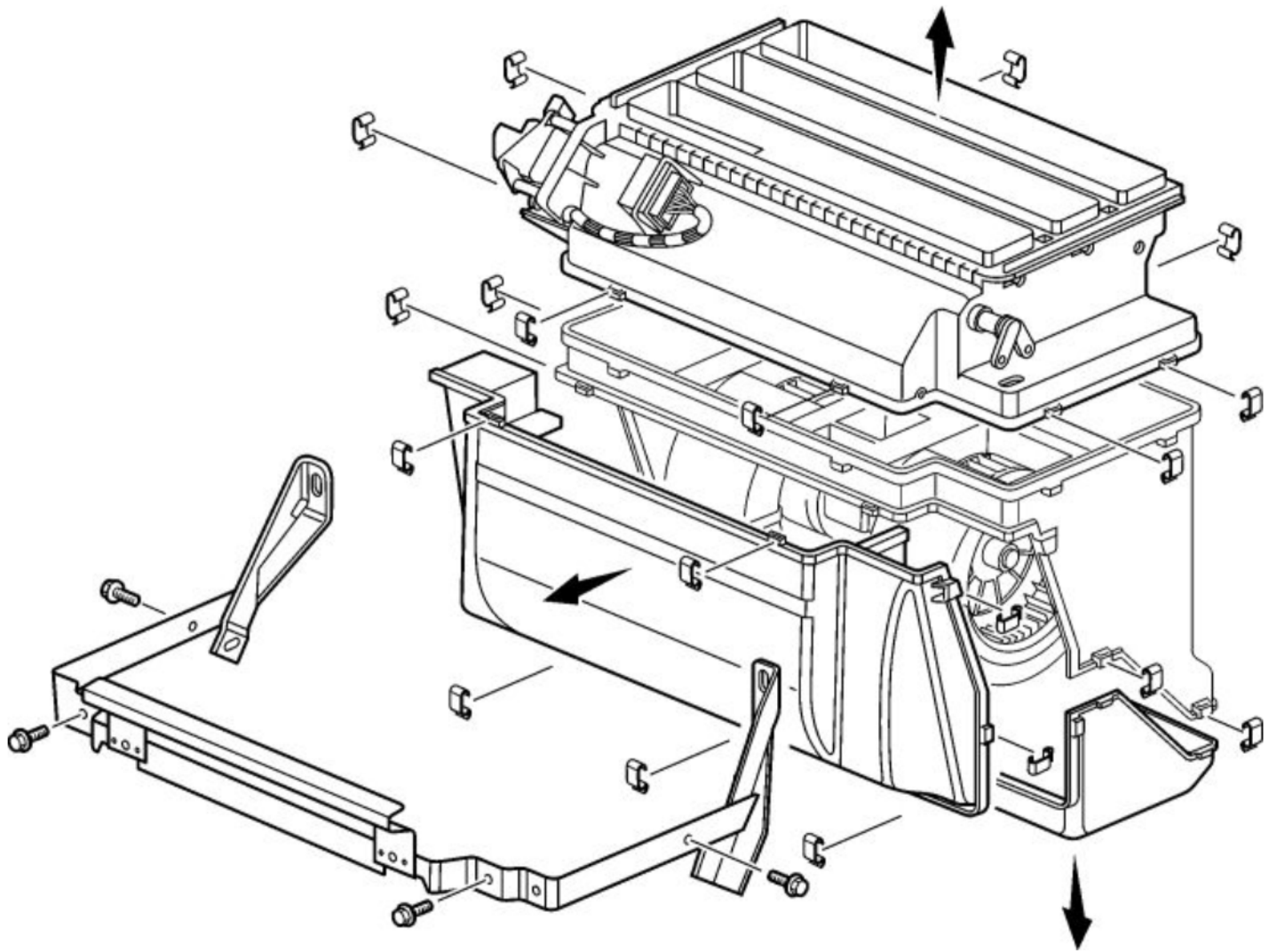


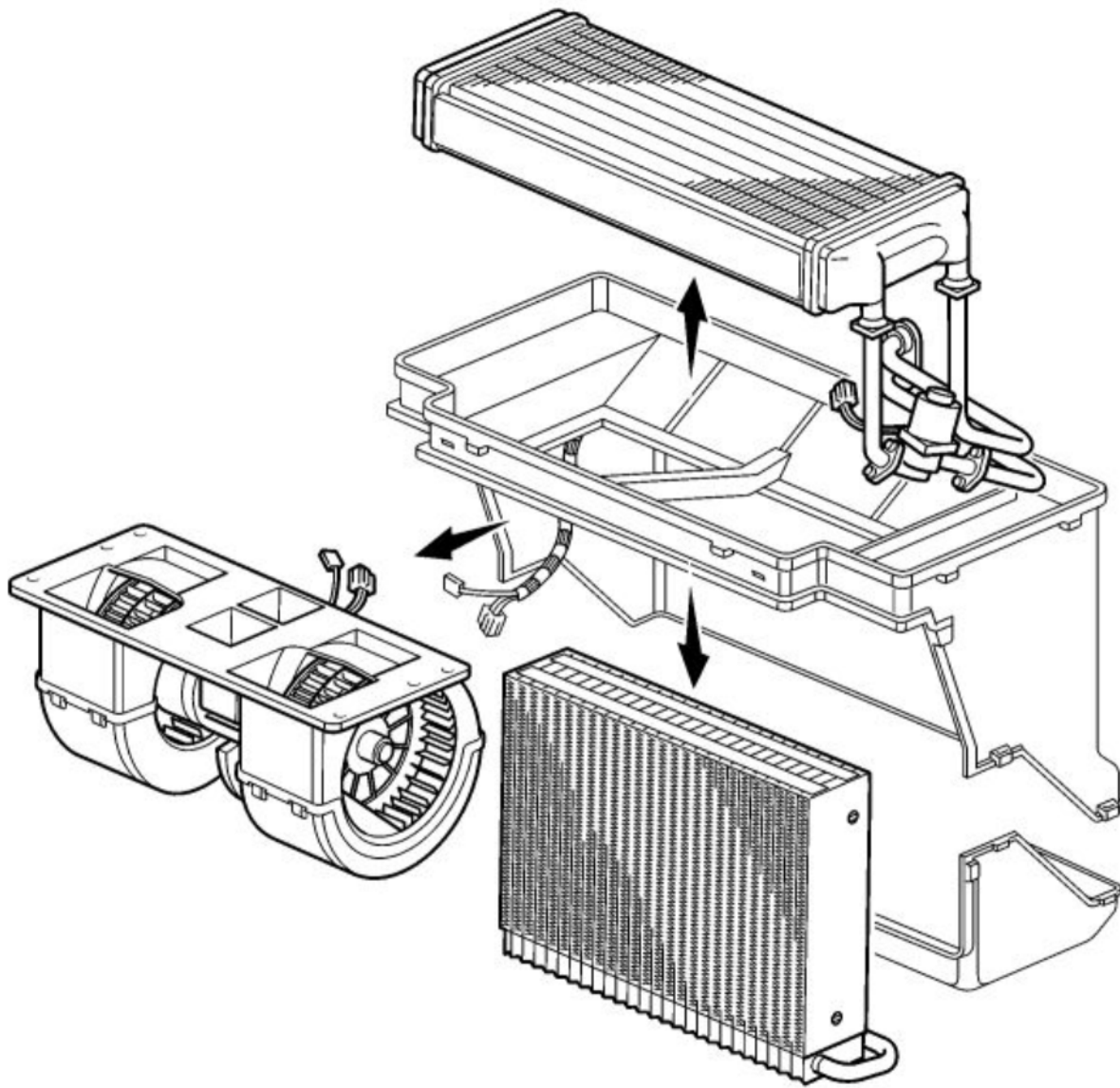


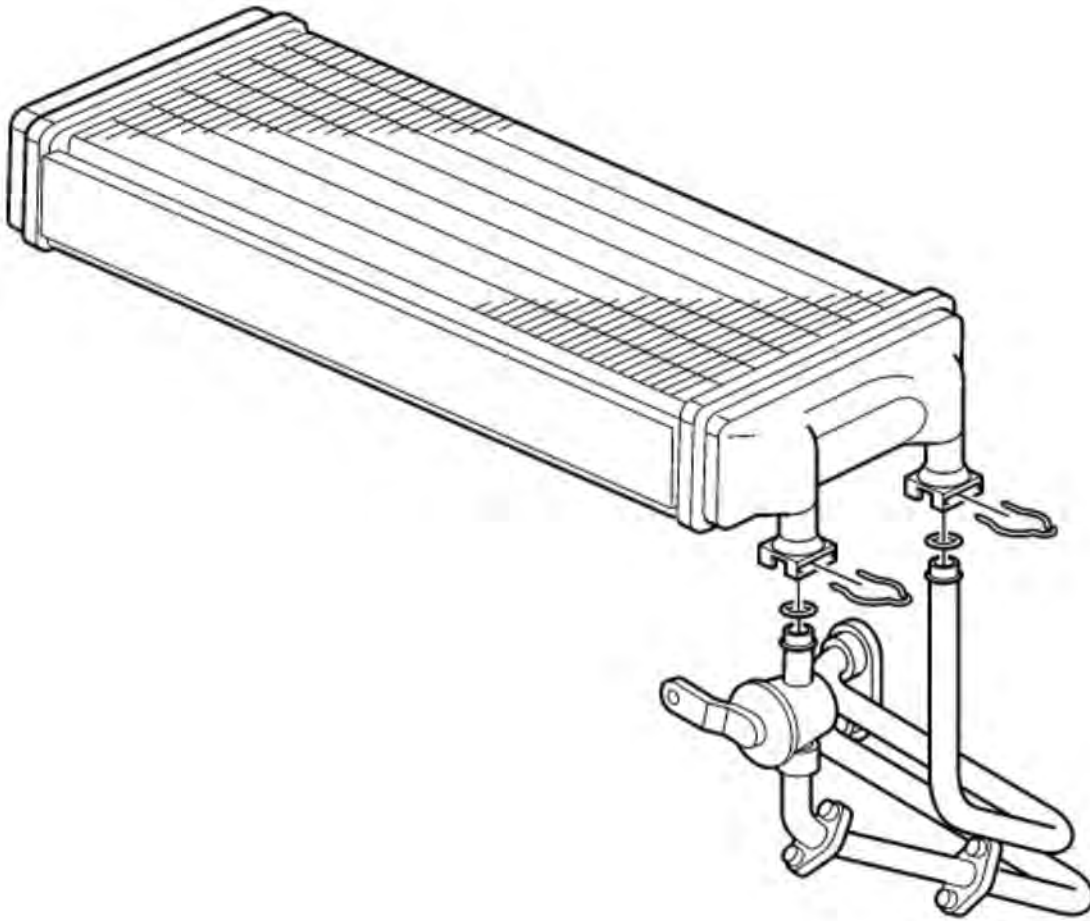


Pull the climate unit backwards and carefully cut off the butyl tape holding the unit in the casing wall.

7

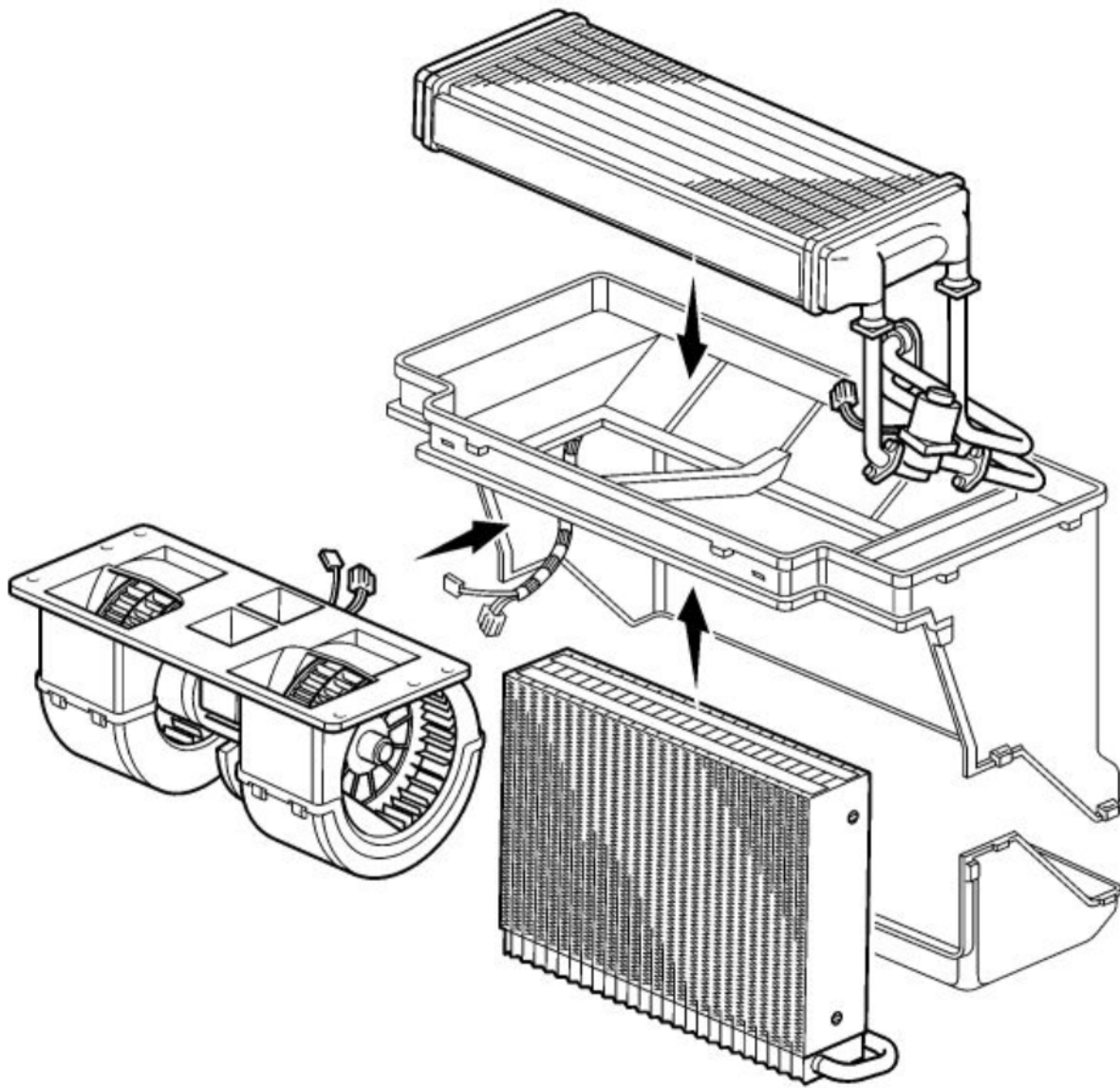


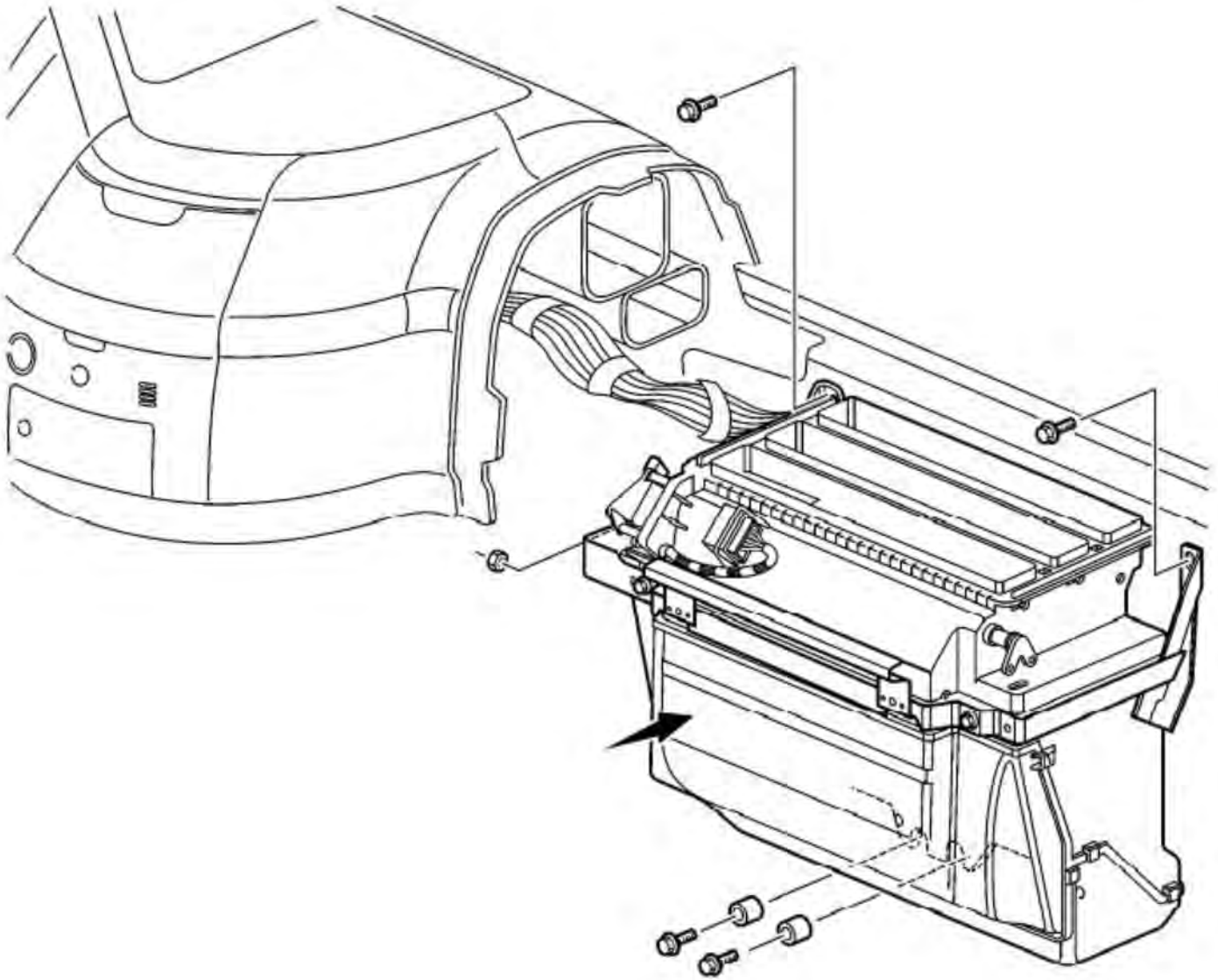




## Installation

10

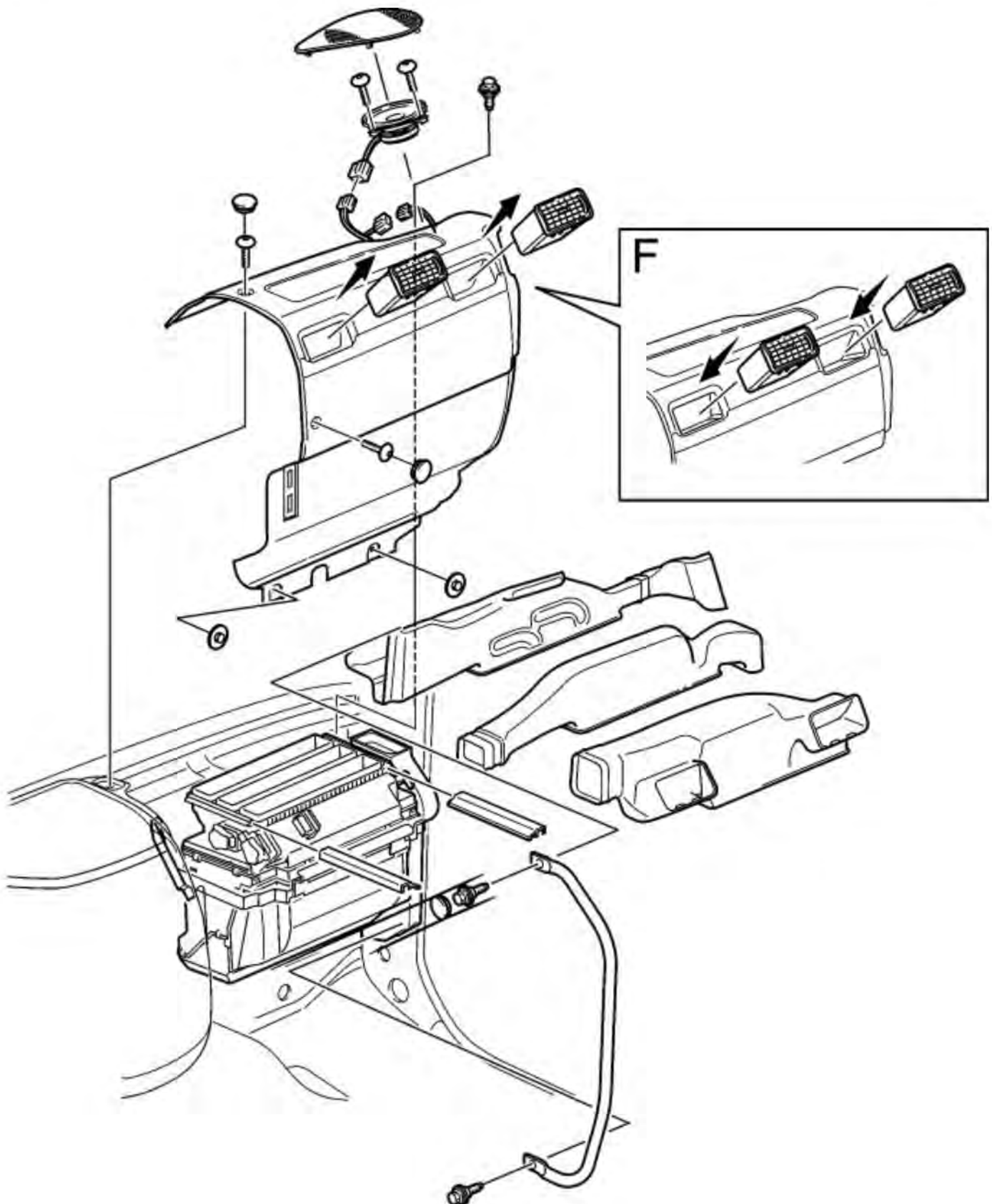




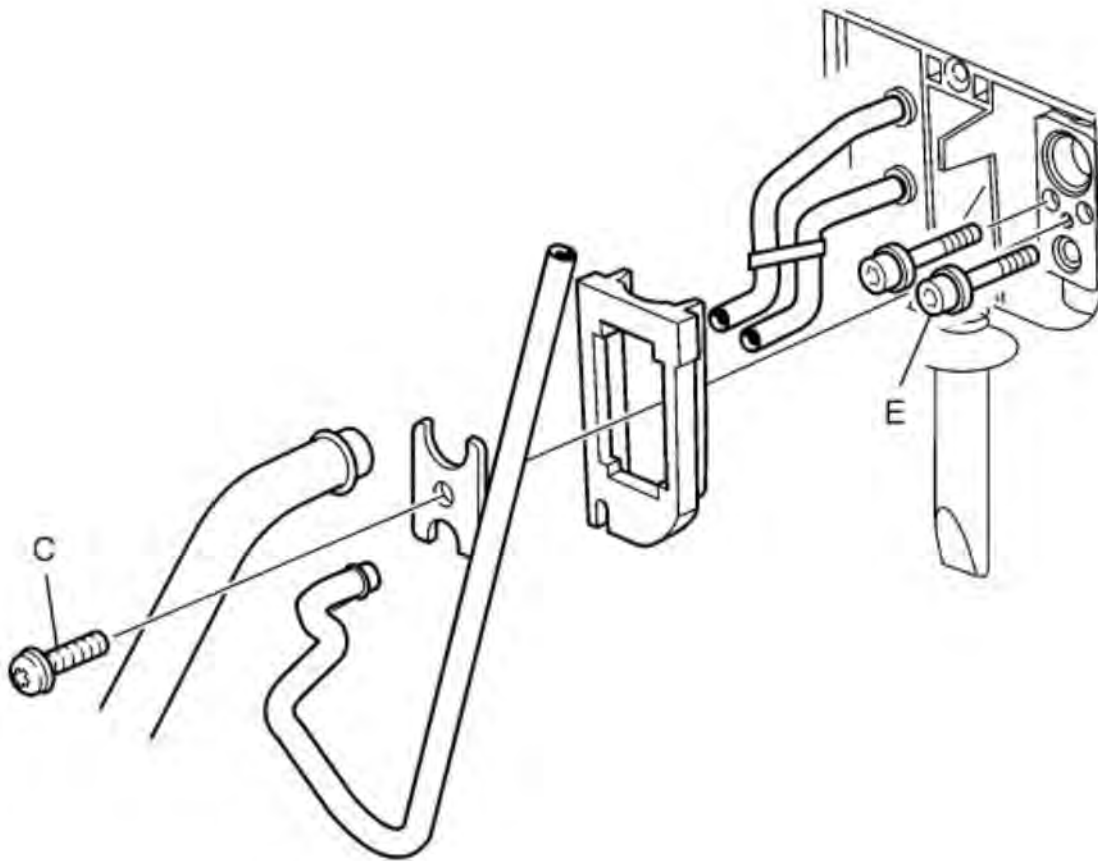
Note: Scrape off and replace the old butyl tape to ensure a good seal.

The two lower bolts with spacer sleeves should be tightened a few turns before positioning the climate control system.

12



F: The ventilation nozzles must be removed before reinstalling the cover.

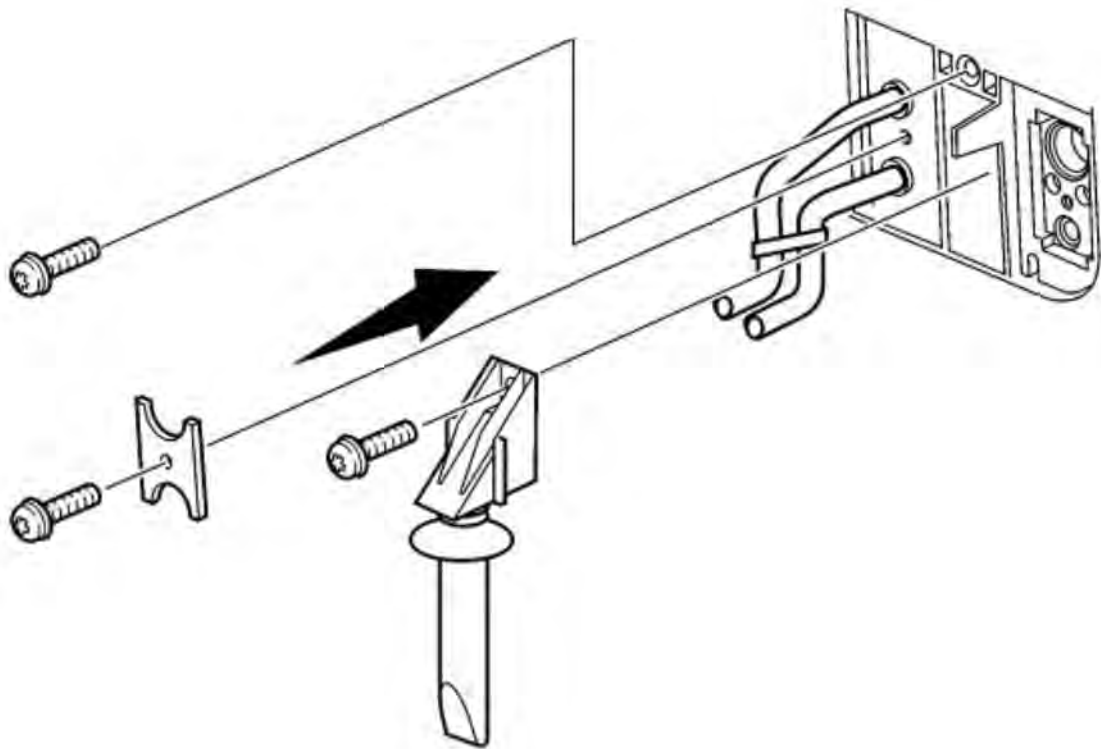


Specifications:

C:  $6 \pm 1$  Nm E:  $10 \pm 1.5$  Nm

14

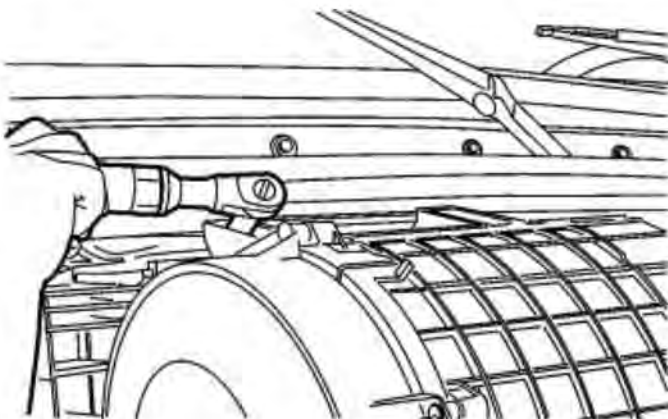




Specifications:

B:  $10 \pm 1.5$  Nm

15



Install air filter,

16

