

FURNITURE

Purpose

This document outlines the procedure for removing wrinkles from furniture fabric with a steamer.

Safety**⚠ CAUTION**

The "CAUTION" symbol above is a sign that a procedure has a safety risk involved and may cause personal injury, product and/or property damage if not performed safely and within the parameters set forth in this document.

⚠ CAUTION

Use appropriate personal protective equipment (PPE) for the procedure being performed.

⚠ CAUTION

Steam and/or steam nozzle are extremely hot. Keep clear and use caution.

Resources Required

- Steam machine
- Water
- PPE

Procedure

1. Steam the furniture by running the steam nozzle (Fig. 1A) in downward strokes (Fig. 2A) along the fabric (Fig. 2B).

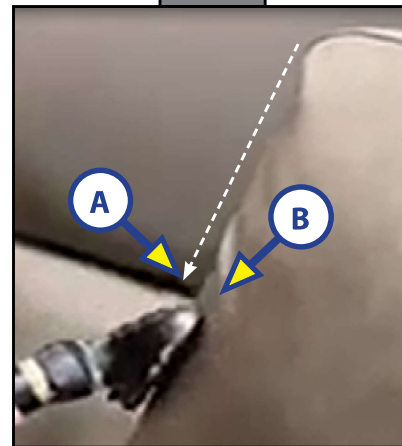
NOTE: It is unnecessary to press hard with the steam nozzle or push the fabric against anything, the steam will gently remove the wrinkles on its own.

2. As the steam nozzle travels in slow downward strokes, press the steam button periodically to apply steam to the fabric.
3. Allow for some drying time to pass before using the furniture.

Fig. 1



Fig. 2



As a supplier of components to the RV industry, safety, education and customer satisfaction are our primary concerns. Should you have any questions, please do not hesitate to contact us at (574) 537-8900 or by email at customerservice@lci1.com. Self-help tips, technical documents, product videos and a training class schedule are available at lippert.com or by downloading the MyLCI app.