



October 28, 2021

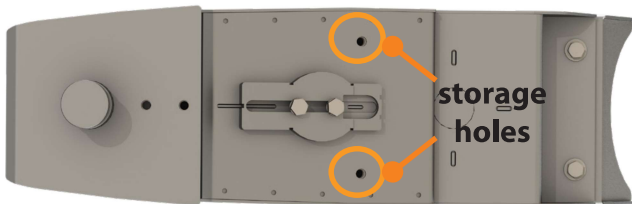
Product Improvement Notice - Turning Point Pin Box redesign

Dear Valued Customer:

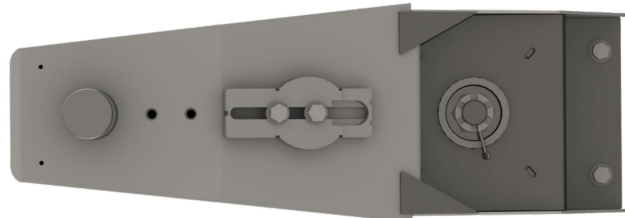
Please be advised Lippert has redesigned the Turning Point Pin Box. The new, improved design is Curt branded and available in 16K only.

The current pin box, which was also available in 10K, is PN 657275. The new pin box is PN 2020131232. Along with the new branding, the pivot shaft on the new design has been reoriented to improve serviceability. Two lockout bolt storage holes on the underside of the pin box have also been removed. The lockout bolts on the new design can be stored in the wedge bolt holes after the wedge is moved.

As the pin boxes come installed on the chassis from Lippert, there is no change in installation for the OEM customer. There is also no top-level part number change for the chassis with the new pinbox.



Current - 657275



New - 2020131232

If you have any questions, please feel free to call me directly or your LCI representative. We value and appreciate your business and partnership.

Sincerely,

Mason Ogle

VP of RV Sales

Lippert Components, Inc.

c: 574.849.1742

mogle@lci1.com

Frequently Asked Questions:

- 1. Will a new part number be required?** Yes, the current pin box is PN 657275. The new pin box is PN 2020131232. However the top-level part number for chassis/pinbox will not change.
- 2. Does the price change for the item?** No, there is no price change.
- 3. Is the new part wholly interchangeable with the previous version of the part?** The pin boxes are interchangeable, however the current pin box will be obsolete.
- 4. Does the customer need to replace inventory?** No, the change is being made on a running basis starting 10/18/2021.