



Subject: MAZDA CONNECT SYMPTOM TROUBLESHOOTING [6TH GENERATION VEHICLES]	Service Alert No.: SA-019/21
	Last Issued : 11/16/2021

BULLETIN NOTES

This service alert supersedes the previously issued service alert listed below. The changes are noted in Red text.

Previous Service Alert:	Date(s) Issued:
SA-019/21	09/28/21, 09/01/21, 06/25/21, 04/08/21 and 02/26/21
SA-026/20	06/11/20 and 02/11/20
SA-065/17	08/10/17

APPLICABLE MODEL(S)/VINS

2014-2018 Mazda3	2016-2021 CX-3	2016-2020 CX-9
2016-2021 Mazda6	2016-2020 CX-5	2016-2021 MX-5

DESCRIPTION

Use the symptom troubleshooting tables below to diagnose MAZDA CONNECT concerns.

REPAIR PROCEDURE

Before proceeding:

- Confirm that the Connectivity Master Unit (CMU) is updated to the latest software version. Go to MGSS -> Infotainment -> [MAZDA CONNECT Updates](#)
- Go to TSB [16-001/20](#) to view MAZDA CONNECT CMU software fix list.
- Confirm that the customers device is compatible. Go to connect.mazda.com -> Support -> [Compatibility](#).
- Confirm that the customers device is updated to the latest software version.
- Apple Carplay/Android Auto FAQ, go to [SA-070/20](#).
- If you suspect a counterfeit Navi SD card, ask the customer for proof of purchase. It cannot be determined by visually looking at the label. If Mazda Toolbox is used and a counterfeit SD card is detected, the customer VIN may be locked-out.

CONSUMER NOTICE: The information and instructions in this bulletin are intended for use by skilled technicians. Mazda technicians utilize the proper tools/ equipment and take training to correctly and safely maintain Mazda vehicles. These instructions should not be performed by "do-it-yourselfers." Customers should not assume this bulletin applies to their vehicle or that their vehicle will develop the described concern. To determine if the information applies, customers should contact their nearest authorized Mazda dealership. Mazda North American Operations reserves the right to alter the specifications and contents of this bulletin without obligation or advance notice. All rights reserved. No part of this bulletin may be reproduced in any form or by any means, electronic or mechanical---including photocopying and recording and the use of any kind of information storage and retrieval system ---without permission in writing.

NOTE:

- If possible, complete any one of the Microsoft Forms Questionnaires. Go to MGSS -> Infotainment -> [MAZDA CONNECT](#) Questionnaire.
- Some customers may complain that on some roads, the speed limit shown in the navigation screen is different from the actual road signs.
 - Every time MAZDA CONNECT starts (boots up when ignition turns ON), the disclaimer notification is shown to notify that there are some difference between the navigation map data and actual road signs.
 - Lead time for updating the navigation map data takes 12 months.

Index:

- No. 1 Blank Screen
- No. 2. Rear View Camera is not displayed
- No. 3 Rebooting
- No. 4 Infotainment System Has No Sound
- No. 5 Commander Switch Does Not Work
- No. 6 Bluetooth device will not pair
- No. 7 Incorrect GPS position
- No. 8 Voice Recognition Does Not Work
- No. 9 Cannot Make a Hands-Free Call
- No. 10 Cannot Play Bluetooth Audio
- No. 11 Other Symptoms
- No. 12 How to update the Navigation SD Card Map
- No. 13 How to Check Navi SD Card VIN Lock

CONSUMER NOTICE: The information and instructions in this bulletin are intended for use by skilled technicians. Mazda technicians utilize the proper tools/ equipment and take training to correctly and safely maintain Mazda vehicles. These instructions should not be performed by "do-it-yourselfers." Customers should not assume this bulletin applies to their vehicle or that their vehicle will develop the described concern. To determine if the information applies, customers should contact their nearest authorized Mazda dealership. Mazda North American Operations reserves the right to alter the specifications and contents of this bulletin without obligation or advance notice. All rights reserved. No part of this bulletin may be reproduced in any form or by any means, electronic or mechanical---including photocopying and recording and the use of any kind of information storage and retrieval system ---without permission in writing.

No. 1 Blank Screen

Step	Inspection	Result	Action
1	Is the Rear View Camera displayed?	Yes	Go to step 2.
		No	Refer to No. 2. Rear View Camera is not displayed 2016-2017 CX-9 - See 09-034/17
2	Press the "HOME" button. Is the HOME screen displayed correctly?	Yes	Normal Operation
		No	Go to step 3
3	Using M-MDS, are any infotainment system DTC's stored?	Yes	Go to MGSS for DTC diagnosis.
		No	Go to step 4.
4	Is there a device connected to the USB port?	Yes	Go to step 5.
		No	Go to step 6.
5	Disconnect the USB device. Does the display function properly after USB device is disconnected?	Yes	USB device is not compatible.
		No	Go to step 6.
6	Is the connector for the Center Display inserted correctly?	Yes	Go to step 7.
		No	Insert the connector correctly.
7	Are the connectors for the CMU inserted correctly?	Yes	Go to step 8.
		No	Insert the connectors correctly.
8	Is the center display voltage at 0920-304A terminal 1H, L wire color normal?	Yes	Go to step 9.
		No	Go to step 10.
9	Swap the Center Display with good known vehicle. Is the screen display normal?	Yes	Check / Replace the Center Display.
		No	Go to step 10.
10	Swap the CMU with good known vehicle. Is the screen display normal?	Yes	Check / Replace the CMU. <ul style="list-style-type: none"> • Retrieve the data log if possible before replacing the CMU • Document date and time of the condition
		No	Repair / Replace wiring harness. Go to MGSS View Content -> Wiring Diagram -> Body and Accessories -> Entertainment System.

CONSUMER NOTICE: The information and instructions in this bulletin are intended for use by skilled technicians. Mazda technicians utilize the proper tools/ equipment and take training to correctly and safely maintain Mazda vehicles. These instructions should not be performed by "do-it-yourselfers." Customers should not assume this bulletin applies to their vehicle or that their vehicle will develop the described concern. To determine if the information applies, customers should contact their nearest authorized Mazda dealership. Mazda North American Operations reserves the right to alter the specifications and contents of this bulletin without obligation or advance notice. All rights reserved. No part of this bulletin may be reproduced in any form or by any means, electronic or mechanical--including photocopying and recording and the use of any kind of information storage and retrieval system ---without permission in writing.

No. 2 Rear View Camera is not displayed

Step	Inspection	Result	Action
1	Using M-MDS, are any infotainment system DTC's stored?	Yes	Go to MGSS for DTC diagnosis
		No	Go to step 2.
2	Is the vehicle equipped with 360 View Monitor?	Yes	Go to step 3.
		No	Go to step 4.
3	Is the Front Camera and Side Cameras displayed normally?	Yes	Check / Replace the 360 View Monitor control unit.
		No	Go to step 4.
4	Are images other than the Rear View Camera displayed?	Yes	Go to step 5. 2014-2018 Mazda3 5-door HB 2016-2019 CX-3 Go to 09-031/20
		No	Go to No. 1 Blank Screen.
5	Is the connector for the Rear View Camera Inserted correctly?	Yes	Go to step 6.
		No	Insert the connector correctly.
6	Is the connector for the Center Display Inserted correctly	Yes	Go to step 7.
		No	Insert the connector correctly
7	Are the connectors for the CMU Inserted correctly	Yes	Go to step 8.
		No	Insert the connectors correctly
8	Swap the Rear View Camera with good known vehicle. Is the screen display normal?	Yes	Check / Replace the Rear View Camera
		No	Go to Step 9
9	Swap the CMU with good known vehicle. Is the screen display normal?	Yes	Check / Replace the CMU. <ul style="list-style-type: none"> • Retrieve the data log if possible before replacing the CMU • Document date and time of the condition
		No	Go to MGSS, WSM, REAR MOUNT CAMERA IMAGE NOT CLEAR/NO IMAGE ON SCREEN.

CONSUMER NOTICE: The information and instructions in this bulletin are intended for use by skilled technicians. Mazda technicians utilize the proper tools/ equipment and take training to correctly and safely maintain Mazda vehicles. These instructions should not be performed by "do-it-yourselfers." Customers should not assume this bulletin applies to their vehicle or that their vehicle will develop the described concern. To determine if the information applies, customers should contact their nearest authorized Mazda dealership. Mazda North American Operations reserves the right to alter the specifications and contents of this bulletin without obligation or advance notice. All rights reserved. No part of this bulletin may be reproduced in any form or by any means, electronic or mechanical--including photocopying and recording and the use of any kind of information storage and retrieval system ---without permission in writing.

No. 3 Rebooting

Step	Inspection	Result	Action
1	Using M-MDS, are any infotainment system DTC's stored?	Yes	Go to MGSS for DTC diagnosis
		No	Go to step 2.
2	Does the reboot continue after removing the Navigation SD card?	Yes	Go to step 3.
		No	Check / Replace the Navigation SD card. Note: See TSB 09-015/20 if applicable
3	Is there a device connected to the USB port?	Yes	Go to step 4.
		No	Go to step 5.
4	Disconnect the USB device. Does the reboot stop after USB device is disconnected?	Yes	USB device is not compatible
		No	Go to step5.
5	Does the reboot continue after ignition key OFF then back ON?	Yes	Go to step 6.
		No	Check / Replace the CMU. <ul style="list-style-type: none"> Retrieve the data log if possible before replacing the CMU Document date and time of the condition
6	Does the reboot continue after vehicle battery disconnect?	Yes	Check / Replace the CMU. <ul style="list-style-type: none"> Retrieve the data log if possible before replacing the CMU Document date and time of the condition
		No	No repair needed.

CONSUMER NOTICE: The information and instructions in this bulletin are intended for use by skilled technicians. Mazda technicians utilize the proper tools/ equipment and take training to correctly and safely maintain Mazda vehicles. These instructions should not be performed by "do-it-yourselfers." Customers should not assume this bulletin applies to their vehicle or that their vehicle will develop the described concern. To determine if the information applies, customers should contact their nearest authorized Mazda dealership. Mazda North American Operations reserves the right to alter the specifications and contents of this bulletin without obligation or advance notice. All rights reserved. No part of this bulletin may be reproduced in any form or by any means, electronic or mechanical--including photocopying and recording and the use of any kind of information storage and retrieval system ---without permission in writing.

No. 4 Infotainment System Has No Sound

Step	Inspection	Result	Action
1	Using M-MDS, are any infotainment system DTC's stored?	Yes	Go to MGSS for DTC diagnosis
		No	Go to step 2.
2	Is sound normal other than navigation guidance?	Yes	Go to step 3.
		No	Go to step 4.
3	Can you hear the voice after raising the navigation volume?	Yes	Normal Operation.
		No	Go to step 5.
4	Can you hear sound after turning on audio mode?	Yes	Normal Operation.
		No	Go to step 6.
5	Replace the Navigation SD Card. Can you hear voice after Navigation SD Card replacement?	Yes	Complete
		No	Check / Replace the CMU. <ul style="list-style-type: none"> Retrieve the data log if possible before replacing the CMU Document date and time of the condition
6	Can you hear sound after raising the volume of audio?	Yes	Normal Operation
		No	Go to step 7.
7	<< Source: USB/iPod >> Are there any problems with the media and the music files? << Source: Radio >> Are there any problems with the antenna and the reception? << Source: Bluetooth Audio >> Are there any problems with Bluetooth?	Yes	<< Source: USB/iPod >> Check the media and the compatible files. << Source: Radio >> Check the antenna, the reception, and the Tuner and Amp Unit (TAU) side. << Source: Bluetooth Audio >> Check the Bluetooth connection and the Bluetooth device.
		No	Go to step 8.
8.	Go to MGSS " DIAGNOSTIC ASSIST FUNCTION [CONNECTIVITY MASTER UNIT (US)] " Perform Diagnostic Assist Code "94" Speaker Inspection. Did the Speaker Inspection Pass?	Pass	Check / Replace the CMU. Retrieve <ul style="list-style-type: none"> Retrieve the data log if possible before replacing the CMU Document date and time of the condition
		Fail	Go to MGSS NO SOUND OUTPUT IN ALL MODES [ENTERTAINMENT SYSTEM [WITH CENTER DISPLAY]]

CONSUMER NOTICE: The information and instructions in this bulletin are intended for use by skilled technicians. Mazda technicians utilize the proper tools/ equipment and take training to correctly and safely maintain Mazda vehicles. These instructions should not be performed by "do-it-yourselfers." Customers should not assume this bulletin applies to their vehicle or that their vehicle will develop the described concern. To determine if the information applies, customers should contact their nearest authorized Mazda dealership. Mazda North American Operations reserves the right to alter the specifications and contents of this bulletin without obligation or advance notice. All rights reserved. No part of this bulletin may be reproduced in any form or by any means, electronic or mechanical--including photocopying and recording and the use of any kind of information storage and retrieval system ---without permission in writing.

No. 5 Commander Switch Does Not Work

Step	Inspection	Result	Action
1	Using M-MDS, are any infotainment system DTC's stored?	Yes	Go to MGSS for DTC diagnosis
		No	Go to step 2.
2	Does the Commander Switch work correctly?	Yes	Go to step 3.
		No	Go to step 4.
3	Does the Steering Wheel Switch work correctly?	Yes	Normal Operation.
		No	Go to step 5.
4	Are fuses blown/ missing?	Yes	<ul style="list-style-type: none"> • Blown - Diagnose blown fuse • Missing - Install missing fuse
		No	Go to step 5.
5	Go to MGSS " DIAGNOSTIC ASSIST FUNCTION [CONNECTIVITY MASTER UNIT (US)] " Perform Diagnostic Assist Code "65" Commander Switch and Steering Wheel Switch Inspections. Did the Switch Inspections Pass?	Pass	Go to step 6.
		Fail	Replaced the failed switch. Go to MGSS: <ul style="list-style-type: none"> • Steering Wheel Switch Removal/Installation • Commander Switch Removal/Installation
6	Is the connector for the Commander Switch inserted correctly?	Yes	Go to step 7.
		No	Insert the connector correctly.
7	Are the CMU connectors inserted correctly?	Yes	Go to step 8.
		No	Insert the connectors correctly.
8	Swap the Commander Switch with good known vehicle. Does the Commander Switch work correctly?	Yes	Check / Replace the Commander Switch.
		No	Go to step 9.
9	Swap the CMU from known good vehicle. Does the Commander Switch work correctly?	Yes	Check / Replace the CMU. <ul style="list-style-type: none"> • Retrieve the data log if possible before replacing the CMU • Document date and time of the condition
		No	Repair/Replace wiring harness. Go to MGSS View Content -> Wiring Diagram -> Body and Accessories -> Entertainment System.

CONSUMER NOTICE: The information and instructions in this bulletin are intended for use by skilled technicians. Mazda technicians utilize the proper tools/ equipment and take training to correctly and safely maintain Mazda vehicles. These instructions should not be performed by "do-it-yourselfers." Customers should not assume this bulletin applies to their vehicle or that their vehicle will develop the described concern. To determine if the information applies, customers should contact their nearest authorized Mazda dealership. Mazda North American Operations reserves the right to alter the specifications and contents of this bulletin without obligation or advance notice. All rights reserved. No part of this bulletin may be reproduced in any form or by any means, electronic or mechanical--including photocopying and recording and the use of any kind of information storage and retrieval system ---without permission in writing.

No. 6 Bluetooth device will not pair

Step	Inspection	Result	Action
1	Using M-MDS, are any infotainment system DTC's stored?	Yes	Go to MGSS for DTC diagnosis
		No	Go to step 2.
2	Is Bluetooth enabled on the customers device?	Yes	Go to step 3.
		No	Enable Bluetooth on the customers device.
3	Is the customers device paired to the vehicle?	Yes	Go to step 4.
		No	Pair the customers device to the vehicle. See MGSS Bluetooth® PAIRING NOT POSSIBLE [ENTERTAINMENT SYSTEM [WITH CENTER DISPLAY]]
4	Is the customers device selected in MAZDA CONNECT settings?	Yes	Go to step 5.
		No	Select the customers device from Bluetooth settings.
5	Delete the device from MAZDA CONNECT and then re-pair it. Does Bluetooth work correctly?	Yes	Normal Operation
		No	Go to step 6.
6	Go to http://infotainment.mazdahandsfree.com Web Site. Is the customers device compatible?	Yes	Go to step 7.
		No	The customers device is not compatible.
7	Does the same symptom occur on another same model/year vehicle?	Yes	Go to step 8.
		No	Check / Replace the CMU. <ul style="list-style-type: none"> Document device model, software version and occurrence of the condition. Retrieve the data log if possible before replacing the CMU Document date and time of the condition
8	Reboot the customers device. Does Bluetooth work correctly?	Yes	Vehicle operation is normal.
		No	Check / Replace the CMU. <ul style="list-style-type: none"> Document device model, software version and occurrence of the condition. Retrieve the data log if possible before replacing the CMU Document date and time of the condition

CONSUMER NOTICE: The information and instructions in this bulletin are intended for use by skilled technicians. Mazda technicians utilize the proper tools/ equipment and take training to correctly and safely maintain Mazda vehicles. These instructions should not be performed by "do-it-yourselfers." Customers should not assume this bulletin applies to their vehicle or that their vehicle will develop the described concern. To determine if the information applies, customers should contact their nearest authorized Mazda dealership. Mazda North American Operations reserves the right to alter the specifications and contents of this bulletin without obligation or advance notice. All rights reserved. No part of this bulletin may be reproduced in any form or by any means, electronic or mechanical--including photocopying and recording and the use of any kind of information storage and retrieval system ---without permission in writing.

No. 7 Incorrect GPS position

Step	Inspection	Result	Action
1	Go to MGSS " DIAGNOSTIC ASSIST FUNCTION [CONNECTIVITY MASTER UNIT (US)] " Perform Diagnostic Assist Code "72" GPS information verification. Check GPS Received Level. Does the Navi system show correct vehicle position?	Yes	Normal Operation.
		No	Go to step 2.
2	Using M-MDS, are any of the following DTC's stored? - B119F:1D, GPS antenna circuit malfunction - B119F:11, GPS antenna circuit malfunction - B119F:13, GPS antenna circuit malfunction - B119F:92, GPS antenna circuit malfunction	Yes	Go to step 4.
		No	Go to step 3.
3.	Is the wheel and tire size correct according to the tire label?	Yes	Go to step 8.
		No	Swap wheels/tires with correct size. If issue is fixed, inform the customer.
4	Is the GPS antenna connector secured properly?	Yes	Go to step 5.
		No	Insert the connector correctly.
5	Is the GPS wiring harness open or shorted?	Yes	Repair / Replace GPS wiring harness.
		No	Go to step 6.
6	Are the CMU connectors secured properly?	Yes	Go to step 7.
		No	Insert the connectors correctly.
7	Is the CMU wiring harness open or shorted?	Yes	Repair / Replace CMU wiring harness.
		No	Go to step 8.
8	Replace GPS antenna. Does the Navigation system show correct position?	Yes	Repair completed.
		No	Check / Replace the CMU. <ul style="list-style-type: none"> • Retrieve the data log if possible before replacing the CMU • Document date and time of the condition

NOTE: Remove aftermarket GPS devices that may interfere with vehicle GPS antenna.
Example: Some radar detectors may emit radio waves that interfere with the vehicle GPS antenna.

CONSUMER NOTICE: The information and instructions in this bulletin are intended for use by skilled technicians. Mazda technicians utilize the proper tools/ equipment and take training to correctly and safely maintain Mazda vehicles. These instructions should not be performed by "do-it-yourselfers." Customers should not assume this bulletin applies to their vehicle or that their vehicle will develop the described concern. To determine if the information applies, customers should contact their nearest authorized Mazda dealership. Mazda North American Operations reserves the right to alter the specifications and contents of this bulletin without obligation or advance notice. All rights reserved. No part of this bulletin may be reproduced in any form or by any means, electronic or mechanical--including photocopying and recording and the use of any kind of information storage and retrieval system ---without permission in writing.

No. 8 Voice Recognition Does Not Work

Step	Inspection	Result	Action
1	Using M-MDS, are any infotainment system DTC's stored?	Yes	Go to MGSS for DTC diagnosis
		No	Go to step 2.
2	Go to MGSS "DIAGNOSTIC ASSIST FUNCTION [CONNECTIVITY MASTER UNIT (US)]" Perform Diagnostic Assist Code "65" Commander Switch and Steering Wheel Switch Inspections. Did the Steering SW Inspection Pass?	Pass	Go to step 3.
		Fail	Go to MGSS STEERING SWITCH INSPECTION.
3	Go to MGSS "DIAGNOSTIC ASSIST FUNCTION [CONNECTIVITY MASTER UNIT (US)]" Perform Diagnostic Assist Code "61" Microphone signal input condition Did the Microphone Inspection Pass?	Pass	Go to step 4.
		Fail	Go to MGSS MICROPHONE INSPECTION.
4	Go to MGSS VOICE OPERATION NOT POSSIBLE [ENTERTAINMENT SYSTEM [WITH CENTER DISPLAY]] Is the vehicle repaired?	Yes	Repair complete
		No	Check / Replace the CMU. <ul style="list-style-type: none"> Retrieve the data log if possible before replacing the CMU Document date and time of the condition

CONSUMER NOTICE: The information and instructions in this bulletin are intended for use by skilled technicians. Mazda technicians utilize the proper tools/ equipment and take training to correctly and safely maintain Mazda vehicles. These instructions should not be performed by "do-it-yourselfers." Customers should not assume this bulletin applies to their vehicle or that their vehicle will develop the described concern. To determine if the information applies, customers should contact their nearest authorized Mazda dealership. Mazda North American Operations reserves the right to alter the specifications and contents of this bulletin without obligation or advance notice. All rights reserved. No part of this bulletin may be reproduced in any form or by any means, electronic or mechanical--including photocopying and recording and the use of any kind of information storage and retrieval system ---without permission in writing.

No. 9 Cannot Make a Hands-Free Call

Step	Inspection	Result	Action
1	Using M-MDS, are any infotainment system DTC's stored?	Yes	Go to MGSS for DTC diagnosis
		No	Go to step 2.
2	Is Bluetooth enabled on the customers device?	Yes	Go to step 3.
		No	Enable Bluetooth on the customers device.
3	Is the customers device data service strength good?	Yes	Go to step 4.
		No	Move to a location where data service strength is good and retest.
4	Is the customers device paired to the vehicle?	Yes	Go to step 5.
		No	Pair the customers device to the vehicle.
5	Is the customers device selected in MAZDA CONNECT settings?	Yes	Go to step 6.
		No	Select the customers device from Bluetooth settings.
6	Delete the device from MAZDA CONNECT and then re-pair it. Does Bluetooth work correctly?	Yes	Normal Operation
		No	Go to step 7.
7	Go to http://infotainment.mazdahandsfree.com Web Site. Is the customers device compatible?	Yes	Go to step 8.
		No	The customers device is not compatible.
8	Does the same symptom occur on another same model/year vehicle?	Yes	Go to step 9.
		No	Go to step 10.
9	Reboot the customers device. Does Bluetooth work correctly?	Yes	Vehicle operation is normal.
		No	Go to step 10.
10	Is the Bluetooth device in a place where radio waves may be blocked? (Behind or under a sheet, in a box, in a purse/bag, ext.)	Yes	Move the Bluetooth device away from hidden location.
		No	Go to step 11.
11	Is the Bluetooth device contacting or blocked by metal objects?	Yes	Move the Bluetooth device away from metal objects.
		No	Go to step 12.
12	Is a Bluetooth device and a USB device connected at the same time?	Yes	Disconnect other USB device.
		No	Go to step 13.
13	Does the problem occur in a specific geological location only?	Yes	Move to a different location. This may be caused by electrical interference by radio stations, specific small power radio stations, or amateur radio stations for mobile identification used in industrial, scientific and medical devices.
		No	Go to step 14.
14	Does the same symptom occur on another Bluetooth device?	Yes	Go to step 15
		No	The customers device is not compatible.
15	Does the voice recognition system operate	Yes	Check / Replace the CMU.

CONSUMER NOTICE: The information and instructions in this bulletin are intended for use by skilled technicians. Mazda technicians utilize the proper tools/ equipment and take training to correctly and safely maintain Mazda vehicles. These instructions should not be performed by "do-it-yourselfers." Customers should not assume this bulletin applies to their vehicle or that their vehicle will develop the described concern. To determine if the information applies, customers should contact their nearest authorized Mazda dealership. Mazda North American Operations reserves the right to alter the specifications and contents of this bulletin without obligation or advance notice. All rights reserved. No part of this bulletin may be reproduced in any form or by any means, electronic or mechanical--including photocopying and recording and the use of any kind of information storage and retrieval system ---without permission in writing.

using other functions such as Bluetooth Audio?		<ul style="list-style-type: none"> • Document device model, software version and occurrence of the condition. • Retrieve the data log if possible before replacing the CMU • Document date and time of the condition
	No	Go to No. 8 Voice Recognition Does Not Work

No. 10 Cannot Play Bluetooth Audio

Step	Inspection	Result	Action
1	Using M-MDS, are any infotainment system DTC's stored?	Yes	Go to MGSS for DTC diagnosis
		No	Go to step 2.
2	Is Bluetooth enabled on the customers device?	Yes	Go to step 3.
		No	Enable Bluetooth on the customers device.
3	Is the customers device data service strength good?	Yes	Go to step 4.
		No	Move to a location where data service strength is good and retest.
4	Is the customers device battery strength good?	Yes	Go to step 5
		No	Connect the customers device to a charger or recharge the device, then retest.
5	Is the customers device paired to the vehicle?	Yes	Go to step 6.
		No	Pair the customers device to the vehicle.
6	Is the customers device selected in MAZDA CONNECT settings?	Yes	Go to step 7.
		No	Select the customers device from Bluetooth settings.
7	Delete the device from MAZDA CONNECT and then re-pair it. Does Bluetooth work correctly?	Yes	Normal Operation
		No	Go to step 8.
8	Go to http://infotainment.mazdahandsfree.com Web Site. Is the customers device compatible?	Yes	Go to step 9.
		No	The customers device is not compatible.
9	Does the same symptom occur on another same model/year vehicle?	Yes	Go to step 10.
		No	Go to step 11.
10	Reboot the customers device. Does Bluetooth work correctly?	Yes	Vehicle operation is normal.
		No	Go to step 11.
11	Is the Bluetooth device in a place where radio waves may be blocked? (Behind or under a sheet, in a box, in a purse/bag, ext.)	Yes	Move the Bluetooth device away from hidden location.
		No	Go to step 12.
12	Is the Bluetooth device contacting or blocked	Yes	Move the Bluetooth device away from metal

CONSUMER NOTICE: The information and instructions in this bulletin are intended for use by skilled technicians. Mazda technicians utilize the proper tools/ equipment and take training to correctly and safely maintain Mazda vehicles. These instructions should not be performed by "do-it-yourselfers." Customers should not assume this bulletin applies to their vehicle or that their vehicle will develop the described concern. To determine if the information applies, customers should contact their nearest authorized Mazda dealership. Mazda North American Operations reserves the right to alter the specifications and contents of this bulletin without obligation or advance notice. All rights reserved. No part of this bulletin may be reproduced in any form or by any means, electronic or mechanical--including photocopying and recording and the use of any kind of information storage and retrieval system ---without permission in writing.

	by metal objects?		objects.
		No	Go to MGSS NO Bluetooth® AUDIO AND INTERNET RADIO SOUND [ENTERTAINMENT SYSTEM [WITH CENTER DISPLAY]] Go to step 13 if not resolved.
13	Is a Bluetooth device and a USB device connected at the same time?	Yes	Disconnect other USB device.
		No	Check / Replace the CMU. <ul style="list-style-type: none"> • Document device model, software version and occurrence of the condition. • Retrieve the data log if possible before replacing the CMU • Document date and time of the condition

No. 11 Other symptoms

Symptom		Solution
SiriusXM	Error Messages <ul style="list-style-type: none"> • Unable to Connect to SiriusXM Radio • Check SiriusXM Tuner 	Update CMU software version to 74.00.230A or later.
	Can SiriusXM be added if not equipped?	Go to MT-007/15
Bluetooth	iPhone incoming SMS Text Message is not displayed	Go to MT-011/18
	Wrong phone connected	Go to SA-063/17
Center Display	Hot temperature warning message	Go to MT-006/20
	Rear view monitor is blurry	Go to MT-007/18 Go to 09-031/20 if applicable
	Touch screen operates by itself (ghost touch)	2014-2016 Mazda3 (Japan and Mexico built) Go to SSPB6
	Screen cracking (spider cracking)	2014-2016 Mazda3 (Japan and Mexico built) Go to SSPB6
		2016-017 CX-9 Go to SSPB9
	2017-2018 Mazda3 2018-2019 Mazda6 2016-2018 CX-5 Go to SA-008/18	
	2016-2017 CX-3	

CONSUMER NOTICE: The information and instructions in this bulletin are intended for use by skilled technicians. Mazda technicians utilize the proper tools/ equipment and take training to correctly and safely maintain Mazda vehicles. These instructions should not be performed by "do-it-yourselfers." Customers should not assume this bulletin applies to their vehicle or that their vehicle will develop the described concern. To determine if the information applies, customers should contact their nearest authorized Mazda dealership. Mazda North American Operations reserves the right to alter the specifications and contents of this bulletin without obligation or advance notice. All rights reserved. No part of this bulletin may be reproduced in any form or by any means, electronic or mechanical--including photocopying and recording and the use of any kind of information storage and retrieval system ---without permission in writing.

		2017 MX-5 2016 MX-5 vehicles with VINs lower than JM1ND*****119894 (produced before July 4, 2016) Go to 09-018/18
Clock	Clock shows incorrect time	Go to SA-041/20
Navigation	How to update maps	Go to Mazda Toolbox
	Error message "Invalid SD Card"	1. Go to MT-001/18 2. Check VIN Lock
	Navigation is inoperative	1. Go to MT-007/15 2. Go to MGSS MAP IS NOT DISPLAYED [ENTERTAINMENT SYSTEM [WITH CENTER DISPLAY]]
	No Navigation voice guidance	Go to MGSS NO NAVIGATION GUIDANCE VOICE OUTPUT [ENTERTAINMENT SYSTEM [WITH CENTER DISPLAY]]
USB Aux	Smart phone device will not charge	Go to MT-022/15 Go to MT-002/18
	Audio source improper operation when device connected to USB	Go to MT-002/18
	No USB audio sound	Go to MGSS NO USB AUDIO SOUND OUTPUT [ENTERTAINMENT SYSTEM [WITH CENTER DISPLAY]]
	No Aux audio sound	Go to MGSS NO AUX AUDIO SOUND OUTPUT [ENTERTAINMENT SYSTEM [WITH CENTER DISPLAY]]

CONSUMER NOTICE: The information and instructions in this bulletin are intended for use by skilled technicians. Mazda technicians utilize the proper tools/ equipment and take training to correctly and safely maintain Mazda vehicles. These instructions should not be performed by "do-it-yourselfers." Customers should not assume this bulletin applies to their vehicle or that their vehicle will develop the described concern. To determine if the information applies, customers should contact their nearest authorized Mazda dealership. Mazda North American Operations reserves the right to alter the specifications and contents of this bulletin without obligation or advance notice. All rights reserved. No part of this bulletin may be reproduced in any form or by any means, electronic or mechanical--including photocopying and recording and the use of any kind of information storage and retrieval system ---without permission in writing.

No. 12 How to update the Navigation SD Card Map

Go to Mazdausa.com

Select Owners → How to Use → Add vehicle year/model → VEHICLE RESOURCES → NAVIGATION SYSTEM → Map Update Guide

NOTE: The customer will be instructed to download the [Mazda Toolbox App](#).

VEHICLE RESOURCES

OWNER'S MANUALS +

NAVIGATION SYSTEM -

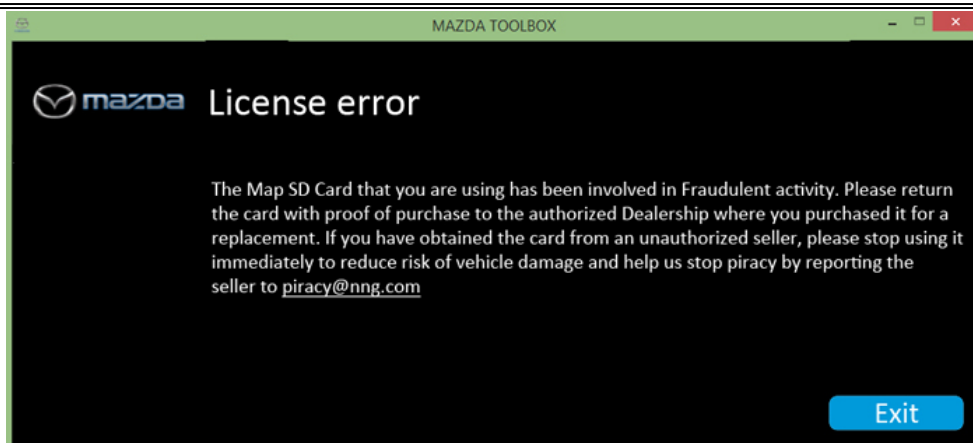
📄 2021 Mazda3 Hatchback
Navigation Owner's Manual

📄 **Map Update Guide**

SIRIUSXM¹ SATELLITE RADIO +

BLUETOOTH GUIDE² +

License Error message in Mazda Toolbox



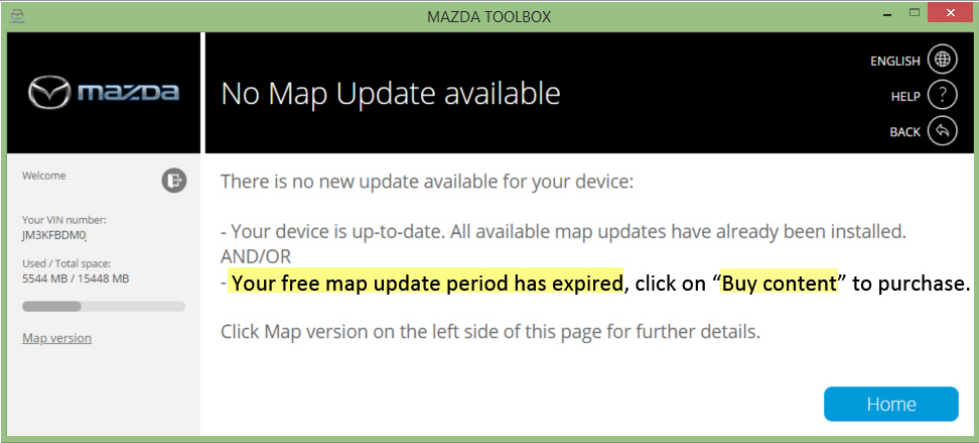
Customer is locked out of map update on Mazda Toolbox due to unauthorized or counterfeit navigation SD card.

How to unlock the customer account in Mazda Toolbox

1. Purchase a Genuine Mazda Navigation SD card.
2. Customer or dealer must contact NNG helpdesk by email at piracy@nng.com and request customer account unlock.

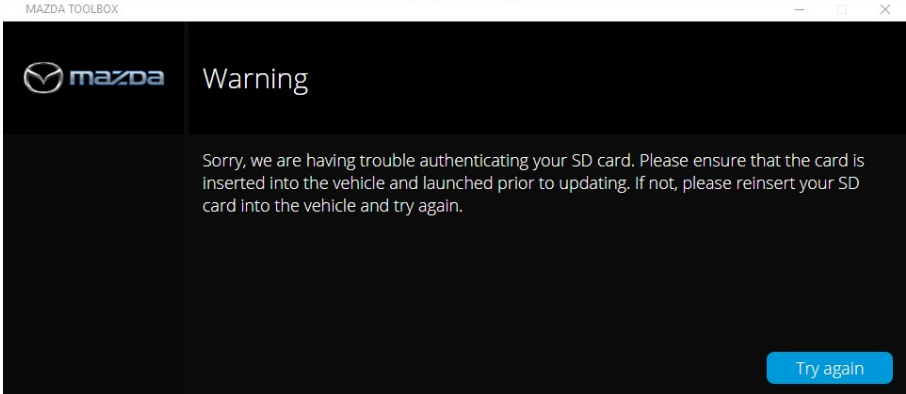
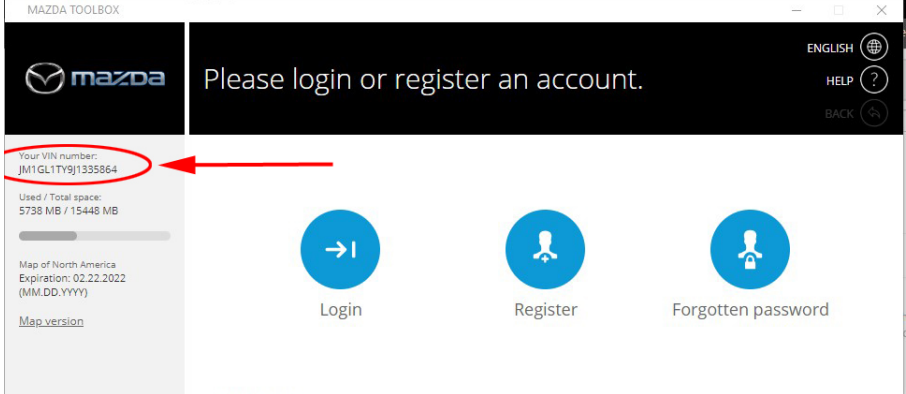
NOTE: NNG may require proof of purchase to unlock the customer account.

CONSUMER NOTICE: The information and instructions in this bulletin are intended for use by skilled technicians. Mazda technicians utilize the proper tools/ equipment and take training to correctly and safely maintain Mazda vehicles. These instructions should not be performed by "do-it-yourselfers." Customers should not assume this bulletin applies to their vehicle or that their vehicle will develop the described concern. To determine if the information applies, customers should contact their nearest authorized Mazda dealership. Mazda North American Operations reserves the right to alter the specifications and contents of this bulletin without obligation or advance notice. All rights reserved. No part of this bulletin may be reproduced in any form or by any means, electronic or mechanical--including photocopying and recording and the use of any kind of information storage and retrieval system ---without permission in writing.

<p>Free map update period has expired</p>	 <p>Customer needs to go to "Buy content" to purchase map update.</p>
---	---

No. 13 How to Check Navi SD Card VIN Lock

Go to [Mazda Toolbox](#) (Version 4)

<p>Navi SD Card VIN Unlocked (Mazda Toolbox will not read card)</p>	
<p>Navi SD Card VIN Locked (VIN is displayed)</p>	

CONSUMER NOTICE: The information and instructions in this bulletin are intended for use by skilled technicians. Mazda technicians utilize the proper tools/ equipment and take training to correctly and safely maintain Mazda vehicles. These instructions should not be performed by "do-it-yourselfers." Customers should not assume this bulletin applies to their vehicle or that their vehicle will develop the described concern. To determine if the information applies, customers should contact their nearest authorized Mazda dealership. Mazda North American Operations reserves the right to alter the specifications and contents of this bulletin without obligation or advance notice. All rights reserved. No part of this bulletin may be reproduced in any form or by any means, electronic or mechanical--including photocopying and recording and the use of any kind of information storage and retrieval system ---without permission in writing.