

Lower Bed Reinforcement, Install
VN

FSB 856-003, Lower Bed Reinforcement, Install

(November 2021)

On certain Volvo VNL tractors having a 77" sleeper, there have been reports of lower bunk bed rails being bent. Volvo Trucks introduced a more robust bed frame channel in the VNL 860. These improved rails have been made backwards compatible and are available for retrofit in the field.

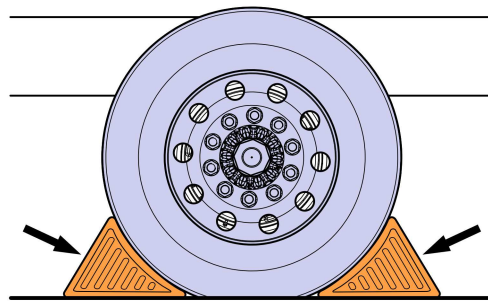
Required Parts

Part Description	Part Number	Quantity
C Channel	78631985	2
Rivet	8076524	6
Washer	20704898	6

Decommissioning the Truck for Repair

You must read and understand the precautions and guidelines in Service Information, group 80, "General Safety Practices, Electrical" before performing this procedure. If you are not properly trained and certified in this procedure, ask your supervisor for training before you perform it.

- 1 Park the vehicle on a flat and level surface.
- 2 Apply the parking brake.
- 3 Place the gear lever in neutral.
- 4 Install the wheel chocks.



W7086748

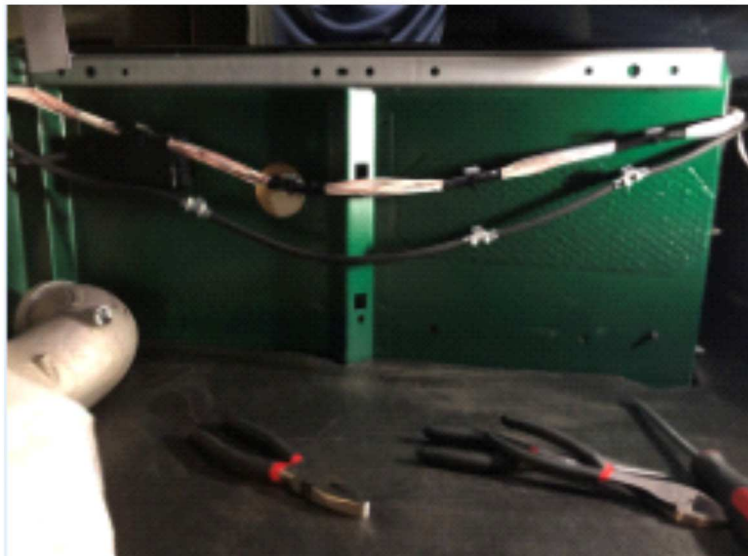
Repair Procedure

- 1 Remove bed mattress and bed support boards or table if equipped.



C8175598

- 2 Remove wiring harness clips on longitudinal upper bed frame edge.



C8175599

- 3 Remove carpet clips along top edge.



C8175600

- 4 Remove vent for sleeper HVAC, if equipped, and upper netting retainer, if equipped.



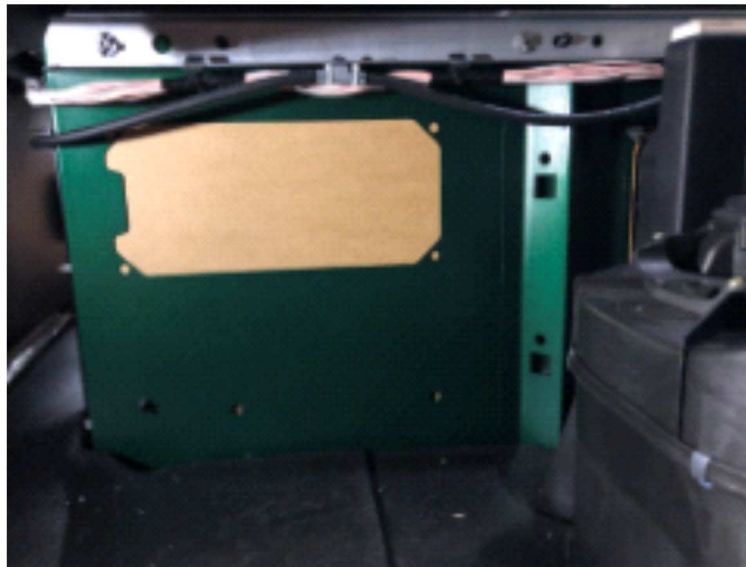
C8175601

- 5 Remove Electrical plug cover and upper netting retainer, if equipped.



C8175602

- 6 Insert new C channel inside existing channel, may need to slightly bend up top edge. Install new C channel with cutout at the top. One side will have the cutout at the front and the other will have it towards the back.



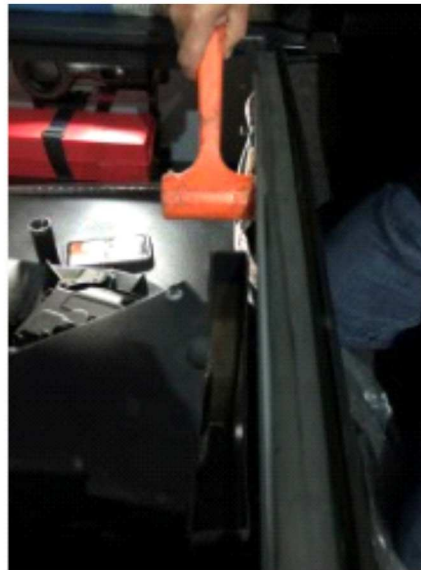
C8175603

7 Line up holes to match existing holes. Rear most holes can used as a guide.



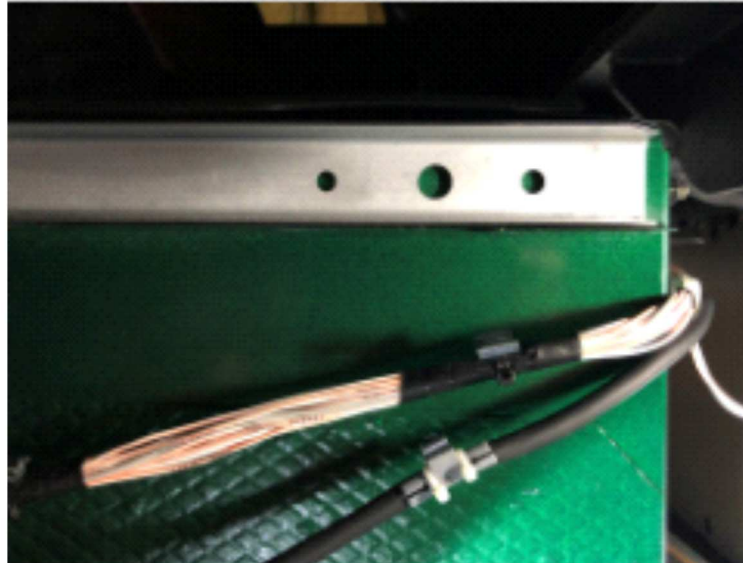
C8175604

8 Tap C channel in until it bottoms out.



C8175605

- 9 Rear two sets of 3 holes can be used as is. Front set of holes will need to have 1 hole drilled for rivet installation.



C8175606

- 10 Install rivets on the rear side of the center (carpet clip) hole at each position.



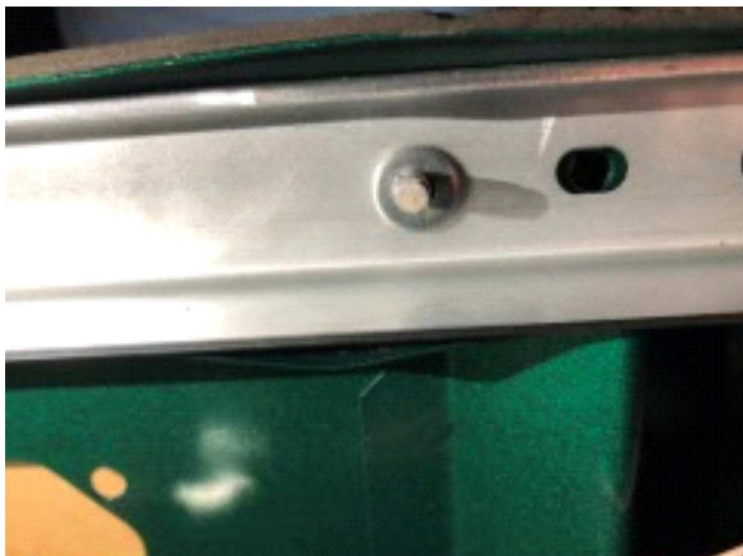
C8175607

11 Drill through rear hole, only on the front 3 holes, with 1/4" drill bit, taking care to not damage carpet.



C8175608

12 Install rivets, 8076524 from the carpet side, in each rear positioned hole, install washers on the c channel side of the prior to compressing the rivets.



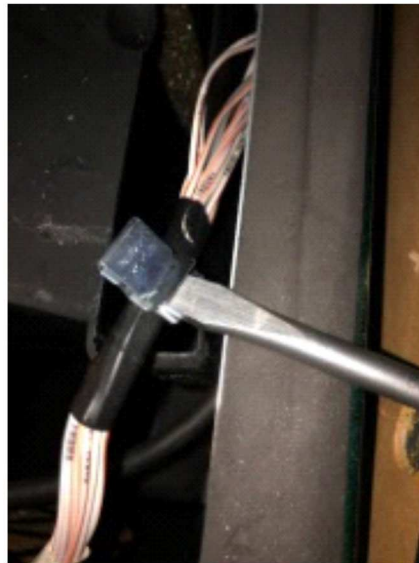
C8175609

13 Pull rivets making sure that everything is tight. Trim excess rivet off.



C8175603

14 Reinstall wiring harness clips, note clips may have to be **slightly** spread apart prior to reinstallation.



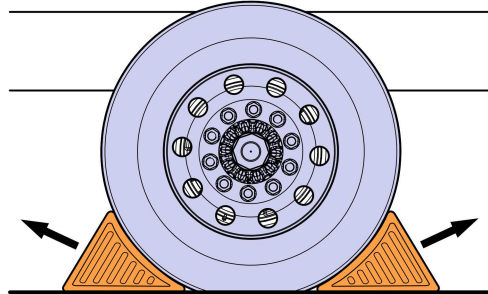
C8175610

15 Reinstall all carpet plugs, netting holder, electrical plug cover, and vent cover (if equipped).

16 Reinstall bed support boards and mattress

Commissioning the Truck for Operation

- 1 Remove the wheel chocks.



W7086759

- 2 Place the gear lever in neutral.
Note: Ensure that the handbrake is applied.
- 3 Start the engine.
- 4 Fill the pneumatic system.

Reimbursement

This repair may be eligible for reimbursement if a product failure was experienced within time and mileage limits of the applicable Warranty coverage. Reimbursement is obtained via the normal claim handling process.	UCHP Reimbursement
Claim Type (used only when uploading from the Dealer Bus. Sys.)	B
Labour Code Lower bed reinforcement, Install	8561-02-09-01 1 hr
Causal Part	82717612, 84214268

Volvo Trucks North America reserves the right to make any changes in design or to make additions to or upon its products without incurring any obligations to install the same on vehicles previously built.