

March 18, 2016

02945 Version 1

MIL Comes On with DTC P0335 and/or P0339

AFFECTED VEHICLES

Year	Model	Trim	VIN Range
2013–15	Accord	All L4 except Hybrid	ALL
2016	Accord	2dr L4	1HGCT1...GA000001 thru 1HGCT1...GA005984
2016	Accord	4dr L4	1HGCR2...GA000001 thru 1HGCR2...GA100769
2015	CR-V	All	ALL
2016	CR-V	2WD	2HKRM3...GH000001 thru 2HKRM3...GH515239
2016	CR-V	2WD	3CZRM3...GG000001 thru CZRM3...GG701576
2016	CR-V	2WD	5J6RM3...GL000001 thru 5J6RM3...GL005557
2016	CR-V	AWD	5J6RM4...GL000001 thru 5J6RM4...GL028294
2016	CR-V	AWD	2HKRM4...GH000001 thru 2HKRM4...GH621578

SYMPTOM

The MIL is on with DTC P0335 (CKP sensor no signal) and or P0339 (CKP sensor circuit intermittent interruption).

POSSIBLE CAUSES

There is corrosion between the engine wire harness and the CKP sensor connector.

CORRECTIVE ACTION

Replace the engine wire harness and the CKP sensor.

PARTS INFORMATION

Part Name	Part Number	Quantity
Crank Sensor	37500-R60-U01	1
O-Ring	91333-PNC-006	1
Intake Manifold Gasket A	17115-5A2-A01	4
Engine Wire Harness (CR-V)	32110-5LA-405	1
Engine Wire Harness (2013 Accord 2.4L M/T)	32110-5A2-305	1
Engine Wire Harness (2013 Accord 2.4L CVT)	32110-5A2-405	1
Engine Wire Harness (2014–16 Accord 2.4L M/T)	32110-5A2-306	1
Engine Wire Harness (2014–16 Accord 2.4L CVT)	32110-5A2-406	1

CUSTOMER INFORMATION: The information in this bulletin is intended for use only by skilled technicians who have the proper tools, equipment, and training to correctly and safely maintain your vehicle. These procedures should not be attempted by “do-it-yourselfers,” and you should not assume this bulletin applies to your vehicle, or that your vehicle has the condition described. To determine whether this information applies, contact an authorized Honda automobile dealer.

WARRANTY CLAIM INFORMATION

The normal warranty applies.

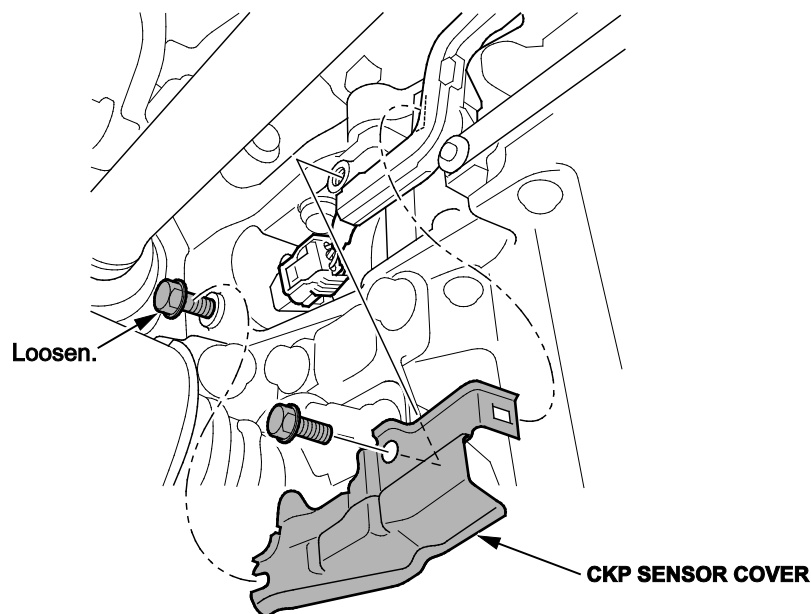
Operation Number	Description	Flat Rate Time	Defect Code	Symptom Code	Template ID	Failed Part Number
7371BT	Replace the engine harness and the CKP sensor (2015–16 CR-V).	3.2 hrs	00801	03203	16-011A	32110-5LA-405
7371BT	Replace the engine harness and the CKP sensor (2013 Accord 2.4L M/T)	2.1 hrs			16-011B	32110-5A2-405
7371BT	Replace the engine harness and the CKP sensor (2013 Accord 2.4L CVT).	2.1 hrs			16-011C	
7371BT	Replace the engine harness and the CKP sensor (2014–16 Accord 2.4L M/T).	2.1 hrs			16-011D	
7371BT	Replace the engine harness and the CKP sensor (2014–16 Accord 2.4L CVT)	2.1 hrs			16-011E	

Skill Level: Repair Technician

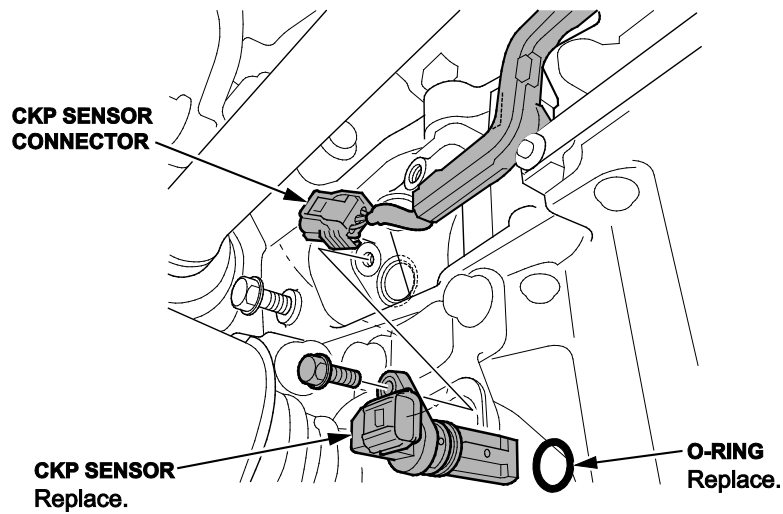
REPAIR PROCEDURE

The following service information procedures have been used in full or in part within this service bulletin. For more detail on these procedures and torque specifications, refer to the service information.

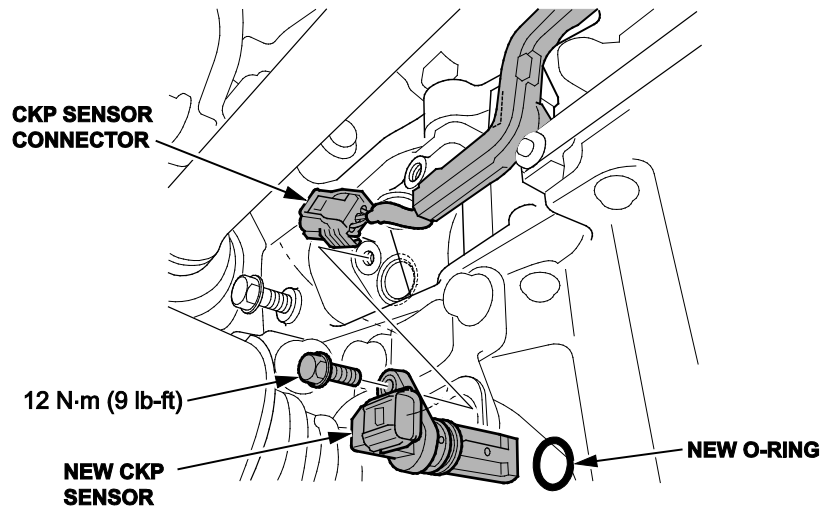
- Remove the air intake tube.
 - Remove the air intake box.
 - Remove the intake manifold.
 - Remove the battery.
 - Remove the battery base.
1. Loosen the bolt, then remove the second bolt and the CKP sensor cover.



2. Disconnect the CKP sensor connector.

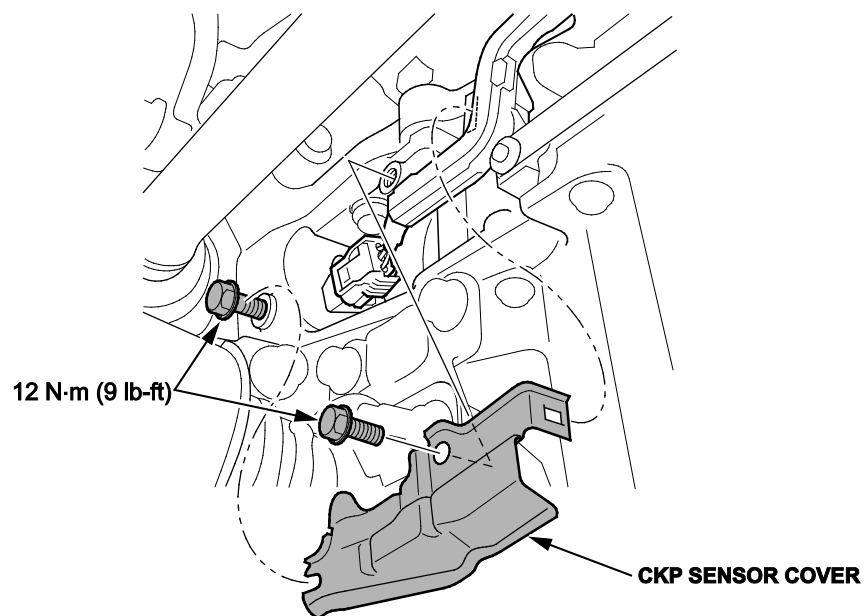


3. Remove the CKP sensor.
4. Replace the engine wire harness with the new harness. To replace the engine wire harness remove the following components:
 - Air intake tube
 - Air intake box
 - Intake manifold
 - Battery
 - Battery base
5. Install the new CKP sensor with a new O-ring.



6. Connect the CKP sensor connector.

7. Install the CKP sensor cover.



8. Replace all removed parts in the reverse order of removal.
9. Do the CKP pattern clear/CKP pattern learn procedure.

END