

Excessive resistance of door side windows when being raised/lowered, cracking and squeaking noises

Topic number	LI72.00-P-072603
Version	2
Function group	72.00 - General
Date	8/11/21
Validity	MODEL V167 Front doors: From production date September 2019 to April 2021 MODEL V167 Rear doors: From production date September 2019 to May 2021 MODEL C167.3 Rear doors: From production date September 2019 to June 2021 MODEL X167.9 Rear doors: From production date September 2019 to June 2021
Reason for change	Optimized parts available, part numbers updated.

Complaint

Excessive resistance of door side windows when being raised/lowered, cracking and squeaking noises.

Cause

Sealing lip of inner sealing rail, see Picture 1 and Picture 2, pos. 90, folds down while side windows are being lowered (opened).

When the side windows are raised (closed), the sealing lip is pulled back up again.

Attachments	
File	Description
Bild 1.JPG	

XENTRY TIPS

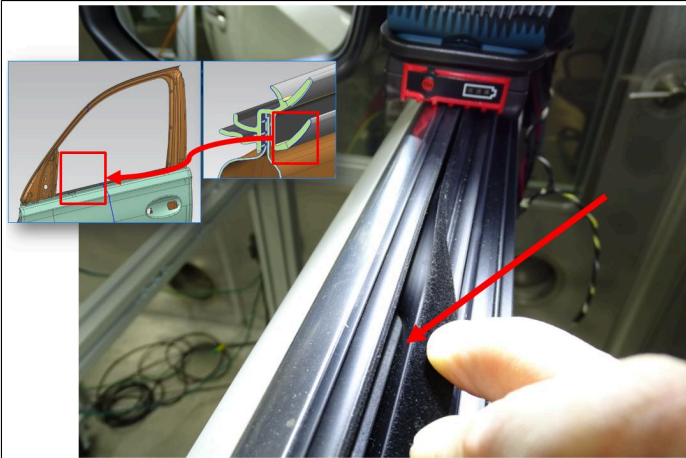
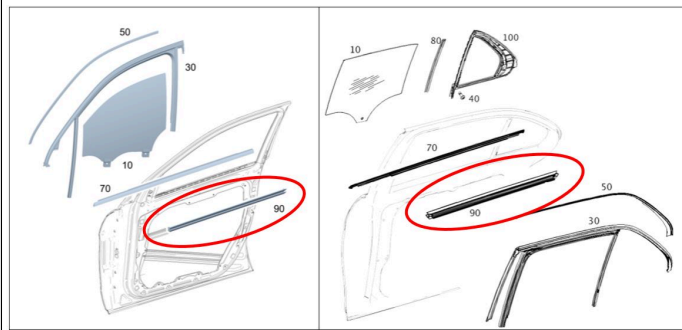


Bild 2.JPG



Remedy

Replace inner sealing rail.

Then perform normalization of the window lifter system in the relevant door control unit.

Note:

- For this complaint, no other surrounding component parts, such as outer sealing rails (Pos.70 in Picture 1 and 2), window lifter components or door control units, must be replaced or flashed.
- Many sealing rail part numbers are listed in this document for various body styles and options. Confirm which part number is valid for the vehicle using XPPI.

Symptoms

Body > Glazing > Window lifting mechanism/window operation > Remains stationary

Body > Glazing > Window lifting mechanism/window operation > Does not run up

Body > Glazing > Window lifting mechanism/window operation > Does not run down

Body > Glazing > Window lifting mechanism/window operation > Stiff/sluggish

Body > Glazing > Window lifting mechanism/window operation > Noise

Body > Glazing > Side window > Noise

Parts

XENTRY TIPS

Part number	ES1	ES2	Designation	Quantity	Note	EPC
A 167 735 64 00			Inner right sealing rail	1	Valid for MODEL 167.9	X
A 167 735 39 01			Inner left sealing rail	1	Valid for MODEL 167.1	X
A 167 735 40 01			Inner right sealing rail	1	Valid for MODEL 167.1	X
A 167 735 61 01			Inner left sealing rail	1	Valid for MODEL 167.1 with code 297	X
A 167 735 62 01			Inner right sealing rail	1	Valid for MODEL 167.1 with code 297	X
A 167 735 63 01			Inner left sealing rail	1	Valid for MODEL 167.9 with code 297	X
A 167 735 64 01			Inner right sealing rail	1	Valid for MODEL 167.9 with code 297	X

Operation numbers/damage codes

Op. no.	Operation text	Time	Damage code	Note
			72A3236	
			72N3236	
			73N3236	
			73A3236	