



Technical Service Bulletin

60 Sunroof frame modification
60 22 58 2065731/1 January 8, 2022.

Model(s)	Year	VIN Range	Vehicle-Specific Equipment
Q3, Q8, and Audi e-tron quattro	2019 – 2022	All	Not Applicable
Audi e-tron Sportback quattro	2020 – 2022	All	Not Applicable

Condition

Customer states:

Various complaints where the technical solution is to replace the front sunroof glass panel or sunroof frame.

Workshop findings:

If it is necessary to replace the front sunroof glass panel or sunroof frame for any reason, it may be necessary to modify the sunroof frame.

Technical Background

The development progression of the sunroof assembly has changed such that the replacement components, specifically the sunroof frame and front sunroof glass panel, may require a modification to complete the assembly compatibility.

Production Solution

Replacement parts for the front sunroof glass panel and sunroof frame, which will not require modification, are currently in development.

Service



Technical Service Bulletin

1. If the sunroof frame and/or front sunroof glass panel require replacement the water guidance washer on the sunroof mechanism pivot protrudes to the extent that the rubber "skirt" on the front glass panel also protrudes creating interference between the glass panel and the sunroof opening. This interference can prevent the front glass panel closing sequence from completing.
2. Figure 2 shows the location of the "skirt" protrusion from the water guidance washer.

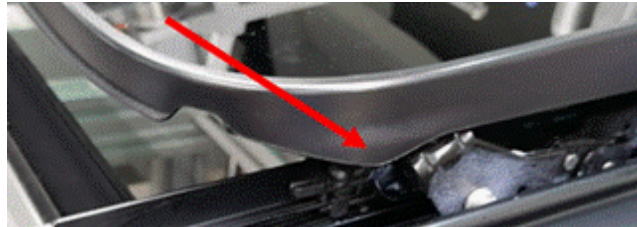


Figure 1. Front sunroof glass panel side skirt deformed due to a protruding water guidance washer.



Figure 2. Front sunroof glass panel side skirt protrusion from an unmodified water guidance washer.



Technical Service Bulletin

3. Figure 3 shows the water guidance washer with the front sunroof glass panel removed.

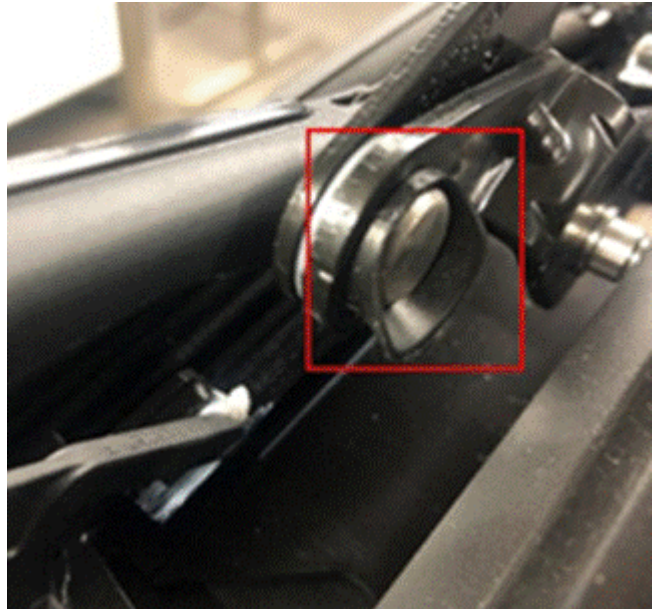


Figure 3. Water guidance washer on the front frame mechanism pivot.

4. Remove the front sunroof glass panel. Using a small pair of diagonal cutters (side cutters) trim away the water guidance washer. The washer must be cut back such that it protrudes no greater than the pivot pin. Perform this operation to both sides.

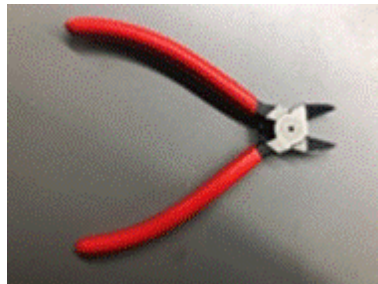


Figure 4. Diagonal cutters (side cutters).



Technical Service Bulletin

5. Figure 5 shows the removed water guidance washer trimmed below the pivot pin. Since this pivot pin is concealed by the front sunroof glass panel "skirt" it is not necessary to smooth the edges of the cut surfaces.



Figure 5. Water guidance washer on the front frame mechanism pivot.

6.  Note:

During the modification procedure exercise extreme caution not to scratch or otherwise damage the surrounding metal components of the sunroof frame and lifting mechanism. Surround the area being modified with masking tape if necessary.

7.  Note:

Ensure that all plastic fragments from the water guidance washer created during the modification are removed completely. Use a vacuum cleaner if necessary. Stray plastic fragments from this modification that remain will cause permanent damage to the sunroof frame mechanism.

8. Reinstall the front sunroof glass panel and adjust it according to the specifications in ElsaPro. Remember to set the sunroof panel and rollershade end stop adaptation after reassembly using the sunroof panel and rollershade switches. Refer to TSB 2054505: *60 Sunroof glass panel or sunroof rollershade do not operate* for instructions.

Warranty

Claim Type:	<ul style="list-style-type: none">• 110 up to 48 Months/50,000 Miles.
-------------	---



Technical Service Bulletin

	<ul style="list-style-type: none">• G10 for CPO Covered Vehicles – Verify Owner.• If the vehicle is outside of any warranty, this Technical Service Bulletin is informational only.		
Service Number:	6028		
Damage Code:	0010		
Labor Operations:	Glass tilting roof panel (front) remove and reinstall.	60 39 19 00	See SRT with associated operations
	Perform modification to water guidance washer – Both sides	60 28 50 99	10 TU
Diagnostic Time:	GFF – Perform sunroof end stop adaptation	0150 0000	10 TU
	Road test prior to the service procedure	No allowance	0 TU
	Road test after the service procedure	No allowance	0 TU
Claim Comment:	As per TSB #2065731/1		

All warranty claims submitted for payment must be in accordance with the *Audi Warranty Policies and Procedures Manual*. Claims are subject to review or audit by Audi Warranty.

Required Parts and Tools

Additional Information

The following Technical Service Bulletin(s) will be necessary to complete this procedure:

- TSB 2054505: *60 Sunroof glass panel or sunroof rollershade do not operate.*



Technical Service Bulletin

All part and service references provided in this TSB (2065731) are subject to change and/or removal. Always check with your Parts Department and/or ETKA for the latest information and parts bulletins. Please check the Repair Manual for fasteners, bolts, nuts, and screws that require replacement during the repair.

©2022 Audi of America, Inc. All rights reserved. The information contained in this document is based on the latest information available at the time of printing and is subject to the copyright and other intellectual property rights of Audi of America, Inc., its affiliated companies, and its licensors. All rights are reserved to make changes at any time without notice. No part of this document may be reproduced, stored in a retrieval system, or transmitted in any form or by any means, electronic, mechanical, photocopying, recording, or otherwise, nor may these materials be modified or reposted to other sites, without the prior expressed written permission of the publisher.