



# Mack Chassis - Granite 7 Series (GU, GU7, M058, M746, M748) - Cracks, Breakage Or Fatigue Found Around The Hood Guide - Vehicles Built From Feb 2010 Through 20 Nov 2017



> Internal Content

**NOTE: This article covers the Granite 7 series ONLY. For Granite 8 series, refer to solution CBR-221.**

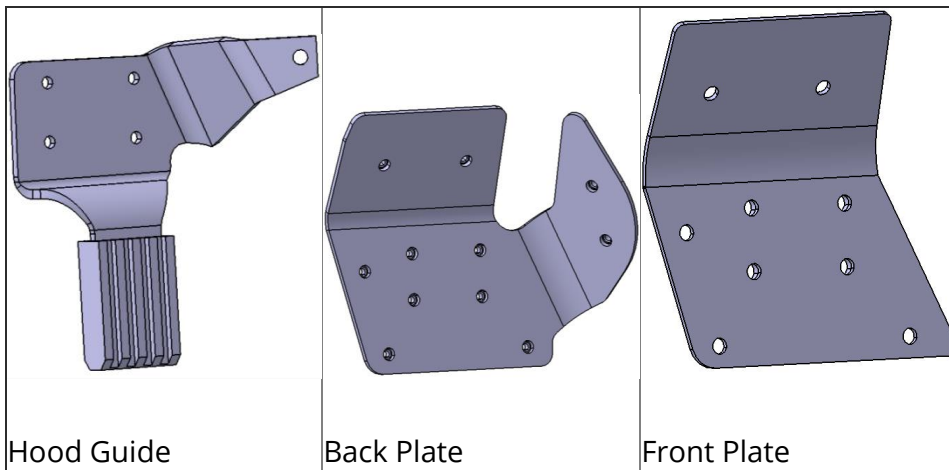
The entire document should be reviewed and understood prior to performing any repair procedures to determine if repair is a viable option.

## 1. Parts

For this repair the following parts are required:

- 1 - 84752067 Left-hand backing plate install kit
- 1 - 84752065 Right-hand backing plate install kit

Each kit will contain hardware and the following three parts:



## 2. Inspection

2.1. Before beginning any repairs, carefully inspect the hood reinforcement at the rear of the hood on both the right and left



- Cracks visible around the guide and backing plate will be secured by the new part. An example is shown below:



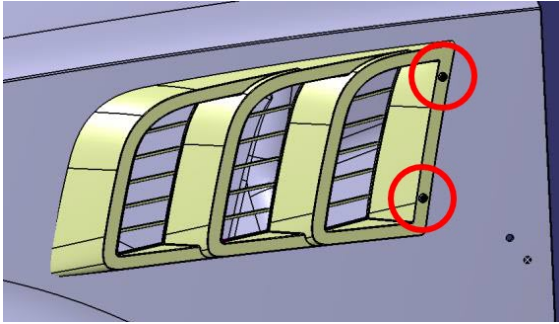
- For a hood guide that has broken away from the hood, the hood may be reused as long as the hole is not much bigger than the old guide bracket. The new plates and guide will attach around the damage:



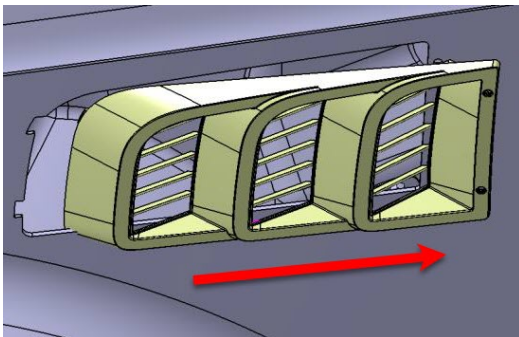
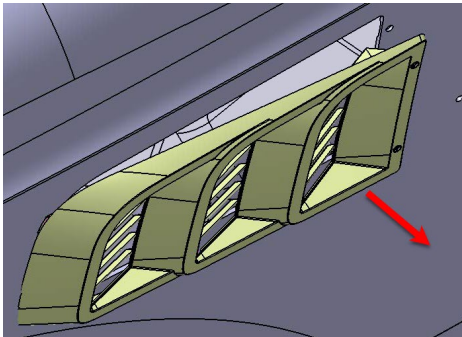
- If there is any other damage to either side beyond what can reasonably be repaired with the procedure below, replacement of the hood is recommended.

### 3.1. Remove the Air Intake Grille

**3.1.1.** Remove the two screws located at the rear of the grille as shown below



**3.1.2.** Pull the rear of the grille away from the hood, then slide the grille toward the cab to disengage the front mounting tabs.



### 3.2. Remove the old backing plate if it is still attached to the hood.

**3.2.1.** Unbolt the three mounting bolts for the plates.

**3.2.2.** Grind off or drill out the two rivets holding the plate in position.

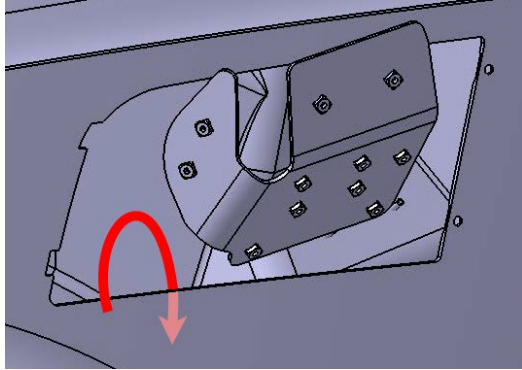
**3.2.3.** Remove the backing plate through the air intake opening.

## 4. HOOD PREPARATION

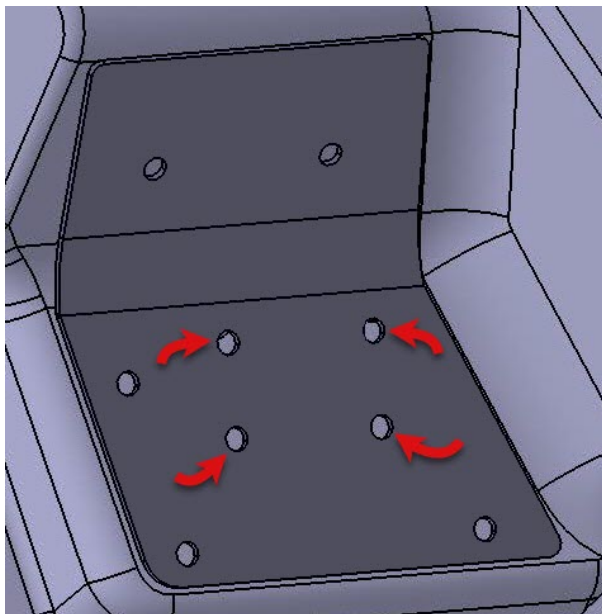
### 4.1. Mark the hood for new holes to be drilled.

**4.1.1.** Obtain a new (updated) backing plate and front plate.

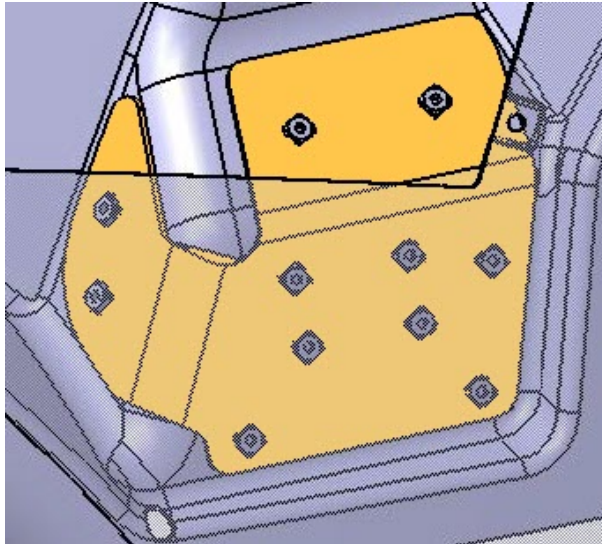
**4.1.2.** Insert the backing plate through the air inlet opening. Hold the plate in its installation position.



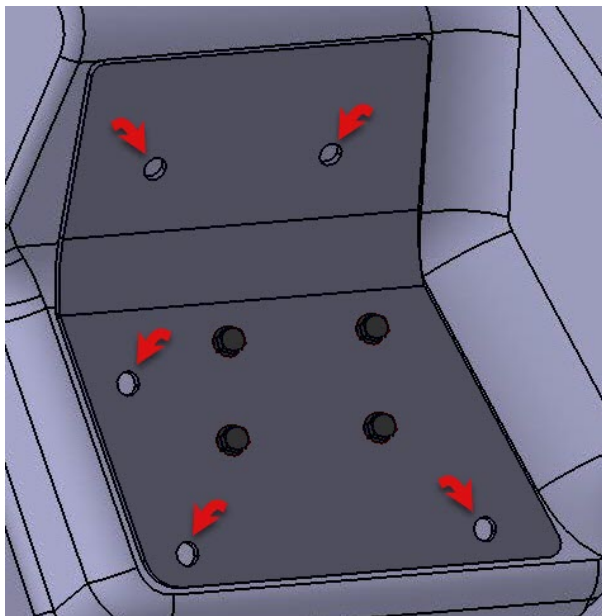
**4.1.3.** Put the new front plate into position on the underside of the hood. Temporarily bolt the front plate the back plate using the four center holes indicated below:



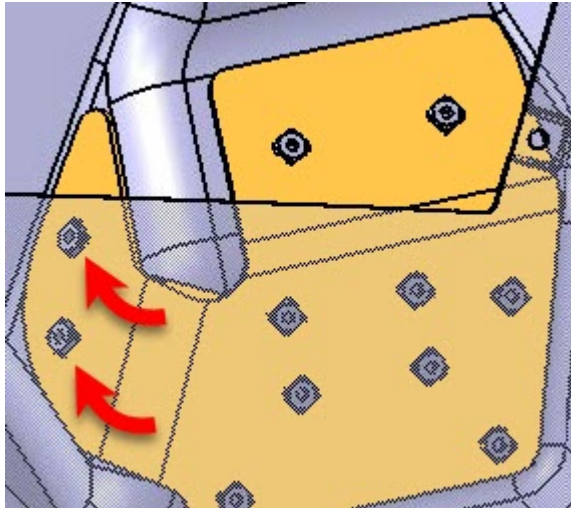
**4.1.4.** Prior to tightening the bolts or making any marks, ensure the backing plate is in proper contact (flush) with all three of the surfaces it will mount to as shown below:



**4.1.5.** On the front plate, mark the position of all of the remaining holes



**4.1.6.** On the backing plate, mark the two holes indicated below.



**4.1.7.** Unbolt and remove the front and back plates

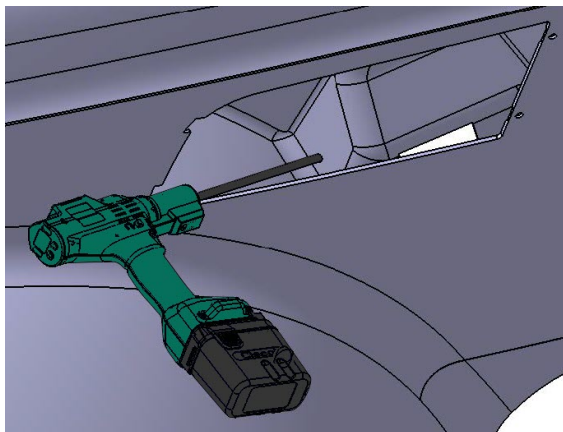
## **4.2. Drill holes for the new backing and front plate mounting hardware.**

### **IMPORTANT**

Care should be taken not to pierce the outer hood skin when performing the operation below.

**4.2.1.** From the inside of the air intake plenum, drill two pilot holes through the marks made in 4.1.6

- A long drill bit or a drill bit with a bit extension is recommended.



**4.2.2.** Locate the pilot holes on the underside of the hood (the opposite side from which the pilot holes were drilled).

**3.** Drill two 12 millimeter holes through the pilot holes.



**4.2.4.** Drill 9 millimeter holes for the five marks made from the

**4.2.4.** Drill 9 millimeter holes for the five marks made from the front plate.

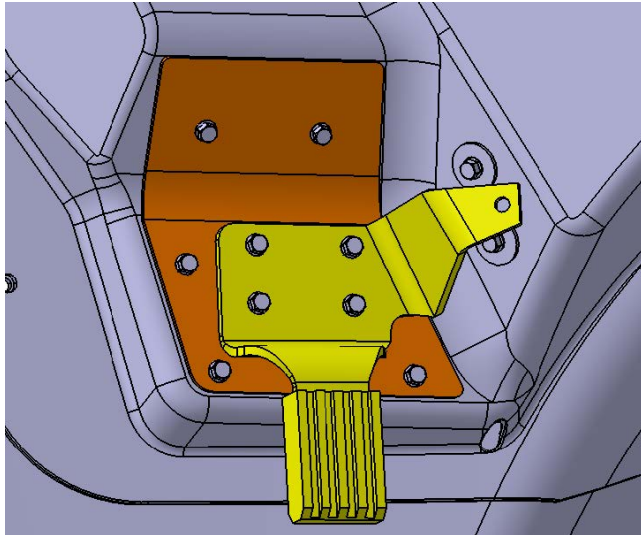
## 5. Reassemble the hood guide with the new backer plate.

**5.1.** Insert the new backing plate through the air intake opening and into install position

**5.2.** Using five of the bolts included with the installation kit, secure the front plate to the backing plate through the five new holes drilled in 4.2.4.

**5.3.** 2 bolts and the 2 washers included in the kit should be used to secure the backing plate through the 2 holes drilled in 4.2.3.

**5.4.** The 4 remaining bolts in the kit should be used to secure the new hood guide to the plates.



## 6. Reinstall the Air Intake Grille.

**6.1.** Installation is the reverse of the removal steps described in Step 2.

 Tags

[hood](#)

[cracks](#)

[cracking](#)

[k49500021](#)

[mack](#)

**Related links and attachments**

[KC-294 REF KC-221](#)



**Feedback**

[Give feedback](#)

to help improve the content of this article





## **Mack Chassis - Granite 8 Series (GU, GU8, GR, M059, M753, M755) - Hood Guide Backing Plate - Updated Part Information And Installation Procedure;**



> Internal Content

**NOTE: This article covers the Granite 8 series ONLY. For Granite 7 series, refer to solution CBR-294.**

The entire document should be reviewed and understood prior to performing any repair procedures to determine if repair is a viable option.

### **1. Parts**

**For this repair the following parts are required:**

- 1 - 23367296 Left-hand backing plate
- 1 - 23367245 Right-hand backing plate
- 4 - 996452 Bolt (2 per backing plate)
- 4 - 994850 Washer (2 per backing plate)

### **2. Inspection**

**2.1 Before beginning any repairs, carefully inspect the hood reinforcement at the rear of the hood on both the right and left side.**

- Cracks visible around the guide and backing plate that are not severe will be secured by the new part. An example is shown below:



- If the cracks have spread to the point that the guide and backing plate are missing support along multiple edges or is completely broken out, the hood will need to be replaced.

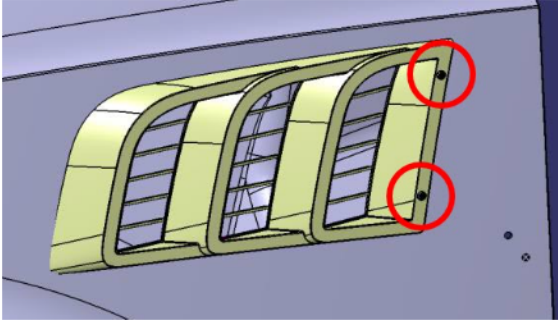


- If there is any other damage to either side beyond what can be repaired with the procedure below, replacement of the hood is recommended.

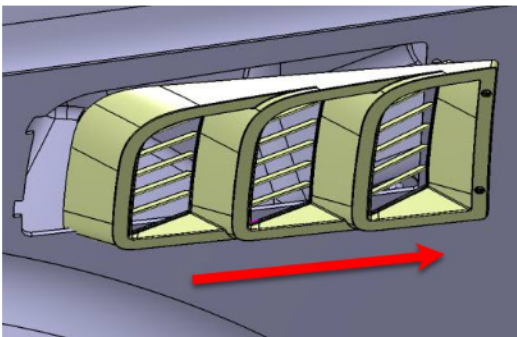
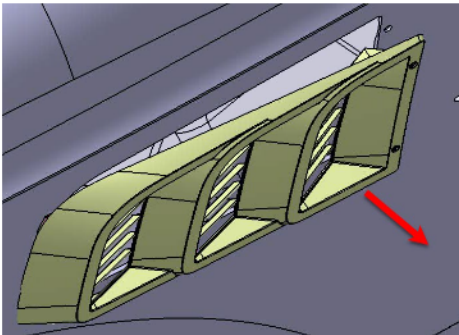
## 3. Old Backing Plate Removal

### 3.1. Remove the Air Intake Grille

**3.1.1.** Remove the two screws located at the rear of the grille as shown below



**3.1.2.** Pull the rear of the grille away from the hood, then slide the grille toward the cab to disengage the front mounting tabs.



### 3.2. Remove the old backing plate.

**3.2.1.** Unbolt the three mounting bolts for the plates.

**3.2.2.** Grind off or drill out the two rivets holding the plate in position.

 Live UI Remove the backing plate through the air intake opening.

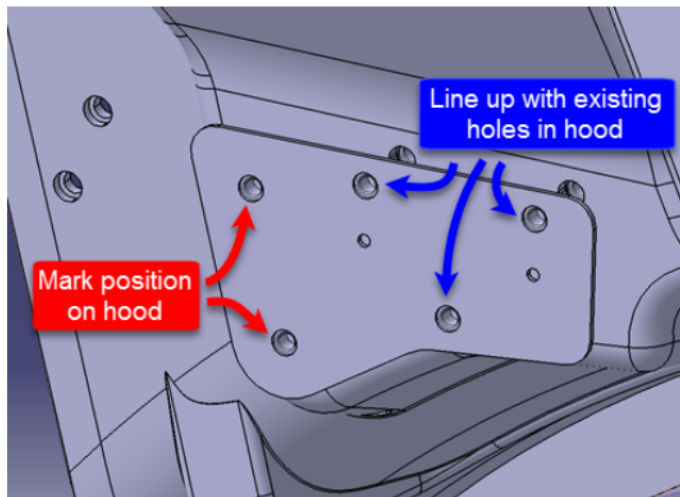
## 4. Hood Preparation

### 4.1. Mark the hood for new holes to be drilled.

**DO NOT install the new backing plate at this time.**

#### 4.1.1. Obtain a new (updated) backing plate.

**4.1.2.** The new plate will have three holes that line up with the old design's mounting bolt holes. Align the holes in the new plate with the bolt holes on the inside of the hood. Mark the two holes for each plate indicated in the diagram below:



#### 4.1.3. Set the new backing plate aside until Step 4.

### 4.2. Drill holes for the new backing plate mounting hardware

#### **IMPORTANT**

Care should be taken not to pierce the outer hood skin when performing the operation below.

**4.2.1** From the inside of the hood, drill one 10 millimeter hole at each of the two marks made in Step 4.1.

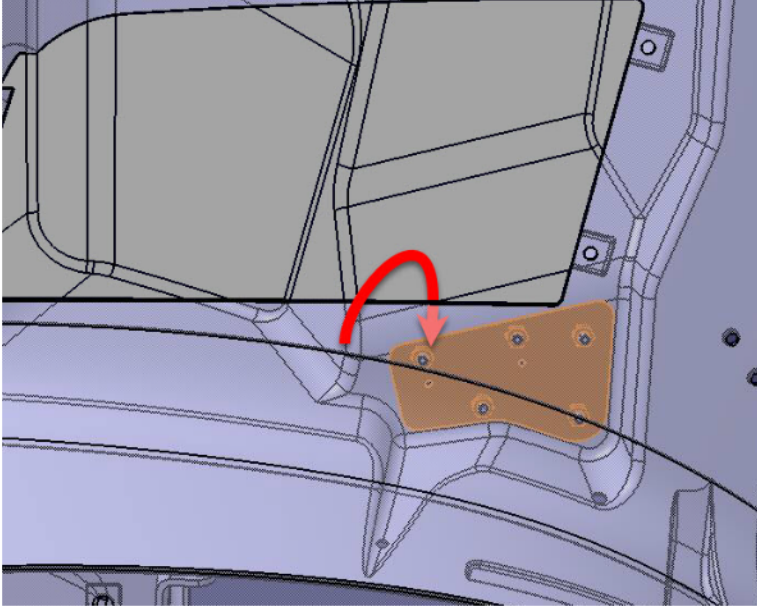
## 5. Reassemble the hood guide with the new backer plate.

**5.1** Insert the new backing plate through the air intake opening.

 Live UI

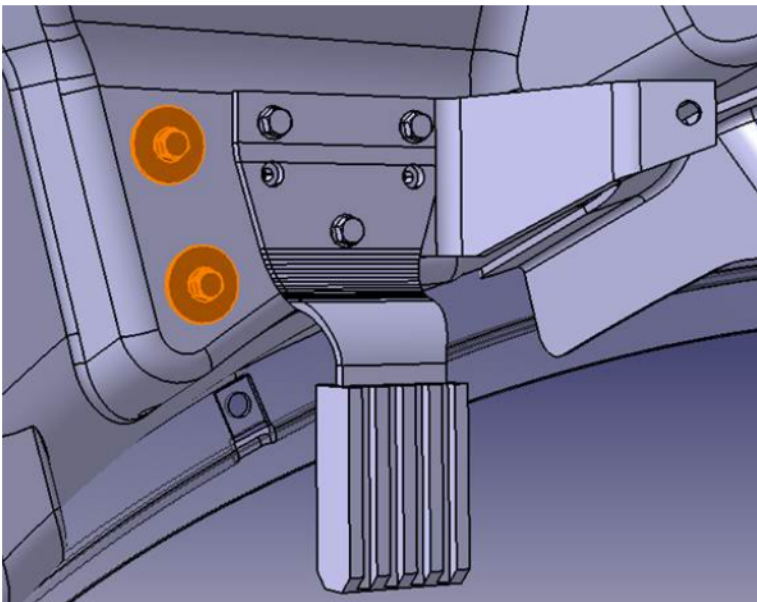
**5.1.1 Optional:** Rivet the backing plate to the hood using the holes

**5.1.1. Optional.** Rivet the backing plate to the hood using the holes that corresponded to the ones in the old backing plate.



**5.2.** Using the three original bolt holes, reinstall the three mounting bolts to secure the guide to the backing plate.

**5.3.** Install the two additional bolts and washers specified above in the new holes drilled in Step 4.2.



## 6. Reinstall the Air Intake Grille.

**6.1.** Installation is the reverse of the removal steps described in

 Live UI

 Tags

[hood](#)

[cracks](#)

[cracking](#)

[k30528053](#)

[mack](#)

**Related links and attachments**

No links or attachments available



**Feedback**

[Give feedback](#)

to help improve the content of this article