

**WMH7 - Retrofitting or Replacing Air Intake Grille (Workshop Campaign)**

Model Line: **718 Boxster (982) / 718 Cayman (982)**

Model Year: **As of 2017 up to 2022**

Concerns: **Protective grilles for the air intakes**

Information: **There is a possibility that leaves and particles of dirt can get into the side air intakes and accumulate in the air guide under certain environmental conditions.**

If the relevant warning in the Driver's Manual is not observed and burning cigarettes or cigars are also thrown out of the vehicle, this can pose a risk of a smouldering fire developing in the engine compartment.

Action required: Retrofit or replace protective grilles for the air intakes at the left and right.

Affected Vehicles: Only vehicles assigned to the campaign (see also PCSS Vehicle Information).



**Information**

To find out which campaign scope is assigned to the respective vehicle for **retrofitting the protective grilles**, see PCSS Vehicle Information.

**Scopes 1 and 2:** Vehicles from campaign WJ35 that have not **yet been retrofitted or open**

- Cleaning rear air intakes **and** retrofitting additional protective grilles

⇒ *Technical Information 'Retrofitting additional protective grilles for the air intakes - scopes 1-2'*

**Scope 3:** Vehicles that have already been retrofitted for the **first time during campaign WJ35**

- Install protective grille

⇒ *Technical Information 'Replacing protective grille for air intakes - Scope 3'*

**Scope 4:** Vehicles with **protective grille that has already been injected in the air duct** (standard solution for After Sales measure campaign WJ35)

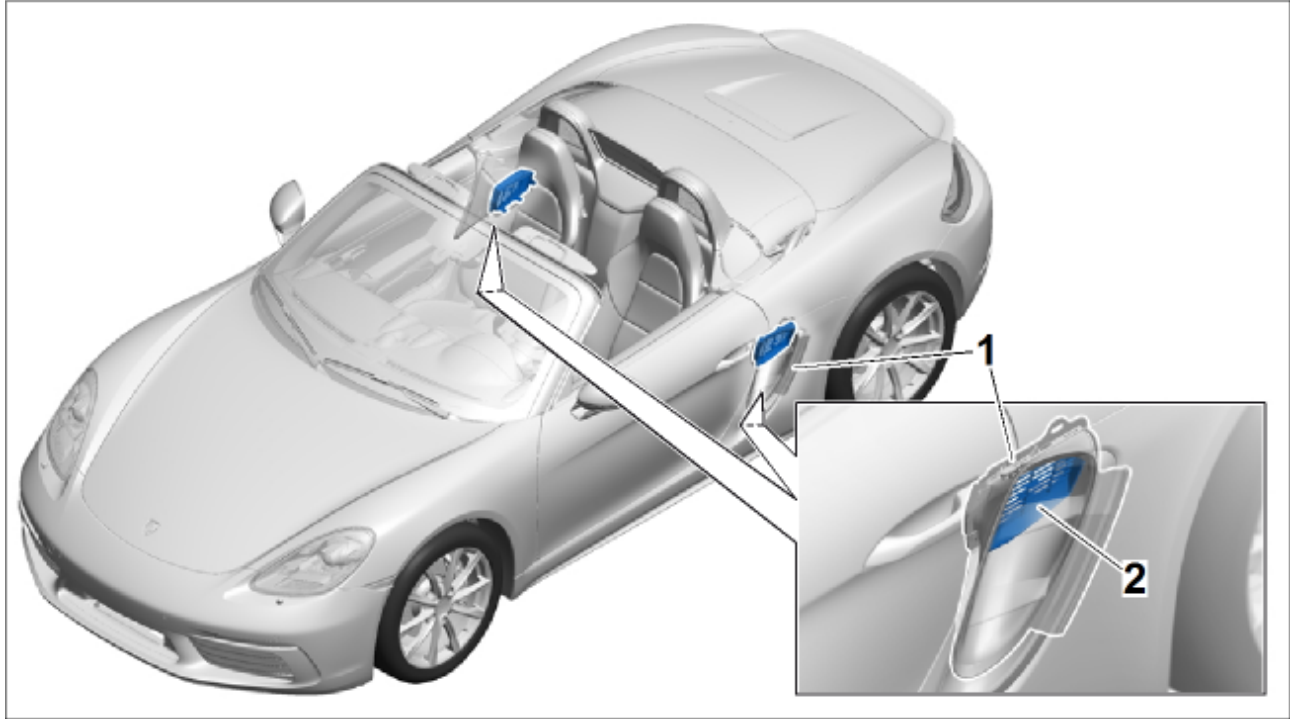
- Cut out protective grille (injected) **and** install new protective grille

⇒ *Technical Information 'Replacing protective grille (injected) for the air intakes - Scope 4'*

For an overview of the campaign scopes, see ⇒ *Technical Information 'Warranty processing section'*

## Installation

Position:

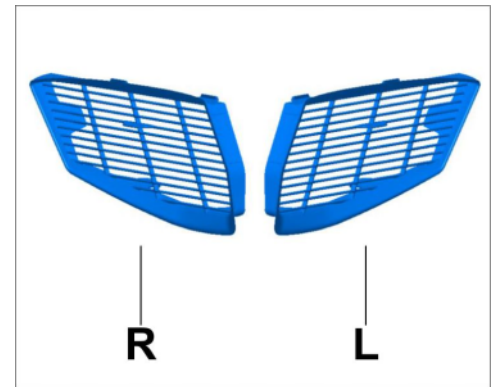


*Installation position for additional protective grilles*

- 1 – Air intake
- 2 – Protective grille

### Parts required

Parts Info:	Part No.	Designation	Number
	V04015800AA	⇒ Protective grille set	1 unit
	includes:		
	982825483A OK1	Left protective grille	1 unit
	982825484A OK1	Right protective grille	1 unit



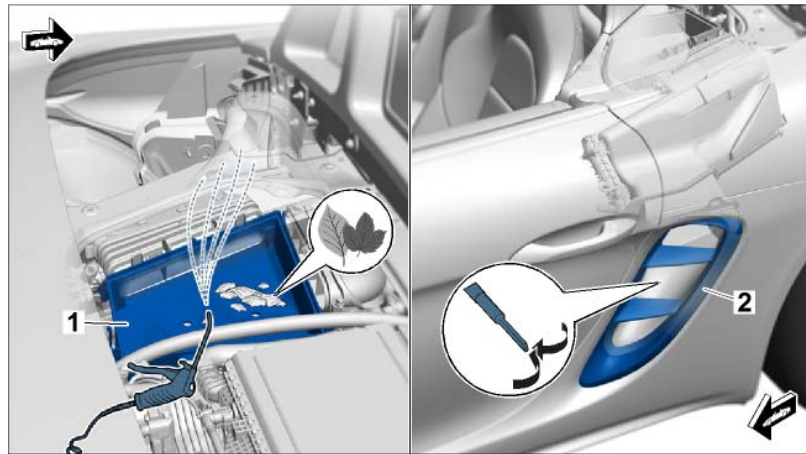
Left/right protective grille

**Required tools**

- Tool:
- Electronic torque wrench with angle control, 2 - 100 Nm (1.5 - 74 ftlb.), e.g. **9768 - electronic torque wrench, 2 - 100 Nm (1.5 - 74 ftlb.)**
  - Vacuum cleaner
  - Air blow gun with long nozzle
  - Body saw
  - Bar sander

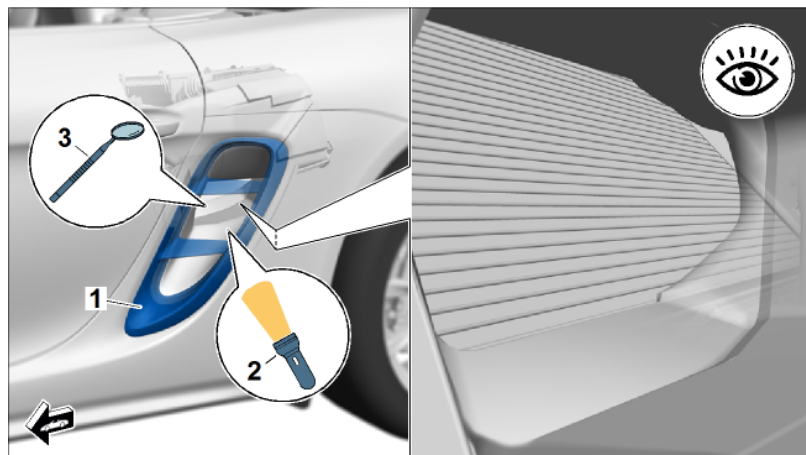
**Retrofitting additional protective grilles for the air intakes - scopes 1-2**

- Work Procedure: 1 Check left air intake for dirt and clean it if necessary.
- 1.1 Remove trim panel for convertible top compartment/engine compartment lid. ⇒ *Workshop Manual '700819 Removing and installing trim panel for convertible top compartment/engine compartment lid'*
  - 1.2 Remove engine compartment cover. ⇒ *Workshop Manual '557819 Removing and installing engine compartment lid'*
  - 1.3 Remove air-cleaner element . ⇒ *Workshop Manual '242419 Removing and installing air-cleaner element'*
  - 1.4 Remove any dirt that has built up in the air cleaner housing ⇒ *Cleaning left air intake -1-* using a vacuum cleaner.



*Cleaning left air intake*

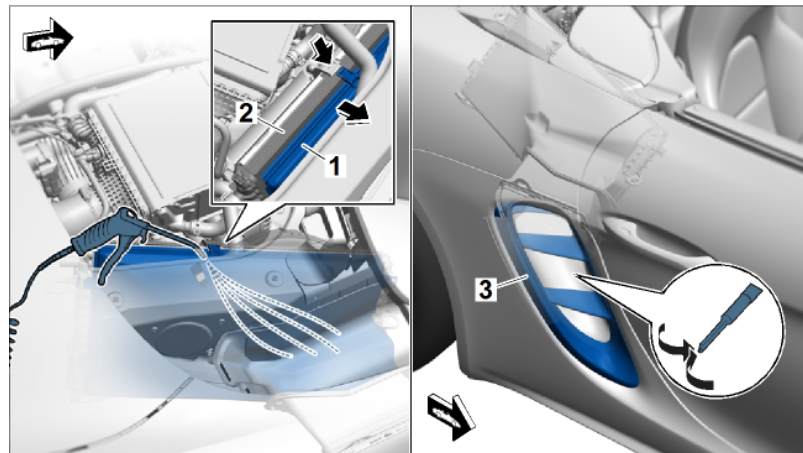
- 1.5 Blow out the complete air intake from the inside using an air blow gun with a long nozzle as shown in Figure ⇒ *Cleaning left air intake*.
- 1.6 Extract blown-out residual dirt from the left air intake ⇒ *Cleaning left air intake -2-* using a vacuum cleaner.
- 1.7 Illuminate the air intake ⇒ *Checking left air intake -1-* using a hand lamp ⇒ *Checking left air intake -2-* and check for residual dirt using a mirror ⇒ *Checking left air intake -3-*. Blow out the air intake again if necessary.



*Checking left air intake*

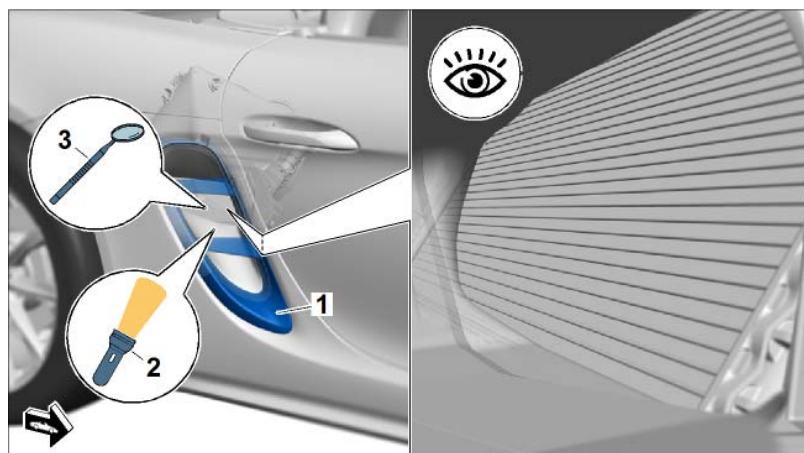
- 1.8 Install air-cleaner element. ⇒ *Workshop Manual '242419 Removing and installing air-cleaner element'*

- 2 Check the right air intake for dirt and clean it if necessary.



*Cleaning right air intake*

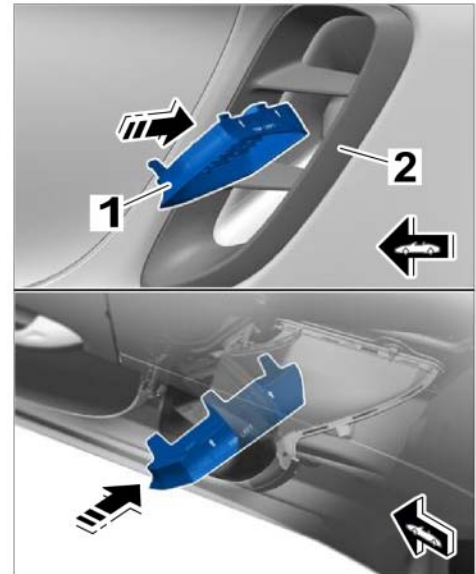
- 2.1 Unclip fan cover ⇒ *Cleaning right air intake -1-* at the top and press it aside slightly using a plastic wedge ⇒ *Cleaning right air intake -Pfeile-*.
- 2.2 Insert air blow gun with long nozzle between the fan cover ⇒ *Cleaning right air intake -1-* and radiator ⇒ *Cleaning right air intake -2-* and blow out the entire area in front of the radiator.
- 2.3 Extract blown-out residual dirt from the right air intake ⇒ *Cleaning right air intake -3-* using a vacuum cleaner.
- 2.4 Illuminate the air intake ⇒ *Checking right air intake -1-* using a hand lamp ⇒ *Checking right air intake -2-* and check for residual dirt using a mirror ⇒ *Checking right air intake -3-*. Blow out the air intake again if necessary.



*Checking right air intake*

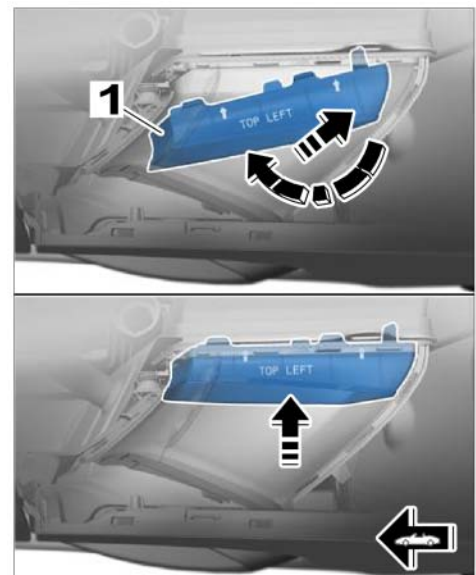
- 2.5 Clip fan cover back onto the radiator.
- 2.6 Install engine compartment cover ⇒ *Workshop Manual '557819 Removing and installing engine compartment lid'*.

- 2.7 Installing trim panel for convertible top compartment/engine compartment lid ⇒ *Workshop Manual '700819 Removing and installing trim panel for convertible top compartment/engine compartment lid'*.
- 3 Install protective grille (V04015800AA) at the **left and right**.
- 3.1 Guide protective grille ⇒ *Installing protective grille -1-* into the **center air duct** ⇒ *Installing protective grille -2-* on the left-hand side of the vehicle in such a way that the **TOP LEFT** marking on the protective grille is at the **top**. The **arrows** on the protective grille must be **pointing inwards**.



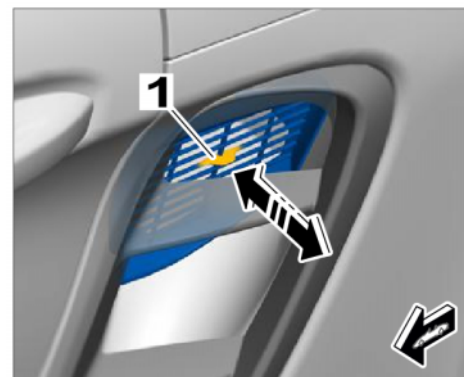
*Installing protective grille*

- 3.2 Position protective grille ⇒ *Positioning protective grille -1-* with the right edge in the air duct first and then press it as far as it will go into the air duct in the left area ⇒ *Positioning protective grille -Pfeile-*.
- 3.3 Press protective grille ⇒ *Positioning protective grille -1-* firmly into the air duct until the locking hooks engage securely with an audible click.



*Positioning protective grille*

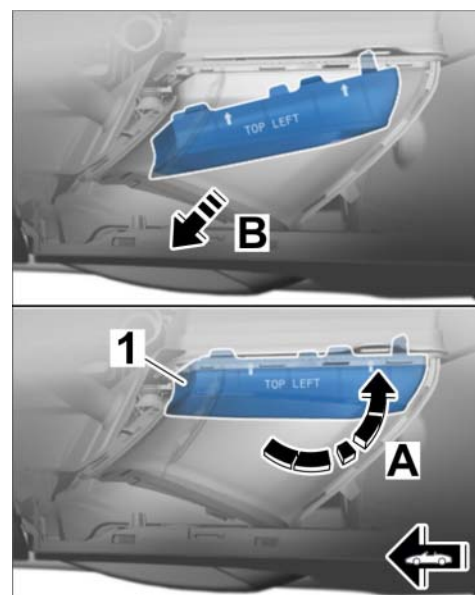
- 3.4 Check that the protective grille ⇒ *Engaging protective grille -1-* is installed securely by pulling on it ⇒ *Engaging protective grille -Pfeile-*.
- 4 End of remedial action. Continue with Warranty processing and invoice under **Scope 1 or 2.** ⇒ *Technical Information '700819 Warranty processing section'*
- 5 Enter the campaign in the Warranty and Maintenance booklet.



*Engaging protective grille*

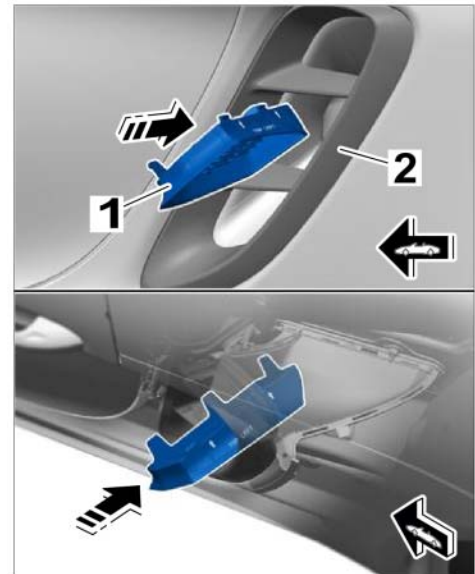
**Replacing protective grille for air intakes - Scope 3**

- Work Procedure: 1 Remove protective grille at the **left and right.**
- 1.1 Press protective grille ⇒ *Removing protective grille -1-* with the right edge firmly into the air duct first ⇒ *Removing protective grille -Pfeil A-* until it becomes detached from the anchoring system.
  - 1.2 ⇒ *Removing protective grille -1-* Turn protective grille and remove it from the air duct ⇒ *Removing protective grille -Pfeil B-*.
  - 1.3 Make protective grille unusable and dispose of it.



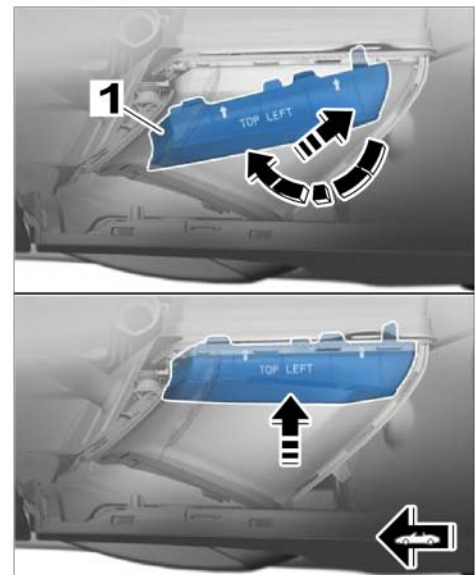
*Removing protective grille*

- 2 Install new protective grilles (V04015800AA) at the **left and right**.
  - 2.1 Guide protective grille ⇒ *Installing protective grille -1-* into the **center air duct** ⇒ *Installing protective grille -2-* on the left-hand side of the vehicle in such a way that the **TOP LEFT** marking on the protective grille is at the **top**. The **arrows** on the protective grille must be **pointing inwards**.



*Installing protective grille*

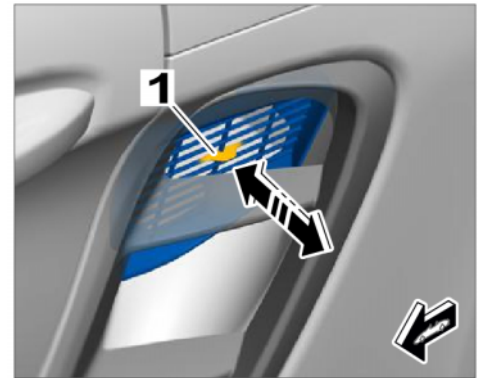
- 2.2 Position protective grille ⇒ *Positioning protective grille -1-* with the right edge in the air duct first and then press it as far as it will go into the air duct in the left area ⇒ *Positioning protective grille -Pfeile-*.
- 2.3 Press protective grille ⇒ *Positioning protective grille -1-* firmly into the air duct until the locking hooks engage securely with an audible click.



*Positioning protective grille*



- 2.4 Check that the protective grille ⇒ *Engaging protective grille -1-* is installed securely by pulling on it ⇒ *Engaging protective grille -Pfeile-*.
- 3 End of remedial action. Continue with Warranty processing and invoice under **Scope 3**. ⇒ *Technical Information '700819 Warranty processing section'*
- 4 Enter the campaign in the Warranty and Maintenance booklet.



*Engaging protective grille*

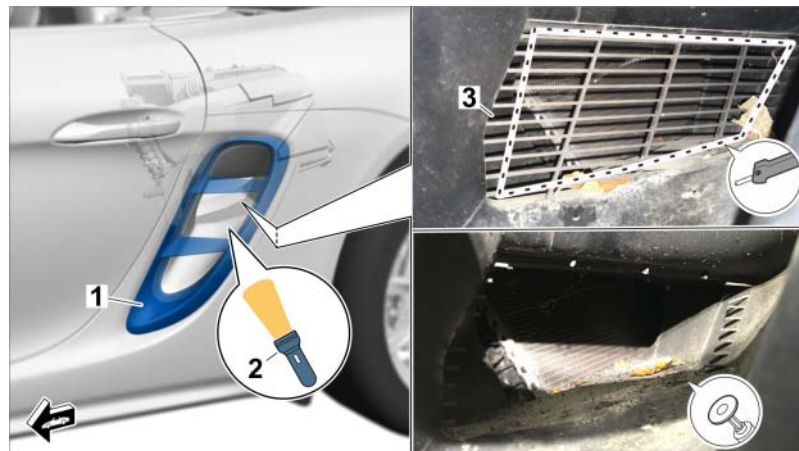
**Replacing protective grille (injected) for the air intakes - Scope 4**



**Pointed or sharp objects**

- Risk of nicks, cuts or scrapes
- ⇒ Wear personal protective gear.

Work Procedure: 1 Cut out injected protective grille at the **left and right** in the air duct.



*Removing protective grille*

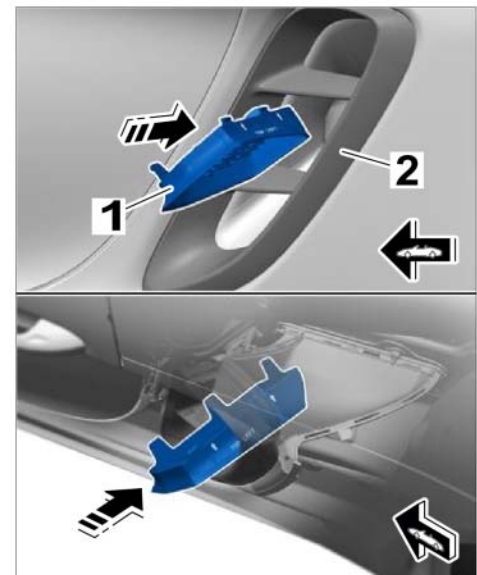
- 1.1 Illuminate the air intake ⇒ *Removing protective grille -1-* using a hand lamp ⇒ *Removing protective grille -2-*.
- 1.2 Cut through the protective grille struts ⇒ *Removing protective grille -3-* in the marked area using a body saw or alternatively using a suitable side cutter.
- 1.3 Remove protective grille and grind off the remaining pieces of the individual struts as far as the air duct using a bar grinder. Make sure that no depressions are created in the air duct.

- 1.4 Remove any plastic residues (chips) using a vacuum cleaner and then clean the air duct.



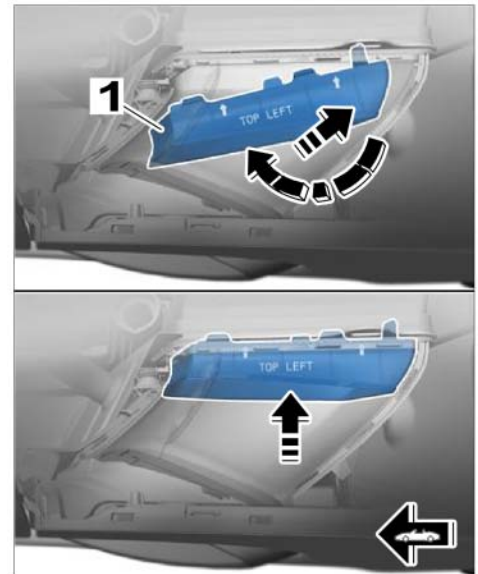
*Cleaning air duct*

- 2 Install new protective grilles (V04015800AA) at the **left and right**.
- 2.1 Guide protective grille ⇒ *Installing protective grille -1-* into the **center air duct** ⇒ *Installing protective grille -2-* on the left-hand side of the vehicle in such a way that the **TOP LEFT** marking on the protective grille is at the **top**. The **arrows** on the protective grille must be **pointing inwards**.



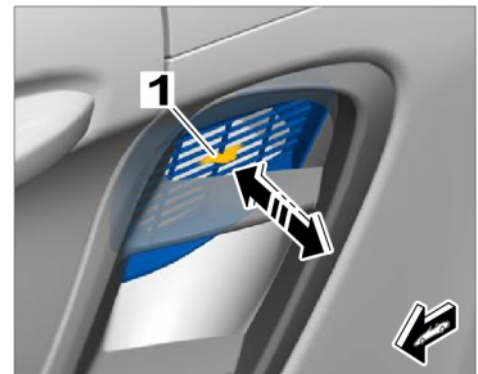
*Installing protective grille*

- 2.2 Position protective grille ⇒ *Positioning protective grille -1-* with the right edge in the air duct first and then press it as far as it will go into the air duct in the left area ⇒ *Positioning protective grille -Pfeile-*.
- 2.3 Press protective grille ⇒ *Positioning protective grille -1-* firmly into the air duct until the locking hooks engage securely with an audible click.



*Positioning protective grille*

- 2.4 Check that the protective grille ⇒ *Engaging protective grille -1-* is installed securely by pulling on it ⇒ *Engaging protective grille -Pfeile-*.
- 3 End of remedial action. Continue with Warranty processing and invoicing under **Scope 4.** ⇒ *Technical Information '700819 Warranty processing section'*
- 4 Enter the campaign in the Warranty and Maintenance booklet.



*Engaging protective grille*

**Warranty processing section**

Scope 1: **Retrofitting additional protective grilles for the air intakes**

- Vehicles from campaign WJ35 that have not **yet been retrofitted or open**
- 718 Boxster (982) / 718 Boxster S (982)

**Working time:**Retrofitting additional protective grilles for the air intakes Labor time: **106 TU**

Includes: Removing and installing trim panel for convertible top compartment/engine compartment lid  
 Removing and installing engine compartment lid  
 Removing and installing air-cleaner element  
 Cleaning air intakes on the left and right

**Required parts:**

V04015800AA	Protective grille set	1 unit
-------------	-----------------------	--------

⇒ **Damage code WMP7 066 000 1**

Scope 2:

**Retrofitting additional protective grilles for the air intakes**

- Vehicles from campaign WJ35 that have not **yet been retrofitted or open**
- 718 Cayman (982) / 718 Cayman S (982)

**Working time:**Retrofitting additional protective grilles for the air intakes Labor time: **124 TU**

Includes: Removing and installing trim panel for convertible top compartment/engine compartment lid  
 Removing and installing engine compartment lid  
 Removing and installing air-cleaner element  
 Cleaning air intakes on the left and right

**Required parts:**

V04015800AA	Protective grille set	1 unit
-------------	-----------------------	--------

⇒ **Damage code WMP7 066 000 1**

Scope 3:

**Replacing protective grilles for the air intakes**

- Vehicles that have already been retrofitted for the **first time during campaign WJ35**
- 718 Boxster (982) / 718 Boxster S (982)
- 718 Cayman (982) / 718 Cayman S (982)

**Working time:**Replacing protective grilles for the air intakes Labor time: **27 TU**

**Required parts:**

V04015800AA Protective grille set 1 unit

⇒ Damage code WMP7 066 000 2

Scope 4:

**Cut out protective grille (injected) and install new protective grille**

- Vehicles with protective grille already **injected in the air duct** (standard solution for After Sales measure campaign WJ35)
- 718 Boxster (982) / 718 Boxster S (982)
- 718 Cayman (982) / 718 Cayman S (982)

**Working time:**

Cut out protective grille (injected) and install new protective grille Labor time: **63 TU**

**Required parts:**

V04015800AA Protective grille set 1 unit

⇒ Damage code WMP7 066 000 2

**Important Notice:** Technical Bulletins issued by Porsche Cars North America, Inc. are intended only for use by professional automotive technicians who have attended Porsche service training courses. They are written to inform those technicians of conditions that may occur on some Porsche vehicles, or to provide information that could assist in the proper servicing of a vehicle. Porsche special tools may be necessary in order to perform certain operations identified in these bulletins. Use of tools and procedures other than those Porsche recommends in these bulletins may be detrimental to the safe operation of your vehicle, and may endanger the people working on it. Properly trained Porsche technicians have the equipment, tools, safety instructions, and know-how to do the job properly and safely. Part numbers listed in these bulletins are for reference only. The work procedures updated electronically in the Porsche PIWIS diagnostic and testing device take precedence and, in the event of a discrepancy, the work procedures in the PIWIS Tester are the ones that must be followed.

© 2022 Porsche Cars North America, Inc.