



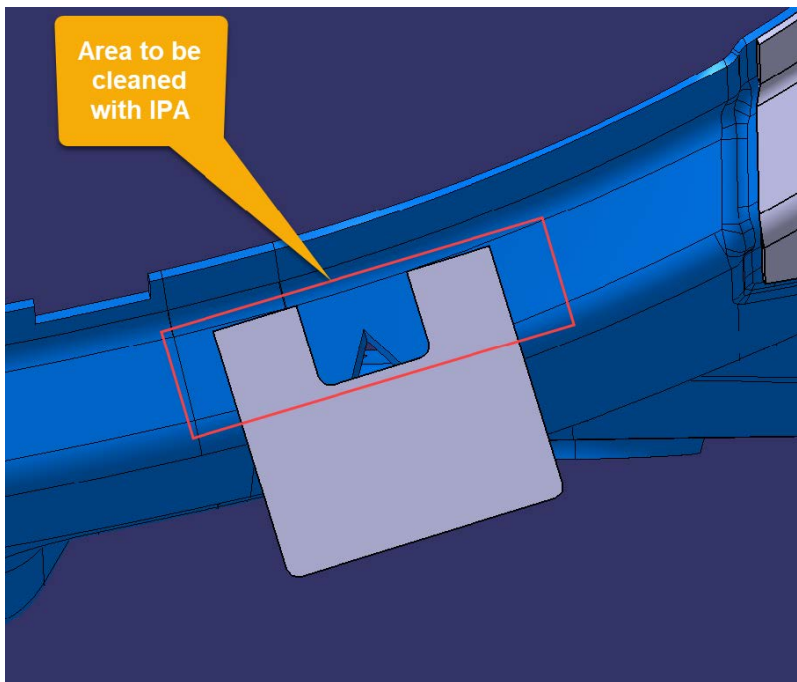
Volvo Chassis - Water leaking Around The Windshield - Model Year 2018 and Newer



> Internal Content

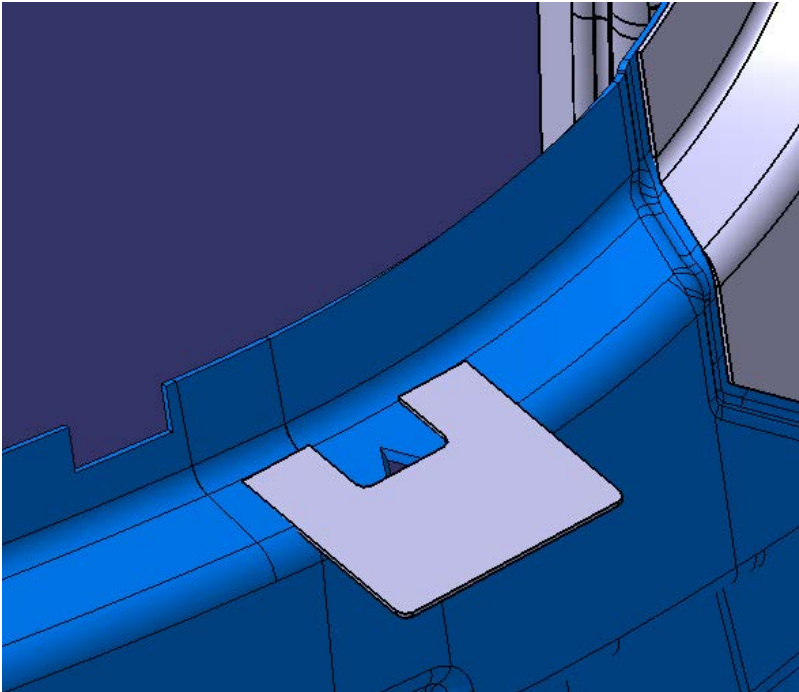
This CBR Solution describes the installation procedure for the rubber drain management flap.

Two flaps ([PN 78565353](#)) are required per vehicle, and they are to be positioned at the bird-beak drain features at the lower corners of the windshield opening. The bonding area on the BIW is to be cleaned with isopropyl alcohol prior to attaching the flaps.



Position one flap on each side of the windshield opening at bird-beak drain feature. Ensure that the adhesivebacked

tabs are positioned on the flat surface of the opening as shown and that the drain feature is centered between them. Apply pressure to ensure good adhesion.



Tags

[k10555782](#)

[volvo](#)

Related links and attachments

No links or attachments available



Feedback

[Give feedback](#)

to help improve the content of this article

Live UI