

TECHNICAL TOPICS

BODY/CHASSIS



Seat Mounted Seat Switches Not Working

18 - 22MY RR Velar, RR Evoque, RR Sport, Discovery, Discovery Sport, Defender, E-PACE, F-PACE, I-PACE, XE, XF

Customer Voice:

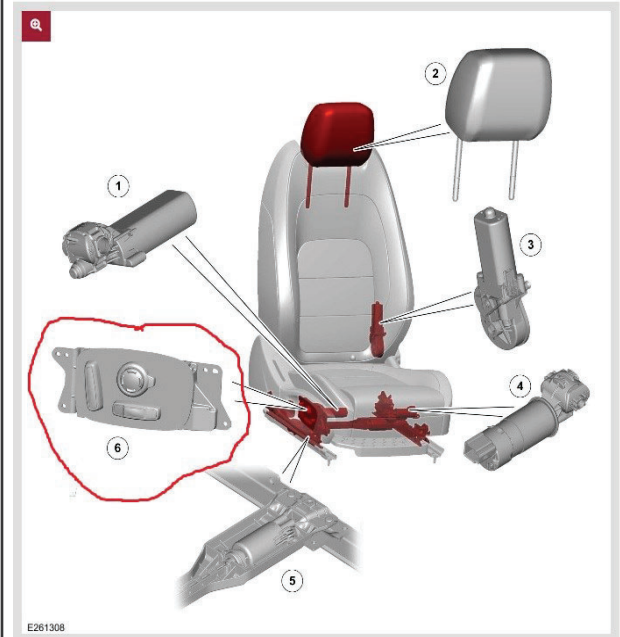
- A customer may report that one (or more) of the power seat adjustment features are not operating when the seat button is pressed.

Technical Description:

- A technician may find one of the following seat power adjustments inoperative: forward/ rearward, backrest incline/ recline, seat height up/ down, cushion length.

Status:

- Engineering is currently investigating concerns with seat switch pack performance. Returned parts to the supplier have found no fault with the switch pack.
- SSM 75620 (Land Rover) and 75619 (Jaguar) have been published to support the investigation of this concern, requesting a TA case be submitted **prior** to removing the seat switch pack for testing with the supporting data requested in the SSM.



E261308

