

# Technical Service Bulletin

---

**69 Front seat belt is stuck/binding when extended**  
**69 22 80 2065964/1 February 1, 2022.**

Model(s)	Year	VIN Range	Vehicle-Specific Equipment
A4, A4 allroad, and Q7	2017 – 2018	All	Not Applicable
S4, A5, A5 Cabriolet, A5 Sportback, S5, S5 Cabriolet, S5 Sportback, RS 5, Q5, and SQ5	2018	All	Not Applicable

## Condition

### Customer states:

- Front left and/or right seat belt is stuck/binding **after prior replacement or workshop visit.**

## Technical Background

The seat belt is installed on the wrong side.

## Production Solution

Not applicable.

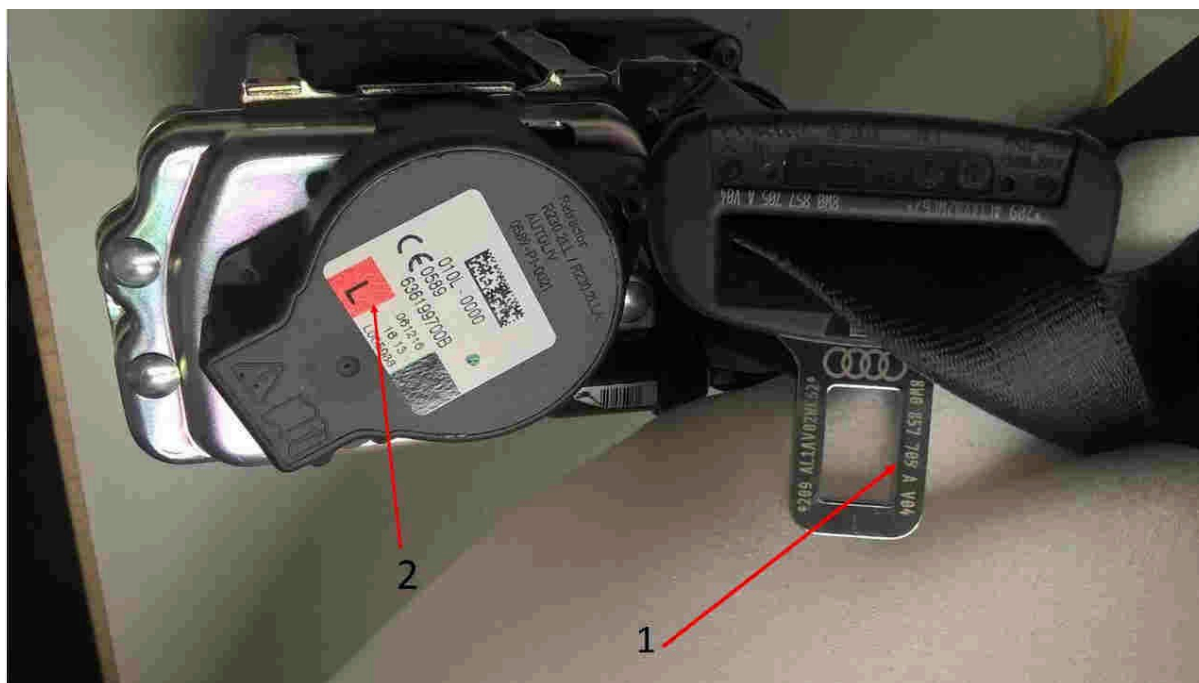
## Service

1. If the above complaint occurs after a workshop visit (e.g. to have a campaign performed), check whether the seat belt has been installed on the correct side (Figure 1).



# Technical Service Bulletin

---



**Figure 1.** Seat belt part number on latch plate and installation location identifier on belt retractor

2. Compare the part number on the seat belt latch plate with the information in ETKA to determine if the seat belt has been installed on the correct side (Figure 1, item -1-). If necessary, check the part label on the seat belt retractor. It indicates the installation location (Figure 1, item -2-). “L” indicates the left side (as seen in the direction of travel). “R” indicates the right side (passenger side).
3. If the seat belt has been installed on the wrong side, change it to the correct side as described in the Elsa Repair Manual.

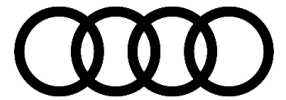
Parts replacement does not solve this issue. Claims for replaced parts will be subject to review.

## Warranty

This damage is due to outside influence and is not covered by any Audi Warranty.

## Additional Information

All part and service references provided in this TSB (2065964) are subject to change and/or removal. Always check with your Parts Department and/or ETKA for the latest information and parts bulletins. Please check the Repair Manual for fasteners, bolts, nuts, and screws that require replacement during the repair.



# Technical Service Bulletin

---

©2022 Audi of America, Inc. All rights reserved. The information contained in this document is based on the latest information available at the time of printing and is subject to the copyright and other intellectual property rights of Audi of America, Inc., its affiliated companies, and its licensors. All rights are reserved to make changes at any time without notice. No part of this document may be reproduced, stored in a retrieval system, or transmitted in any form or by any means, electronic, mechanical, photocopying, recording, or otherwise, nor may these materials be modified or reposted to other sites, without the prior expressed written permission of the publisher.