



Mitsubishi Motors Reports Strong Fourth Quarter, Full-Year Sales Success. Click the image above to read the January 4, 2022 article.

INSIDE THIS ISSUE:

TECHNICAL INFORMATION	1
PARTS INFORMATION	7
TAKATA RECALL STATS	9
TECHNICAL TRAINING	10
BEHIND THE SCENES	12
QUOTES	13
TSB/TIN/ATIN REVIEW	14
NEWS & NOTES	15

UPCOMING DATES TO REMEMBER:

Valentine's Day - February 14th

Presidents' Day - February 21st
(MMNA CLOSED)



Presidents' Day, officially Washington's Birthday, is a holiday in the United States celebrated on the third Monday of February to honor all persons who served in the office of president of the United States. The federal holiday specifically honors George Washington, who led the Continental Army to victory in the American Revolutionary War, presided at the Constitutional Convention of 1787, and was the first president of the United States.



All-New Mitsubishi Outlander Named SUV Of The Year In 'Latin Flavor Cars Of The Year 2021' Awards. Click the image above to read the January 19, 2022 article.

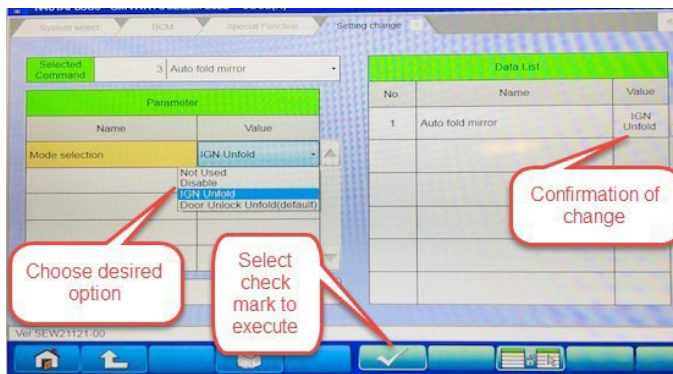
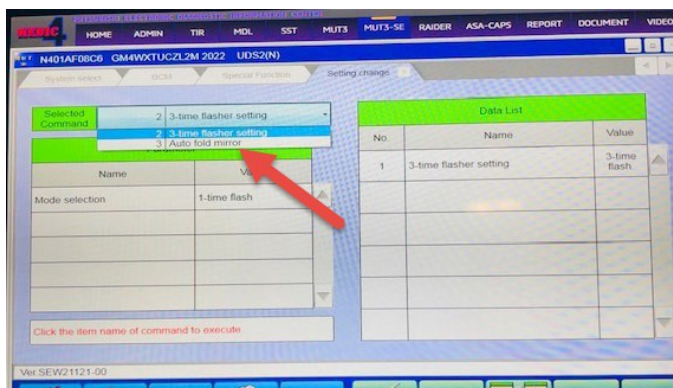
TECHNICAL INFORMATION

Folding Mirror Settings (available through MUT3SE) - Also see related TIN-22-54-001

During winter weather it may be desirable to change the Auto Folding Mirror to disabled. With Medic Update # 718 the option is now available for the 2022 Outlander.

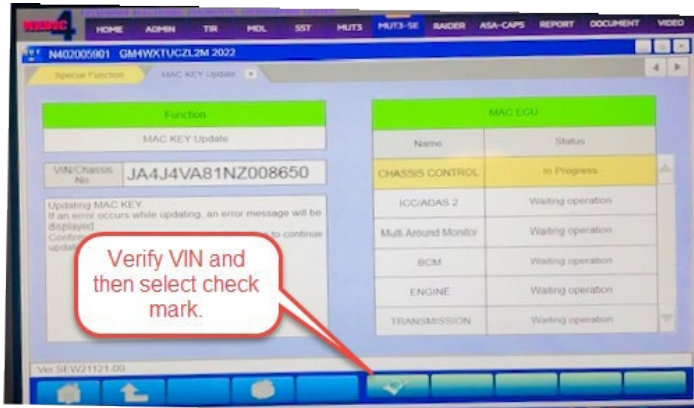
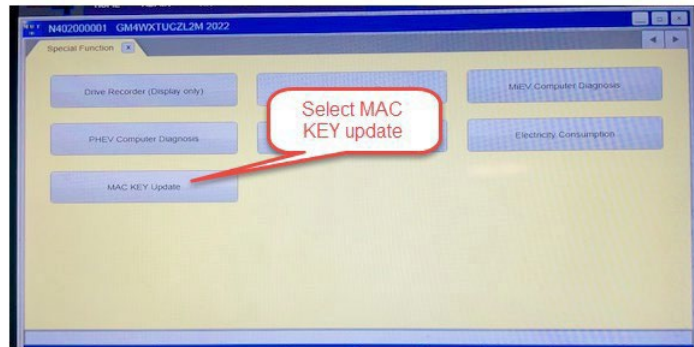
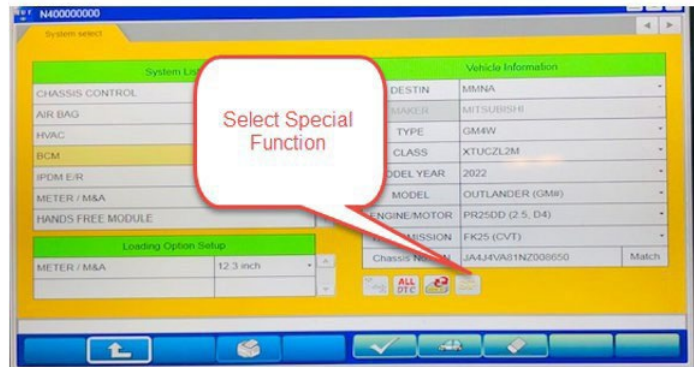
Procedure

- While in BCM>>Special Function>>Setting Change>>Select Command (Auto Fold Mirror)>>Value Change
 - Disabled (Mirror will not automatically fold/unfold)
 - Ignition Unfold (Mirror will unfold upon ignition and fold upon door lock)
 - Door Lock Unfold (Mirrors will fold/unfold upon door lock/unlock)



MAC Key Update for All Control Units – Also see related TIN-21-00-008

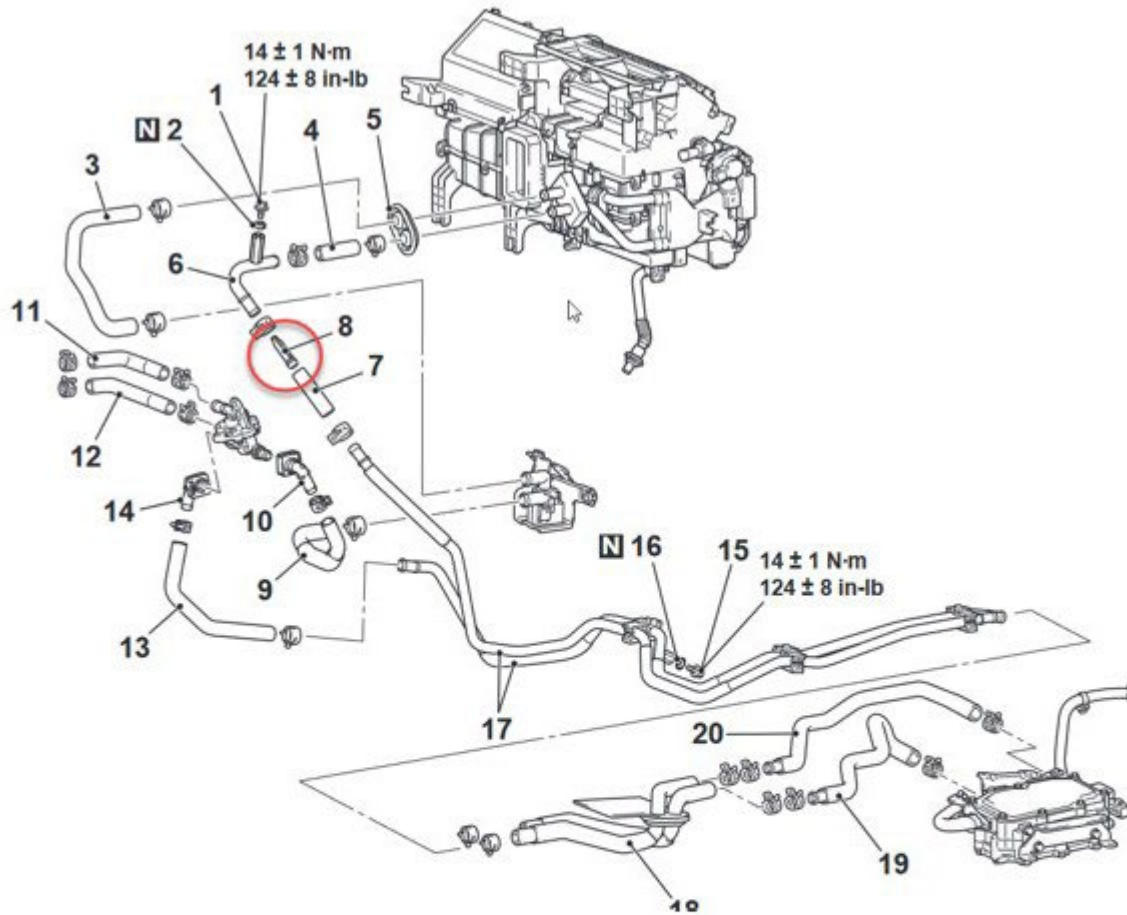
Whenever a control module is replaced such as ADAS control Module, ECM, TCM, CCM, or other ECU's, the new MAC address must be written. This can be done individually but, can also be done in all modules at the same time. To perform a "ALL Control Unit MAC KEY WRITE" follow the steps below:



Heater, Air Conditioning & Ventilation

MMNA has seen some PHEVs with a customer complaint of the vehicle heater system with diminished output of heat or no heat at all. Technicians are reporting that they are finding a substance that is clogging the inline filter (see diagram below/item #8 and photos). To resolve this issue, it has been reported that thoroughly cleaning the inline filter, flushing and refilling the cooling system according to the applicable service manual will rectify the condition.

Thanks to Matt Kasper @ South Suburban Mitsubishi for this information.



Mirage / Mirage G4 Alternator Belt Squeal – Part Returns

MMNA would like to ask all Dealer Service Personnel to be on the lookout for the following conditions on Mirage/Mirage G4 vehicles:

- Squealing/chirping noise coming from the Alternator Belt (Part #: 1340A146[MY19] or 11720W020P [MY20])
- Signs of wear-and-tear on the Alternator Belt (e.g., simply re-tensioning the belt would not be a long-term solution)
- Within warranty
- Vehicle Production Date of September 2019 or newer
- Between 18,000 and 50,000 miles
- No signs of aftermarket additions/alterations near the Alternator Belt

If you encounter a vehicle that matches the above conditions: please create a TechLine Case and contact the below MMNA associate before repairing the vehicle: **Name: Max Sweet**

Phone: 657-238-2889

Email: maxwell.sweet@na.mitsubishi-motors.com

MMNA is currently investigating this phenomenon in an Engineering Report and will be requesting the following:

- Video-evidence illustrating the noise coming from the Alternator Belt
- Tension values before and after repair (Service Manual Instructions below)
- Faulty part returned to the MMNA Tech Center

DRIVE BELT TENSION CHECK

M11110031A0032

Required Special Tools:

- MB992080: Belt Tension Meter Set
 - MB992081: Belt Tension Meter
 - MB992082: Microphone Assembly

CAUTION

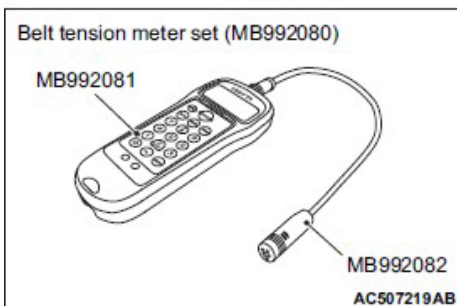
- When checking the drive belt tension, make sure that the engine is cold.
- Check the drive belt tension after turning the crankshaft clockwise one turn or more.

Check the drive belt tension in the following procedure.

Standard value:

ITEM	WHEN CHECKED	WHEN ADJUSTED	WHEN REPLACED
Vibration frequency Hz	145 – 169	153 – 169	187 – 196
Tension N (lb)	529 – 725 (118.9 – 163.0)	588 – 725 (132.2 – 163.0)	882 – 980 (198.3 – 220.3)
Deflection mm (inch) [Reference]	8.2 – 10.4 (0.32 – 0.41)	8.2 – 9.6 (0.32 – 0.38)	6.3 – 6.9 (0.25 – 0.27)

Belt tension meter set (MB992080)



<When the vibration frequency is measured: Recommendation>

1. Connect special tool microphone assembly (MB992082) to special tool belt tension meter (MB992081) of special tool belt tension meter set (MB992080).
2. Press the "POWER" button to turn on the power supply.
3. Press number key "1". Check to ensure that "No. 01" appears on the upper left of the display and that the following numeric values are displayed for individual items ("M", "W", and "S"):
M 000.9 g/m
W 010.0 mm/R
S 0100 mm

NOTE:

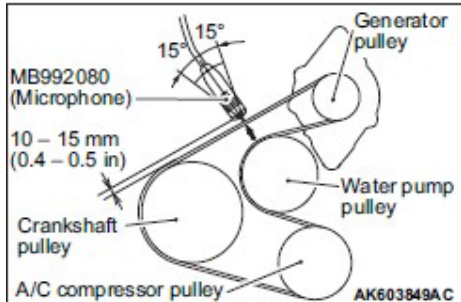
- If numeric values have not been entered (new tool), set them according to the belt specifications as shown below. Once you set them, you do not have to set them again. The settings remain undeleted even after battery replacement.
- This operation is to temporarily set the preset data such as the belt specifications, because if the measurement is taken without input of the belt specifications, conversion to tension value (N) cannot be made, resulting in judgment of error.

<Setting procedure>

- (1) Press down the "MASS" button till the belt mass select display appears.
 - (2) Press the "UP" or "DOWN" button to select "01 1.5GT 0.9" and press the "MEASURE" button to decide it. Check to ensure that "M 000.9 g/m" is displayed.
 - (3) Press the "WIDTH" button to change to the belt width input display.
 - (4) Press number keys "0", "1", "0", and "0" sequentially, and press the "SELECT" button to apply them. Check to ensure that "W 010.0 mm/R" appears on the display.
 - (5) Press the "SPAN" button to change to the span length input display.
 - (6) Press number keys "0", "1", "0", and "0" sequentially, and press the "SELECT" button to apply them. Check to ensure that "S 0100 mm" appears on the display.
4. Press "Hz" button twice to change the display to the frequency display (Hz).

CAUTION

- Do not let any contaminants such as water or oil get onto the microphone.
- If strong gusts of wind blow against the microphone or if there is loud sources of noise nearby, the values measured by the microphone may not correspond to actual values.
- If the microphone is touching the belt while the measurement is being made, the values measured by the microphone may not correspond to actual values.
- Do not take the measurement while the vehicle's engine is running.

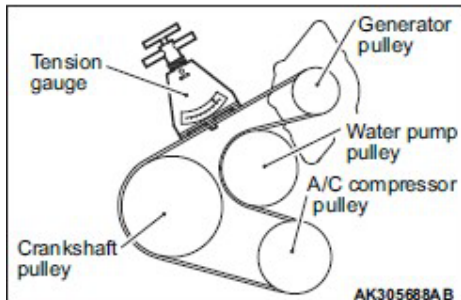


5. Hold special tool MB992080 to the middle of the drive belt between the pulleys (at the place indicated by arrow) where it does not contact the drive belt [approximately 10 – 15 mm (0.4 – 0.5 inch) away from the rear surface of the belt] so that it is perpendicular to the drive belt (within an angle of ± 15 degree angle).
6. Press the "MEASURE" button.
7. Gently tap the middle of the drive belt between the pulleys (the place indicated by the arrow) with your finger as shown in the illustration.
8. Check that the vibration frequency of the drive belt is within the standard value.
NOTE: To take the measurement repeatedly, flip the drive belt again.
9. After the completion of the measurement, press and hold the "POWER" button to turn off the power supply.

<When tension is measured>

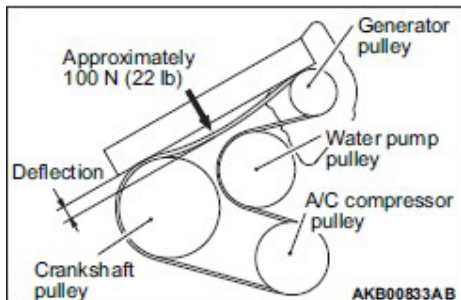
Use a belt tension gauge in the middle of the drive belt between the pulleys shown in the figure to check that the drive belt tension is within the standard value.

NOTE: Before inspection, remove the oil dipstick guide assembly (Refer to P.11A-53).



<When deflection is measured>

Apply approximately 100 N (22 pounds) of force to the middle of the drive belt between the pulleys (at the place indicated by the arrow) and check that the amount of deflection is within the standard value.



PARTS INFORMATION

Missing VINs for Mirage/G4 in ASA-CAPS and Solution (Parts Bulletin PB-MISC-21-MIR)

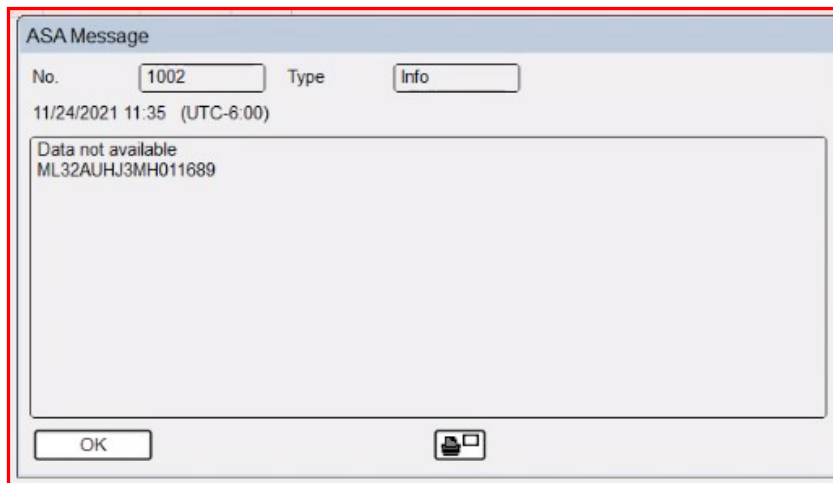
PURPOSE:

This Parts Bulletin is to inform our dealer partners of a small issue in ASA-CAPS where you may not be able to find a specific VIN for 2020 and 2021 Mirage and Mirage G4 models. Although the VINS are currently not in CAPS, the parts and information can still be found on ASA-CAPS for these models.

The Aftersales team anticipates this issue will be resolved shortly.

TEMPORARY SOLUTION:

When searching for appropriate VINS in ASA-CAPS for Mirage and Mirage G4 models, users may experience a pop-up in the application and web version which states the data or results cannot be found:



To resolve this issue, the following information can be input into the fields listed below to search for these vehicles:

- ❖ Model: A03A **(Example)**
- ❖ Classification: XTMHL2M **(Example)**
- ❖ Option code: A12 **(Example)**
- ❖ Exterior code: T69 **(Example)**
- ❖ Interior code: 07X **(Example)**
- ❖ Production Period: 2021081 **(Example)**

This information above can be found on the Superscreen via the MDL:

VIN	ML32AUHJ3MH011689	Model	2021 MIRAGE	Country of Origin	US
No Open Recalls					
Open Customer Promotions					
Op# / Note	Description				
77WC2101	NEW OWNER WELCOME OIL CHANGE ----- EXPIRATION: 05/31/2022				
Vehicle Information					
Selling Dealer	23073	GRAND BLANC MIT	Price Line	MG44 A	ES
Model Code	A03AXTMHL2M	Color Cd - Inter Cd	T69	SAPPHIRE BLUE	07X BLACK
Prod Date	08/07/2021	Calif/Federal	5		
In-Service Date	10/30/2021	Engine	3A92	1.2L DOHC 3CYL MIVEC	
Demo Date			Engine Number	UKL6070	
Original Customer			Sales Type	01	
Latest MMNA Known Customer			Transmission	CVT	Trans Model F1CJB
Address			Port of Entry	JAX	
Address2					
City	FLINT	Key Code	31251		
State/Province	MI	Zip/Postal Code	48506	Fleet	FOG A12

Please Note: The production period is rounded to the first or last day of the month depending on actual production date. In this case 8/7 rounded down to 8/1.

AFFECTED VEHICLES:

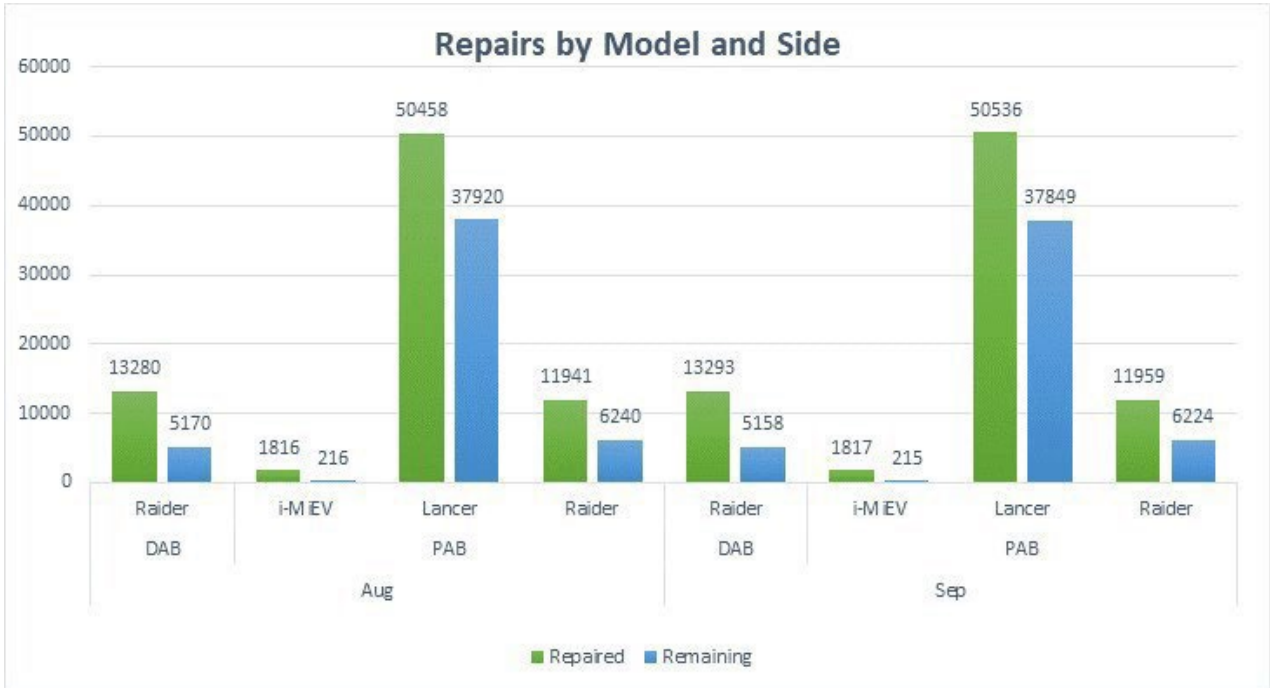
2020-2021 Mitsubishi Mirage and Mirage G4

ADDITIONAL INFORMATION:

Contact your local Zone Representative, District Parts and Service Manager, or Facing PDC for questions or comments.



TAKATA RECALL KEY STATISTICS



Month	DAB Remaining	PAB Remaining
December 2021	5,008	42,934
January 2022	4,977	42,802
Repaired	31	132

BELL ROAD MITSUBISHI
EASLEY MITSUBISHI

CONGRATULATIONS!



TECHNICAL TRAINING SCHEDULE: January, February, and March 2022

Please note: Always check MDL for schedule updates.

Atlanta Technical Training Center - Southeast Region 801 Interstate West Parkway, Lithia Spring, GA 30122 (770) 732-3000 ~ Nearest Airport: Atlanta (ATL)

January '22					February '22					March '22				
Monday	Tuesday	Wednesday	Thursday	Friday	Monday	Tuesday	Wednesday	Thursday	Friday	Monday	Tuesday	Wednesday	Thursday	Friday
3	4	5	6	7	31	1	2	3	4	28	1	2	3	4
						ADAS (ILT)	ADAS (ILT)	ADAS (ILT)	ADAS (ILT)		ER1	ER1	ER1	Office
10	11	12	13	14	7	8	9	10	11	7	8	9	10	11
	NM221TT (Virtual)	ER1 (ILT)	ER1 (ILT)	ER1 (ILT)							MED4	STV4	EL1	EL1
17	18	19	20	21	14	15	16	17	18	14	15	16	17	18
Holiday						EECS (ILT)	EECS (ILT)	EECS (ILT)	EECS (ILT)					
24	25	26	27	28	21	22	23	24	25	21	22	23	24	25
	EECS (ILT)	EECS (ILT)	EECS (ILT)	EECS (ILT)			PHEVTT (Virtual)	PHEVTT (Virtual)	NM221TT (Virtual)		CC1	CC1	CC1	CC1
31	1	2	3	4	28	1	2	3	4	28	29	30	31	1
	ADAS (ILT)	ADAS (ILT)	ADAS (ILT)	ADAS (ILT)		ER1 (ILT)	ER1 (ILT)	ER1 (ILT)			NM221TT	MTT2	MTT2	MTT2

Dallas Technical Training Center - Central/West Region (972) 401-5930 ~ Nearest Airport: Dallas-Fort Worth (DFW)

January '22					February '22					March '22				
Monday	Tuesday	Wednesday	Thursday	Friday	Monday	Tuesday	Wednesday	Thursday	Friday	Monday	Tuesday	Wednesday	Thursday	Friday
3	4	5	6	7	31	1	2	3	4	28	1	2	3	4
	MED4 (Virtual)	STV4 (Virtual)	EL1 (Virtual)	EL1 (Virtual)										
10	11	12	13	14	7	8	9	10	11	7	8	9	10	11
						ADAS (ILT)	ADAS (ILT)	ADAS (ILT)	ADAS (ILT)		CC1	CC1	CC1	CC1
17	18	19	20	21	14	15	16	17	18	14	15	16	17	18
Holiday		MTT2 (ILT)	MTT2 (ILT)	MTT2 (ILT)		MTT2 (ILT)	MTT2 (ILT)	MTT2 (ILT)	NM221TT (Virtual)		ADAS (ILT)	ADAS (ILT)	NM221TT	NM221TT
24	25	26	27	28	21	22	23	24	25	21	22	23	24	25
	ADAS (ILT)	ADAS (ILT)	PHEVTT (Virtual)	PHEVTT (Virtual)		MED4 (Virtual)	STV4 (Virtual)	EL1 (Virtual)	EL1 (Virtual)					
31	1	2	3	4	28	1	2	3	4	28	29	30	31	1
											MED4	STV4	EL1	EL1

Course Title	Days	Code	Prerequisites
Engine & Emission Control Systems (ILT)	4	EECS	ES1W, EL1, STV4, MED4, ME3W
Engine Repair (ILT)	3	ER1	ES1W, EL1, STV4, MED4, ME3W
Climate Control (ILT)	2	CC1	ES1W, EL1, STV4, MED4, ME3W
Manual Transaxles & Transfer Cases (ILT)	3	MTT2	ES1W, EL1, STV4, MED4, ME3W
Plug-In Hybrid Electric Vehicle (Virtual)	2	PHEVTT	ES1W, EL1, STV4, MED4, ME3W, PHEVW, R1234W
MEDIC4 (Virtual)	1	MED4	ME3W
STV4 (Virtual)	1	STV4	No Prerequisites
Electrical Systems 1 (Virtual)	2	EL1	ES1W
Advanced Driver Assistance Systems (ILT)	2	ADAS21TT	ES1W, EL1, STV4, MED4, ME3W
New Model Training 2022 Outlander (Virtual)	1	NM221TT	NM221W

TECHNICAL TRAINING SCHEDULE (Continued)

New Jersey Technical Training Center - Northeast Region

516 Heron Drive, Swedesboro, NJ 08085

(856) 467-7100 ~ Nearest Airport: Philadelphia (PHL)

January '22					February '22					March '22				
Monday	Tuesday	Wednesday	Thursday	Friday	Monday	Tuesday	Wednesday	Thursday	Friday	Monday	Tuesday	Wednesday	Thursday	Friday
3	4	5	6	7	31	1	2	3	4	28	1	2	3	4
	ADAS (ILT)	ADAS (ILT)	ADAS (ILT)	ADAS (ILT)		ER1 (ILT)	ER1 (ILT)	ER1 (ILT)	NM221TT (Virtual)		MTT2	MTT2	MTT2	Office
10	11	12	13	14	7	8	9	10	11	7	8	9	10	11
	EECS (ILT)	EECS (ILT)	EECS (ILT)	EECS (ILT)		MED4 (Virtual)	STV4 (Virtual)	EL1 (Virtual)	EL1 (Virtual)					
17	18	19	20	21	14	15	16	17	18	14	15	16	17	18
Holiday		NM221TT (Virtual)	ADAS (ILT)	ADAS (ILT)							EECS	EECS	EECS	EECS
24	25	26	27	28	21	22	23	24	25	21	22	23	24	25
											ADAS	ADAS	PHEVTT	PHEVTT
31	1	2	3	4	28	1	2	3	4	28	29	30	31	1
	ER1 (ILT)	ER1 (ILT)	ER1 (ILT)	NM221TT (Virtual)		MTT2 (ILT)	MTT2 (ILT)	MTT2 (ILT)						

Course Title	Days	Code	Prerequisites
Engine & Emission Control Systems (ILT)	4	EECS	ES1W, EL1, STV4, MED4, ME3W
Engine Repair (ILT)	3	ER1	ES1W, EL1, STV4, MED4, ME3W
Climate Control (ILT)	2	CC1	ES1W, EL1, STV4, MED4, ME3W
Manual Transaxles & Transfer Cases (ILT)	3	MTT2	ES1W, EL1, STV4, MED4, ME3W
Plug-In Hybrid Electric Vehicle (Virtual)	2	PHEVTT	ES1W, EL1, STV4, MED4, ME3W, PHEVW, R1234W
MEDIC4 (Virtual)	1	MED4	ME3W
STV4 (Virtual)	1	STV4	No Prerequisites
Electrical Systems 1 (Virtual)	2	EL1	ES1W
Advanced Driver Assistance Systems (ILT)	2	ADAS21TT	ES1W, EL1, STV4, MED4, ME3W
New Model Training 2022 Outlander (Virtual)	1	NM221TT	NM221W



BEHIND THE SCENES SPOTLIGHT

Our Behind the Scenes Spotlight is on **Sean Adams, Technical Compliance Specialist**, who shared the following:

I am a proud veteran of the United States Army, serving 16 years total between active duty and reserves. Originally from New Orleans, LA, my wife and I moved to the Nashville area with our three sons (ages 27, 23, and 13) in 2005. We have spent many of our years here serving the community in various ways such as mentoring programs, college prep, coaching sports, and many other activities. My career in the automotive industry began in 2013 as a Buyer with Nissan and then KASAI North America as a Program Manager. I joined the Mitsubishi family in March of 2020. On the first day of my second week the CEO came into the office asked everyone to "go home until further notice" and I have been working from home since. This was the beginning of the pandemic. As the Technical Compliance Specialist, my job is very challenging yet exciting because every day is different.

My passion is spending time with my wife and my girlfriend. By girlfriend, I mean my Harley Davidson. I love taking long trips and enjoying the great scenery we have in this country. Whenever I am off work and it is warm enough, you will see me out on the highway someplace. One of my new hobbies is mixology.



Sean's favorite quote: "Success is not final; failure is not fatal: it is the courage to continue that counts." — **Winston S. Churchill**



QUOTES

Seth Godin: "You are not your resume; you are your work."

Frank Sinatra: "The best revenge is massive success."

MMNA WOULD LIKE TO HEAR FROM YOU

If you have any technical information to share or an idea, please let us know! Send an email to: Servicesupport@mmsa.com. Be sure to include: Your name, title, and dealer name.





TSB/TIN/ATIN REVIEW

Since Tech Talk 265, the following bulletins have been published:

PUBLISH DATE	TSB/ATIN/TIN #	SUBJECT	MODELS
12/22/2021	TSB-21-42A-011	MODIFIED HOOD FOR HOOD FLUTTER	2022 OUTLANDER
1/7/2022	TSB-22-13-001	CHECK ENGINE LIGHT ILLUMINATES OR ENGINE MALFUNCTION POWER REDUCED SERVICE NOW WARNING MESSAGE APPEARS WHILE IDLING OR DRIVING	2022 OUTLANDER
1/7/2022	TIN-21-SR-007D	SEAT BELT AUTOMATIC LOCKING RETRACTOR (ALR) SAFETY RECALL CAMPAIGN	CERTAIN 2022 OUTLANDER
1/11/2022	TIN-22-54-001	FOLDING MIRROR SETTINGS	2022 OUTLANDER
1/14/2022	TIN-22-42A-001	TSB-21-42A-011 MODIFIED HOOD FOR HOOD FLUTTER	2022 OUTLANDER
1/19/2022	TIN-22-00-001	ELECTRICAL INSULATED GLOVES	2012-2017 iMiEV, 2018 AND NEWER OUTLANDER PHEV
1/21/2022	TIN-22-00-002	SOUTH CAROLINA DEPARTMENT OF PUBLIC SAFETY LETTERHEAD - TAKATA RECALLS	2004-2007 LANCER, 2006-2009 RAIDER, AND 2012-2017 iMiEV
	TIN-22-16-001	ENGINE CRANK / NO START IN EXTREME COLD	2022 OUTLANDER
	TIN-22-54-002	ODOMETER CALIBRATION AFTER INSTRUMENT CLUSTER / METER REPLACEMENT	2022 OUTLANDER
1/24/2022	SR-21-007REV3	SEAT BELT AUTOMATIC LOCKING RETRACTOR (ALR) - SAFETY RECALL CAMPAIGN - REVISION	2022 OUTLANDER
1/31/2022	TSB-22-52A-001REV	NOISE FROM FRONT SEAT BACK - REVISED	ALL OUTLANDER, ALL OUTLANDER PHEV, 2011-2012 AND 2016-2022 OUTLANDER SPORT / RVR
	TSB-22-00-001	LOAD CARRYING CAPACITY REDUCED LABEL	ALL VEHICLES

IMPORTANT

Affected new or used vehicle inventory must be repaired before the vehicle is sold or delivered. Dealers must check their vehicle inventory VINs on the Warranty Superscreen to verify whether the vehicle is involved in a recall campaign.

It is a violation of Federal Law for a dealer to sell or deliver a new motor vehicle or any new / used motor vehicle equipment (including a tire) covered by the notification under a sale or lease until the defect or non-compliance is remedied.



NEWS & NOTES

Mitsubishi Motors: Driving Ambition for 40 Years in the United States

FRANKLIN, Tenn. – Mitsubishi Motors North America, Inc. (MMNA) celebrates its 40th anniversary in the United States. From operations initially based in Fountain Valley, Calif.; then in Cypress, Calif., for more than 30 years; and now based in Franklin, Tenn.; MMNA marks today as a day to look back on a unique history, and a day to look forward to many more years in the U.S. For its 40th anniversary year, the company has planned special Anniversary Editions of its top-selling Outlander which will combine special features and badging and offer a special value.

As the company looks forward to the next 40 years in the U.S. and beyond, momentum is already building behind MMNA, with its brand-new North American headquarters opening, an all-new or significantly refreshed lineup of vehicles for the 2022 model year highlighted by the 2022 Mitsubishi Outlander, a robust and growing dealer partner network and **record-breaking sales success**.

"Over 40 years, Mitsubishi Motors has grown from a startup import brand to become a household name. We have delivered some of the U.S. auto industry's most iconic models, we've used music as the through-line for memorable advertising, we've reinvented the way families interact with their vehicles, we've grown into a proud and successful, challenger automotive brand loved by many," said Yoichi Yokozawa, Mitsubishi Motors North America President and CEO. "In the next 40 years, we will continue to challenge, we will continue to innovate, we will continue to deliver on the expectations of our extremely loyal owner and enthusiast community, and we will surprise and excite a new generation of Mitsubishi Motors customers."

Mitsubishi Motors had actually been selling vehicles in the U.S. prior to 1981, but not under its own company name. Because of a partnership with Chrysler Corporation, the company's cars had been sold with Dodge branding on them. But in 1981, the company created a formal presence for itself, as Mitsubishi Motor Sales of America, headquartered in Fountain Valley, Calif., and with vehicles sold through an initial dealer network of 70 facilities across the country.

In 1986, the company moved its headquarters to an all-new green-field location in the then farming community of Cypress, Calif. The multi-acre site housed all sales, marketing, planning and logistic operations; as well as design; research and development; parts operations and regional operations.

The next major move for MMNA was part of a brand-wide reinvention, and saw the company **relocate from Cypress, Calif. to Franklin, Tenn.**, just outside of Nashville, in mid-2019. In April 2020, its new-from-the-ground-up, state-of-the-art North American headquarters opened, and in spite of the pandemic, Mitsubishi hired more than 150 new team members. Throughout the pandemic, MMNA has supported its new hometown through employee volunteering and **corporate social responsibility, "Small Batch – Big Impact" programs**. MMNA expects to invite its new community and employee family to formally cut the ribbon on the new building in early 2022. By the time of the move, the company had sold nearly 5.5 million vehicles in the U.S., through its nearly 330 dealer partners around the country.

The newest Mitsubishi Motors dealership to open in the 40th anniversary year will be Cool Springs Mitsubishi, located just two miles from the company's U.S. headquarters office. Designed to the MMNA's newest Visual Identity (VI) program, which delivers a modern, clean and inviting sales facility, Cool Springs Mitsubishi is one of more than 20 dealerships that have opened or re-opened under the program since its inception. It is also the 42nd new dealership to open since MMNA made the move to Tennessee. The new headquarters, new, energetic employee team and new dealership are proof-positive of MMNA's commitment to its new hometown.

Outside of Tennessee, MMNA's momentum can be felt in its all-new or significantly revised lineup of vehicles, namely, its all-new flagship, the 2022 Mitsubishi Outlander – the most connected and best-equipped vehicle Mitsubishi has ever sold in the U.S.

A gamechanger for the brand, the 2022 Outlander launched on the world's largest e-commerce platform – Amazon – in Feb. 2021, and since then, has earned awards and smashed sales records for its nameplate and for MMNA dealer partners. Reflecting the quality, dependability and reliability the brand has built its reputation on over the last 40 years, the Outlander was recently tested and proven in the **2021 Rebelle Rally**.

The 2022 Eclipse Cross also saw a complete re-design, and new styling and standard safety and connectivity features were added across the lineup for 2021 and 2022, demonstrating further investment in the U.S. market. In the second-half of 2022, MMNA will launch the **plug-in hybrid electric vehicle (PHEV) model of the all-new Outlander**, bringing together the company's expertise in electrification and rally-derived, all-wheel control technologies.

From its inception to today's MMNA, the company has always held close one ideal: to design, engineer and market vehicles that offer outstanding value, class-above safety, leading-edge design and deliver pride of ownership. The past 40 years have seen vast changes in consumer preferences and tastes, and have seen MMNA rise and fall, and rise again. The company is poised for another 40 years of turning heads and driving excitement with a passionate employee and dealer partner team, committed CSR programs that give back to the community and award-winning vehicles that exceed customers' expectations.

"We've driven ambition for 40 years in the United States," added Yokozawa. "We can't wait to see what the next 40 will bring."

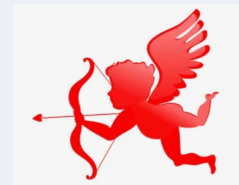


Headquarter News

Due to COVID statistics, we will not begin our return to the office before March 2022, and it may extend further.

Middle Tennessee Weather...

We don't always get snow, but when we do it is beautiful!



In Roman mythology, Cupid is the son of Venus, the goddess of love and beauty. And he is known as the god of affection. Legend has it that Cupid shoots magical gold-tipped arrows at gods and humans alike. By piercing their heart with an arrow, he causes individuals to fall deeply in love.

Some legends also say that Cupid is known to change his mind a lot. Not only does he carry golden arrows to make someone fall in love, but he also carries another kind of arrow. This other arrow has a blunt lead tip that makes people fall out of love.

