

Classification:

EC13-015J

Reference:

ITB13-044J

Date:

February 7, 2022

EVAP LEAK DTC P0442, P0455, P0456 INFORMATION

This bulletin has been amended. See **AMENDMENT HISTORY** on the last page.
Please discard previous versions of this bulletin.

APPLIED VEHICLES: All 2012 and newer Infiniti vehicles

SERVICE INFORMATION

All **APPLIED VEHICLES** have a warning indicator in the instrument area to alert the driver of a loose fuel filler cap (see Figure 1 example).

- If a vehicle displays a loose fuel filler cap warning light or message, the driver should safely stop the vehicle and make sure the fuel filler cap is installed correctly.
- **Make sure the client is informed of the proper fuel filler cap installation.**
- Clients should refer to their vehicle Owner's Manual for specific details on the "LOOSE FUEL CAP" warning system and fuel filler cap installation.

Example

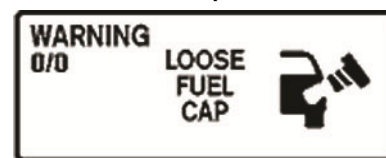


Figure 1

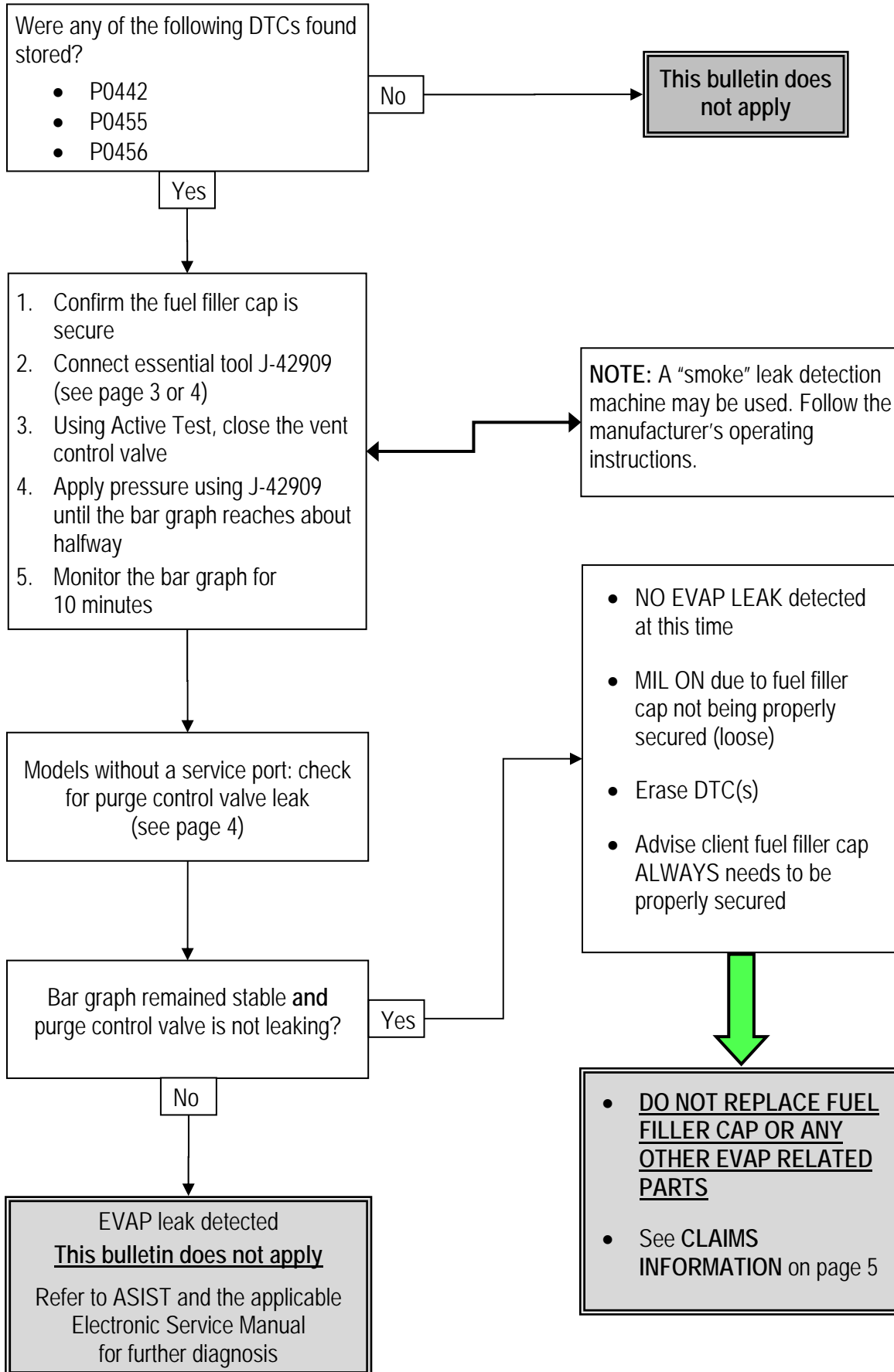
If a fuel filler cap is left loose for multiple trips, DTCs will be stored and the MIL will illuminate.

- A loose fuel filler cap may be the cause if one or more of these EVAP leak DTCs are stored: **P0442, P0455, P0456**.
- If P0442, P0455, and/or P0456 is found stored, begin vehicle EVAP system diagnosis using the **FLOW CHART** on the next page.
 - A test drive is not part of the DTC confirmation or diagnostic procedures for these DTCs.
 - Test-driving the vehicle for these DTCs will only waste time.
 - The diagnostic procedure in this bulletin must be used for these DTCs for an effective repair.

NOTE: Any parts replaced under warranty for repair of these DTCs are on automatic parts return to NNA for inspection. Any part found to be functional will cause a charge-back to the retailer.

Infiniti Bulletins are intended for use by qualified technicians, not 'do-it-yourselfers'. Qualified technicians are properly trained individuals who have the equipment, tools, safety instruction, and know-how to do a job properly and safely. **NOTE:** If you believe that a described condition may apply to a particular vehicle, DO NOT assume that it does. See your Infiniti retailer to determine if this applies to your vehicle.

FLOW CHART



Models with a Service Port
(2017 and older, except QX30)

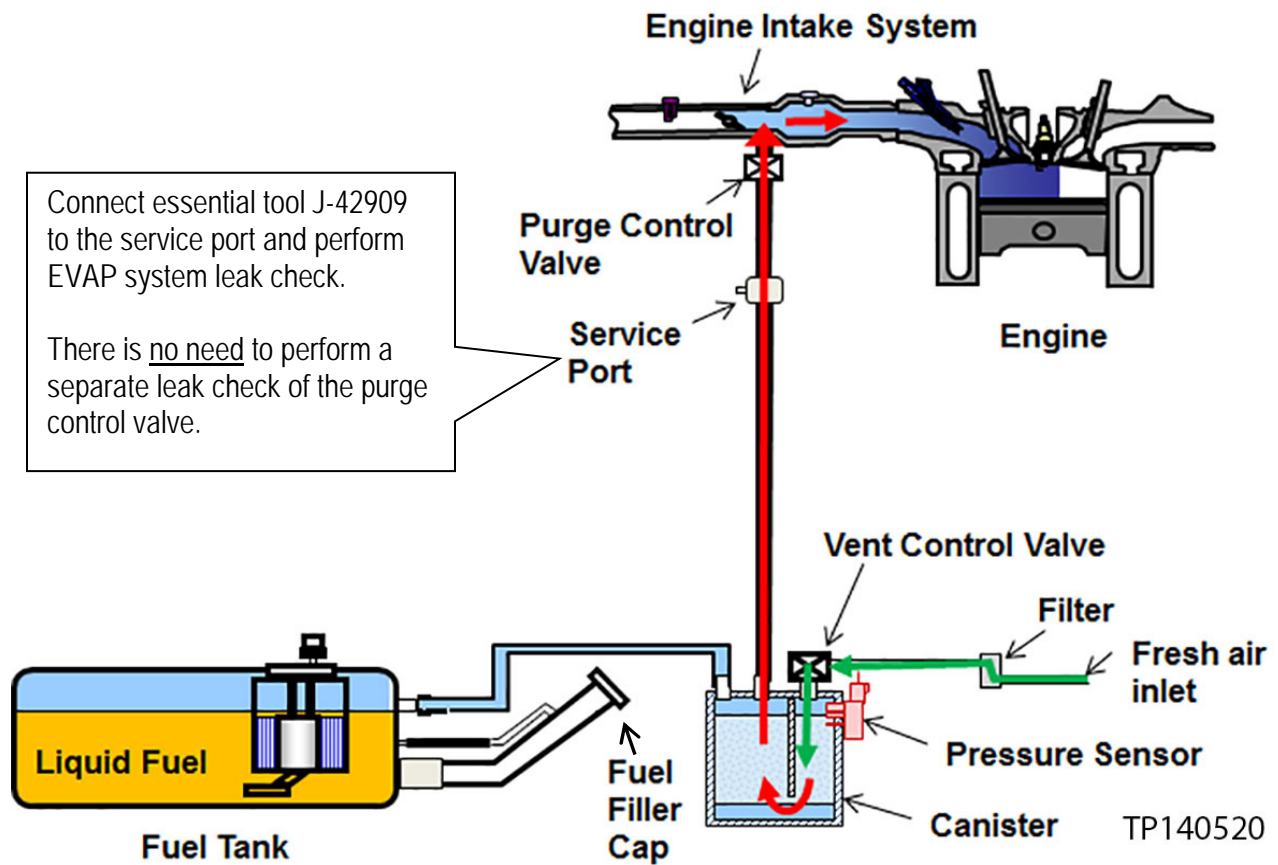


Figure 2

EVAP System Basic Operation

- Fuel vapor flows from fuel tank into canister (light blue area)
- Vapor flows from canister through purge control valve (red line)
- Fresh air flows into canister (green line)

Models without a Service Port
(2018 and Newer, and all QX30)

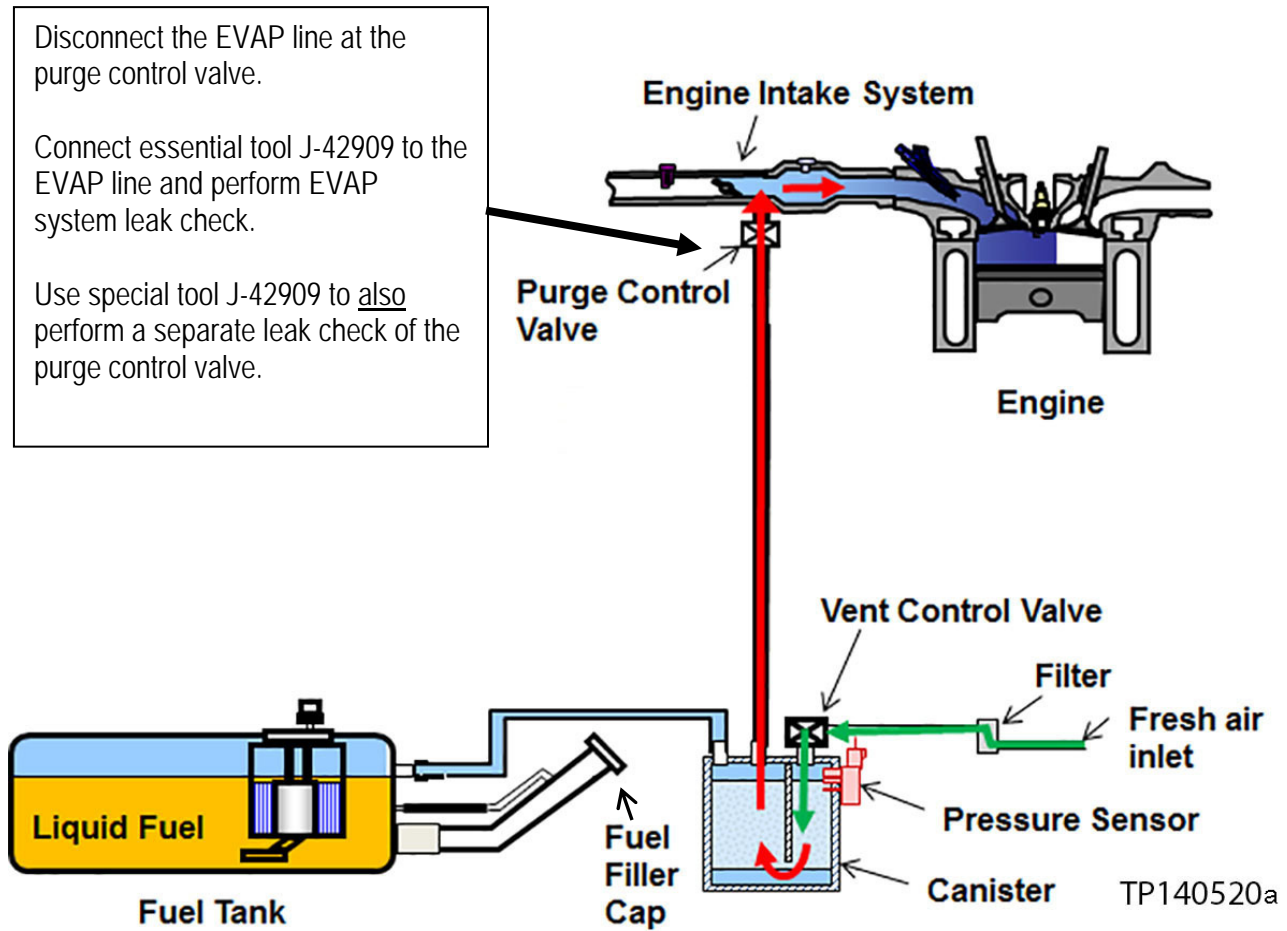


Figure 3

EVAP System Basic Operation

- Fuel vapor flows from fuel tank into canister (light blue area)
- Vapor flows from canister through purge control valve (red line)
- Fresh air flows into canister (green line)

CLAIMS INFORMATION

Submit a Primary Part (PP) type line claim using the following claims coding:

DESCRIPTION	PFP	OP CODE	SYM	DIA	FRT
EVAP System Leak Test	(1)	FX47AA	ZE	32	0.4

(1) Refer to the electronic parts catalog and use the Fuel Cap part number (17251-xxxxx) as the primary failed part.

AMENDMENT HISTORY

DATE	REFERENCE	DESCRIPTION
November 15, 2013	ITB13-044	Original bulletin published
September 16, 2014	ITB13-044A	SERVICE INFORMATION and CLAIMS INFORMATION revised, and publication date updated to include the latest models and model years
May 29, 2015	ITB13-044B	Publication date updated to include the latest models and model years
February 4, 2016	ITB13-044C	SERVICE INFORMATION and FLOW CHART revised, and publication date updated to include the latest models and model years
August 4, 2016	ITB13-044D	Publication date updated to include the latest models and model years
March 30, 2017	ITB13-044E	Publication date updated to include the latest models and model years
August 15, 2018	ITB13-044F	SERVICE PROCEDURE revised, and publication date updated to include the latest models and model years
January 29, 2019	ITB13-044G	Publication date updated to include the latest models and model years
November 30, 2020	ITB13-044H	Publication date updated to include the latest models and model years
March 1, 2021	ITB13-044I	Publication date updated to include the latest models and model years
February 7, 2022	ITB13-044J	Publication date updated to include the latest models and model years