



## **TECH TIP**

**ENGINE RELATED HINO COMPONENTS FOR  
THE 2022-2023 MODEL YEAR L SERIES TRUCKS  
EQUIPPED WITH A CUMMINS ENGINE**

**GROUP: 0-GENERAL  
TECH TIP NO: TT-22-006  
DATE: 3-18-2022**

# SUBJECT: Engine Related Hino Components for the 2022-2023 Model Year L Series Trucks Equipped with a Cummins Engine

## OVERVIEW


With the introduction of the Cummins engine in the new Hino L Series trucks, certain engine related components provided and installed by Hino will be covered by Hino Warranty. All engine related components supplied by or installed on the Cummins engine will be covered by the Cummins Warranty. Following is a list of engine related components provided and installed by Hino that will be covered by Hino Warranty in the event of a failure due to material defect or workmanship.

## Hino 2022-2023 Model Year L - Series Truck Engine Components Overview:

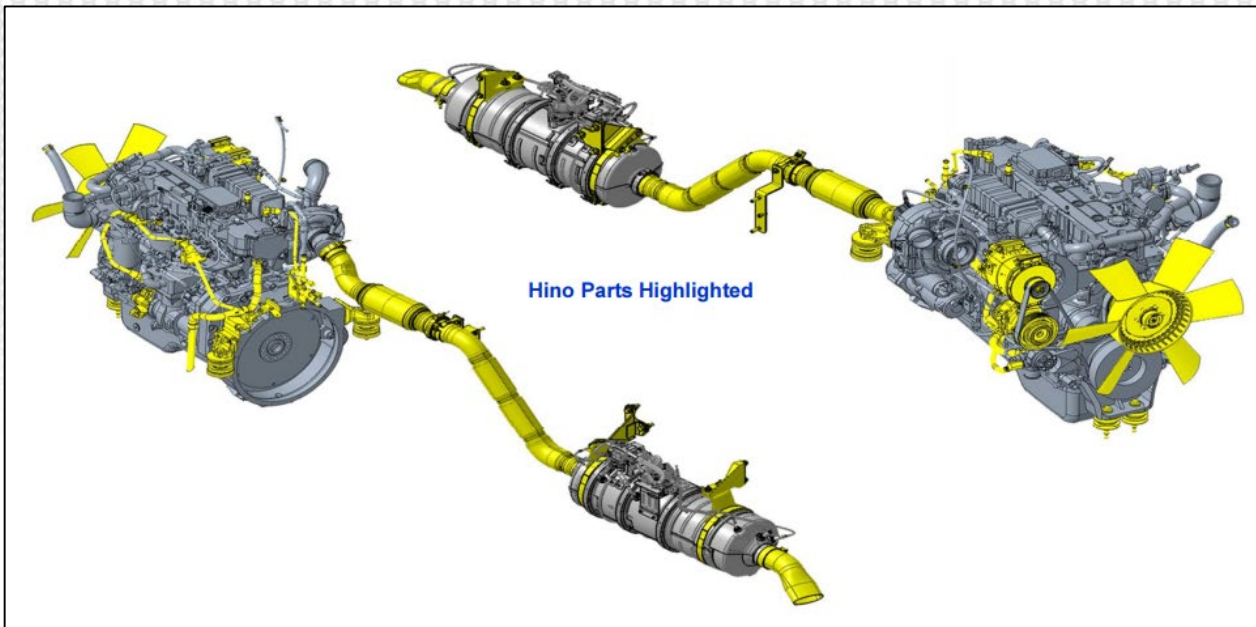
Current Components as per CEB00407

**OEM Components for Emissions Warranty**

- **Air Handling System and Associated Plumbing**
  - Ambient Air Temperature Sensor
  - Charge Air Cooler
  - Charge Air Cooler plumbing
- **Compressor Air System and Associated Plumbing**
  - HC Doser Pressure Regulator/Protection Valve
  - Plumbing from the HC Doser Pressure Regulator/Protection Valve to the HC Doser
- **Engine Electronic Components**
  - Wire harness circuits connected at both ends to emissions non-removable components
- **Exhaust System (upstream of last Aftertreatment)**
  - Exhaust gas piping from turbocharger out to the last after-treatment device
- **Exhaust Aftertreatment**
  - Urea Quality Sensor
  - Urea level sensor
  - Urea Tank and lines
  - Urea Tank/line heating elements or heat exchanger and pipe
  - Urea temperature sensors
  - Tank Heater Coolant Control Valve
  - Line Heater Control Relay
- **Vehicle Electronic Components**
  - On Board Diagnostic (OBD) Malfunction Indicator Lamp (MIL)
  - Diesel Exhaust Fluid (DEF) Lamp
  - OBD Connector



Sr Nos	Additional OEM Component List
1	Accelerator Pedal or Lever Position Sensor
2	Air Filter
3	Batteries
4	Battery Cables and Connections
5	Coolant Level Sensor
6	Fan Clutch
7	Fan Speed Sensor
8	Fuse
9	OEM Component
10	OEM Terminating Resistor
11	Radiator
12	Radiator Hoses
13	Radiator Pressure Cap
14	Remote Throttle
15	Vehicle Speed Sensor



Hino Parts Highlighted

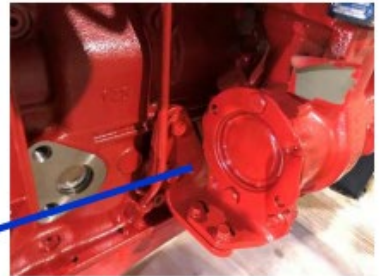
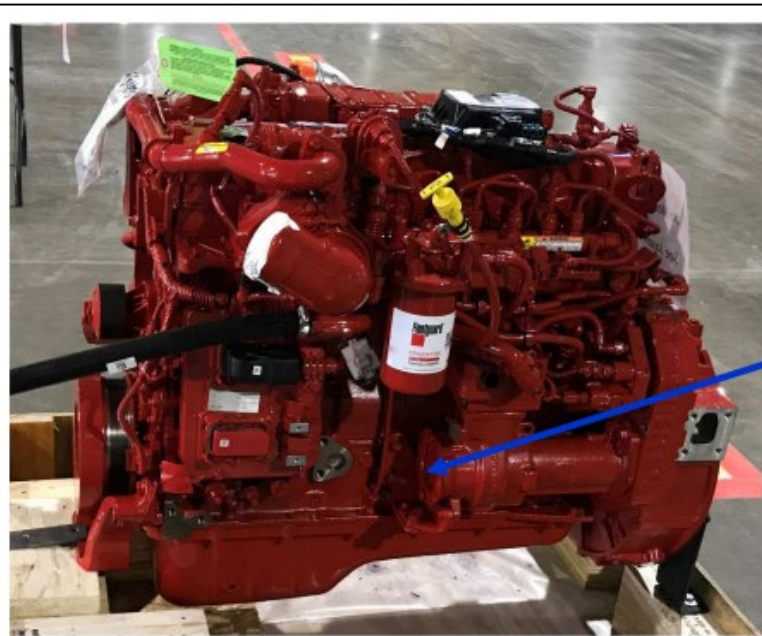


Alternator – Borg warner, Supplied by Hino  
A/C Comp – Denso, Supplied by Hino  
MAF Sensor calibrated to engine, Cummins, installed by Hino.

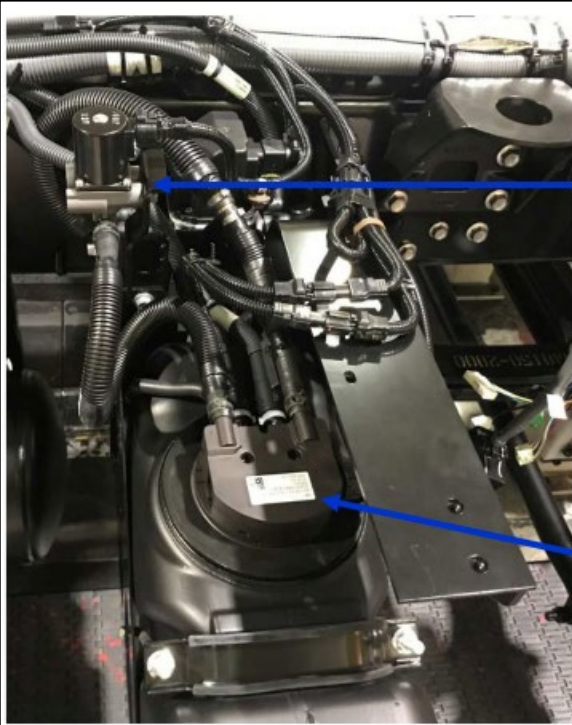




- Starter: Borg Warner / Delco Remy supplied by Hino



P/S Pump TRW, supplied by Hino, mounts on this location



**Water Valve  
supplied by Hino**



**DEF Sender  
supplied by Hino**



**Air Cleaner  
supplied by Hino**

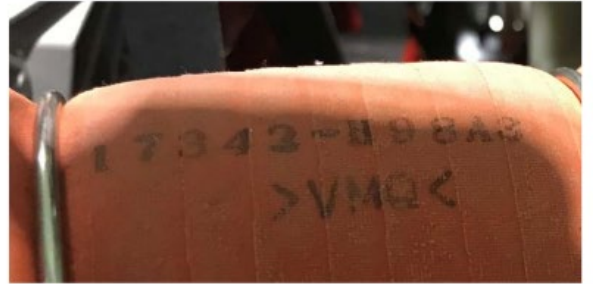


**Intake Air Pipe  
supplied by Hino**





CAC Inlet hoses, supplied by Hino



CAC Outlet Hoses supplied by Hino

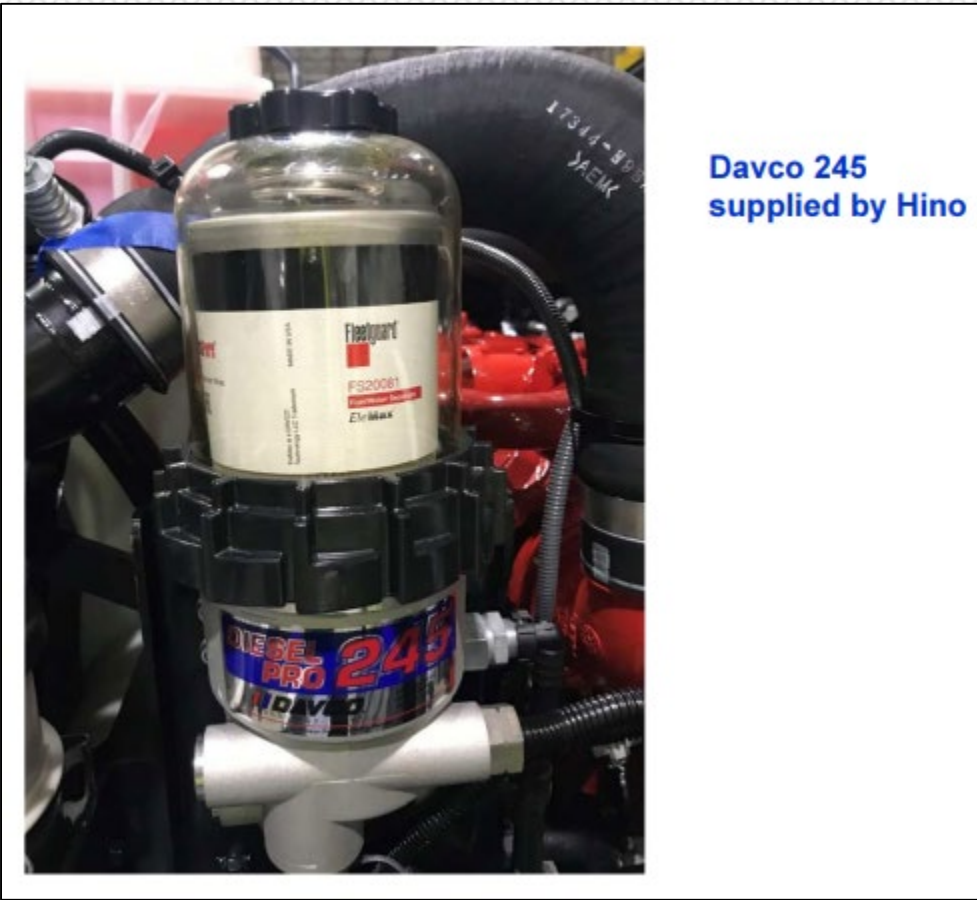


**Ambient Air Temp Sensor  
supplied by Hino**



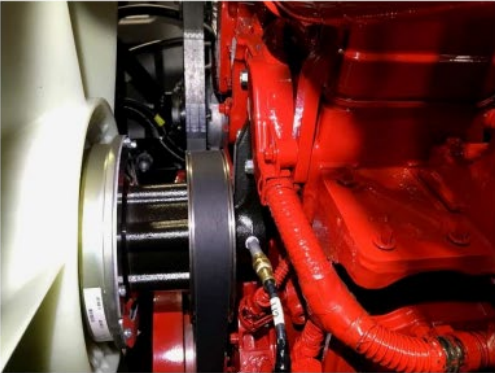
**Charge Air Cooler (CAC), Radiator and AC Condenser  
Lines and hoses for these components  
Supplied by Hino**





**Davco 245  
supplied by Hino**

**Pneumatic Clutch Fan  
supplied by Hino**



**Fan control solenoid  
supplied by Hino**



**TRUCKS**

A Toyota Group Company