

Technical product information

Topic	P245000 - EVAP System Switching Valve "A" Performance/Stuck Open DTC logged - V8 Kovomo
Market area	China 796 VW Import Comp. Ltd (Vico), Beijing (6796),United States E05 Bentley USA and rest America (6E05)
Brand	Bentley
Transaction No.	2063678/3
Level	EH
Status	Approval
Release date	

Event memory entries

Diagnostic address	Event memory entry	Fault type	Fault status
0001 - Engine electronics	P245000: EVAP System Switching Valve "A" Performance/Stuck Open		Intermittent
0001 - Engine electronics	P245000: EVAP System Switching Valve "A" Performance/Stuck Open		static

New customer code

Object of complaint	Complaint type	Position
vehicle service -> vehicle diagnosis -> guided fault finding	control units, services -> with event log entry	
electrical power, electric system, data transfer -> power supply	electrics	
engine -> operation, engine control -> engine control unit	control units, services -> error message	

Vehicle data

New Continental GT/GTC and New Flying Spur - V8 Kovomo

Sales types

Type	MY	Brand	Designation	Engine code	Gearbox code	Final drive code
3S32CB	2019	E		*	*	*
3S32CB	2020	E		*	*	*
3S32CB	2021	E		*	*	*
3S32CB	2022	E		*	*	*
3S42CB	2019	E		*	*	*
3S42CB	2020	E		*	*	*
3S42CB	2021	E		*	*	*
3S42CB	2022	E		*	*	*
ZG22CB	2020	E		*	*	*
ZG22CB	2021	E		*	*	*
ZG22CB	2022	E		*	*	*

Documents

Document name
master.xml

Customer statement / workshop findings

Customer Statement

Emission control system warning light illuminated within the DIP (Figure 1)



Figure 1

Workshop findings

DTC P245000 - EVAP System Switching Valve "A" Performance/Stuck Open - With symptom code 11952

Revision history

Additional request has been included within the Measure section (step 4) to inspect the leak detection pump (LDP) for impact damage when removed

Technical background

Refer to the Measure section of this TPI

Production change

Not applicable

Measure

Fuel System vapours are extremely flammable. Please refer to the Repair manual "Fuel system - Safety precautions" before commencing with any fuel system procedures

- 1) Referring to the applicable wiring diagram conduct a wiring integrity check of the Leak Detection Pump wiring circuit and connectors
- 2) Perform a smoke test of the leak detection system - Monitor for any leaks
- 3) If no faults were found - Refer to Rep.Gr 20 - Replace the leak detection pump (V144)
- 4) Inspect the LDP for impact damage when extracted, the operative must provide feedback and photographic evidence (see example shown in Figure 2) via a new or existing DISS query

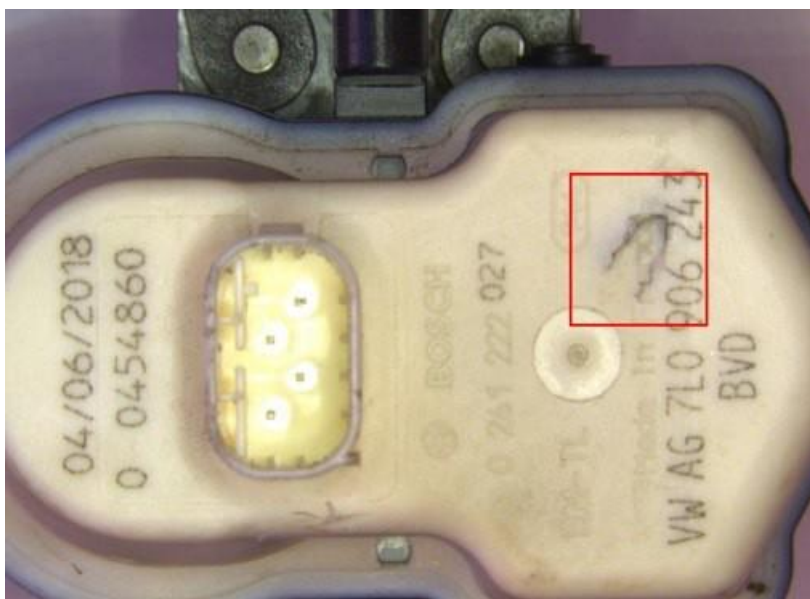


Figure 2

Warranty accounting instructions

WarrantyType	910 or 110
Damage service number	2048
Damage code	0017

Time to replace the leak detection pump

Labour Operation Code 20481900

Time 30 Time units

Wiring check

Labour Operation Code 97090199

Time 50 Time units

Smoke test

Labour Operation Code 20480100

Time 50 Time units

[Parts information](#)

Refer to the ETKA parts catalogue